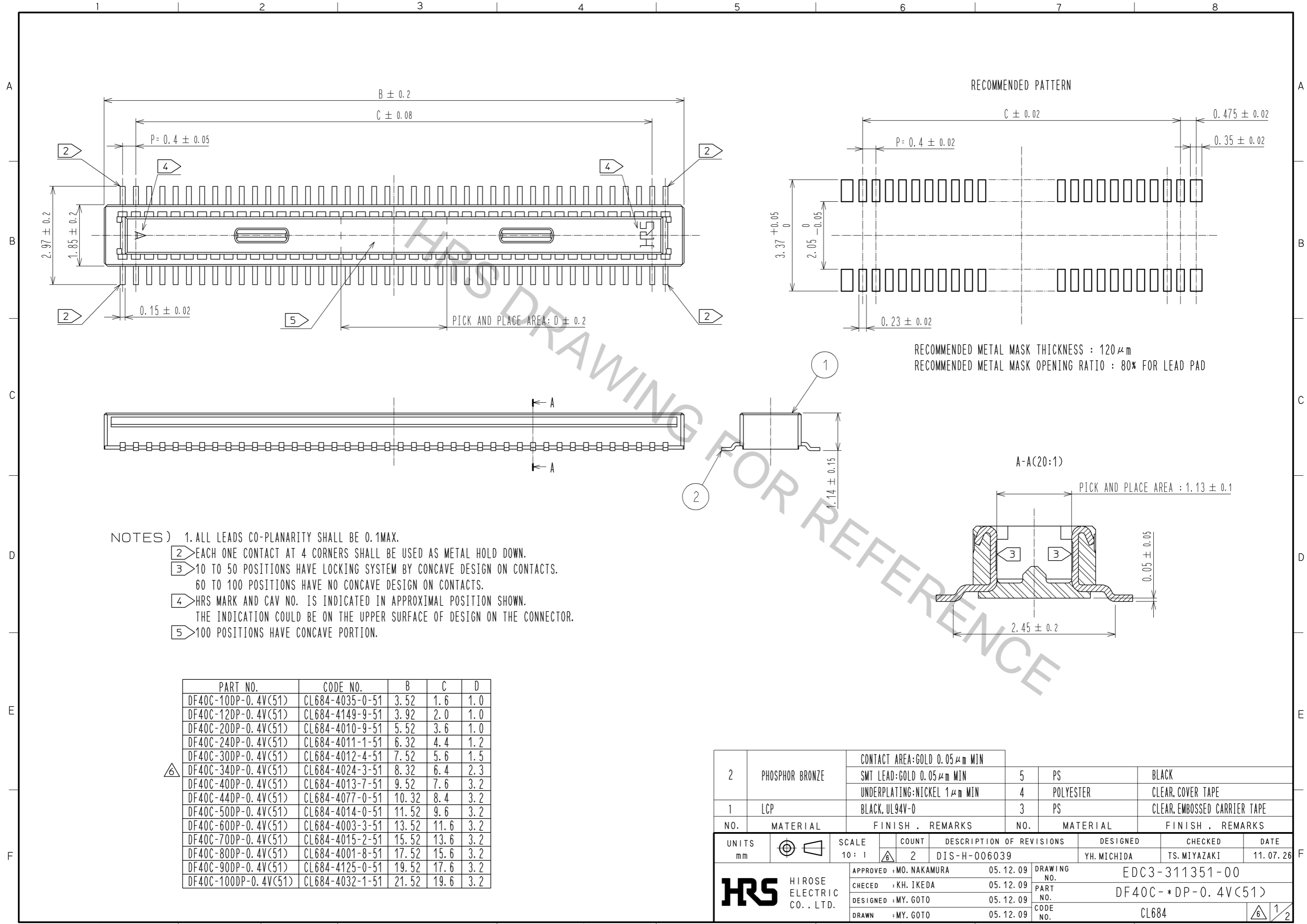


Oct.1.2018 Copyright 2018 HIROSE ELECTRIC CO., LTD. All Rights Reserved.  
 In case that the application demands a high level of reliability, such as automotive,  
 please contact a company representative for further information.



RECOMMENDED METAL MASK THICKNESS : 120 μm  
 RECOMMENDED METAL MASK OPENING RATIO : 80% FOR LEAD PAD

- NOTES)
1. ALL LEADS CO-PLANARITY SHALL BE 0.1MAX.
  2. EACH ONE CONTACT AT 4 CORNERS SHALL BE USED AS METAL HOLD DOWN.
  3. 10 TO 50 POSITIONS HAVE LOCKING SYSTEM BY CONCAVE DESIGN ON CONTACTS. 60 TO 100 POSITIONS HAVE NO CONCAVE DESIGN ON CONTACTS.
  4. HRS MARK AND CAV NO. IS INDICATED IN APPROXIMAL POSITION SHOWN. THE INDICATION COULD BE ON THE UPPER SURFACE OF DESIGN ON THE CONNECTOR.
  5. 100 POSITIONS HAVE CONCAVE PORTION.

PART NO.	CODE NO.	B	C	D
DF40C-10DP-0.4V(51)	CL684-4035-0-51	3.52	1.6	1.0
DF40C-12DP-0.4V(51)	CL684-4149-9-51	3.92	2.0	1.0
DF40C-20DP-0.4V(51)	CL684-4010-9-51	5.52	3.6	1.0
DF40C-24DP-0.4V(51)	CL684-4011-1-51	6.32	4.4	1.2
DF40C-30DP-0.4V(51)	CL684-4012-4-51	7.52	5.6	1.5
DF40C-34DP-0.4V(51)	CL684-4024-3-51	8.32	6.4	2.3
DF40C-40DP-0.4V(51)	CL684-4013-7-51	9.52	7.6	3.2
DF40C-44DP-0.4V(51)	CL684-4077-0-51	10.32	8.4	3.2
DF40C-50DP-0.4V(51)	CL684-4014-0-51	11.52	9.6	3.2
DF40C-60DP-0.4V(51)	CL684-4003-3-51	13.52	11.6	3.2
DF40C-70DP-0.4V(51)	CL684-4015-2-51	15.52	13.6	3.2
DF40C-80DP-0.4V(51)	CL684-4001-8-51	17.52	15.6	3.2
DF40C-90DP-0.4V(51)	CL684-4125-0-51	19.52	17.6	3.2
DF40C-100DP-0.4V(51)	CL684-4032-1-51	21.52	19.6	3.2

NO.	MATERIAL	FINISH	REMARKS	NO.	MATERIAL	FINISH	REMARKS
2	PHOSPHOR BRONZE	CONTACT AREA: GOLD 0.05 μm MIN		5	PS	BLACK	
		SMT LEAD: GOLD 0.05 μm MIN		4	POLYESTER	CLEAR COVER TAPE	
		UNDERPLATING: NICKEL 1 μm MIN		3	PS	CLEAR, EMBOSSED CARRIER TAPE	
1	LCP	BLACK, UL94V-0					

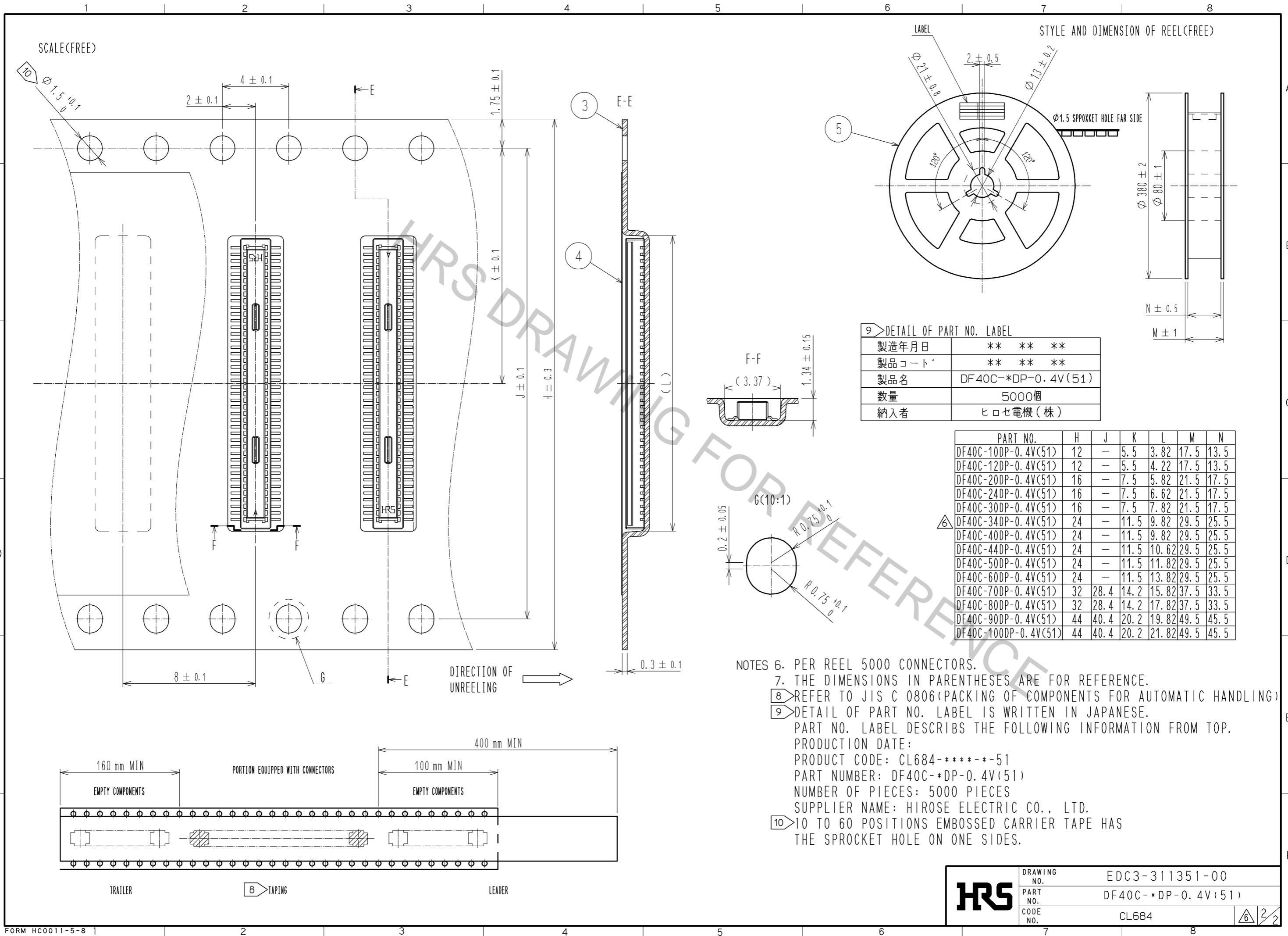
  

UNITS	SCALE	COUNT	DESCRIPTION OF REVISIONS	DESIGNED	CHECKED	DATE
mm	10:1	2	DIS-H-006039	YH.MICHIDA	TS.MIYAZAKI	11.07.26

APPROVED	DATE	DRAWING NO.
MO. NAKAMURA	05.12.09	EDC3-311351-00
CHECED	DATE	PART NO.
KH. IKEDA	05.12.09	DF40C-*DP-0.4V(51)
DESIGNED	DATE	CODE NO.
MY. GOTO	05.12.09	CL684
DRAWN	DATE	
MY. GOTO	05.12.09	

Oct.1.2018 Copyright 2018 HIROSE ELECTRIC CO., LTD. All Rights Reserved.  
 In case that the application demands a high level of reliability, such as automotive,  
 please contact a company representative for further information.



9 > DETAIL OF PART NO. LABEL

製造年月日	** ** *
製品コード	** ** *
製品名	DF40C-*DP-0.4V(51)
数量	5000個
納入者	ヒロセ電機(株)

PART NO.	H	J	K	L	M	N
DF40C-10DP-0.4V(51)	12	—	5.5	3.82	17.5	13.5
DF40C-12DP-0.4V(51)	12	—	5.5	4.22	17.5	13.5
DF40C-20DP-0.4V(51)	16	—	7.5	5.82	21.5	17.5
DF40C-24DP-0.4V(51)	16	—	7.5	6.62	21.5	17.5
DF40C-30DP-0.4V(51)	16	—	7.5	7.82	21.5	17.5
DF40C-34DP-0.4V(51)	24	—	11.5	9.82	29.5	25.5
DF40C-40DP-0.4V(51)	24	—	11.5	9.82	29.5	25.5
DF40C-44DP-0.4V(51)	24	—	11.5	10.62	29.5	25.5
DF40C-50DP-0.4V(51)	24	—	11.5	11.82	29.5	25.5
DF40C-60DP-0.4V(51)	24	—	11.5	13.82	29.5	25.5
DF40C-70DP-0.4V(51)	32	28.4	14.2	15.82	37.5	33.5
DF40C-80DP-0.4V(51)	32	28.4	14.2	17.82	37.5	33.5
DF40C-90DP-0.4V(51)	44	40.4	20.2	19.82	49.5	45.5
DF40C-100DP-0.4V(51)	44	40.4	20.2	21.82	49.5	45.5

NOTES  
 6. PER REEL 5000 CONNECTORS.  
 7. THE DIMENSIONS IN PARENTHESES ARE FOR REFERENCE.  
 8 REFER TO JIS C 0806(PACKING OF COMPONENTS FOR AUTOMATIC HANDLING)  
 9> DETAIL OF PART NO. LABEL IS WRITTEN IN JAPANESE.  
 PART NO. LABEL DESCRIBES THE FOLLOWING INFORMATION FROM TOP.  
 PRODUCTION DATE:  
 PRODUCT CODE: CL684-\*\*\*\*\*-51  
 PART NUMBER: DF40C-\*DP-0.4V(51)  
 NUMBER OF PIECES: 5000 PIECES  
 SUPPLIER NAME: HIROSE ELECTRIC CO., LTD.  
 10 TO 60 POSITIONS EMBOSSED CARRIER TAPE HAS THE SPROCKET HOLE ON ONE SIDES.

<b>HRS</b>	DRAWING NO.	EDC3-311351-00
	PART NO.	DF40C-*DP-0.4V(51)
	CODE NO.	CL684