

- NOTES) 1. ALL LEADS CO-PLANARITY SHALL BE 0.1MAX.
 2 EACH ONE CONTACT AT 4 CORNERS SHALL BE USED AS METAL HOLD DOWN.
 3 10 TO 50 POSITIONS HAVE LOCKING SYSTEM BY CONCAVE DESIGN ON CONTACTS.
 60 TO 100 POSITIONS HAVE NO CONCAVE DESIGN ON CONTACTS.
 4 HRS MARK AND CAV NO. IS INDICATED IN APPROXIMAL POSITION SHOWN.
 THE INDICATION COULD BE ON THE UPPER SURFACE OF DESIGN ON THE CONNECTOR.
 5 100 POSITIONS HAVE CONCAVE PORTION.

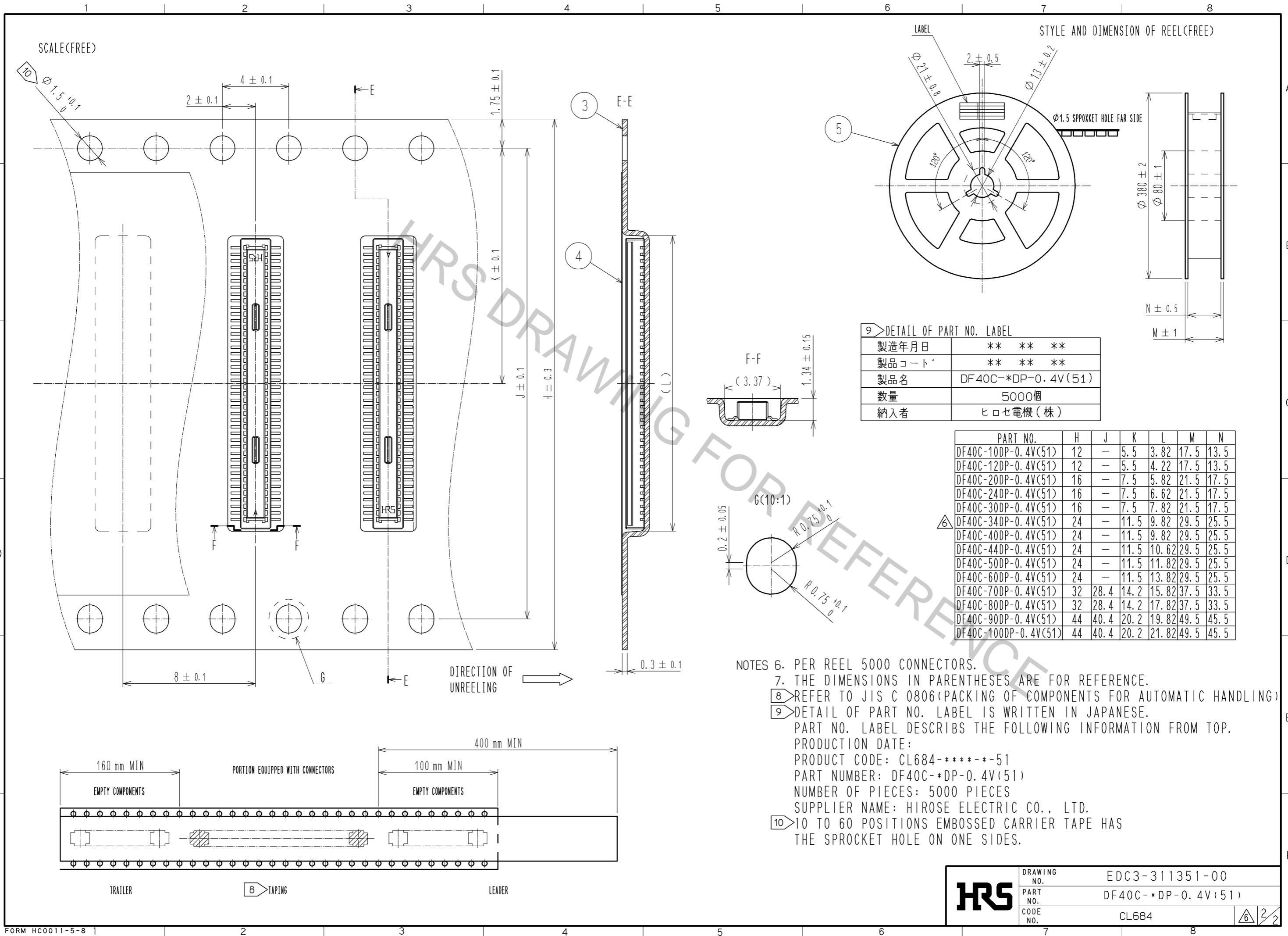
PART NO.	CODE NO.	B	C	D
DF40C-10DP-0.4V(51)	CL684-4035-0-51	3.52	1.6	1.0
DF40C-12DP-0.4V(51)	CL684-4149-9-51	3.92	2.0	1.0
DF40C-20DP-0.4V(51)	CL684-4010-9-51	5.52	3.6	1.0
DF40C-24DP-0.4V(51)	CL684-4011-1-51	6.32	4.4	1.2
DF40C-30DP-0.4V(51)	CL684-4012-4-51	7.52	5.6	1.5
DF40C-34DP-0.4V(51)	CL684-4024-3-51	8.32	6.4	2.3
DF40C-40DP-0.4V(51)	CL684-4013-7-51	9.52	7.6	3.2
DF40C-44DP-0.4V(51)	CL684-4077-0-51	10.32	8.4	3.2
DF40C-50DP-0.4V(51)	CL684-4014-0-51	11.52	9.6	3.2
DF40C-60DP-0.4V(51)	CL684-4003-3-51	13.52	11.6	3.2
DF40C-70DP-0.4V(51)	CL684-4015-2-51	15.52	13.6	3.2
DF40C-80DP-0.4V(51)	CL684-4001-8-51	17.52	15.6	3.2
DF40C-90DP-0.4V(51)	CL684-4125-0-51	19.52	17.6	3.2
DF40C-100DP-0.4V(51)	CL684-4032-1-51	21.52	19.6	3.2

NO.	MATERIAL	FINISH	REMARKS	NO.	MATERIAL	FINISH	REMARKS
2	PHOSPHOR BRONZE	CONTACT AREA:GOLD 0.05μm MIN		5	PS	BLACK	
		SMT LEAD:GOLD 0.05μm MIN		4	POLYESTER	CLEAR COVER TAPE	
		UNDERPLATING:NICKEL 1μm MIN		3	PS	CLEAR, EMBOSSED CARRIER TAPE	
1	LCP	BLACK, UL94V-0					

UNITS	SCALE	COUNT	DESCRIPTION OF REVISIONS	DESIGNED	CHECKED	DATE
mm	10:1	2	DIS-H-006039	YH.MICHIDA	TS.MIYAZAKI	11.07.26

APPROVED	DATE	DRAWING NO.
MO. NAKAMURA	05.12.09	EDC3-311351-00
KH. IKEDA	05.12.09	PART NO.
MY. GOTO	05.12.09	DF40C-*DP-0.4V(51)
MY. GOTO	05.12.09	CODE NO.
		CL684

Oct.1.2018 Copyright 2018 HIROSE ELECTRIC CO., LTD. All Rights Reserved.
 In case that the application demands a high level of reliability, such as automotive,
 please contact a company representative for further information.



9 > DETAIL OF PART NO. LABEL

製造年月日	** ** *
製品コード	** ** *
製品名	DF40C-*DP-0.4V(51)
数量	5000個
納入者	ヒロセ電機(株)

PART NO.	H	J	K	L	M	N
DF40C-10DP-0.4V(51)	12	—	5.5	3.82	17.5	13.5
DF40C-12DP-0.4V(51)	12	—	5.5	4.22	17.5	13.5
DF40C-20DP-0.4V(51)	16	—	7.5	5.82	21.5	17.5
DF40C-24DP-0.4V(51)	16	—	7.5	6.62	21.5	17.5
DF40C-30DP-0.4V(51)	16	—	7.5	7.82	21.5	17.5
DF40C-34DP-0.4V(51)	24	—	11.5	9.82	29.5	25.5
DF40C-40DP-0.4V(51)	24	—	11.5	9.82	29.5	25.5
DF40C-44DP-0.4V(51)	24	—	11.5	10.62	29.5	25.5
DF40C-50DP-0.4V(51)	24	—	11.5	11.82	29.5	25.5
DF40C-60DP-0.4V(51)	24	—	11.5	13.82	29.5	25.5
DF40C-70DP-0.4V(51)	32	28.4	14.2	15.82	37.5	33.5
DF40C-80DP-0.4V(51)	32	28.4	14.2	17.82	37.5	33.5
DF40C-90DP-0.4V(51)	44	40.4	20.2	19.82	49.5	45.5
DF40C-100DP-0.4V(51)	44	40.4	20.2	21.82	49.5	45.5

NOTES
 6. PER REEL 5000 CONNECTORS.
 7. THE DIMENSIONS IN PARENTHESES ARE FOR REFERENCE.
 8 REFER TO JIS C 0806(PACKING OF COMPONENTS FOR AUTOMATIC HANDLING)
 9 DETAIL OF PART NO. LABEL IS WRITTEN IN JAPANESE.
 PART NO. LABEL DESCRIBES THE FOLLOWING INFORMATION FROM TOP.
 PRODUCTION DATE:
 PRODUCT CODE: CL684-*****-51
 PART NUMBER: DF40C-*DP-0.4V(51)
 NUMBER OF PIECES: 5000 PIECES
 SUPPLIER NAME: HIROSE ELECTRIC CO., LTD.
 10 TO 60 POSITIONS EMBOSSED CARRIER TAPE HAS THE SPROCKET HOLE ON ONE SIDES.

HRS	DRAWING NO.	EDC3-311351-00
	PART NO.	DF40C-*DP-0.4V(51)
	CODE NO.	CL684