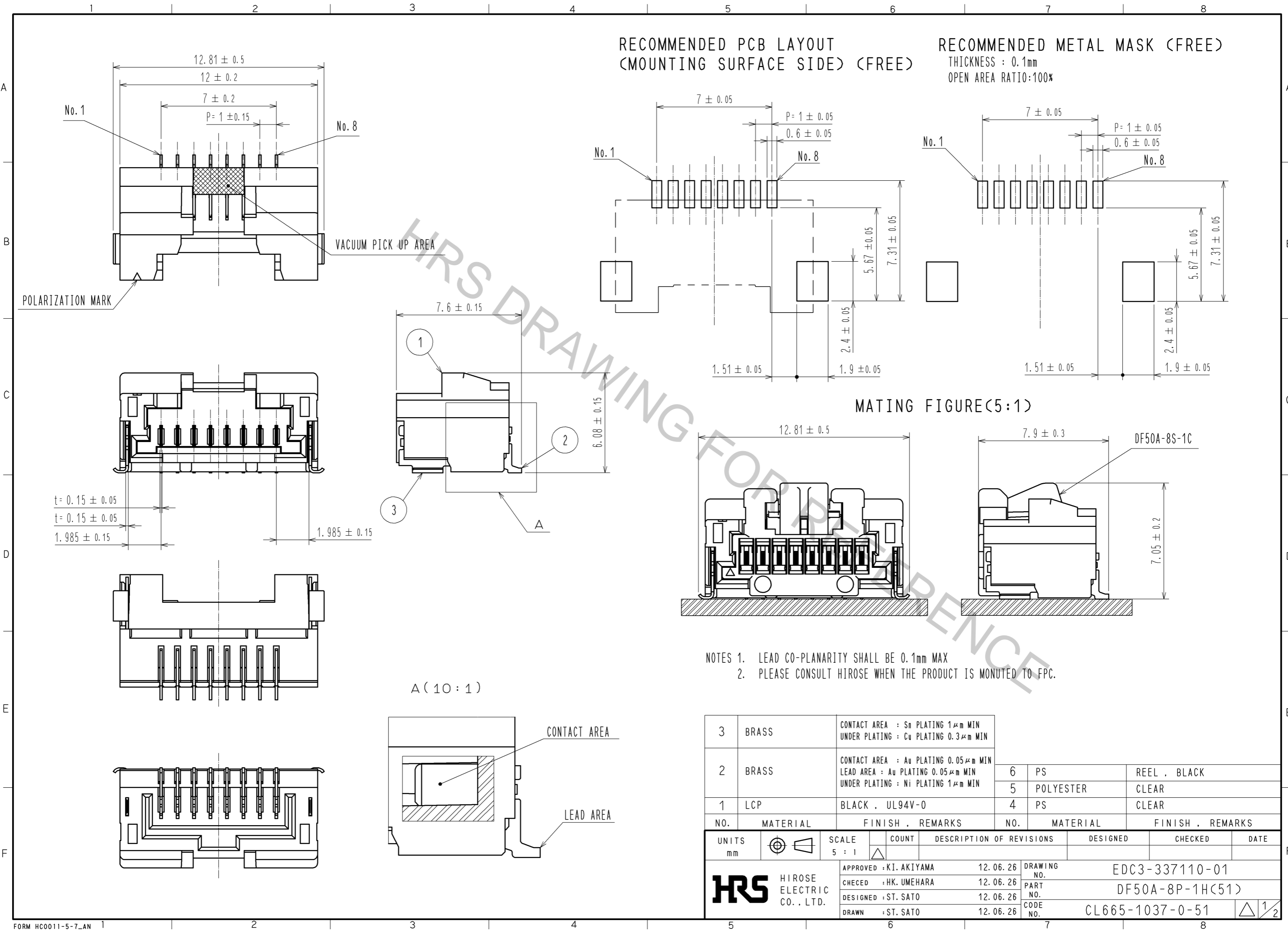


Oct.1.2018 Copyright 2018 HIROSE ELECTRIC CO., LTD. All Rights Reserved.
 In case that the application demands a high level of reliability, such as automotive,
 please contact a company representative for further information.



RECOMMENDED PCB LAYOUT
(MOUNTING SURFACE SIDE) (FREE)

RECOMMENDED METAL MASK (FREE)
 THICKNESS : 0.1mm
 OPEN AREA RATIO:100%

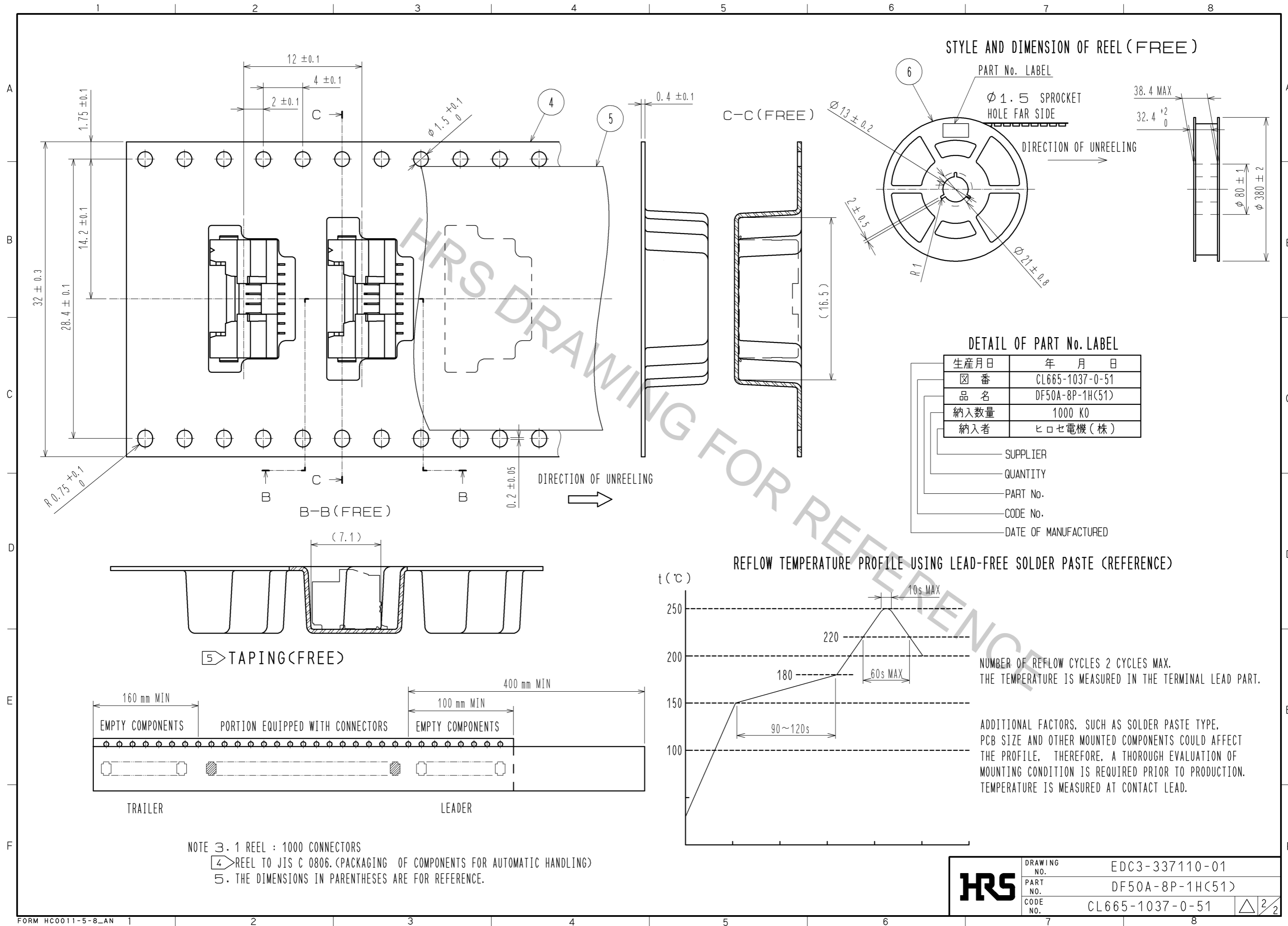
MATING FIGURE(5:1)

- NOTES 1. LEAD CO-PLANARITY SHALL BE 0.1mm MAX
 2. PLEASE CONSULT HIROSE WHEN THE PRODUCT IS MONUTED TO FPC.

3	BRASS	CONTACT AREA : Sn PLATING 1μm MIN UNDER PLATING : Cu PLATING 0.3μm MIN	6	PS	REEL , BLACK
2	BRASS	CONTACT AREA : Au PLATING 0.05μm MIN LEAD AREA : Au PLATING 0.05μm MIN UNDER PLATING : Ni PLATING 1μm MIN	5	POLYESTER	CLEAR
1	LCP	BLACK , UL94V-0	4	PS	CLEAR
NO.	MATERIAL	FINISH , REMARKS	NO.	MATERIAL	FINISH , REMARKS

UNITS mm		SCALE 5 : 1	COUNT △	DESCRIPTION OF REVISIONS	DESIGNED	CHECKED	DATE
HRS HIROSE ELECTRIC CO., LTD.		APPROVED : KI. AKIYAMA	12.06.26	DRAWING NO.	EDC3-337110-01		
		CHECED : HK. UMEHARA	12.06.26	PART NO.	DF50A-8P-1H(51)		
		DESIGNED : ST. SATO	12.06.26	CODE NO.	CL665-1037-0-51		
		DRAWN : ST. SATO	12.06.26		△ 1/2		

Oct.1.2018 Copyright 2018 HIROSE ELECTRIC CO., LTD. All Rights Reserved.
 In case that the application demands a high level of reliability, such as automotive,
 please contact a company representative for further information.



STYLE AND DIMENSION OF REEL (FREE)

PART No. LABEL

Φ1.5 SPROCKET HOLE FAR SIDE

DIRECTION OF UNREELING

38.4 MAX

32.4 ⁺²/₀

Φ80 ± 1

Φ380 ± 2

2 ± 0.2

R1

Φ21 ± 0.8

Φ13 ± 0.2

C-C (FREE)

(16.5)

0.2 ± 0.05

DIRECTION OF UNREELING

DETAIL OF PART No. LABEL

生産月日 年 月 日

図番 CL665-1037-0-51

品名 DF50A-8P-1H(51)

納入数量 1000 KO

納入者 ヒロセ電機(株)

SUPPLIER

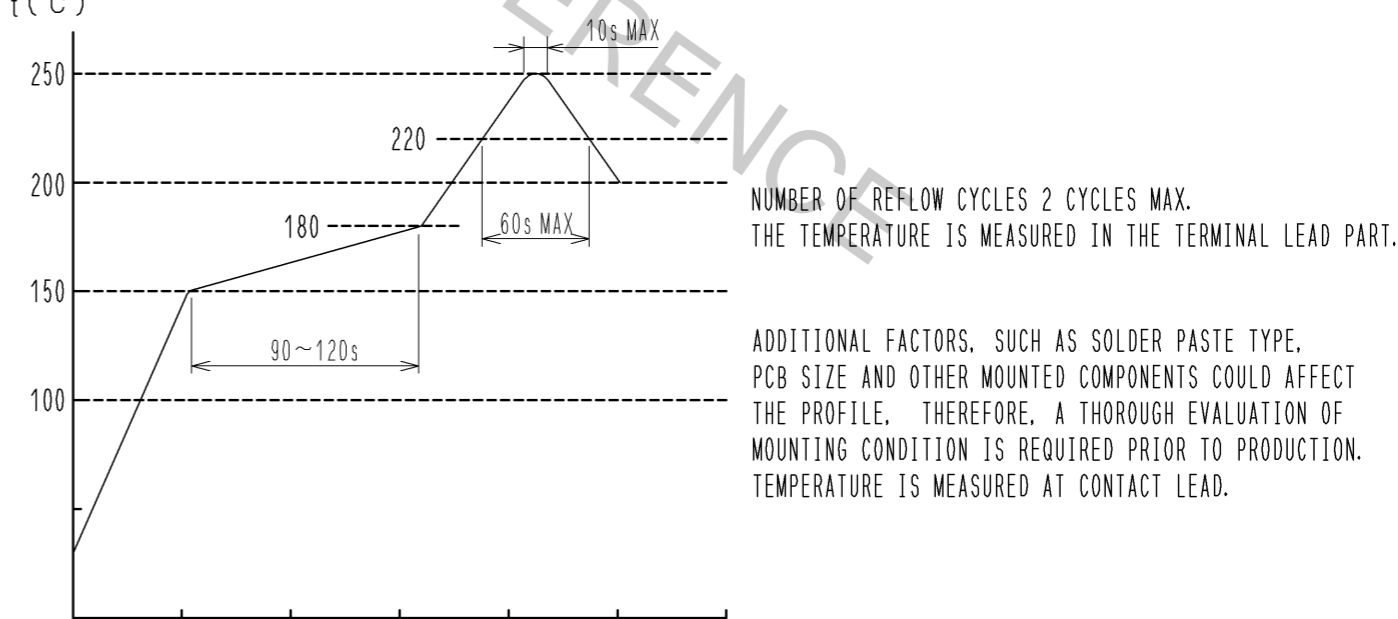
QUANTITY

PART No.

CODE No.

DATE OF MANUFACTURED

REFLOW TEMPERATURE PROFILE USING LEAD-FREE SOLDER PASTE (REFERENCE)



NUMBER OF REFLOW CYCLES 2 CYCLES MAX.
 THE TEMPERATURE IS MEASURED IN THE TERMINAL LEAD PART.

ADDITIONAL FACTORS, SUCH AS SOLDER PASTE TYPE,
 PCB SIZE AND OTHER MOUNTED COMPONENTS COULD AFFECT
 THE PROFILE. THEREFORE, A THOROUGH EVALUATION OF
 MOUNTING CONDITION IS REQUIRED PRIOR TO PRODUCTION.
 TEMPERATURE IS MEASURED AT CONTACT LEAD.

NOTE 3. 1 REEL : 1000 CONNECTORS
 4 REEL TO JIS C 0806. (PACKAGING OF COMPONENTS FOR AUTOMATIC HANDLING)
 5. THE DIMENSIONS IN PARENTHESES ARE FOR REFERENCE.

HRS	DRAWING NO.	EDC3-337110-01
	PART NO.	DF50A-8P-1H(51)
	CODE NO.	CL665-1037-0-51
		△ 2/2