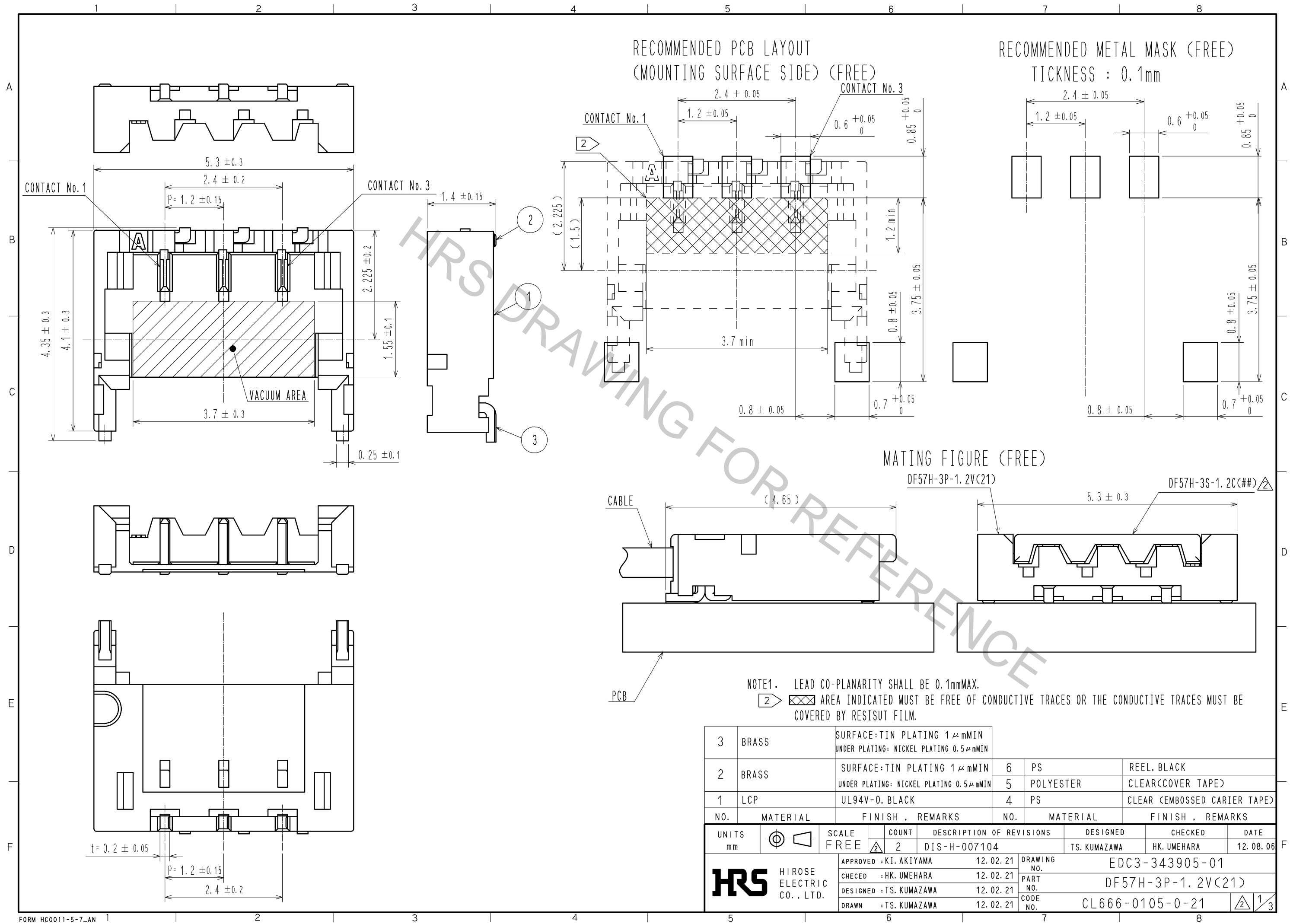
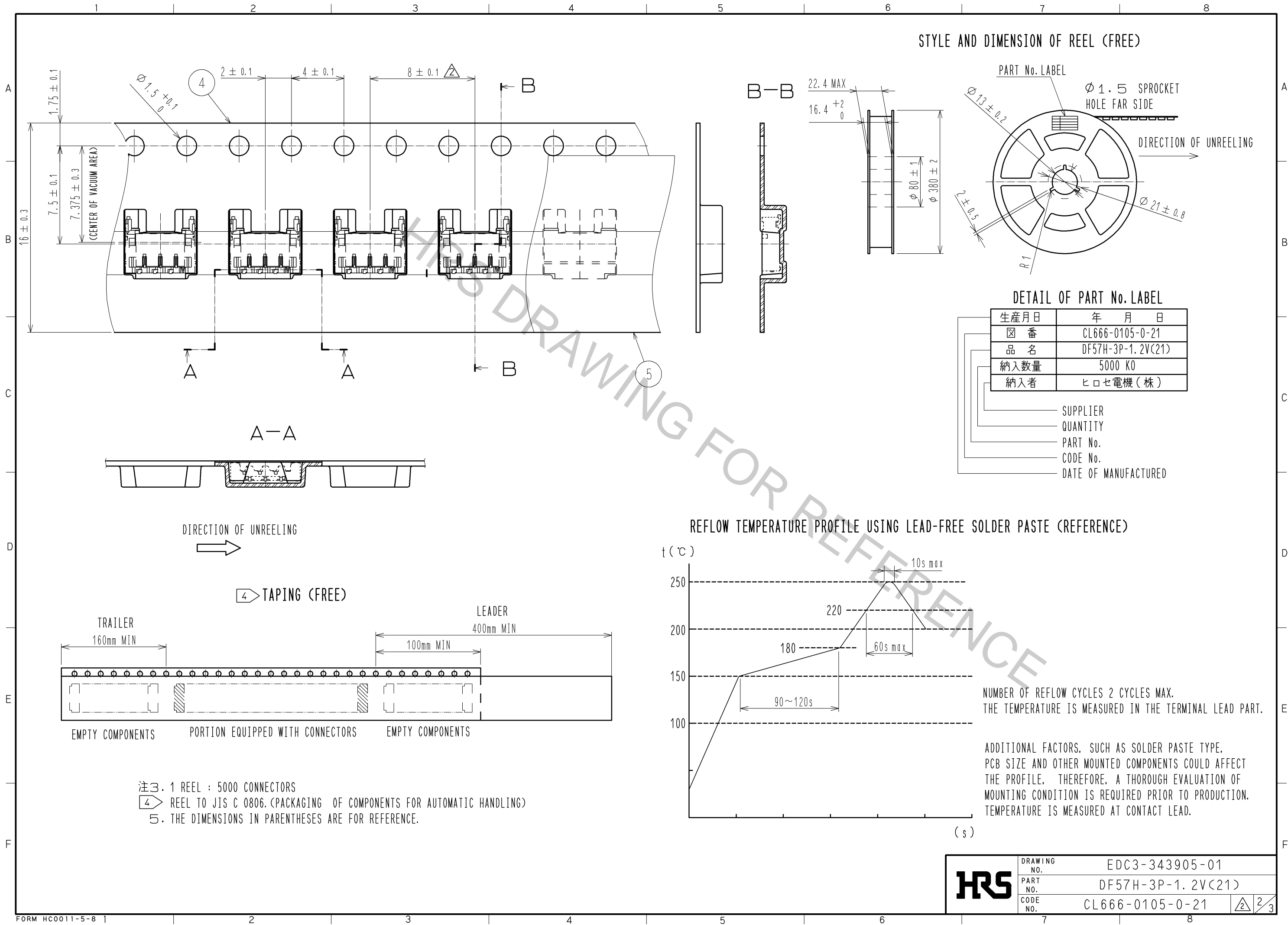


Oct.1.2018 Copyright 2018 HIROSE ELECTRIC CO., LTD. All Rights Reserved.
In case that the application demands a high level of reliability, such as automotive,
please contact a company representative for further information.



3	BRASS	SURFACE:TIN PLATING 1μmMIN UNDER PLATING: NICKEL PLATING 0.5μmMIN	6	PS	REEL, BLACK
2	BRASS	SURFACE:TIN PLATING 1μmMIN UNDER PLATING: NICKEL PLATING 0.5μmMIN	5	POLYESTER	CLEAR(COVER TAPE)
1	LCP	UL94V-0, BLACK	4	PS	CLEAR (EMBOSSED CARRIER TAPE)
NO.	MATERIAL	FINISH , REMARKS	NO.	MATERIAL	FINISH , REMARKS
UNITS mm		SCALE FREE	COUNT 2	DESCRIPTION OF REVISIONS DIS-H-007104	DESIGNED TS. KUMAZAWA
HIROSE ELECTRIC CO., LTD.		APPROVED : KI. AKIYAMA	12.02.21	DRAWING NO.	EDC3-343905-01
		CHECED : HK. UMEHARA	12.02.21	PART NO.	DF57H-3P-1.2V(21)
		DESIGNED : TS. KUMAZAWA	12.02.21	CODE NO.	CL666-0105-0-21
		DRAWN : TS. KUMAZAWA	12.02.21		
					DATE 12.08.06

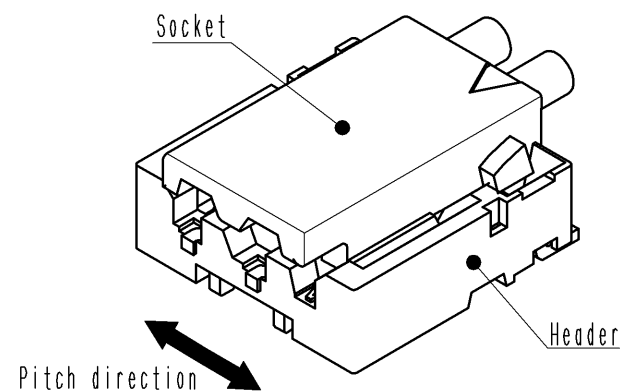
Oct.1.2018 Copyright 2018 HIROSE ELECTRIC CO., LTD. All Rights Reserved.
In case that the application demands a high level of reliability, such as automotive,
please contact a company representative for further information.



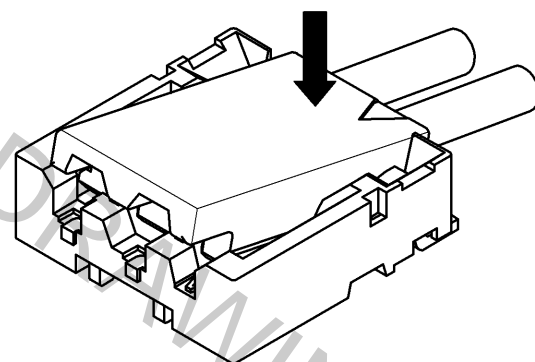
DF57 Series Mating / Unmating Operation Instruction (For DF57 series)

Mating

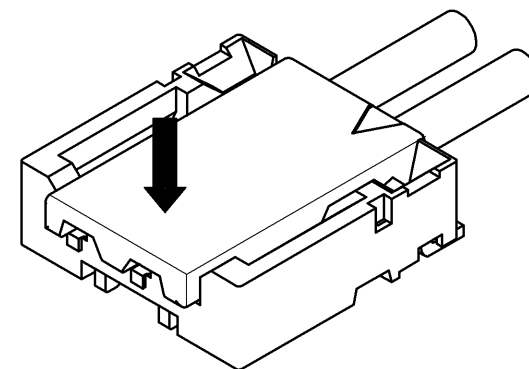
①By positioning the convexity of the socket sides to the header concavity, align the centers of the socket and the header in pitch direction.



②Slightly press the socket down at cable side to tilted angle.

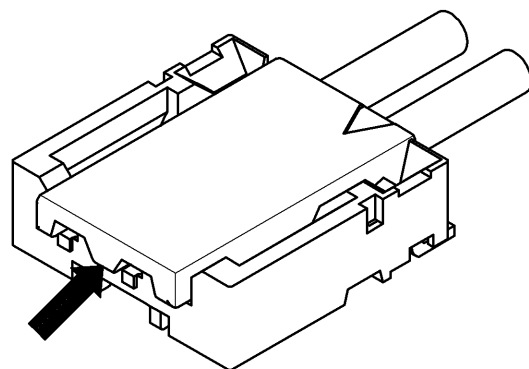


③Press down at the lever side with stabilizing the cable side to insert. Mating completes.

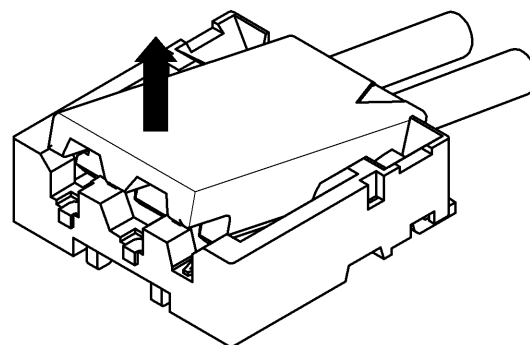


Unmating

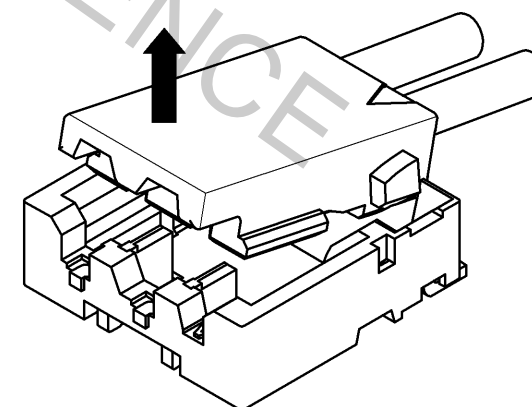
①Hook the lever with finger nail.



②Lift up to the upper direction and friction lock is released.



③Lift up to the upper direction and positive lock is released. Removal completes.



HRS

DRAWING NO.	EDC3-343905-01
PART NO.	DF57H-3P-1.2V(21)
CODE NO.	CL666-0105-0-21

3/3