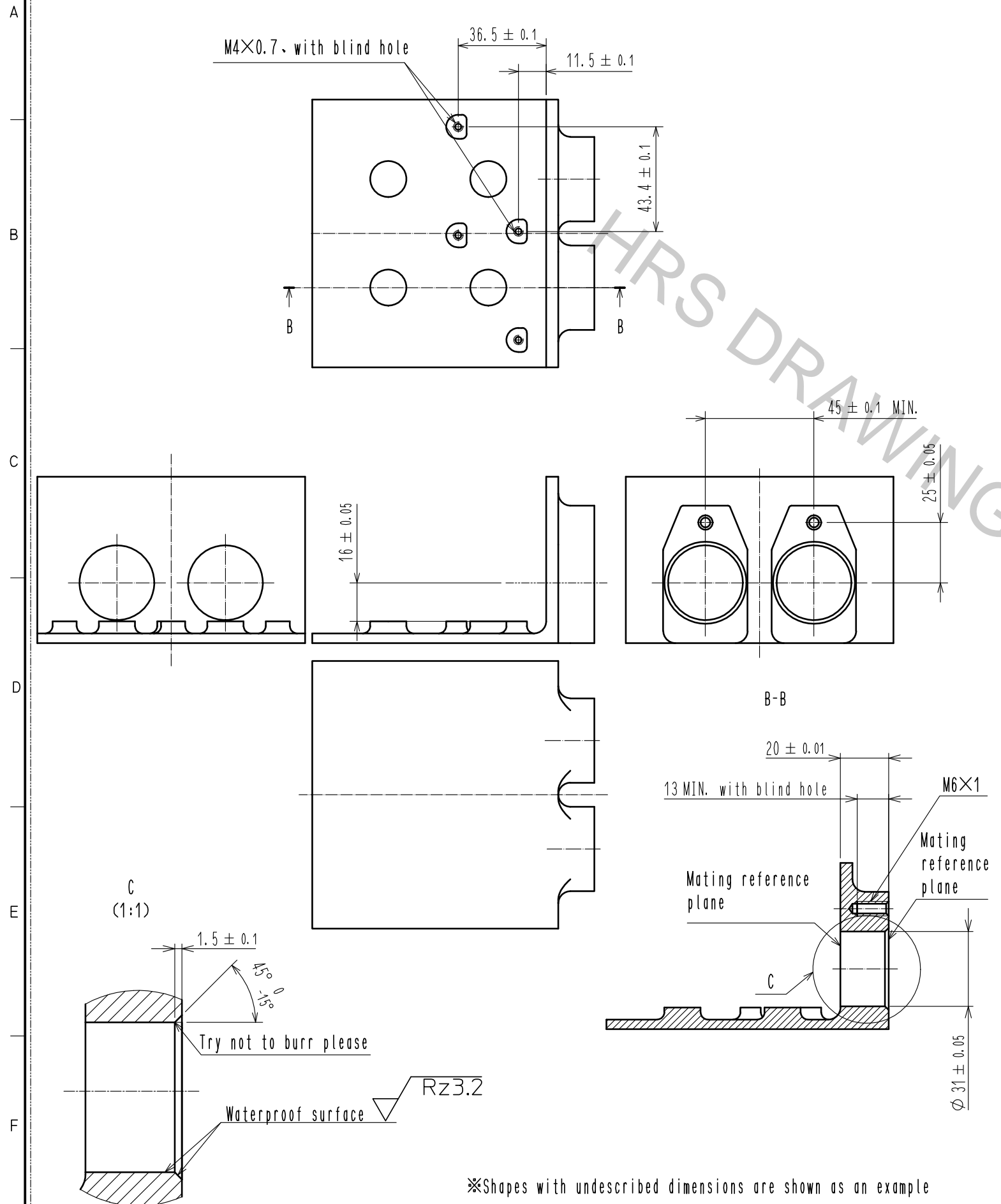


- Notes
- 1 The recommended tightening torque of the M4 Pan head screws is 1.5 to 1.6 N·m.
 - 2 Applicable Hex bolt specifications:
 Material: Steel
 Plating: Nickel plating
 Nominal length: Thickness of the busbar + (10 to 15)mm
 The recommended tightening torque: 6.0 to 6.5 N·m
 - 3 To prevent the M4 Pan head screw and M8 Hex bolt from loosening, it is recommended that Henkel Japan's loctite 243, or equivalent, be applied to this product.
 - 4 Recommended busbar plating: Tin plating
 (If a tin plating is not used, be careful of galvanic corrosion)
 - 5 **WARNING** This connector is not hot pluggable.
 - 6 This product shall be mated/unmated with the Hex bolt fixed as shown in Connector Installation Figure. If there are no bolts, part ④ will come off.

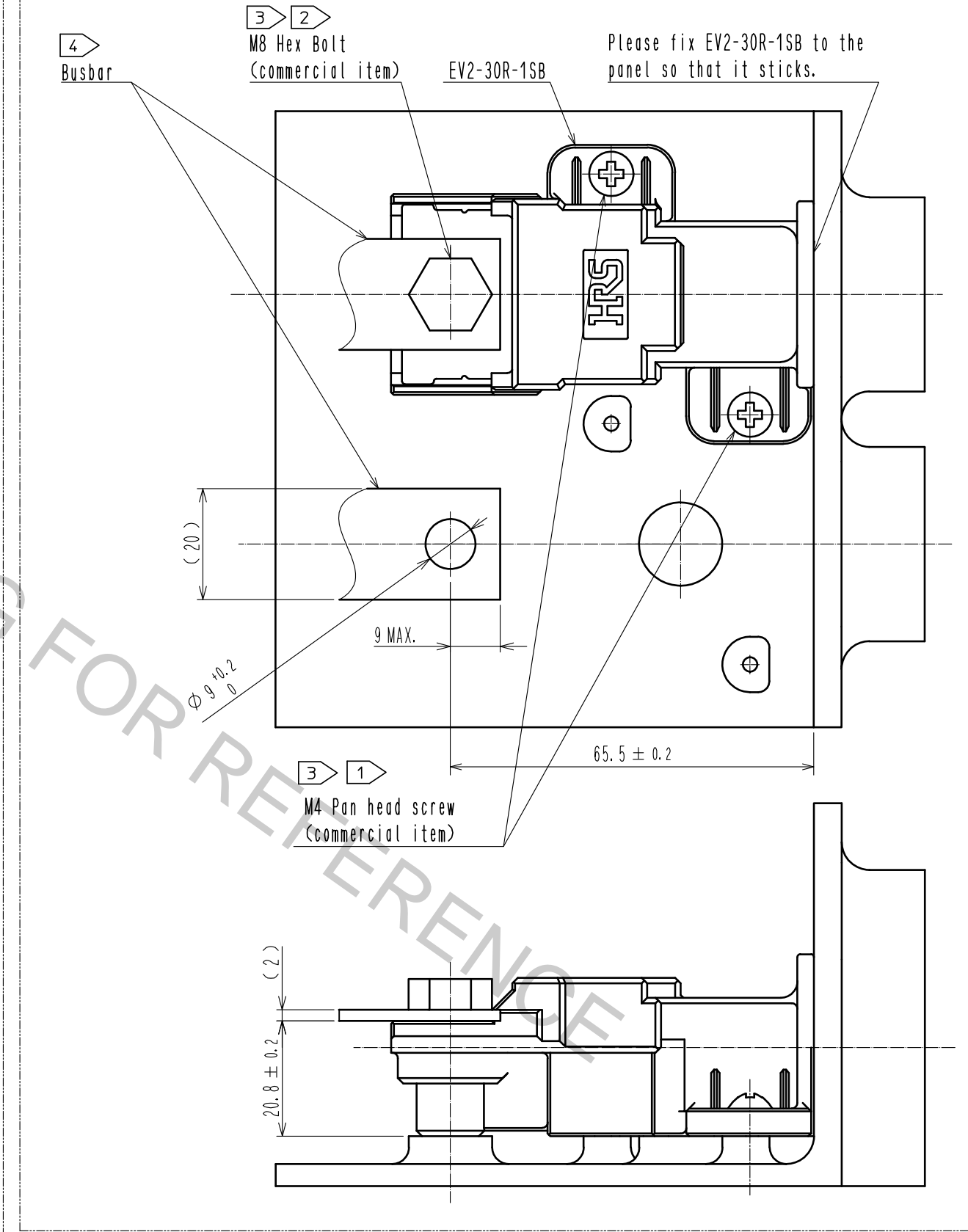
2	Steel	Nickel plating	4	Copper alloy	Tin plating 1μm min.		
1	Polyphenylene sulfide	UL94V-0 (Black)	3	Stainless steel			
NO.	MATERIAL	FINISH . REMARKS	NO.	MATERIAL	FINISH . REMARKS		
UNITS mm		SCALE 1 : 1	COUNT 2	DESCRIPTION OF REVISIONS DIS-C-00002349	DESIGNED TP. KOMATSU	CHECKED YH. YAMADA	DATE 18.06.07
HRS HIROSE ELECTRIC CO., LTD.		APPROVED : SU. OBARA	15.11.13	DRAWING NO. EDC-118968-00-00			
		CHECKED : YH. YAMADA	15.11.13	PART NO. EV2-30R-1SB			
		DESIGNED : HS. KAWASHIMA	15.11.13	CODE NO. CL139-0200-7-00			
		DRAWN : HS. KAWASHIMA	15.11.13	1/2			

Oct.1.2018 Copyright 2018 HIROSE ELECTRIC CO., LTD. All Rights Reserved.
 In case that the application demands a high level of reliability, such as automotive,
 please contact a company representative for further information.

Installed Panel Dimensions(1:2)



△ Connector Installation Figure



HRS	DRAWING NO.	EDC-118968-00-00	△ 2/2
	PART NO.	EV2-30R-1SB	
	CODE NO.	CL139-0200-7-00	