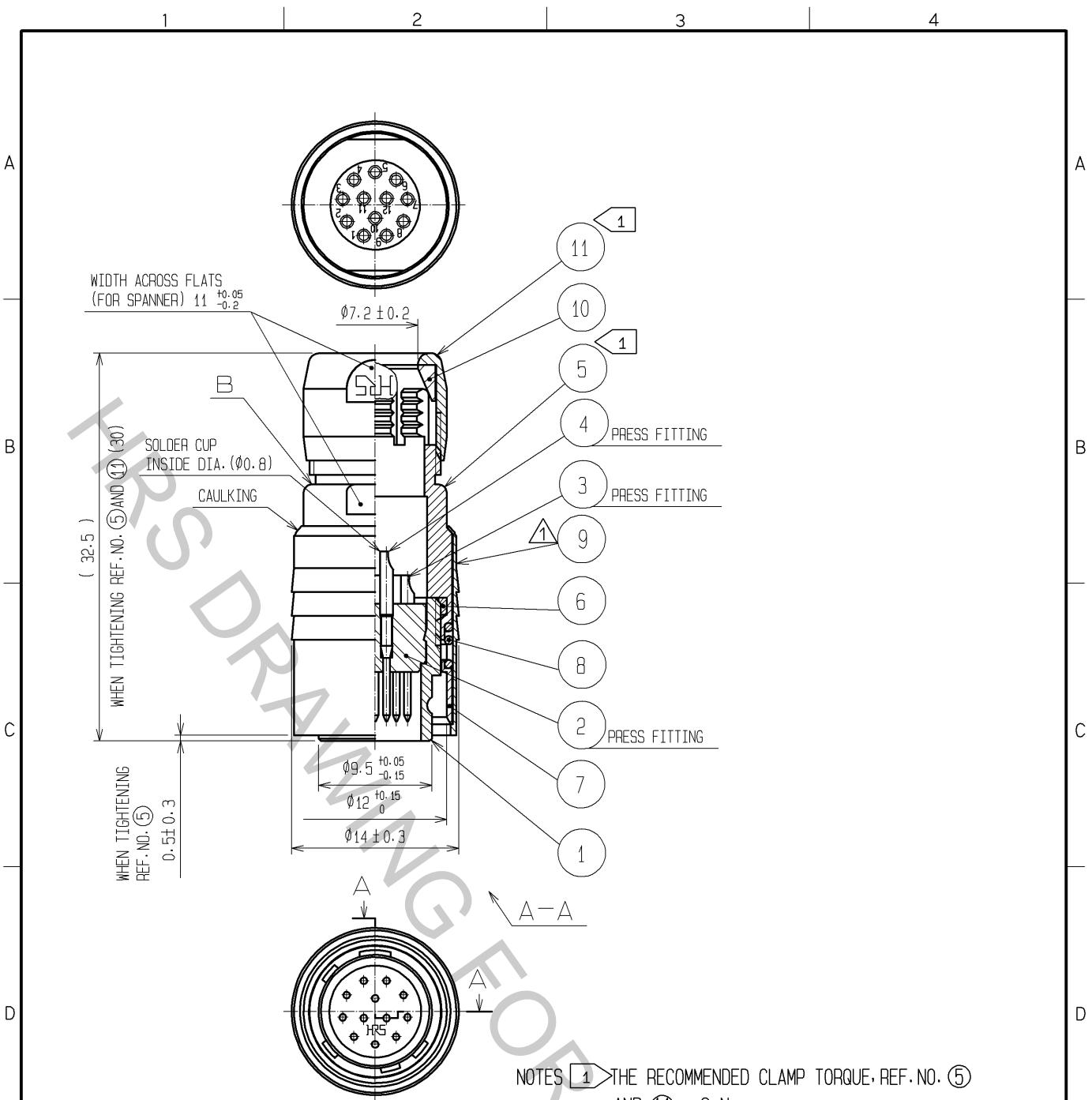


Oct.1.2018 Copyright 2018 HIROSE ELECTRIC CO., LTD. All Rights Reserved.
 In case that the application demands a high level of reliability, such as automotive,
 please contact a company representative for further information.



NOTES ① THE RECOMMENDED CLAMP TORQUE, REF. NO. ⑤ AND ⑪ : 2 N·m.
 REF. NO. ⑪ SHALL BE TIGHTENED BY TORQUE AFTER CLAMPED UNTIL IT TOUCHES THE SURFACE B.
 2 ONE EXAMPLE OF THE ROTATION OF REF. NO. ①, ⑤ AND ⑪ ARE SHOWN.

6	POLYAMIDE				
5	BRASS	MATTE FINISH NICKEL PLATED	11	BRASS	MATTE FINISH NICKEL PLATED
4	BRASS	GOLD PLATING 0.2μm min.	10	POLYAMIDE	
3	BRASS	NICKEL UNDER PLATING 2μm min.	9	BRASS	MATTE FINISH NICKEL PLATED
2	POLYAMIDE	(BLUE)	8	STEEL	NICKEL PLATING
1	ZINC ALLOY	MATTE FINISH NICKEL PLATED	7	STAINLESS STEEL	
NO.	MATERIAL	FINISH , REMARKS	NO.	MATERIAL	FINISH , REMARKS

UNITS mm		SCALE 2 : 1	COUNT 1	DESCRIPTION OF REVISIONS DIS-C-002608	DESIGNED TP. KOMATSU	CHECKED EJ. KUNII	DATE 12. 05. 29
-------------	--	----------------	------------	--	-------------------------	----------------------	--------------------

HRS HIROSE ELECTRIC CO., LTD.	APPROVED : MO. SATOH	05. 10. 24	DRAWING NO.	EDC4-007760-73
	CHECKED : EJ. KUNII	05. 10. 21	PART NO.	HR10-10P-12P(73)
	DESIGNED : DS. MATSUNE	05. 10. 19	CODE NO.	CL110-0025-7-73
	DRAWN : DS. MATSUNE	05. 10. 19		1/1