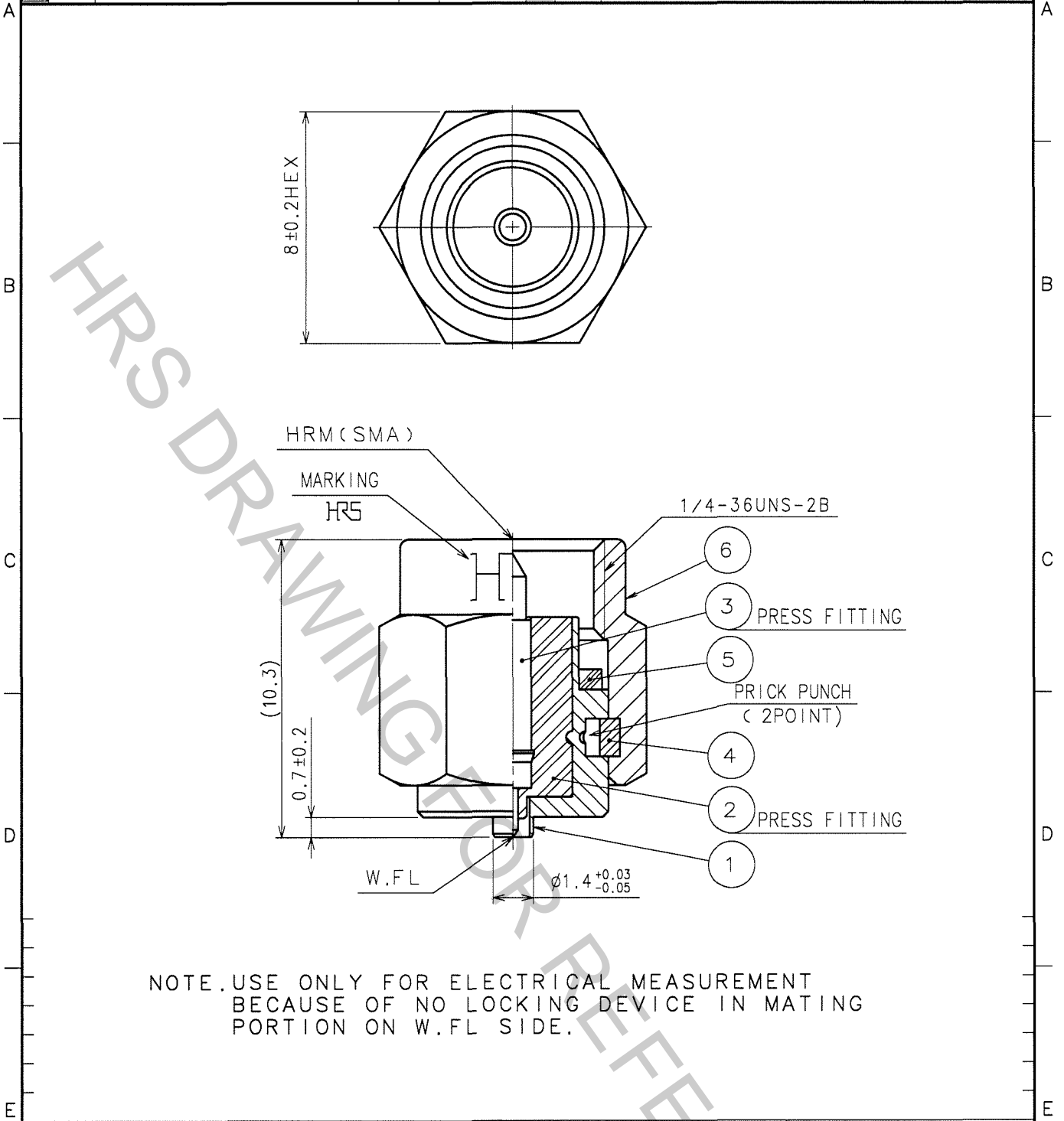


Oct.1.2018 Copyright 2018 HIROSE ELECTRIC CO., LTD. All Rights Reserved.
In case that the application demands a high level of reliability, such as automotive,
please contact a company representative for further information.

1					2					3					4				
COUNT	DESCRIPTION OF REVISIONS				BY	CHKD	DATE			COUNT	DESCRIPTION OF REVISIONS				BY	CHKD	DATE		
△										△									
△										△									
△										△									



3	PHOSPHOR BRONZE	GOLD PLATING	6	STAINLESS STEEL	PASSIVATE
2	PTFE		5	SILICONE RUBBER	(RED)
1	STAINLESS STEEL	NICKEL PLATING	4	BERYLLIUM COPPER	NICKEL PLATING
NO.	MATERIAL	FINISH, REMARKS	NO.	MATERIAL	FINISH, REMARKS

CODE NO. (OLD) CL		DRAWN h. Ninomiga 06.03.24	DESIGNED h. Ninomiga 06.03.24	CHECKED m. yamane 06.03.24	APPROVED J. Mitani 06.03.24	RELEASED
RoHS COMPLIANT						
DRAWING NO. EDC4-300217-40		PART NO. HRMP-W.FLJ(40)				
SACLE 5 : 1		CODE NO. CL311-0367-3-40				
UNITS mm						

TO
RF