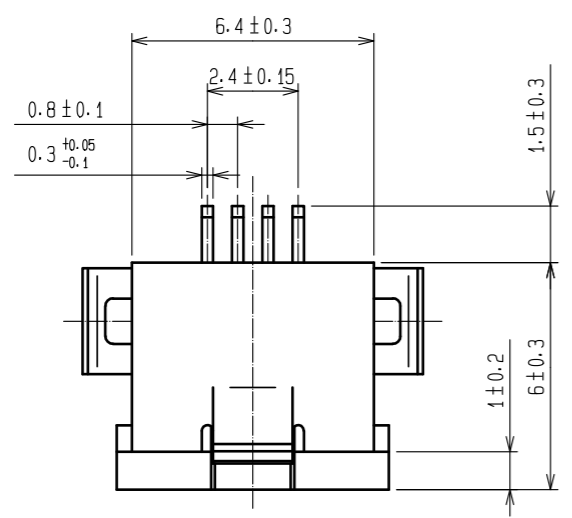
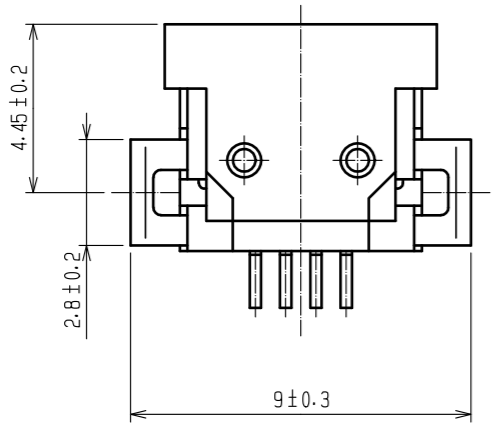
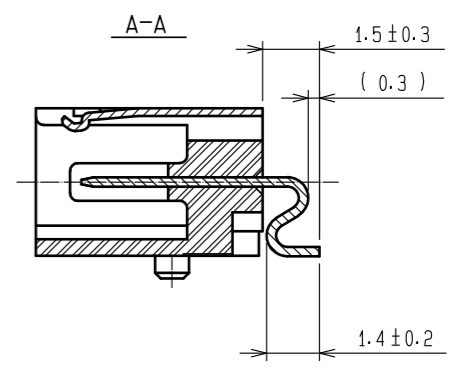
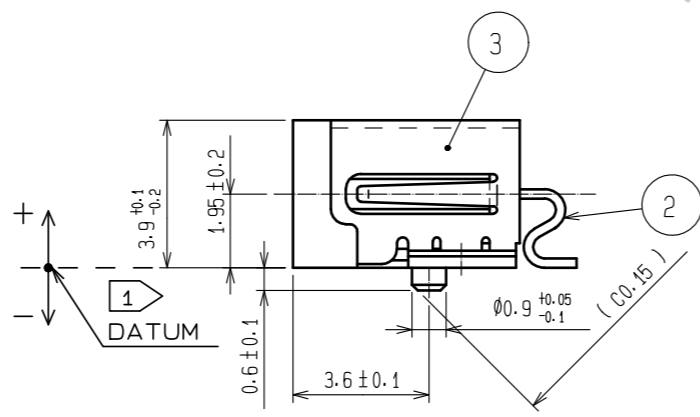
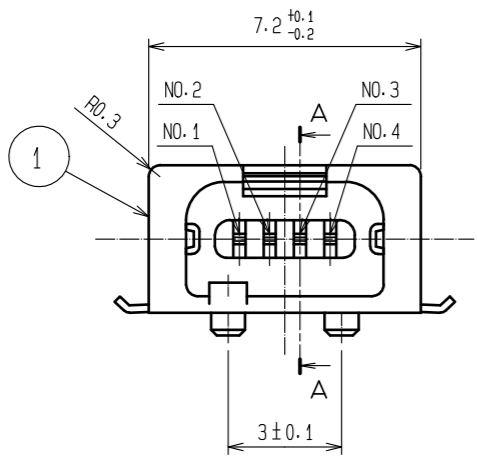
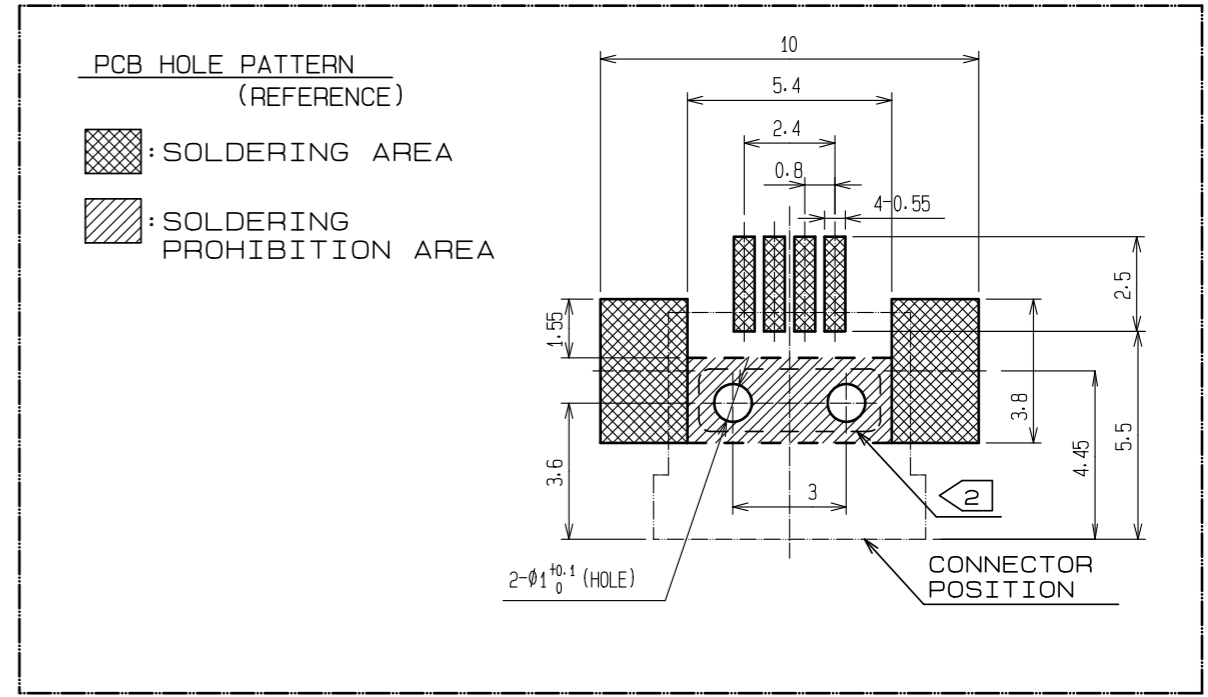
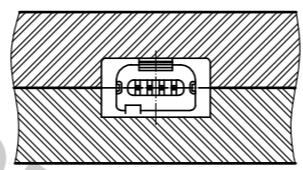


Oct.1.2018 Copyright 2018 HIROSE ELECTRIC CO., LTD. All Rights Reserved.  
 In case that the application demands a high level of reliability, such as automotive,  
 please contact a company representative for further information.



② FIXED BY EQUIPMENT  
(REFERENCE)



NOTES

- ① COPLANARITY (INCLUDING METAL FITTING) SHALL BE 0<sup>0</sup>-0.15 FROM DATUM.
- ② FIXING TO PCB OF THIS PRODUCT IS SOLDER TYPE.  
 WE RECOMMEND TO USE ADHESIVE ON PCB SURFACE.  
 PLEASE ALSO FIX THIS PRODUCT BY THE BODY OF EQUIPMENT ITSELF.
- 3. DIRECTIONS FOR USE.  
 ・PLEASE DO NOT USE FOR THE PURPOSE OF INTERRUPTING THE CURRENT.

3	STAINLESS STEEL	PLATING : GOLD FLASH
2	COPPER ALLOY	CONTACT AREA : PALLADIUM-NICKEL 0.7μm + GOLD 0.2μm min. LEAD AREA : GOLD FLASH UNDER PLATING : NICKEL 1.27μm min.
1	POLYAMIDE	BLACK UL94V-0
NO.	MATERIAL	FINISH . REMARKS

UNITS mm		SCALE 5 : 1	COUNT △	DESCRIPTION OF REVISIONS	DESIGNED	CHECKED	DATE
HIROSE ELECTRIC CO., LTD.				APPROVED : NM. NISHIMATSU 15.10.27	DRAWING NO. EDC-120842-30-00		
				CHECKED : KN. ICHIKAWA 15.10.27	PART NO. MQ172X-4PA(30)		
				DESIGNED : TS. ITO 15.10.27	CODE NO. CL206-2000-6-30		
				DRAWN : AK. AKIYAMA 15.10.27	1/1		