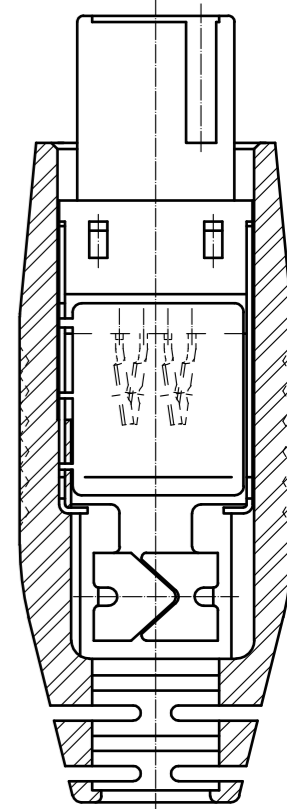
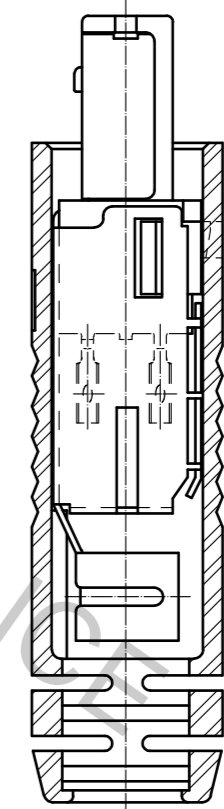
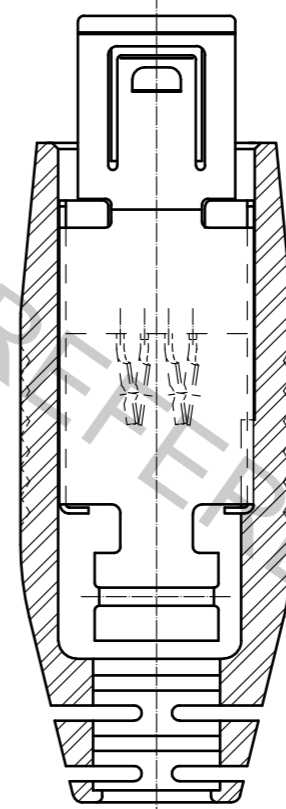
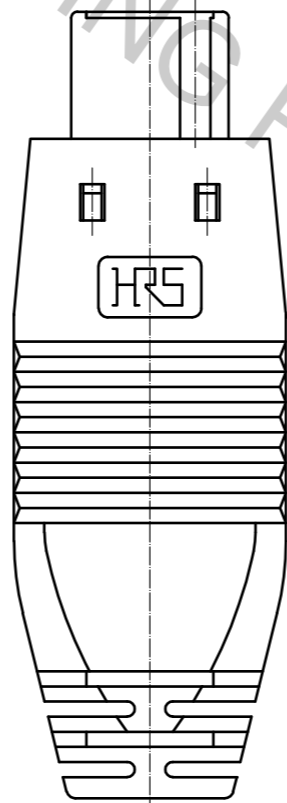
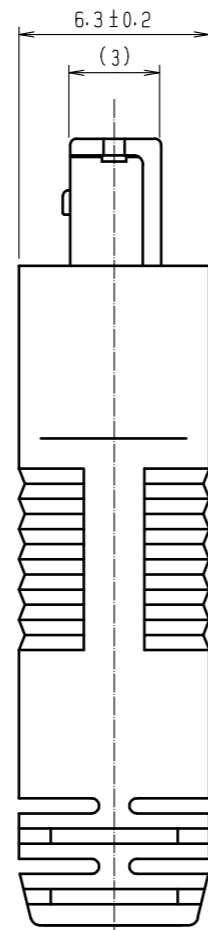
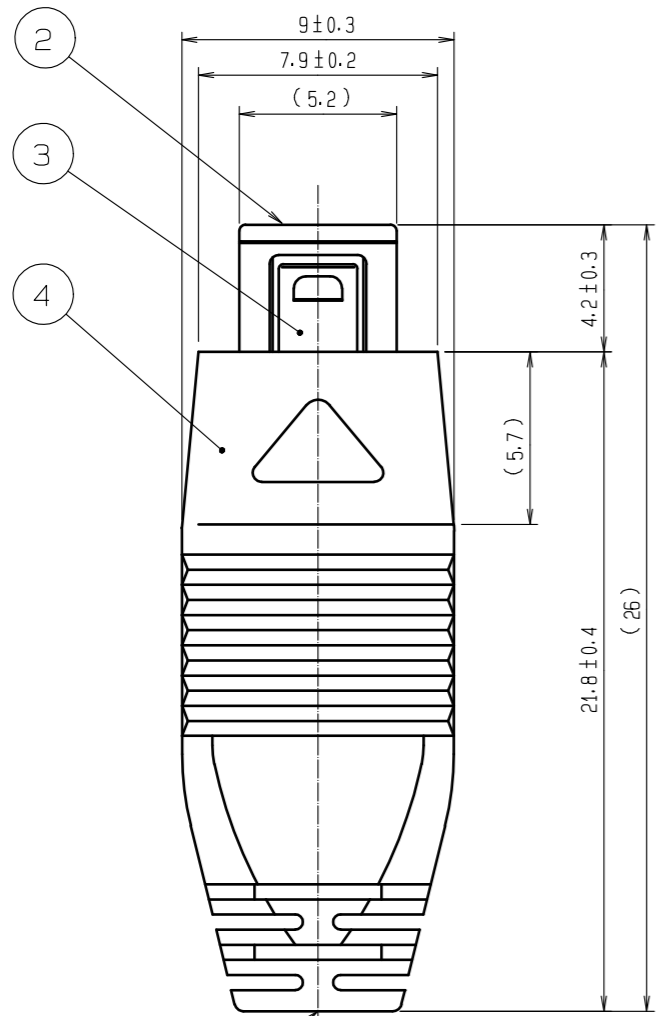
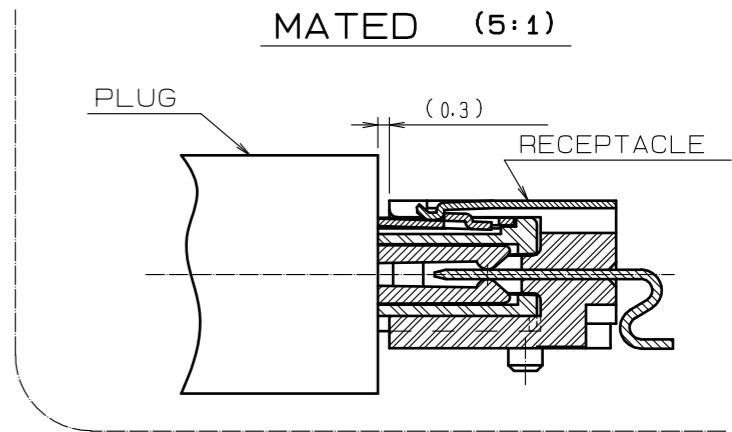
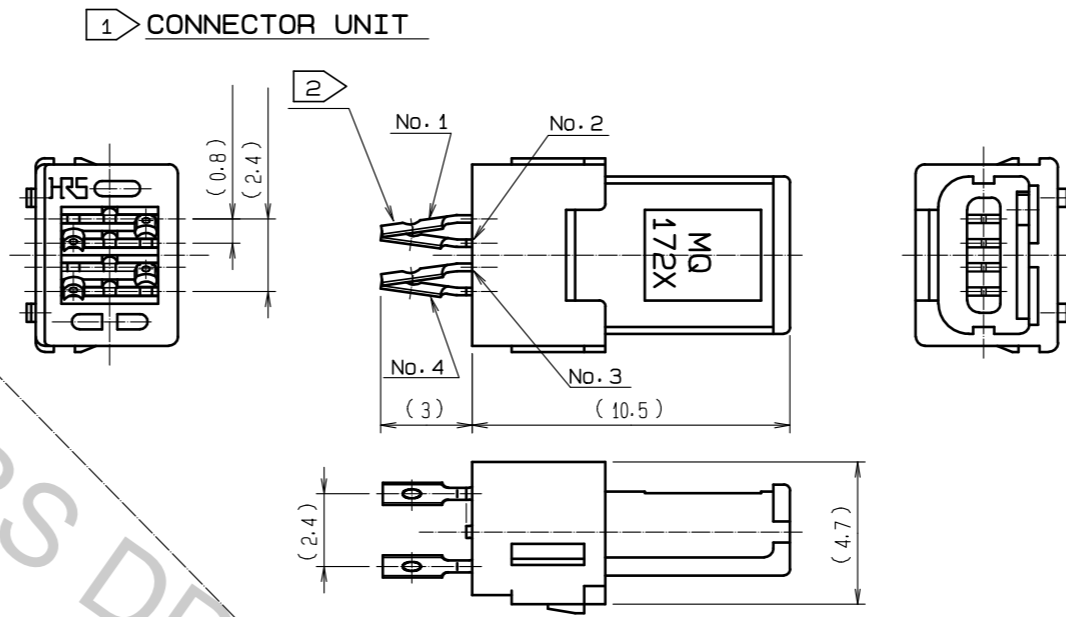
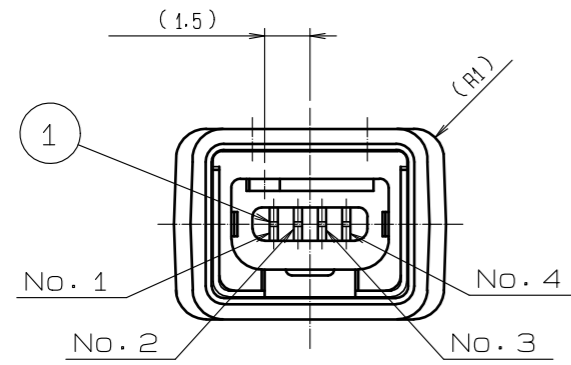
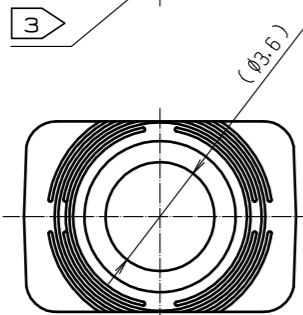


Oct.1.2018 Copyright 2018 HIROSE ELECTRIC CO., LTD. All Rights Reserved.
 In case that the application demands a high level of reliability, such as automotive,
 please contact a company representative for further information.



CONSTRUCTION (REFERENCE)



NOTES

- 1 COMPONENTS OF REF.NO.3 AND NO.4 ARE APPENDED PRODUCTS EXCEPT CONNECTOR UNIT (ASSEMBLED REF.NO1 AND NO.2).
- 2 TERMINAL AREA SHALL BE COVERD WITH SHRINKAGE TUBE AFTER SOLDERING.
- 3 PROJECTION OF GATE IS 0.8 MAX.
- 4 DIRECTIONS FOR USE.
 *PLEASE DO NOT USE FOR THE PURPOSE OF INTERRUPTING THE CURRENT.

2	POLYAMIDE	BLACK UL94V-0	4	POLYAMIDE	BLACK UL94V-0
1	COPPER ALLOY	SELECTIVE GOLD PLATED +SELECTIVE TIN-LEAD PLATED	3	STAINLESS STEEL	
NO.	MATERIAL	FINISH . REMARKS	NO.	MATERIAL	FINISH . REMARKS
UNITS mm		SCALE 4 : 1	COUNT		DESCRIPTION OF REVISIONS
DESIGNED		CHECKED		DATE	
APPROVED : NM. NISHIMATSU			15.10.27		DRAWING NO.
CHECKED : KN. ICHIKAWA			15.10.27		PART NO.
DESIGNED : TS. ITO			15.10.27		CODE NO.
DRAWN : AK. AKIYAMA			15.10.27		
					EDC-120843-30-00
					MQ172X-4SA-CV(30)
					CL206-2001-9-30
					1/1