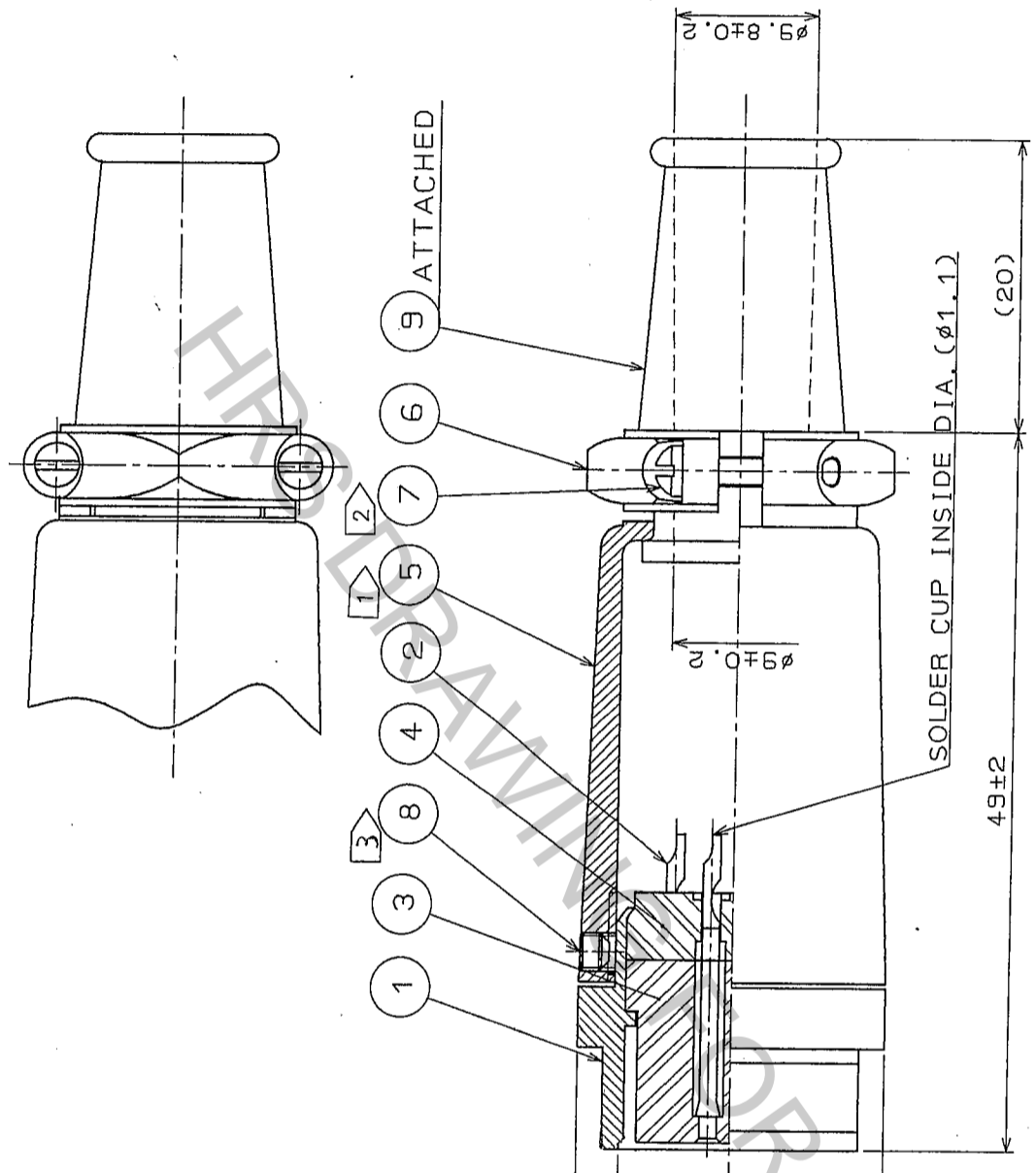
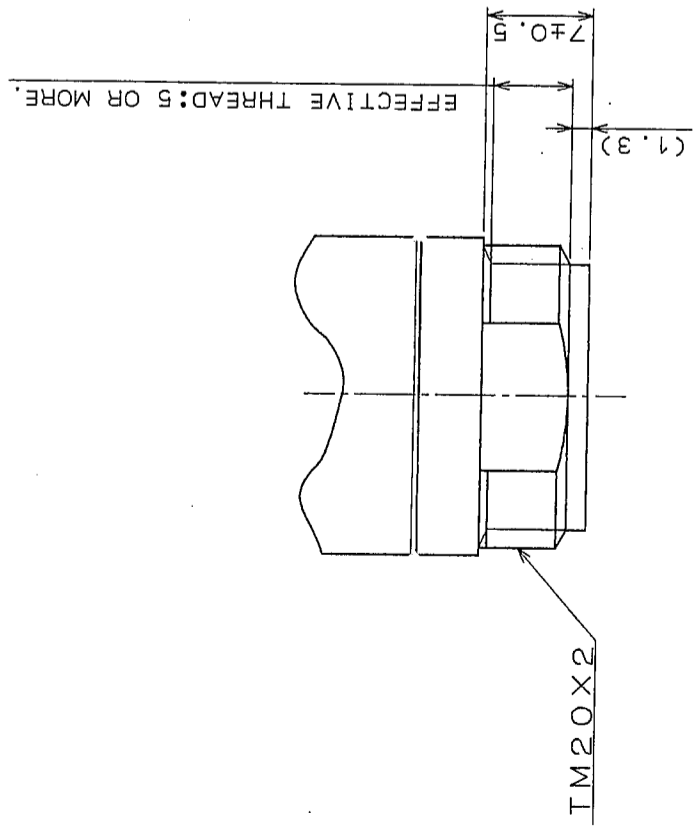


In case that the application demands a high level of reliability, such as automotive, please contact a company representative for further information.

6	7	8					
NO. OF REVISIONS	BY	CHKD	DATE	DESCRIPTION OF REVISIONS	BY	CHKD	DATE
1							
2							
3							



- ① THE RECOMMENDED CLAMP TORQUE OF REF.NO. ⑤ TO BE 2 TO 3 N · m.
- ② THE RECOMMENDED CLAMP TORQUE OF REF.NO. ⑦ TO BE 0.12 TO 0.15 N · m.
- ③ THE RECOMMENDED CLAMP TORQUE OF REF.NO. ⑧ TO BE 0.3 TO 0.4 N · m.

④ RECOMMENDED ADHESIVE TO PREVENT LOOSENESS OF THE SCREW FOR REF.NO. ⑧ : PRODUCT NO. LOCTITE 242.
 4 ROTATION EXAMPLES OF REF.NO. ① AND ⑤ ARE SHOWN.

NO.	MATERIAL	FINISH	REMARKS	NO.	MATERIAL	FINISH	REMARKS
5	ALUMINUM ALLOY	MATTE FINISH ALUMITE (SILVER)		9	CR	(BLACK)	
4	DIALYL PHTHALATE	(BLACK)	UL94V-0	8	STEEL	NICKEL PLATING	HEXAGON SOCKET SET SCREW M2.6X0.4X2
3	DIALYL PHTHALATE	(BLACK)	UL94V-0	7	BRASS	NICKEL PLATING	M2X0.4X8
2	COPPER ALLOY	SILVER PLATING 3 μm min.		6	ALUMINUM ALLOY	MATTE FINISH ALUMITE (SILVER)	
1	ZINC ALLOY	MATTE FINISH CHROME PLATE					

DRAWING NO. EDC3-006654-71	PART NO. RM15TJD-10S (71)
SCALE 2 : 1	CODE NO. CL109-0603-1-71
UNITS mm	FORM NO. 8 FORM No.229

TO
R