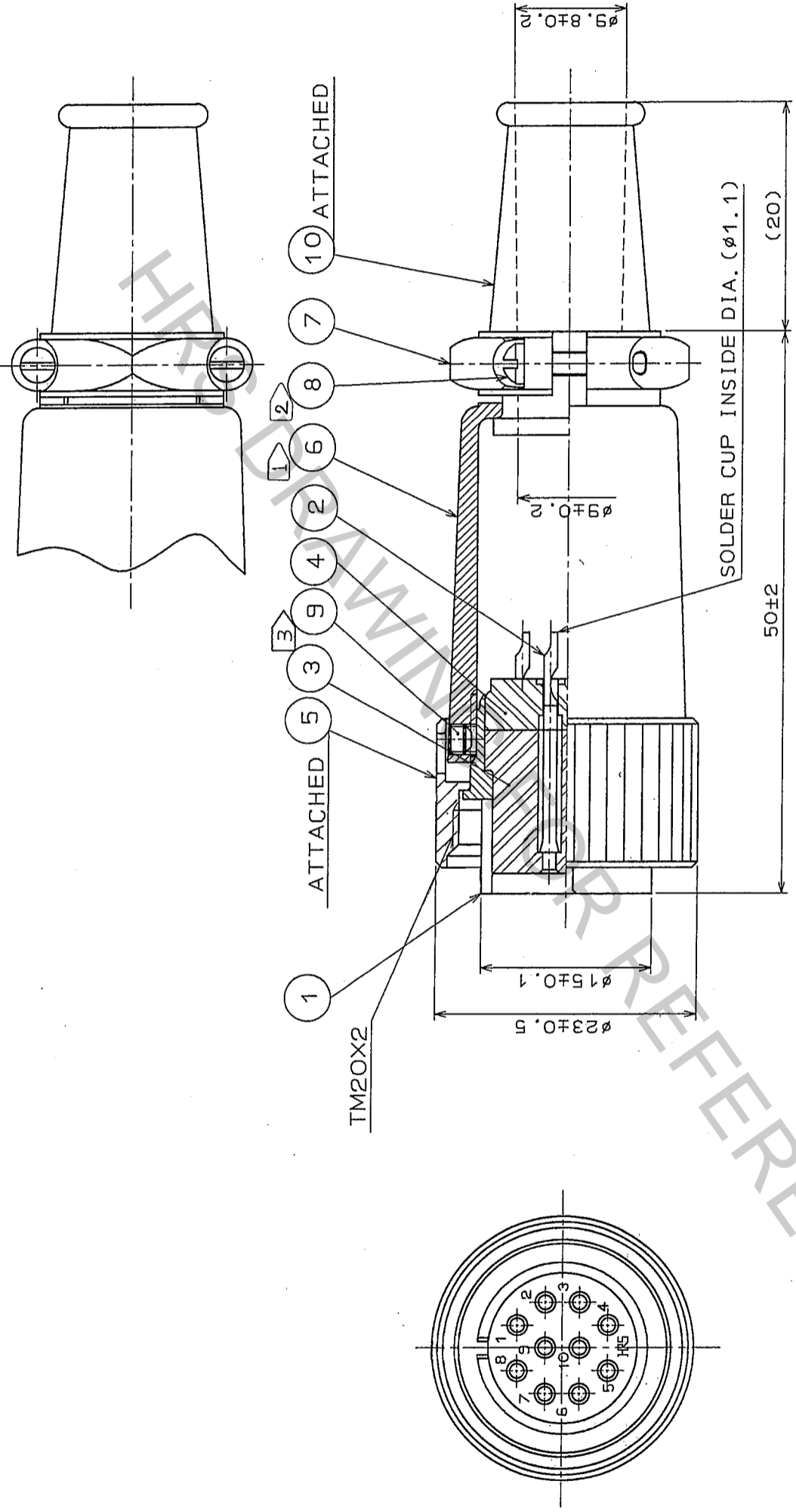


Oct.1.2018 Copyright 2018 HIROSE ELECTRIC CO., LTD. All Rights Reserved.
 In case that the application demands a high level of reliability, such as automotive,
 please contact a company representative for further information.

NO.	DESCRIPTION OF REVISIONS	BY	CHKD	DATE	COUNT	DESCRIPTION OF REVISIONS	BY	CHKD	DATE
1									
2									
3									
4									
5									



NOTES
 1 THE RECOMMENDED CLAMP TORQUE OF REF.NO. ⑥ TO BE 2 TO 3 N·m.
 2 THE RECOMMENDED CLAMP TORQUE OF REF.NO. ⑧ TO BE 0.12 TO 0.15 N·m.
 3 THE RECOMMENDED CLAMP TORQUE OF REF.NO. ⑨ TO BE 0.3 TO 0.4 N·m.
 4 RECOMMENDED ADHESIVE TO PREVENT LOOSENESS OF THE SCREW FOR REF.NO. ⑨ : PRODUCT NO. LOCTITE 242.
 5 ROTATION EXAMPLES OF REF.NO. ① AND ⑥ ARE SHOWN.

NO.	MATERIAL	FINISH., REMARKS	NO.	MATERIAL	FINISH., REMARKS
5	BRASS	MATTE FINISH CHROME PLATE (BLACK)	10	CR	(BLACK)
4	DIALYL PHTHALATE (BLACK)	UL94V-0	9	STEEL	NICKEL PLATING (BLACK)
3	DIALYL PHTHALATE (BLACK)	UL94V-0	8	BRASS	NICKEL PLATING
2	COPPER ALLOY	SILVER PLATING 5 μm min.	7	ALUMINUM ALLOY	MATTE FINISH ALUMITE (CHROME)
1	ZINC ALLOY	MATTE FINISH CHROME PLATE	6	ALUMINUM ALLOY	MATTE FINISH ALUMITE (CHROME)

DESIGNED	Y. Yamada	CHECKED	H. Zemba	APPROVED	M. Sato	RELEASED
DRAWN	Y. Yamada	DATE	05.09.12	SCALE	1:1	

DRAWING NO.	EDC3-007608-71	PART NO.	RM15TPD-10S(71)
SCALE	2:1	CODE NO.	CL109-0686-9-71
UNITS	mm		