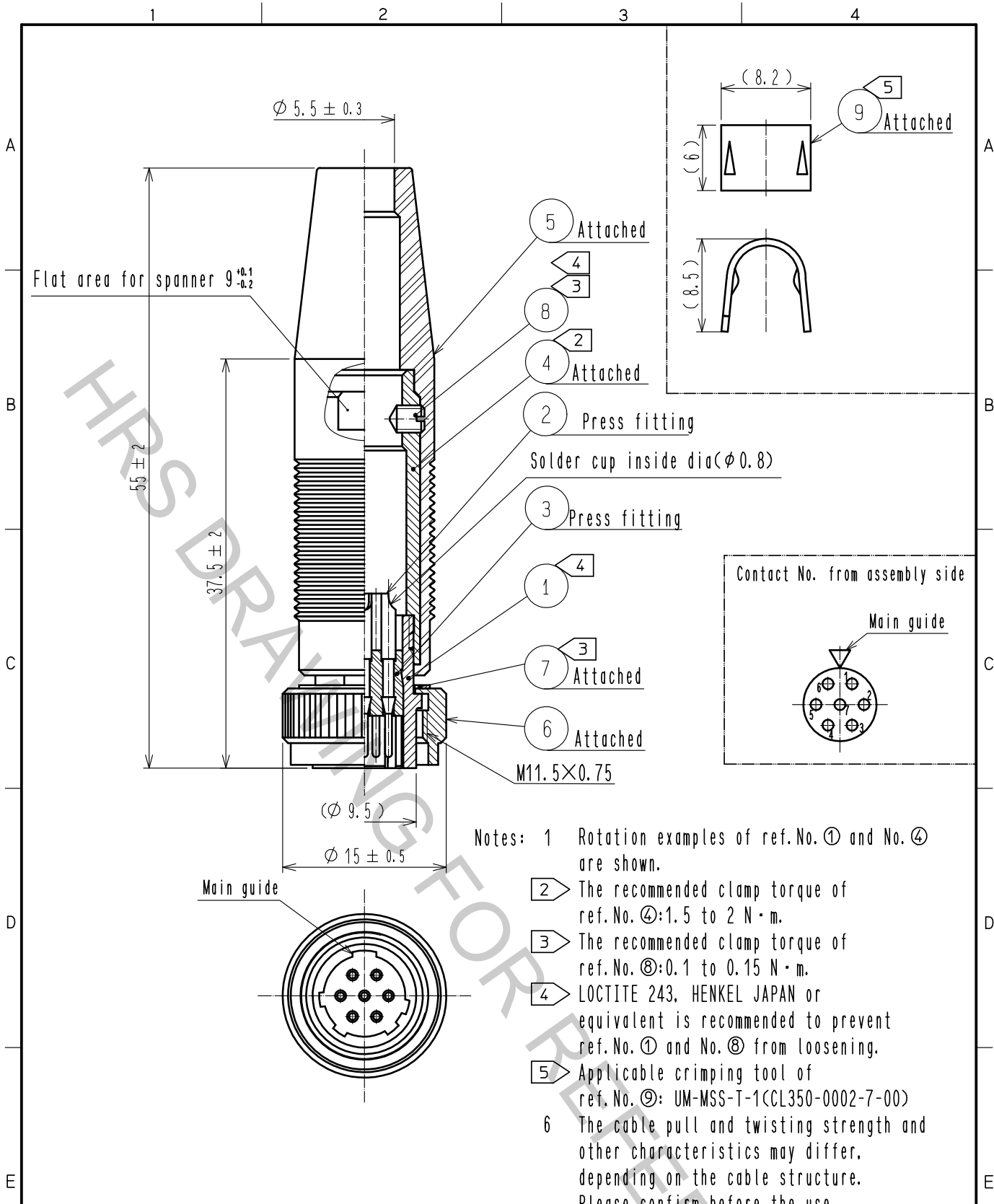


Oct.1.2018 Copyright 2018 HIROSE ELECTRIC CO., LTD. All Rights Reserved.
 In case that the application demands a high level of reliability, such as automotive,
 please contact a company representative for further information.



- Notes:
- 1 Rotation examples of ref.No.① and No.④ are shown.
 - 2 The recommended clamp torque of ref.No.④:1.5 to 2 N·m.
 - 3 The recommended clamp torque of ref.No.⑧:0.1 to 0.15 N·m.
 - 4 LOCTITE 243, HENKEL JAPAN or equivalent is recommended to prevent ref.No.① and No.⑧ from loosening.
 - 5 Applicable crimping tool of ref.No.⑨: UM-MSS-T-1(CL350-0002-7-00)
 - 6 The cable pull and twisting strength and other characteristics may differ, depending on the cable structure. Please confirm before the use.

5	Chloroprene rubber	(Black)			
4	Brass	Nickel plating	9	Brass	
3	Polyacetal	(Black)	8	Steel	Chromate treatment (Trivalent chromium) JIS B 1117 M2.5×0.45×3
2	Brass	Silver plating 3μm min.	7	Brass	Nickel plating
1	Zinc alloy	Nickel plating	6	Brass	Nickel plating
NO.	MATERIAL	FINISH . REMARKS	NO.	MATERIAL	FINISH . REMARKS

UNITS mm		SCALE 2 : 1	COUNT 	DESCRIPTION OF REVISIONS	DESIGNED	CHECKED	DATE
HIROSE ELECTRIC CO., LTD.				APPROVED :SU. OBARA 16.03.25 CHECKED :HY. KOBAYASHI 16.03.25 DESIGNED :DS. MATSUNE 16.03.25 DRAWN :DS. MATSUNE 16.03.25	DRAWING NO. EDC-009297-71-00 PART NO. SR30-10PF-7P(71) CODE NO. CL103-0316-1-71	1/1	