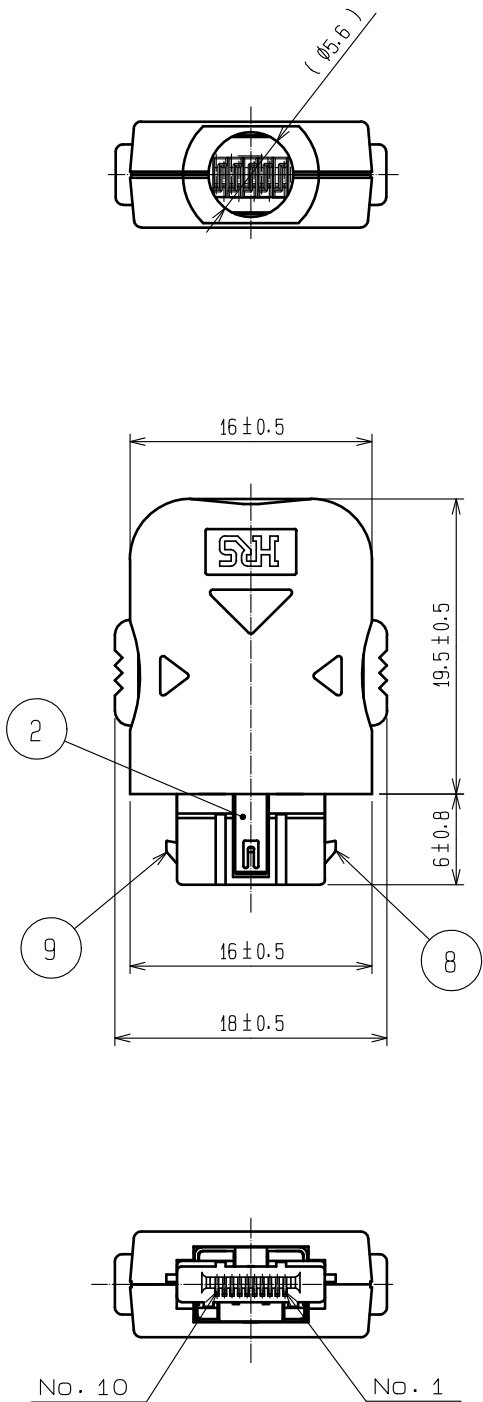
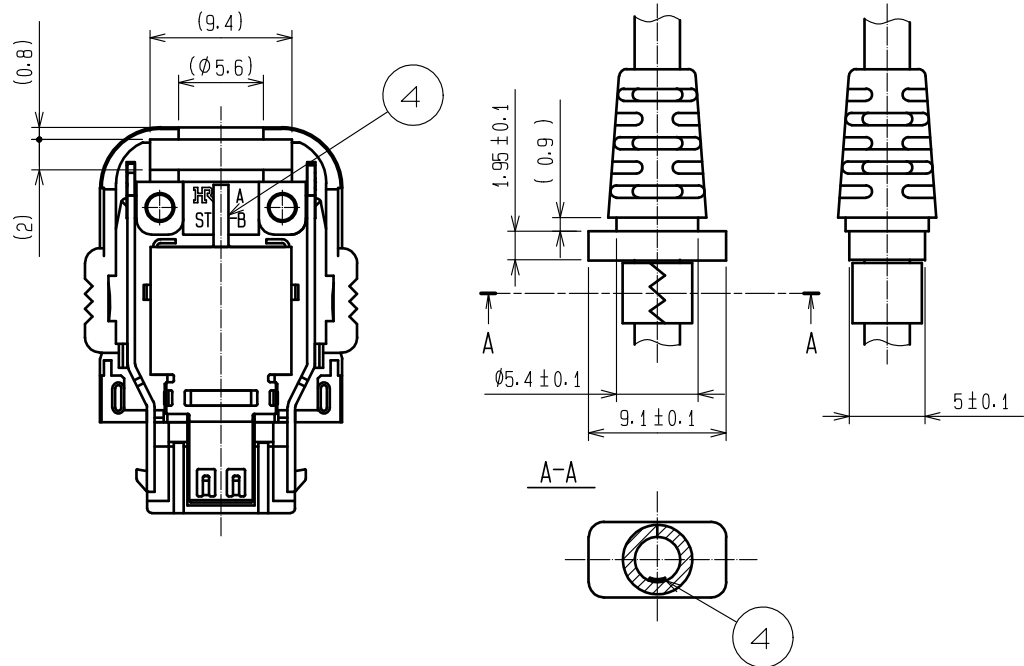


Oct.1.2018 Copyright 2018 HIROSE ELECTRIC CO., LTD. All Rights Reserved.
In case that the application demands a high level of reliability, such as automotive,
please contact a company representative for further information.



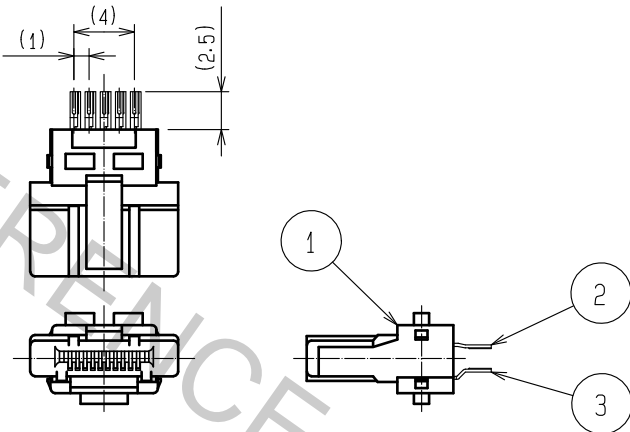
NOTE 1 LESS THAN $\phi 4$ mm IS PRESUMED CABLE SIZE.
2 CABLE SHALL BE OVERMOLDED WITH BUSHING TO FIX.
USE NON-MIGRATION RESIN FOR OVERMOLDING.
3 <PLATING>
CONTACT AREA: GOLD PLATED 0.2 μ m MIN.
LEAD AREA: GOLD PLATED FLASH.
UNDER PLATING: NICKEL PLATED 2 μ m MIN.
THE PRODUCT IS DELIVERED IN FOLLOWING CONDITIONS:
UNIT WITH REF 1 ASSEMBLED TO REF 2 AND 3, COVER
WITH REF 6 ASSEMBLED TO REF 8 AND 9, AND REF 4,
5, 7, 10 DISASSEMBLED.

2 BUSHING ASSEMBLY DIMENSIONS FOR REFERENCE



CABLE SHIELD IS CONNECTED BY CAULKING OF THE CLAMP METAL
(COMMERCIAL ITEM) FITTING WITH CONNECTOR SHIELD REF 4.

CONNECTOR UNIT



5	STAINLESS STEEL		10	STEEL	BLACK CHROMATE Cr3. (TAPPING SCREW)
4	STAINLESS STEEL		9	STAINLESS STEEL	
3	COPPER ALLOY	3	8	STAINLESS STEEL	
2	COPPER ALLOY	3	7	ABS OR PC	(BLACK)UL
1	PA	(BLACK)UL94V-0	6	ABS OR PC	(BLACK)UL
NO.	MATERIAL	FINISH . REMARKS	NO.	MATERIAL	FINISH . REMARKS
UNITS mm		SCALE 2 : 1	COUNT 	DESCRIPTION OF REVISIONS	DESIGNED
HIROSE ELECTRIC CO., LTD.		APPROVED : NM. NISHIMATSU	15.10.27	DRAWING NO.	EDC-124682-30-00
		CHECKED : KN. ICHIKAWA	15.10.27	PART NO.	ST40X-10S-CV(30)
		DESIGNED : TS. ITO	15.10.27	CODE NO.	CL241-0041-0-30
		DRAWN : AK. AKIYAMA	15.10.27		