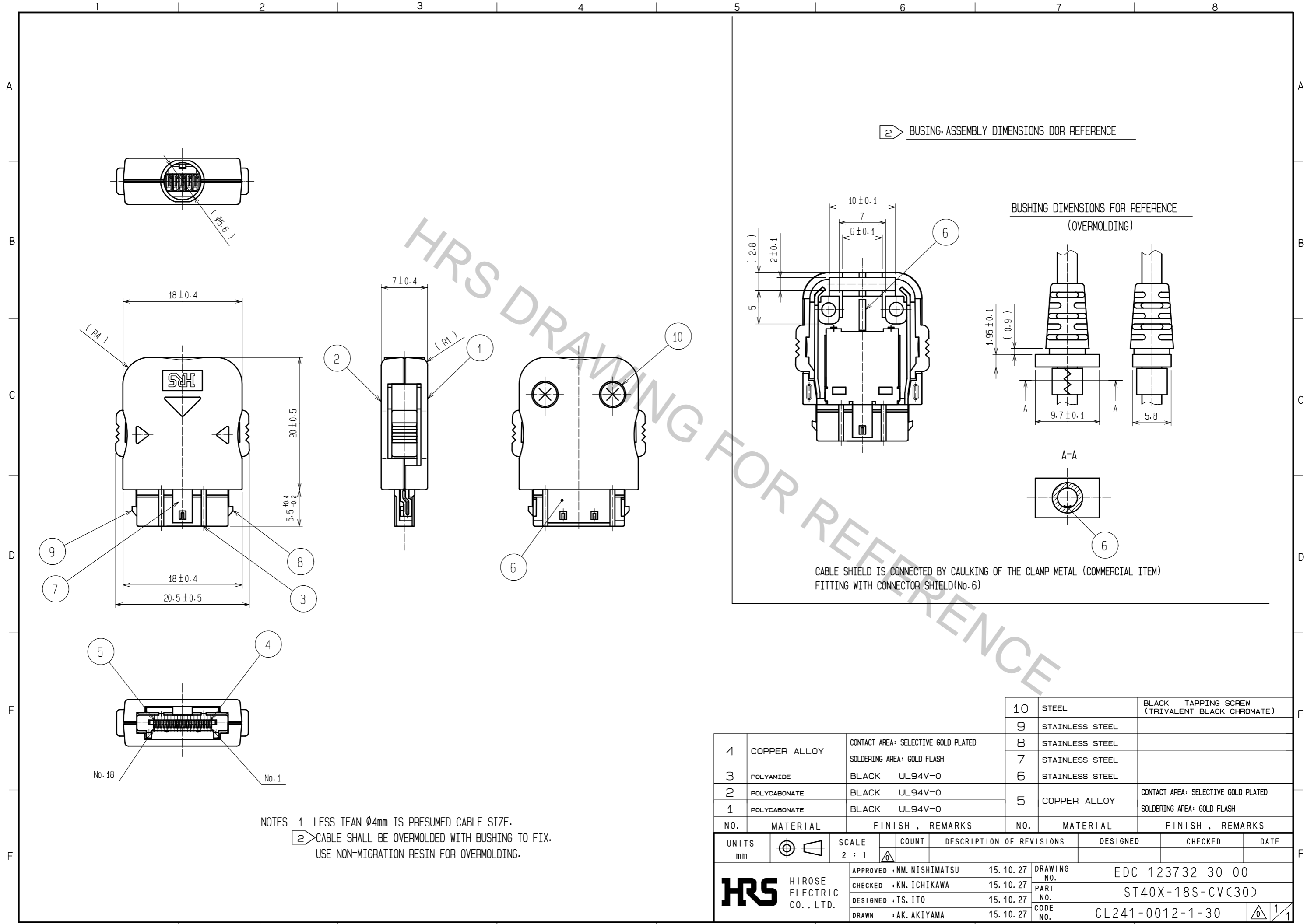


Oct.1.2018 Copyright 2018 HIROSE ELECTRIC CO., LTD. All Rights Reserved.
 In case that the application demands a high level of reliability, such as automotive,
 please contact a company representative for further information.



NOTES 1 LESS TEAN $\phi 4\text{mm}$ IS PRESUMED CABLE SIZE.
 2 CABLE SHALL BE OVERMOLDED WITH BUSHING TO FIX.
 USE NON-MIGRATION RESIN FOR OVERMOLDING.

NO.	MATERIAL	FINISH . REMARKS	NO.	MATERIAL	FINISH . REMARKS
10	STEEL		10	STEEL	BLACK TAPPING SCREW (TRIVALENT BLACK CHROMATE)
9	STAINLESS STEEL		9	STAINLESS STEEL	
8	STAINLESS STEEL		8	STAINLESS STEEL	
7	STAINLESS STEEL		7	STAINLESS STEEL	
6	STAINLESS STEEL		6	STAINLESS STEEL	
5	COPPER ALLOY	CONTACT AREA: SELECTIVE GOLD PLATED SOLDERING AREA: GOLD FLASH	5	COPPER ALLOY	CONTACT AREA: SELECTIVE GOLD PLATED SOLDERING AREA: GOLD FLASH
4	COPPER ALLOY	CONTACT AREA: SELECTIVE GOLD PLATED SOLDERING AREA: GOLD FLASH			
3	POLYAMIDE	BLACK UL94V-0			
2	POLYCARBONATE	BLACK UL94V-0			
1	POLYCARBONATE	BLACK UL94V-0			

UNITS	SCALE	COUNT	DESCRIPTION OF REVISIONS	DESIGNED	CHECKED	DATE
mm	2 : 1	1				
HIROSE ELECTRIC CO., LTD.			APPROVED : NM. NISHIMATSU 15.10.27 CHECKED : KN. ICHIKAWA 15.10.27 DESIGNED : TS. ITO 15.10.27 DRAWN : AK. AKIYAMA 15.10.27	DRAWING NO. EDC-123732-30-00 PART NO. ST40X-18S-CV(30) CODE NO. CL241-0012-1-30		