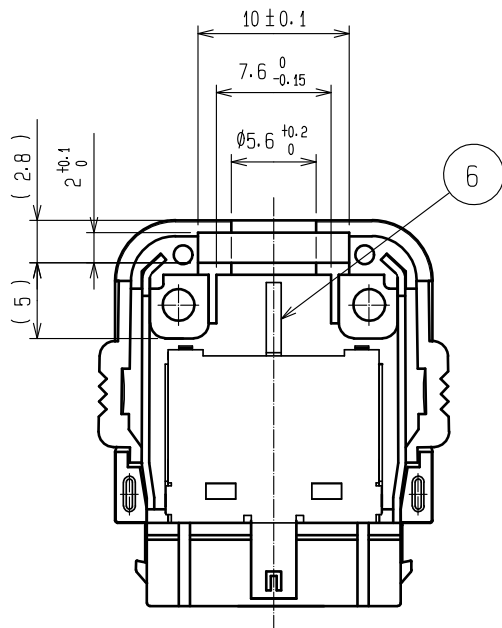
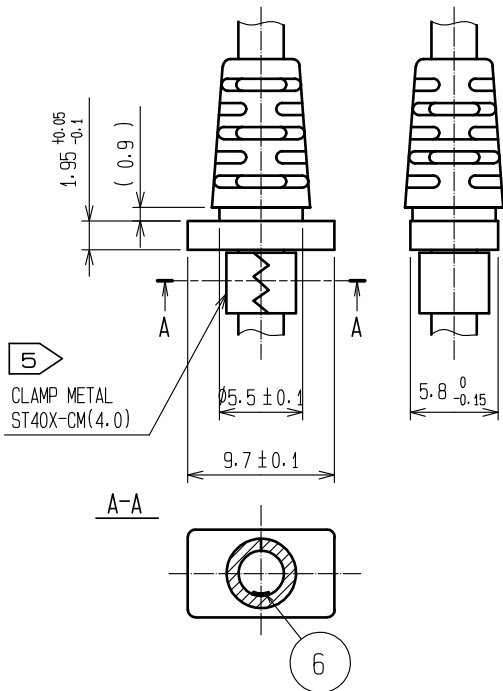


- NOTE 1 LESS THAN $\phi 4$ mm IS PRESUMED CABLE SIZE.
- 2 CABLE SHALL BE OVERMOLDED WITH BUSHING TO FIX.
USE NON-MIGRATION RESIN FOR OVERMOLDING.
- 3 <PLATING>
CONTACT AREA: GOLD PLATED 0.2 μ m MIN.
LEAD AREA: GOLD PLATED FLASH.
UNDER PLATING: NICKEL PLATED 2 μ m MIN.
- 4 THE PRODUCT IS DELIVERED IN FOLLOWING CONDITIONS:
UNIT WITH REF 3 ASSEMBLED TO REF 4 AND 5. COVER
WITH REF 1 ASSEMBLED TO REF 8 AND 9, AND REF 2, 6, 7, 10 DISASSEMBLED.
- 5 CLAMP METAL FOR THIS PRODUCT IS SOLD SEPARATELY.

2 BUSHING ASSEMBLY DIMENSIONS FOR REFERENCE



BUSHING DIMENSIONS FOR REFERENCE
(OVERMOLDING)



CABLE SHIELD IS CONNECTED BY CAULKING OF CLAMP METAL (COMMERCIAL ITEM)
FITTING WITH CONNECTOR SHIELD REF 6.

5	COPPER ALLOY	3	10	STEEL	BLACK CHROMATE Cr3. (TAPPING SCREW)
4			9	STAINLESS STEEL	
3	POLYAMIDE	COLOR: BLACK UL94V-0	8	STAINLESS STEEL	
2	POLYCARBONATE	COLOR: BLACK UL94V-0	7	STAINLESS STEEL	
1	POLYCARBONATE	COLOR: BLACK UL94V-0	6	STAINLESS STEEL	
NO.	MATERIAL	FINISH . REMARKS	NO.	MATERIAL	FINISH . REMARKS
UNITS mm		SCALE 2 : 1	COUNT 	DESCRIPTION OF REVISIONS	DESIGNED CHECKED DATE
HIROSE ELECTRIC CO., LTD.		APPROVED : NM. NISHIMATSU	15.10.27	DRAWING NO.	EDC-123317-30-00
		CHECKED : KN. ICHIKAWA	15.10.27	PART NO.	ST40X-24S-CV(30)
		DESIGNED : TS. ITO	15.10.27	CODE NO.	CL241-0004-3-30
		DRAWN : AK. AKIYAMA	15.10.27		