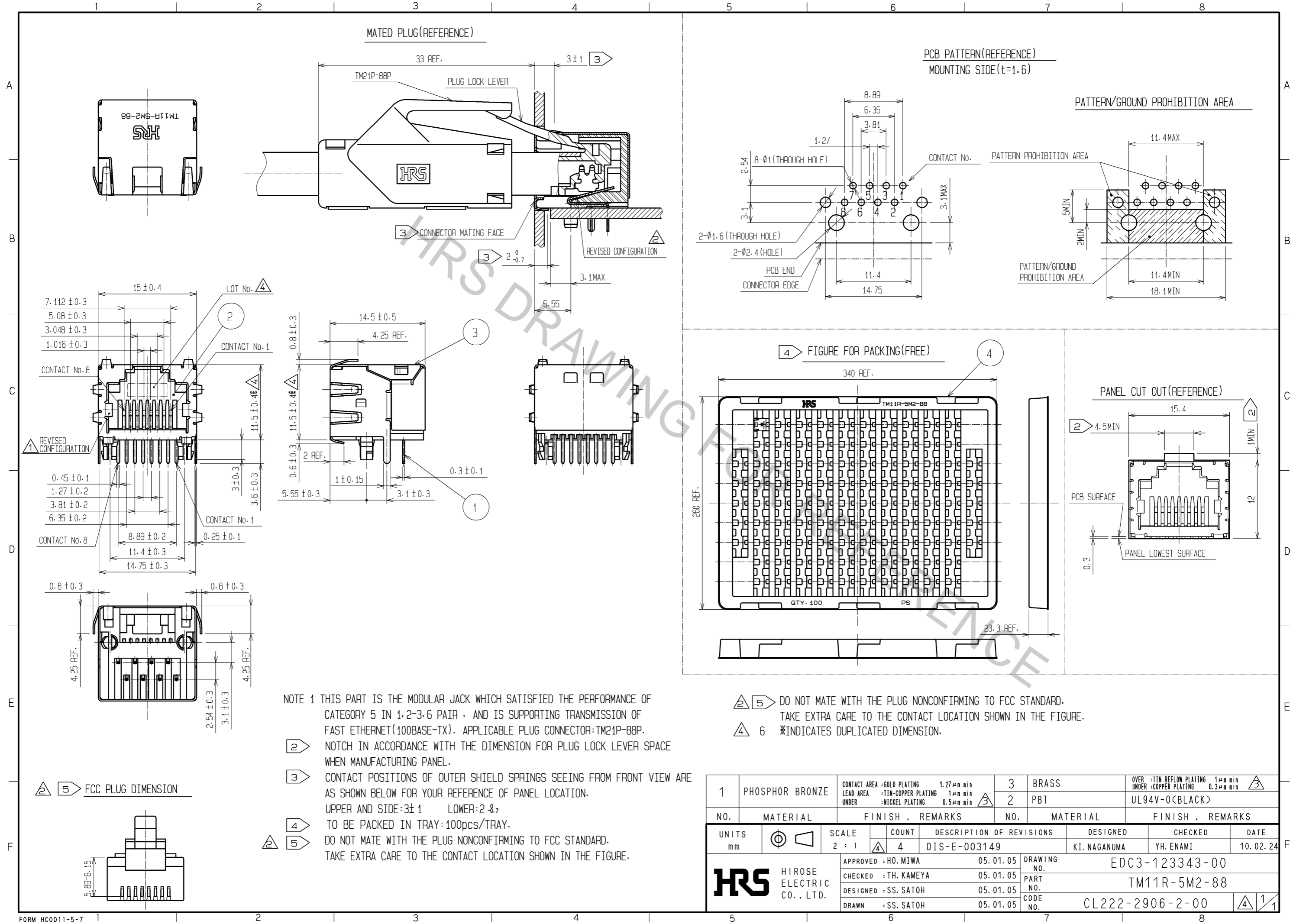


Oct.1.2018 Copyright 2018 HIROSE ELECTRIC CO., LTD. All Rights Reserved.
 In case that the application demands a high level of reliability, such as automotive,
 please contact a company representative for further information.



NOTE 1 THIS PART IS THE MODULAR JACK WHICH SATISFIED THE PERFORMANCE OF CATEGORY 5 IN 1,2-3,6 PAIR . AND IS SUPPORTING TRANSMISSION OF FAST ETHERNET(100BASE-TX). APPLICABLE PLUG CONNECTOR:TM21P-88P.

② NOTCH IN ACCORDANCE WITH THE DIMENSION FOR PLUG LOCK LEVER SPACE WHEN MANUFACTURING PANEL.

③ CONTACT POSITIONS OF OUTER SHIELD SPRINGS SEEING FROM FRONT VIEW ARE AS SHOWN BELOW FOR YOUR REFERENCE OF PANEL LOCATION.
 UPPER AND SIDE:3±1 LOWER:2±1
 TO BE PACKED IN TRAY:100pcs/TRAY.

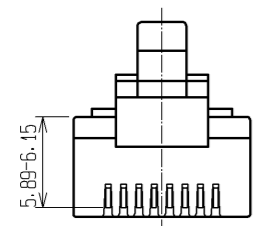
④ TO BE PACKED IN TRAY:100pcs/TRAY.

⑤ DO NOT MATE WITH THE PLUG NONCONFIRMING TO FCC STANDARD.
 TAKE EXTRA CARE TO THE CONTACT LOCATION SHOWN IN THE FIGURE.

⑤ DO NOT MATE WITH THE PLUG NONCONFIRMING TO FCC STANDARD.
 TAKE EXTRA CARE TO THE CONTACT LOCATION SHOWN IN THE FIGURE.

④ 6 *INDICATES DUPLICATED DIMENSION.

⑤ FCC PLUG DIMENSION



| | | | | | | | |
|---------------------|-----------------|---|-------------|--------------------------|---|-----------|------------|
| 1 | PHOSPHOR BRONZE | CONTACT AREA :GOLD PLATING 1.27µm min LEAD AREA :TIN-COPPER PLATING 1µm min UNDER :NICKEL PLATING 0.5µm min | 3 | BRASS | OVER :TIN REFLOW PLATING 1µm min UNDER :COPPER PLATING 0.3µm min | | |
| NO. | MATERIAL | FINISH . REMARKS | NO. | MATERIAL | FINISH . REMARKS | | |
| 2 | PBT | | 2 | PBT | UL94V-0(BLACK) | | |
| UNITS | mm | SCALE | COUNT | DESCRIPTION OF REVISIONS | DESIGNED | CHECKED | DATE |
| | | 2 : 1 | 4 | DIS-E-003149 | KI. NAGANUMA | YH. ENAMI | 10. 02. 24 |
| APPROVED :HO. MIWA | | 05. 01. 05 | DRAWING NO. | | EDC3-123343-00 | | |
| CHECKED :TH. KAMEYA | | 05. 01. 05 | PART NO. | | TM11R-5M2-88 | | |
| DESIGNED :SS. SATOH | | 05. 01. 05 | CODE NO. | | CL222-2906-2-00 | | |
| DRAWN :SS. SATOH | | 05. 01. 05 | | | | | |