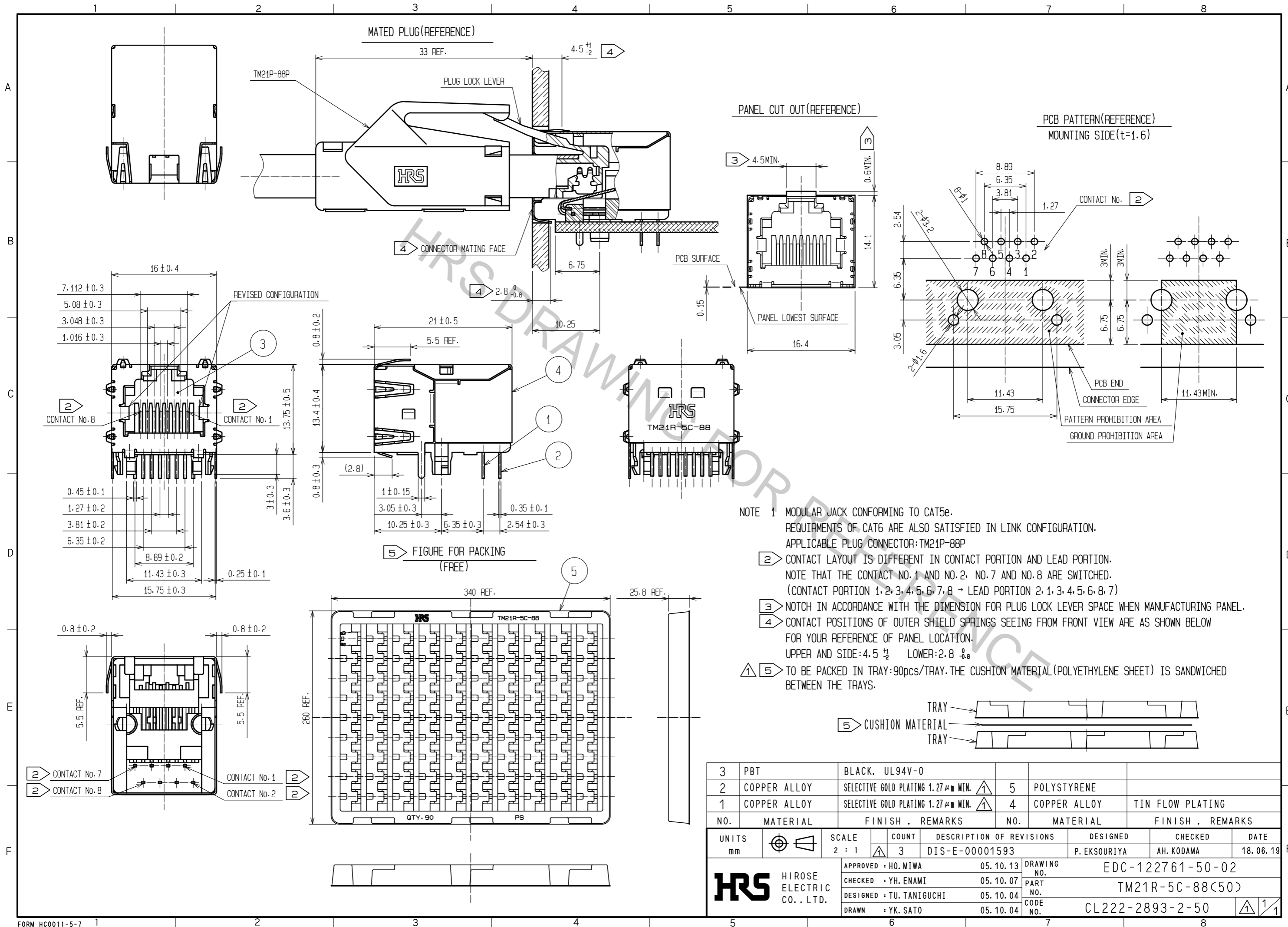


Oct.1.2018 Copyright 2018 HIROSE ELECTRIC CO., LTD. All Rights Reserved.
 In case that the application demands a high level of reliability, such as automotive,
 please contact a company representative for further information.



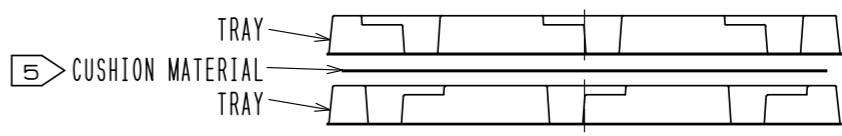
NOTE 1 MODULAR JACK CONFORMING TO CAT5e.
 REQUIREMENTS OF CAT6 ARE ALSO SATISFIED IN LINK CONFIGURATION.
 APPLICABLE PLUG CONNECTOR:TM21P-88P

② CONTACT LAYOUT IS DIFFERENT IN CONTACT PORTION AND LEAD PORTION.
 NOTE THAT THE CONTACT NO.1 AND NO.2, NO.7 AND NO.8 ARE SWITCHED.
 (CONTACT PORTION 1,2,3,4,5,6,7,8 → LEAD PORTION 2,1,3,4,5,6,8,7)

③ NOTCH IN ACCORDANCE WITH THE DIMENSION FOR PLUG LOCK LEVER SPACE WHEN MANUFACTURING PANEL.

④ CONTACT POSITIONS OF OUTER SHIELD SPRINGS SEEING FROM FRONT VIEW ARE AS SHOWN BELOW
 UPPER AND SIDE:4.5 $\frac{H}{2}$ LOWER:2.8 $\frac{H}{2}$

⑤ TO BE PACKED IN TRAY:90PCS/TRAY.THE CUSHION MATERIAL(POLYETHYLENE SHEET) IS SANDWICHED BETWEEN THE TRAYS.



NO.	MATERIAL	FINISH	REMARKS	NO.	MATERIAL	FINISH	REMARKS
3	PBT	BLACK	UL94V-0				
2	COPPER ALLOY	SELECTIVE GOLD PLATING	1.27 μm MIN.	5	POLYSTYRENE		
1	COPPER ALLOY	SELECTIVE GOLD PLATING	1.27 μm MIN.	4	COPPER ALLOY	TIN FLOW PLATING	

UNITS	SCALE	COUNT	DESCRIPTION OF REVISIONS	DESIGNED	CHECKED	DATE
mm	2:1	3	DIS-E-00001593	P. EKSOURIYA	AH. KODAMA	18.06.19

APPROVED	DATE	DRAWING NO.
HO. MIWA	05.10.13	EDC-122761-50-02
YH. ENAMI	05.10.07	
TU. TANIGUCHI	05.10.04	
YK. SATO	05.10.04	

PART NO.	CODE NO.
TM21R-5C-88(50)	CL222-2893-2-50