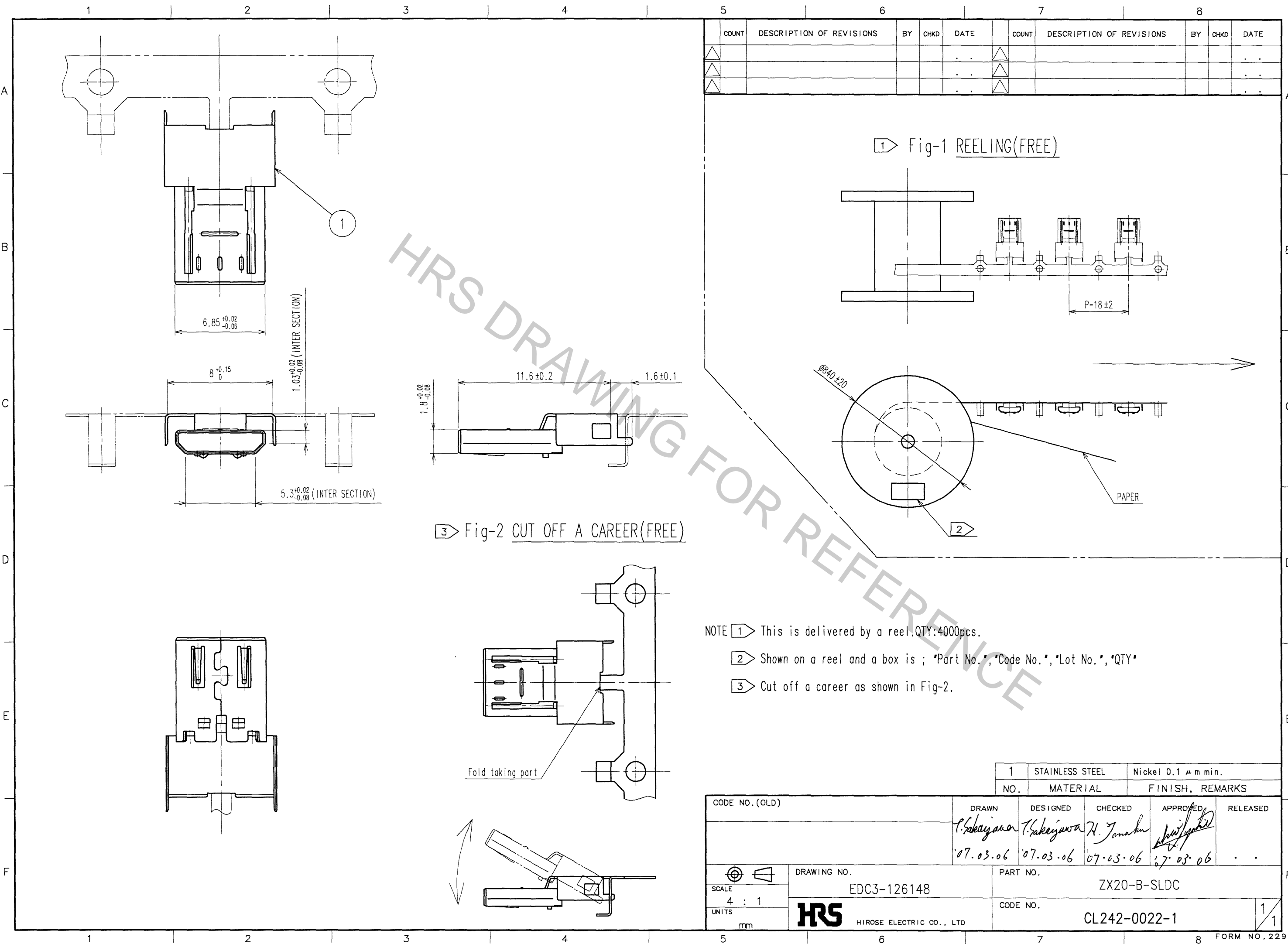


Oct.1.2018 Copyright 2018 HIROSE ELECTRIC CO., LTD. All Rights Reserved.
 In case that the application demands a high level of reliability, such as automotive,
 please contact a company representative for further information.



COUNT	DESCRIPTION OF REVISIONS	BY	CHKD	DATE	COUNT	DESCRIPTION OF REVISIONS	BY	CHKD	DATE
△				..	△				..
△				..	△				..
△				..	△				..

NOTE 1 This is delivered by a reel.QTY:4000pcs.
 2 Shown on a reel and a box is ; "Part No.", "Code No.", "Lot No.", "QTY"
 3 Cut off a career as shown in Fig-2.

1	STAINLESS STEEL	Nickel 0.1 μm min.
NO.	MATERIAL	FINISH, REMARKS

CODE NO. (OLD)	DRAWN P. Sakajawa '07.03.06	DESIGNED P. Sakajawa '07.03.06	CHECKED H. Tanaka '07.03.06	APPROVED <i>[Signature]</i> '07.03.06	RELEASED ..
DRAWING NO. EDC3-126148	PART NO. ZX20-B-SLDC		CODE NO. CL242-0022-1		
SCALE 4 : 1	UNITS mm		HRS HIROSE ELECTRIC CO., LTD		

TO