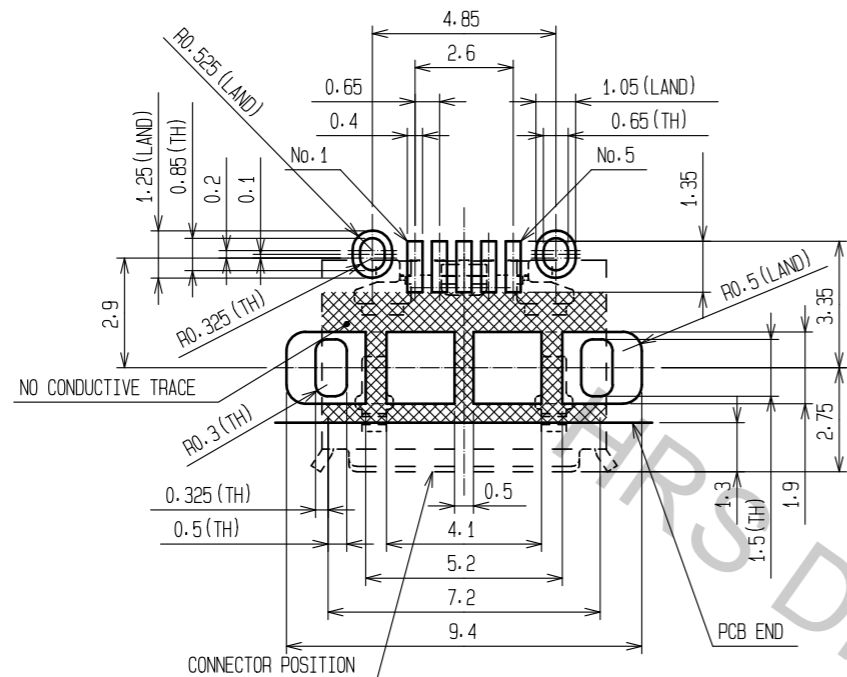
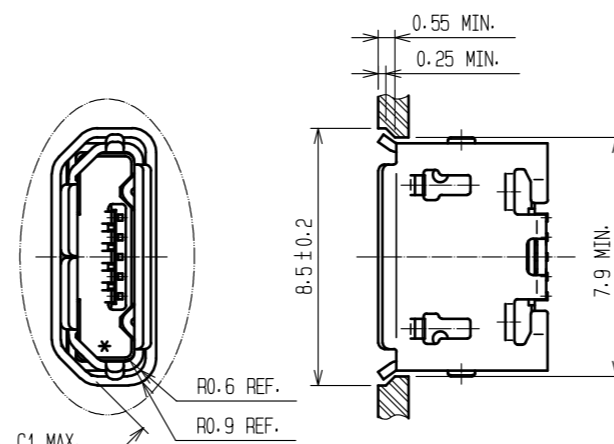


Oct.1.2018 Copyright 2018 HIROSE ELECTRIC CO., LTD. All Rights Reserved.  
 In case that the application demands a high level of reliability, such as automotive,  
 please contact a company representative for further information.

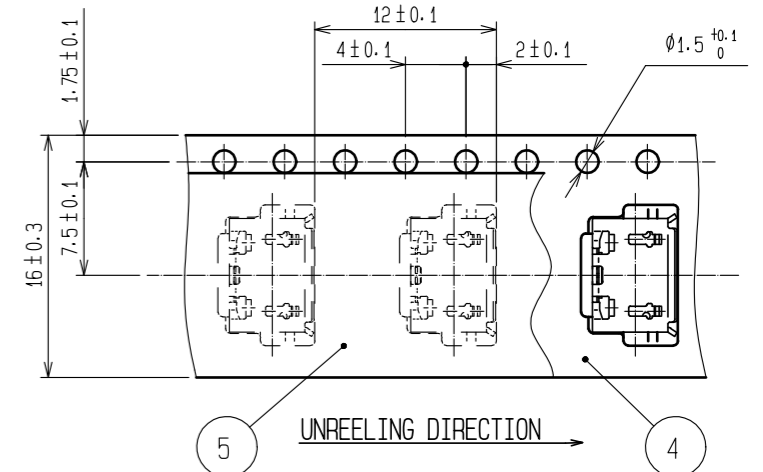
RECOMMENDED PC BOARD PATTERN



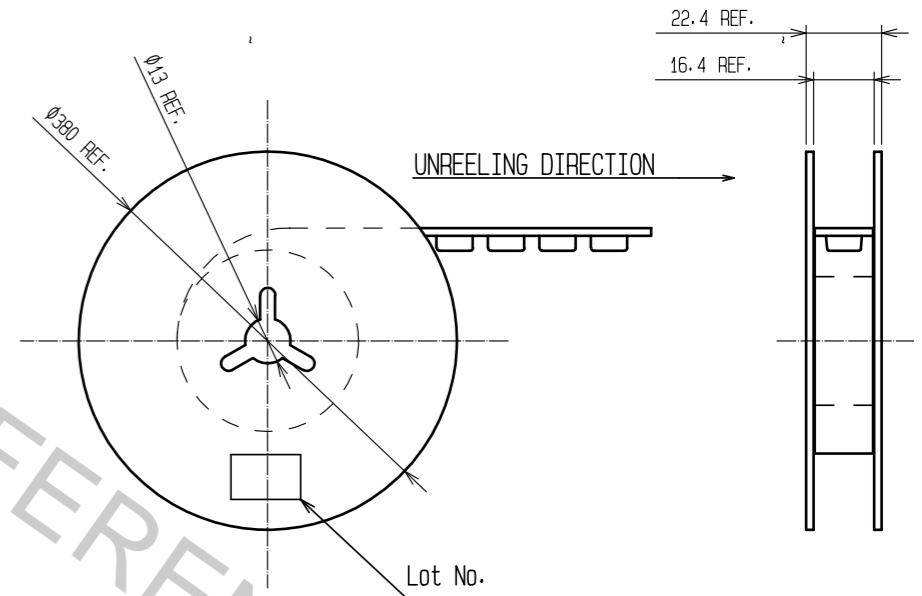
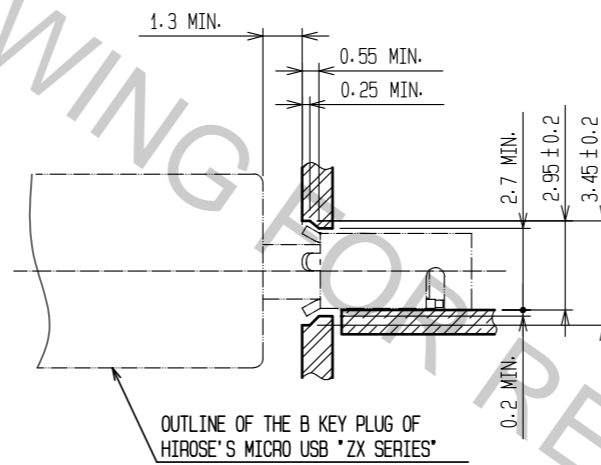
RECOMMENDED PANEL CUTOUT(4:1)



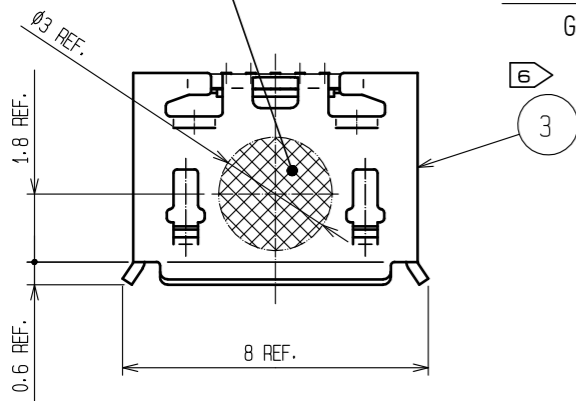
DRAWING FOR PACKING(FREE)



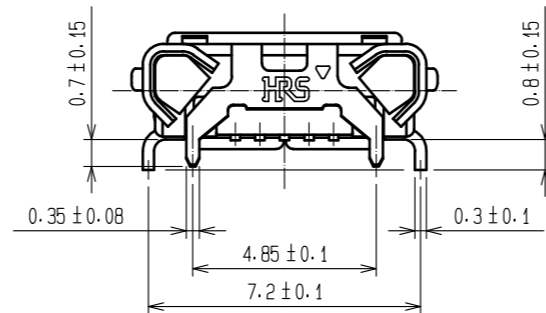
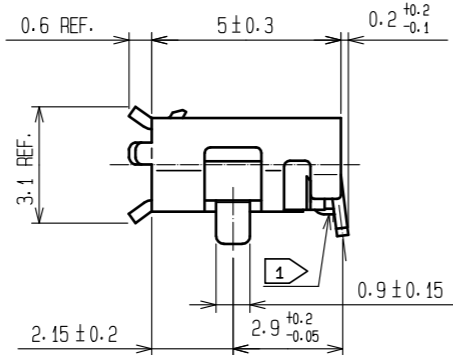
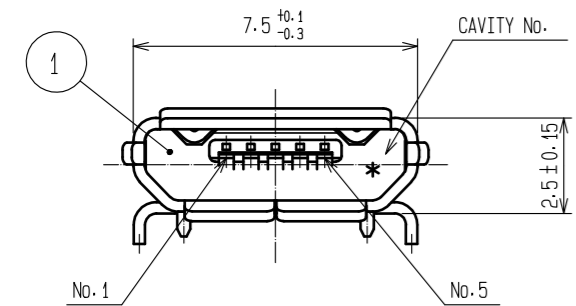
MATED WITH CORRESPONDING PLUG(4:1)



PICK & PLACE AREA



GENERAL TOLERANCE IS ±0.05mm



- NOTES.
- 1 CO-PLANARITY IS WITHIN 0.08mm MAX.
  - 2 PLATING  
 CONTACT AREA :GOLD 0.75µm MIN.  
 LEAD AREA :GOLD 0.05µm MIN.  
 UNDER PLATING:NICKEL 2µm MIN.
  - 3 PER REEL : 2000 pcs.
  4. INTERFACE DIMENSIONS TO USB2.0 SPECIFICATION.
  5. AS FOR PART No.3, THE PERFORMANCE REMAINS GOOD EVEN IF THERE IS A RUBBING WOUND BY THE ASSEMBLY PROCESS.
  6. AS FOR PART No.3, THERE IS NO PROBLEM ON THE QUALITY THOUGH THERE MIGHT BE A DIFFERENCE IN THE COLOR DEPENDING ON THE PLATING PROCESSING LOT.

2	COPPER ALLOY		5	PE	
1	LCP	BLACK UL94V-0	4	PS	
			3	STAINLESS STEEL	TIN PLATING 1µm MIN. LUBRICANT
NO.	MATERIAL	FINISH . REMARKS	NO.	MATERIAL	FINISH . REMARKS
UNITS	mm	SCALE	5 : 1	COUNT	DESCRIPTION OF REVISIONS
					DESIGNED
					CHECKED
					DATE
APPROVED : NM. NISHIMATSU		15.10.27	DRAWING NO. EDC-126367-30-00		
CHECKED : KN. ICHIKAWA		15.10.27	PART NO. ZX62D-B-5P8(30)		
DESIGNED : TS. ITO		15.10.27	CODE NO. CL242-0034-0-30		
DRAWN : AK. AKIYAMA		15.10.27			