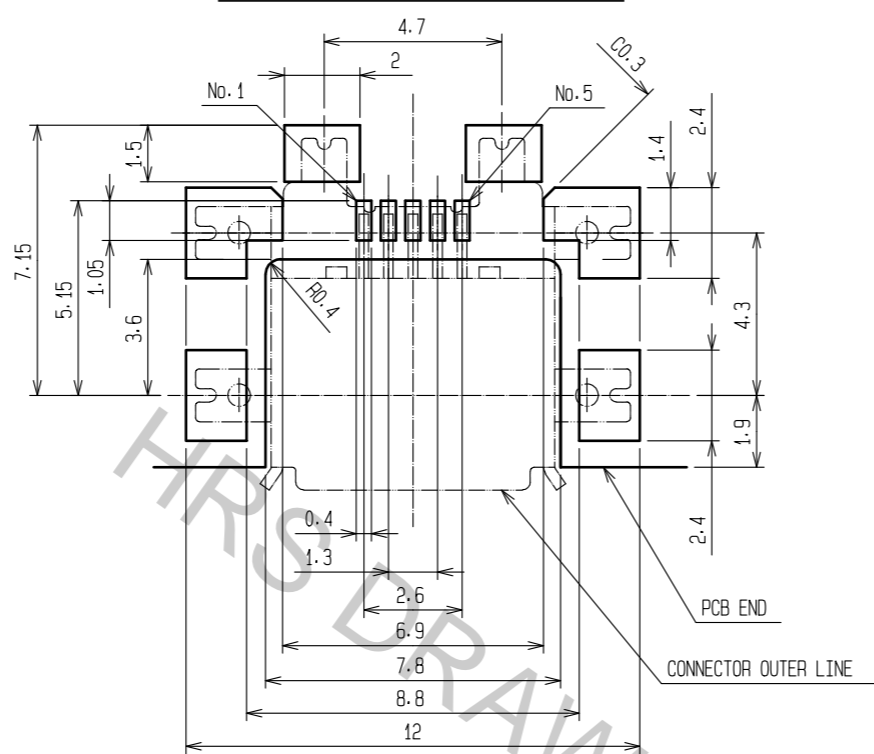
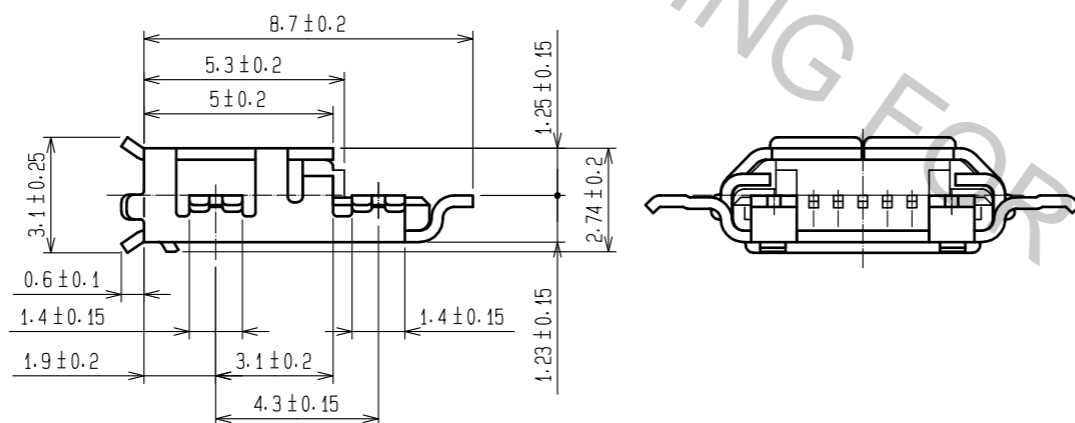
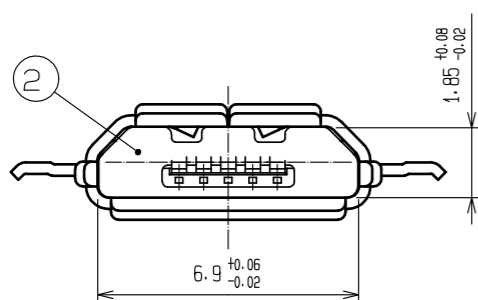
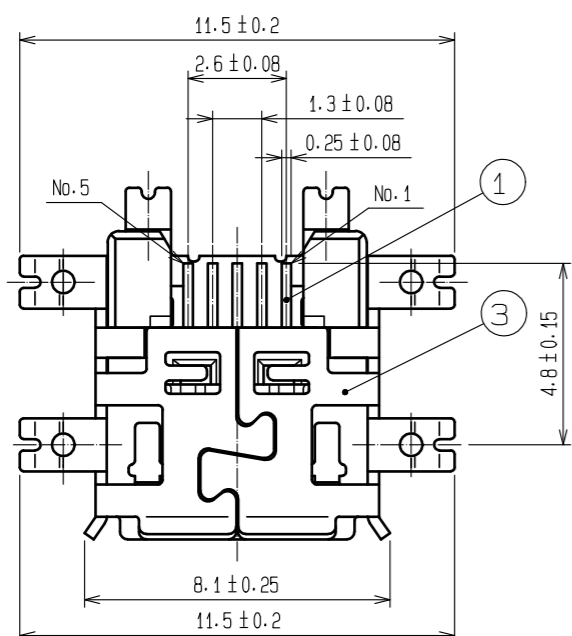
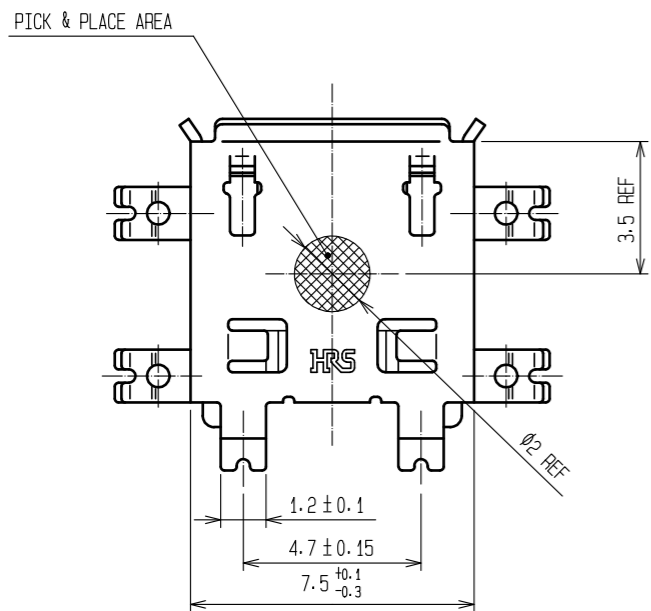
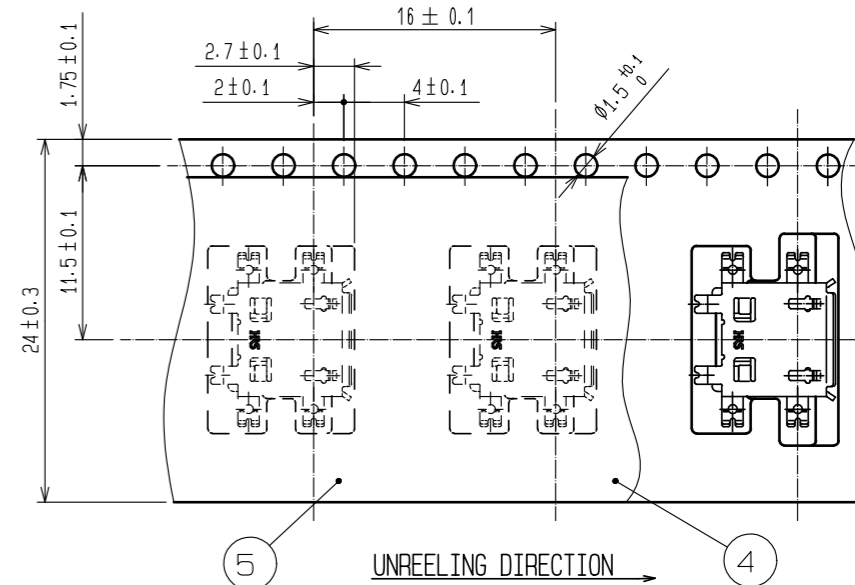


Oct.1.2018 Copyright 2018 HIROSE ELECTRIC CO., LTD. All Rights Reserved.
 In case that the application demands a high level of reliability, such as automotive,
 please contact a company representative for further information.

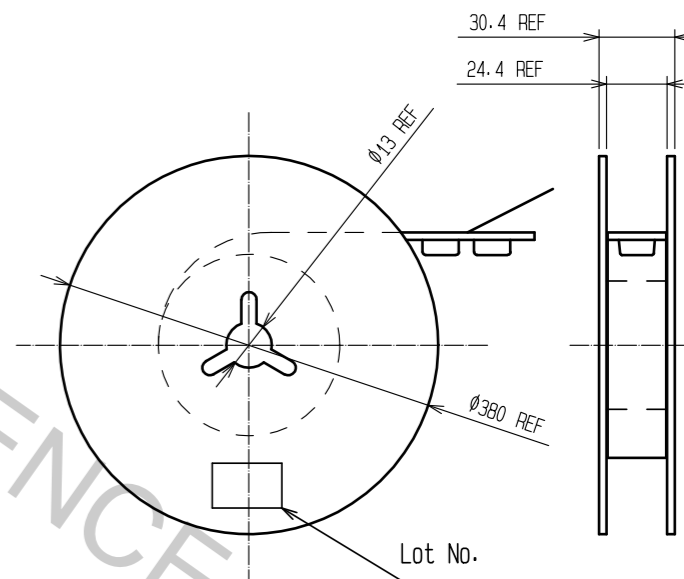
RECOMMENDED PATTERN



4 DRAWING FOR PACKING(FREE)



- NOTES 1 INTERFACE DIMENSIONS CONFORMS TO MICRO-B RECEPTACLE OF USB STANDARDS.
 2 CO-PLANARITY TO BE 0.08 MAX.
 3 PLATING
 CONTACT AREA : GOLD 0.05µm MIN.
 OVER PALLADIUM NICKEL 0.75µm MIN.
 LEAD AREA : GOLD 0.05µm MIN.
 UNDER PLATING: NICKEL 2µm MIN.
 4 PER REEL: 1500 pcs
 5 AS FOR PART No.3, THE PERFORMANCE REMAINS GOOD EVEN IF THERE IS A RUBBING WOUND BY THE ASSEMBLY PROCESS, AND THE PERFORMANCE REMAINS GOOD EVEN IF THERE IS A DIFFERENCE OF THE COLOR OF PLATING WITH THE MANUFACTURING LOT.



| | | | | | |
|------------------------------------|--------------|---------------------|------------------------------|-----------------|----------------------------------|
| 2 | LCP | COLOR BLACK UL94V-0 | 5 | PE | |
| 1 | COPPER ALLOY | 3 | 4 | PS | |
| | | | 3 | STAINLESS STEEL | TIN PLATING 3.8µm min. LUBRICANT |
| NO. | MATERIAL | FINISH . REMARKS | NO. | MATERIAL | FINISH . REMARKS |
| UNITS | mm | SCALE | 5 : 1 | COUNT | DESCRIPTION OF REVISIONS |
| | | | | | DESIGNED |
| | | | | | CHECKED |
| | | | | | DATE |
| APPROVED : NM. NISHIMATSU 15.10.27 | | | DRAWING NO. EDC-126186-30-00 | | |
| CHECKED : KN. ICHIKAWA 15.10.27 | | | PART NO. ZX62M-B-5P(30) | | |
| DESIGNED : TS. ITO 15.10.27 | | | CODE NO. CL242-0024-7-30 | | |
| DRAWN : AK. AKIYAMA 15.10.27 | | | 1/1 | | |