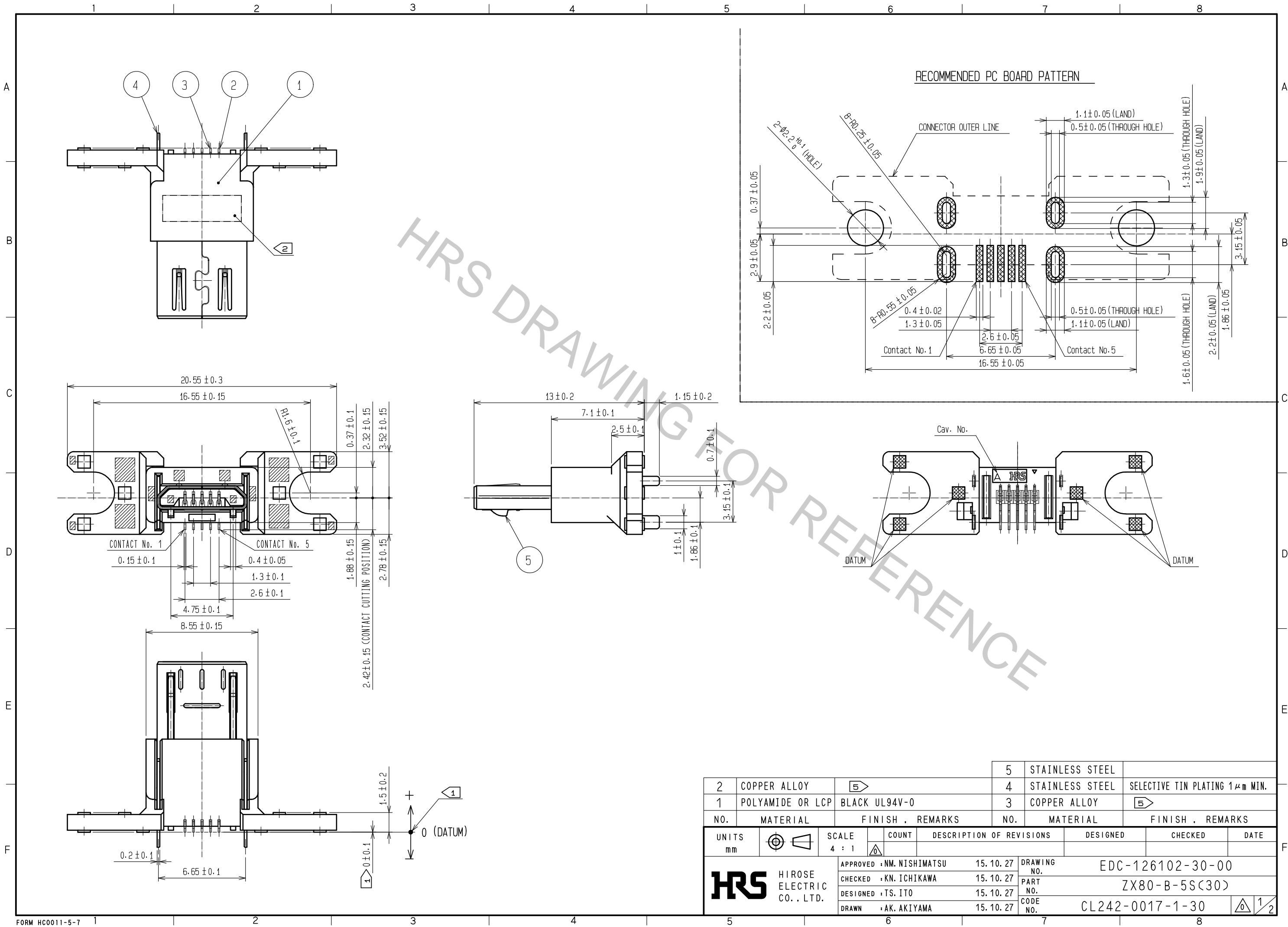
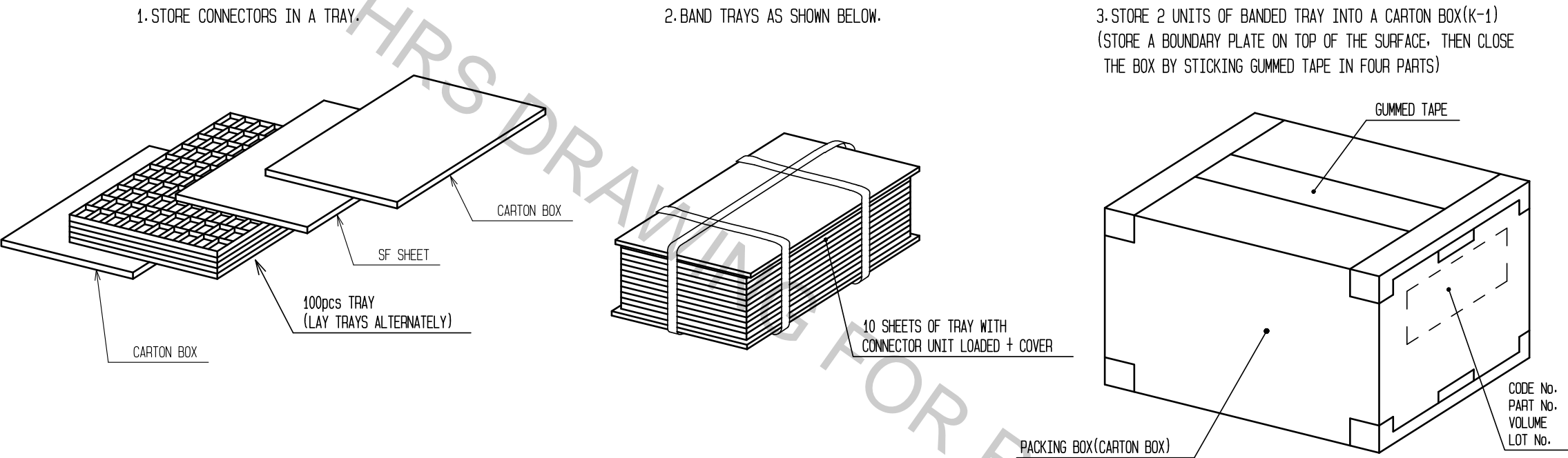


Oct.1.2018 Copyright 2018 HIROSE ELECTRIC CO., LTD. All Rights Reserved.
In case that the application demands a high level of reliability, such as automotive,
please contact a company representative for further information.

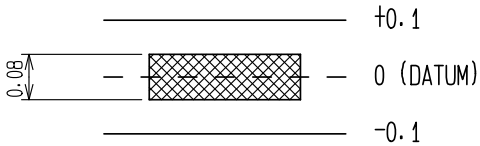


			5		STAINLESS STEEL													
2	COPPER ALLOY				4		STAINLESS STEEL		SELECTIVE TIN PLATING 1μm MIN.									
1	POLYAMIDE OR LCP		BLACK UL94V-0		3		COPPER ALLOY											
NO.		MATERIAL		FINISH . REMARKS			NO.		MATERIAL		FINISH . REMARKS							
UNITS mm				SCALE 4 : 1				COUNT		DESCRIPTION OF REVISIONS			DESIGNED		CHECKED		DATE	
HIROSE ELECTRIC CO., LTD.				APPROVED		NM. NISHIMATSU		15.10.27		DRAWING NO.		EDC-126102-30-00						
				CHECKED		KN. ICHIKAWA		15.10.27		PART NO.		ZX80-B-5S<30>						
				DESIGNED		TS. ITO		15.10.27		CODE NO.		CL242-0017-1-30						
				DRAWN		AK. AKIYAMA		15.10.27				1		2				

3 FIG-2 DRAWING FOR PACKING(AT 2000 pcs PACKING.)
THIS IS ONE EXAMPLE OF PACKING METHOD, AND IT MAY CHANGE WITHOUT
ANY NOTICE, DEPENDING ON VOLUME.



NOTES. 1 DIMENSIONS OF SMT RANGE AND CO-PLANARITY ARE AS SHOWN BELOW.



- 2 LOT No. SHALL BE INDICATED AT THE POSITION AS SHOWN.
- 3 THIS PRODUCT IS TRAY PACKING, AND 100 CONNECTORS FOR EACH TRAY.
MINIMUM ORDER QUANTITY WILL BE 100 pcs PER UNIT.
4. THE SHADED AREAS SHOW LOCATIONS OF EJECTOR PINS.
- 5 PLATING
CONTACT AREA : GOLD 0.75μm MIN.
READ AREA : GOLD 0.03μm MIN.
UNDER PLATING: NICKEL 2μm MIN.

HRS

DRAWING NO.	EDC-126102-30-00
PART NO.	ZX80-B-5S(30)
CODE NO.	CL242-0017-1-30