

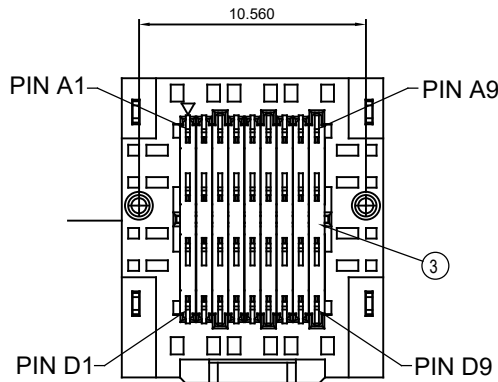
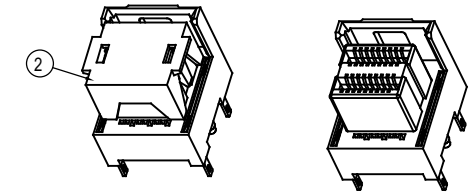
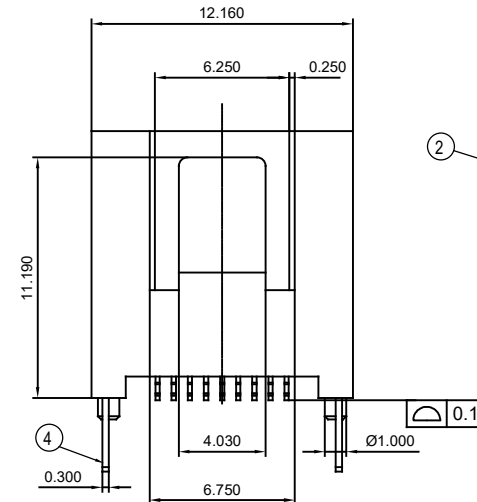
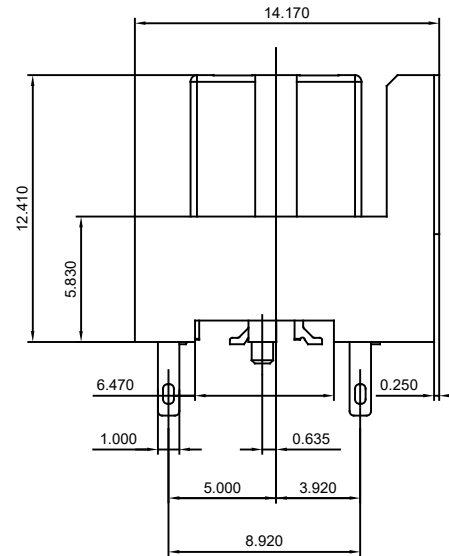
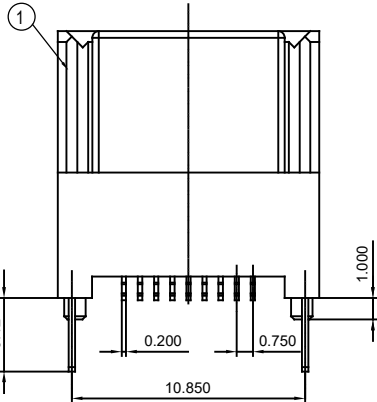
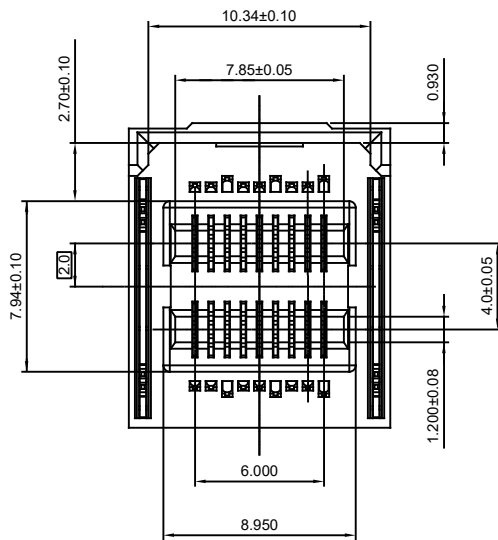


THIS IS A C.A.D. GENERATED DRAWING
DO NOT MAKE MANUAL REVISIONS TO MASTER.

TOLERANCE UNLESS OTHERWISE SPECIFIED	
.X	±0.35
.XX	±0.25
.XXX	±0.15

NOTES:

MATERIAL: L.C.P GLASS REINFORCED, UL-94V-0
 HOUSING: L.C.P GLASS REINFORCED, UL-94V-0, COLOR: BLACK
 CAP: L.C.P GLASS REINFORCED, UL-94V-0, COLOR: BLACK
 INSERT MOLDING: L.C.P GLASS REINFORCED, UL-94V-0
 LATCH: STAINLESS STEEL, TIN (MATTE) 100~200µ
 CONTACT: COPPER ALLOY
 30 µ" GOLD PLATING ON CONTACT AREA
 MATTE TIN PLATING ON SOLDER TAIL OVER
 NICKEL UNDER PLATING



4	LATCH	2	STAINLESS STEEL	TIN(MATTE)100~200 µ"
3	CONTACT	36	COPPER ALLOY	SEE NOTES
3	INSERT MOLDING	9	L.C.P GLASS REINFORCED, UL94 V-0	SEE NOTES
2	CAP	1	L.C.P GLASS REINFORCED, UL94 V-0	BLACK
1	HOUSING	1	L.C.P GLASS REINFORCED, UL94 V-0	SEE NOTES
NO.	DESCRIPTION	QTY.	MATERIAL	FINISH/COLOR

MINI SAS HD EXTERNAL, VERTICAL SMT,
FEMALE, 36 CONTACTS

ACAD REFERENCE NO.: 901-036-629-002

DRAWN: W.T DATE: JUNE.28 /2018

CHECKED: DATE:

SCALE: N.T.S SHEET 1 OF 1

DRAWING NUMBER: 901-036-629-002

ISSUE

PART NUMBER: 901-036-629-002

1



THIS SERIES FULLY CONFORMS TO
THE EUROPEAN UNION DIRECTIVES
2011/65/EU FOR RoHS COMPLIANCY.



EDAC INC
TORONTO, ONTARIO
CANADA
YOUR CONNECTION TO QUALITY & SERVICE

THESE DRAWINGS AND SPECIFICATIONS
ARE THE PROPERTY OF EDAC INC., AND
SHALL NOT BE REPRODUCED, OR COPIED
OR USED AS THE BASIS FOR THE
MANUFACTURE OR SALE OF APPARATUS
WITHOUT WRITTEN PERMISSION.