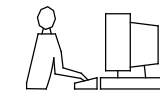


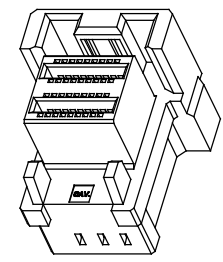
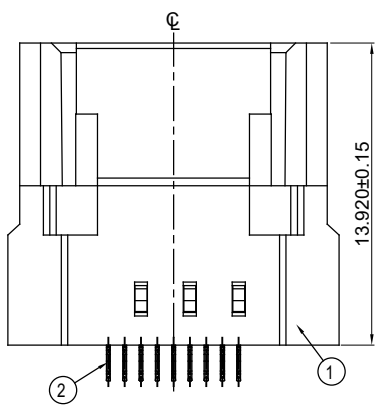
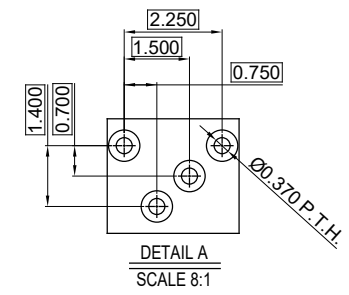
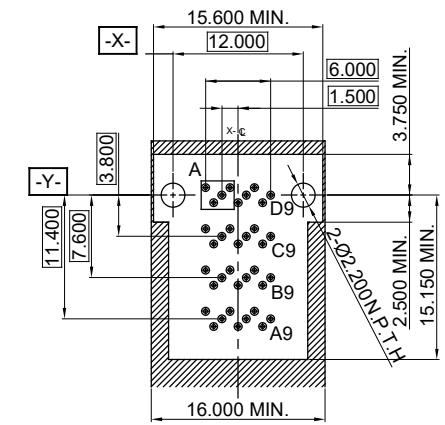
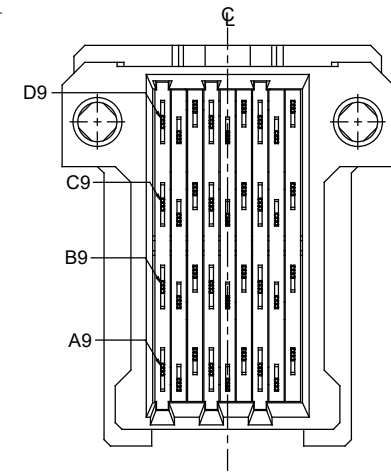
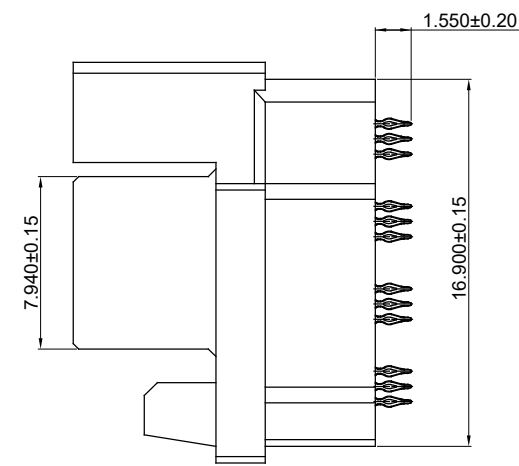
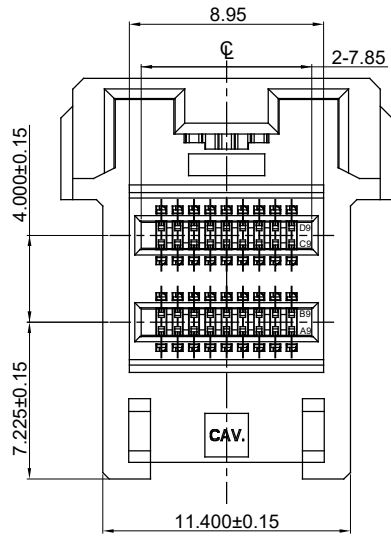
TOLERANCE UNLESS OTHERWISE SPECIFIED	
.X	±0.25
.XX	±0.15
.XXX	±0.10

THIS IS A C.A.D. GENERATED DRAWING
DO NOT MAKE MANUAL REVISIONS TO MASTER.



NOTES:

MATERIAL: L.C.P GLASS REINFORCED, UL-94V-0
 HOUSING: L.C.P GLASS REINFORCED, UL-94V-0
 INSERT MOLDING: L.C.P GLASS REINFORCED, UL-94V-0
 CONTACT: COPPER ALLOY
 30 μ" GOLD PLATING ON CONTACT AREA &
 MATTE TIN PLATING 20~120μ" ON SOLDER
 TAIL OVER NICKEL 50~150μ" UNDER PLATING



NO.	DESCRIPTION	QTY.	MATERIAL	FINISH/COLOR
2	CONTACT	36	COPPER ALLOY	SEE NOTES
1	INSULATOR	1	L.C.P SERIES, UL94 V-0	BLACK

MINI SAS HD EXTERNAL, VERTICAL PRESS FIT,
31 CONTACTS, FEMALE

ACAD REFERENCE NO.: 903-036-231-002	
DRAWN: W.T	DATE: JULY.03 /2018
CHECKED:	DATE:
SCALE: N.T.S	SHEET 1 OF 1
DRAWING NUMBER: 903-036-231-002	ISSUE
PART NUMBER: 903-036-231-002	1



THIS SERIES FULLY CONFORMS TO THE EUROPEAN UNION DIRECTIVES 2011/65/EU FOR RoHS COMPLIANCY.



THESE DRAWINGS AND SPECIFICATIONS ARE THE PROPERTY OF EDAC INC., AND SHALL NOT BE REPRODUCED, OR COPIED OR USED AS THE BASIS FOR THE MANUFACTURE OR SALE OF APPARATUS WITHOUT WRITTEN PERMISSION.