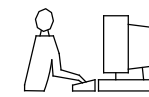


TOLERANCES UNLESS OTHERWISE SPECIFIED

.X	±0.25
.XX	±0.15
.XXX	±0.10

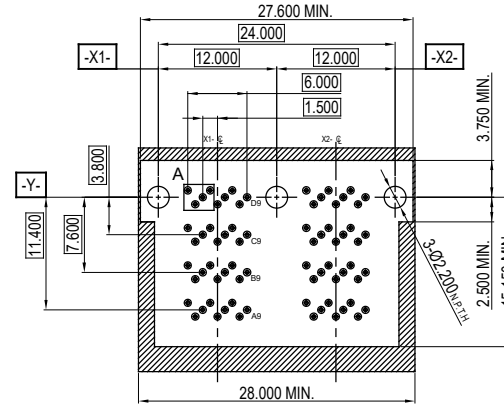
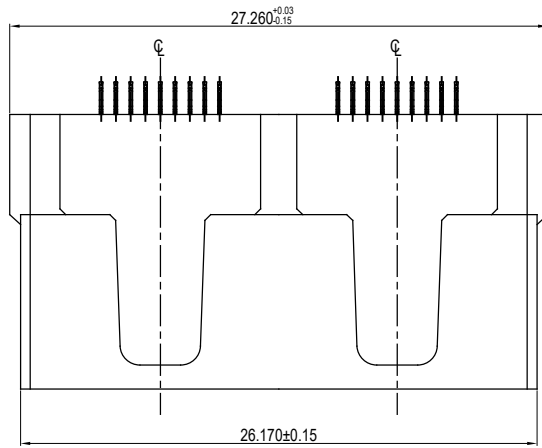
THIS IS A C.A.D. GENERATED DRAWING
DO NOT MAKE MANUAL REVISIONS TO MASTER.



ISSUE NUMBER

ORIGINAL

①

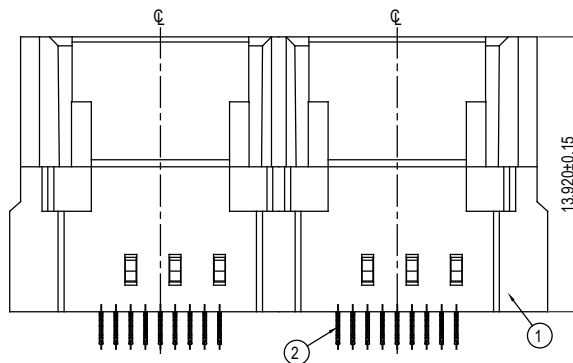
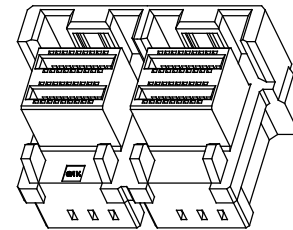
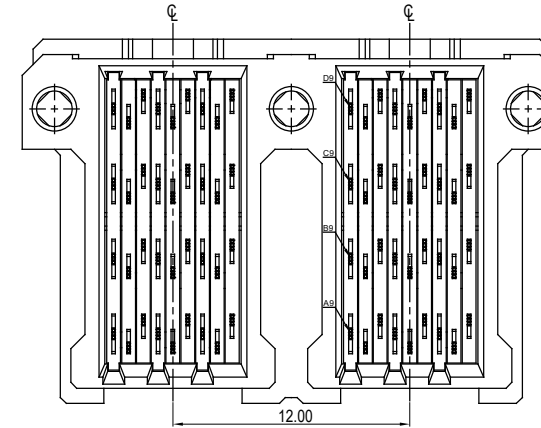
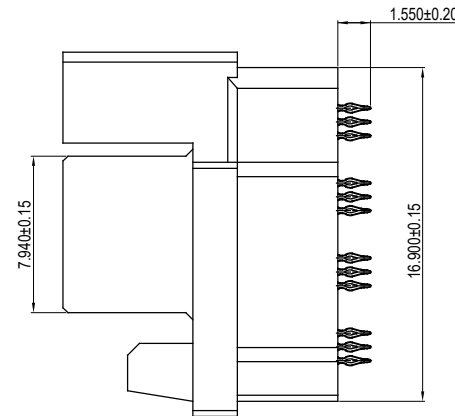
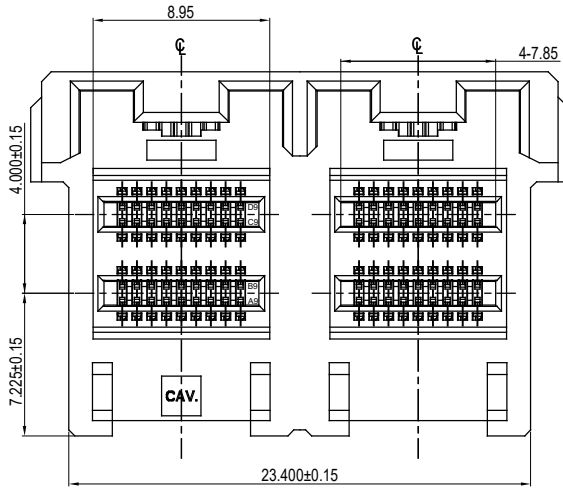
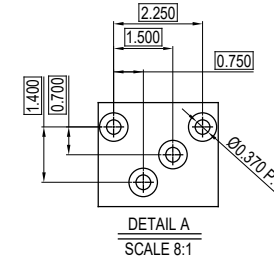


RECOMMENDED PCB LAYOUT

NOTES:

MATERIAL:
HOUSING:
CONTACT:

L.C.P 30%GF, UL-94V-0, COLOR: BLACK
COPPER ALLOY
30 μ" GOLD PLATING ON CONTACT AREA
MATTE TIN PLATING 20~120μ" ON SOLDER TAIL OVER
NICKEL 50~150μ" UNDER PLATING.



2	CONTACT	144	COPPER ALLOY	SEE NOTES
1	INSULATOR	1	L.C.P SERIES, UL94 V-0	-
NO.	DESCRIPTION	QTY.	MATERIAL	FINISH/COLOR

MINI SAS HD EXTERNAL, VERTICAL PRESS FIT,
144 CONTACTS, FEMALE



THIS SERIES FULLY CONFORMS TO
THE EUROPEAN UNION DIRECTIVES
2011/65/EU FOR RoHS COMPLIANCE.



YOUR CONNECTION TO QUALITY & SERVICE

EDAC INC
TORONTO, ONTARIO
CANADA

THESE DRAWINGS AND SPECIFICATIONS
ARE THE PROPERTY OF EDAC INC., AND
SHALL NOT BE REPRODUCED, OR COPIED
OR USED AS THE BASIS FOR THE
MANUFACTURE OR SALE OF APPARATUS
WITHOUT WRITTEN PERMISSION.

ACAD REFERENCE NO.: 903-144-231-002

DRAWN: W.T DATE: JULY.03 /2018

CHECKED: DATE:

SCALE: N.T.S SHEET 1 OF 1

DRAWING NUMBER: 903-144-231-002

ISSUE

PART NUMBER: 903-144-231-002

1