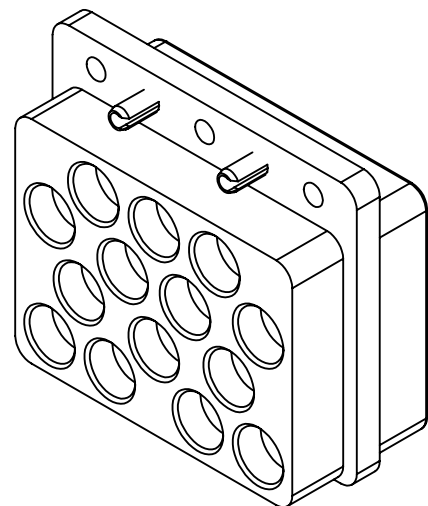
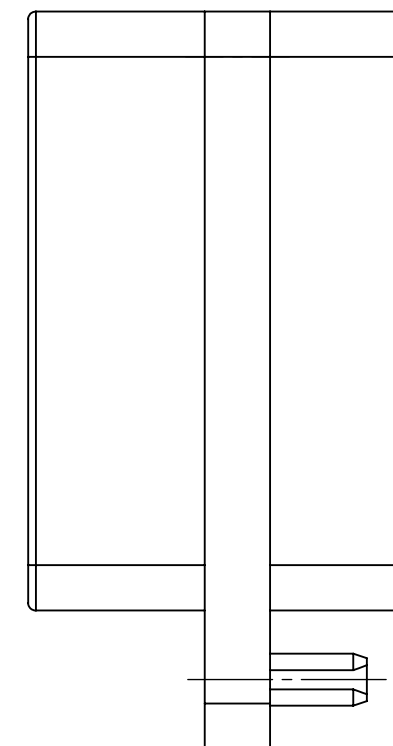
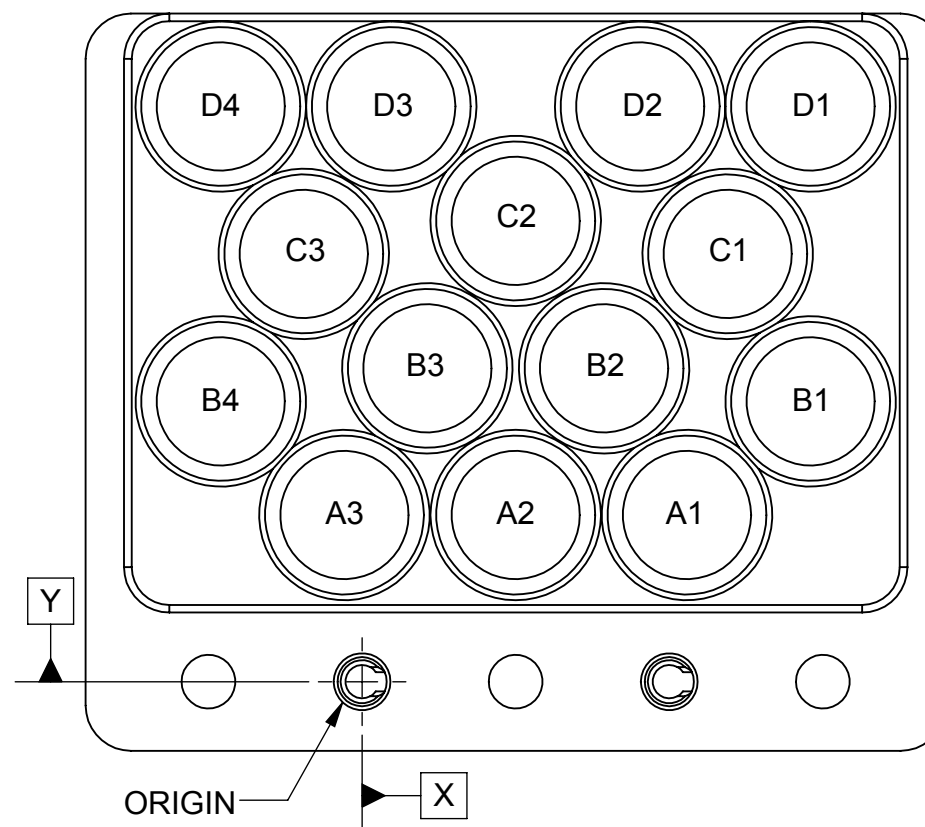


# CUI BASIC PRODUCT DATA DRAWING

REVISION HISTORY			
REV	DESCRIPTION	DATE	APPROVED
-	NRN 42359	06/18	DAL
A	DCN 47627	06/18	JDT



HOLE CHART		
HOLE No.	X	Y
ORIGIN	0.000	0.000
A1	0.423	0.217
A2	0.200	0.217
A3	-0.023	0.217
B1	0.584	0.365
B2	0.315	0.408
B3	0.085	0.408
B4	-0.184	0.365
C1	0.476	0.557
C2	0.200	0.600
C3	-0.076	0.557
D1	0.584	0.749
D2	0.362	0.749
D3	0.038	0.749
D4	-0.184	0.749



**MATERIAL:**

**BODY:** STAINLESS STEEL PER AMS-5640, ALLOY UNS S30300, TYPE 1; OR ASTM A582 TYPE 303, COND. A

**ALIGNMENT PINS:** STAINLESS STEEL PER ASTM A313, ALLOY UNS S30200, TYPE 302

**FINISH:**

**BODY & ALIGNMENT PINS:** PASSIVATED PER AMS-2700

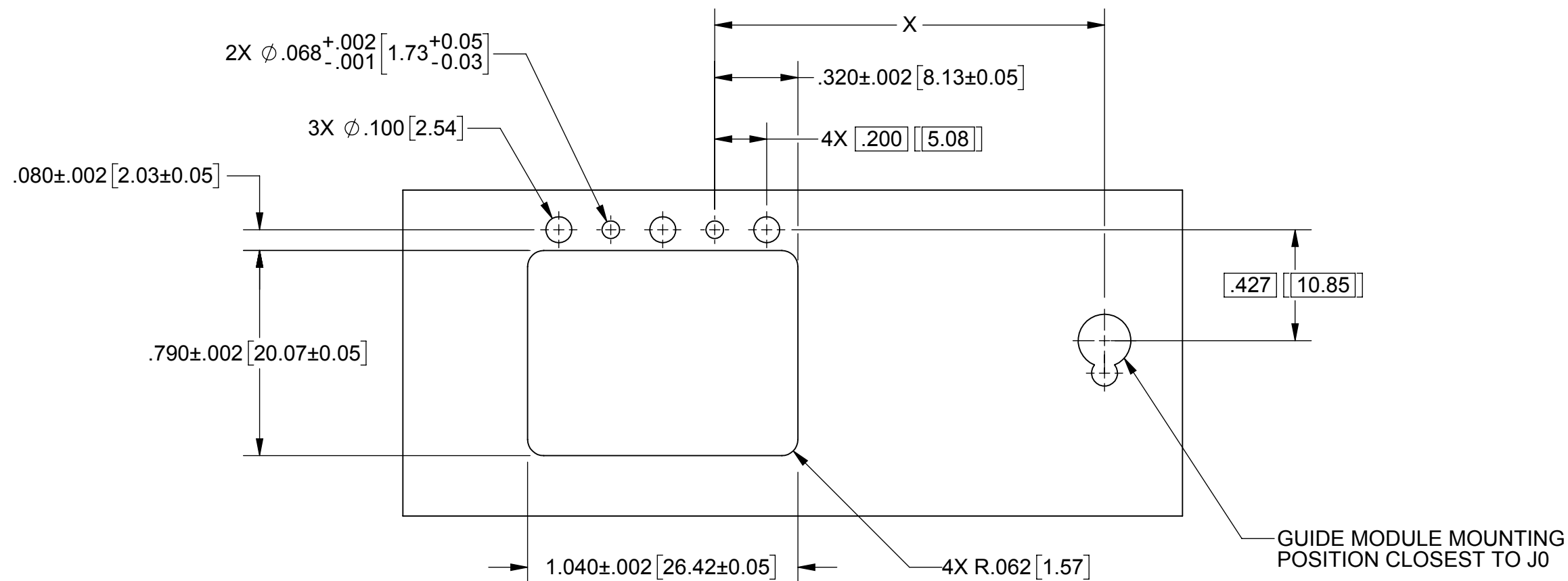
**NOTES:**

1. USES 3221-40066 CONTACT OR SIMILAR.
2. MATES TO SF9301-60042 OR SF9311-60147 PLUG-IN MODULE.

MATERIAL:	SEE NOTES	DIMENSIONS ARE IN INCHES TOLERANCES:	UNLESS OTHERWISE SPECIFIED	Amphenol 2400 Centrepark West Drive, Suite 100 West Palm Beach, FL 33409
FINISH:	SEE NOTES	FRACTIONAL: $\pm 1/64$ ANGULAR: X° $\pm 1^{\circ}0'$ X'X' $\pm 15'$	1) ALL DIMENSIONS ARE IN INCHES (MILLIMETERS) 2) ALL DIMENSIONS ARE AFTER PLATING. 3) BREAK CORNERS & EDGES .005 R. MAX. 4) CHAM. 1ST & LAST THREADS. 5) SURFACE ROUGHNESS 63 MIL-STD-10.	TITLE:
SURFACE AREA:	N/A	DECIMAL: X $\pm .030$ .XX $\pm .010$ .XXX $\pm .005$	6) DIA.'S ON COMMON CENTERS TO BE CONCENTRIC WITHIN .005 T.I.R. 7) REMOVE ALL BURRS	VITA 67.3 BACKPLANE MODULE C 14 PORT, SMPM
<b>PROPRIETARY</b>		INTERPRET DIMENSIONS AND TOLERANCES PER ASME Y14.5M - 1994	THIRD ANGLE PROJECTION	SIZE   CAGE CODE   DWG. NO.
THE INFORMATION CONTAINED IN THIS DRAWING IS THE SOLE PROPERTY OF SV MICROWAVE, INC. ANY REPRODUCTION IN PART OR AS A WHOLE WITHOUT THE WRITTEN PERMISSION OF SV MICROWAVE, INC IS PROHIBITED.			DRAWN: JDT 04/05/18	B   95077   SF9321-60086
			CHECKED: DAL 04/05/18	SCALE: 4:1
			APPROVED: DAL 04/05/18	SHEET 1 OF 2

# CUI BASIC PRODUCT DATA DRAWING

REVISION HISTORY			
REV	DESCRIPTION	DATE	APPROVED
	SEE SHEET 1		



**RECOMMENDED PCB CUTOUT**

CONNECTOR LOCATION ON BACKPLANE PCB	
POSITION	DIM 'X'
J2	2.385" [60.58]
J3	3.942" [100.13]
J4	5.276" [134.00]
J5	6.409" [162.80]
J6	7.557" [191.95]

MATERIAL:	SEE NOTES	DIMENSIONS ARE IN INCHES TOLERANCES:	UNLESS OTHERWISE SPECIFIED	 Amphenol 2400 Centrepark West Drive, Suite 100 West Palm Beach, FL 33409
FINISH:	SEE NOTES	FRACTIONAL: $\pm 1/64$ ANGULAR: X° $\pm 1^{\circ}0'$ X'X' $\pm 15'$	1) ALL DIMENSIONS ARE IN INCHES (MILLIMETERS) 2) ALL DIMENSIONS ARE AFTER PLATING. 3) BREAK CORNERS & EDGES .005 R. MAX. 4) CHAM. 1ST & LAST THREADS. 5) SURFACE ROUGHNESS 63 MIL-STD-10.	TITLE:
SURFACE AREA:	N/A	DECIMAL: X $\pm .030$ .XX $\pm .010$ .XXX $\pm .005$	6) DIA.'S ON COMMON CENTERS TO BE CONCENTRIC WITHIN .004 T.I.R. 7) REMOVE ALL BURRS	VITA 67.3 BACKPLANE MODULE C 14 PORT, SMPM
<b>PROPRIETARY</b>		INTERPRET DIMENSIONS AND TOLERANCES PER ASME Y14.5M - 1994	THIRD ANGLE PROJECTION	SIZE   CAGE CODE   DWG. NO.
THE INFORMATION CONTAINED IN THIS DRAWING IS THE SOLE PROPERTY OF SV MICROWAVE, INC. ANY REPRODUCTION IN PART OR AS A WHOLE WITHOUT THE WRITTEN PERMISSION OF SV MICROWAVE, INC IS PROHIBITED.			DRAWN: JDT 04/05/18	B   95077   SF9321-60086
			CHECKED: DAL 04/05/18	SCALE: 4:1
			APPROVED: DAL 04/05/18	SHEET 2 OF 2