

ITEM	MOLEX P/N	DESCRIPTION	QTY	UOM
A,B	2004530006	MINIFIT TPA 2.0 SR RECEPT HSG V-0 6CKT	2	PC
C	1727090006	MINIFIT TPA 2.0 RECPT TPA V-0 6CKT	2	PC
D	1727181111	MINIFIT TPA 2.0 CRP TERM PHBR 16AWG S CN	12	PC
E	-	LABEL	1	PC

FROM	TO	CABLE DESCRIPTION	COLOR
A1	B6	16 AWG UL1061 BLACK DISCRETE WIRE	BLACK
A2	B5		
A3	B4		
A4	B3		
A5	B2		
A6	B1		

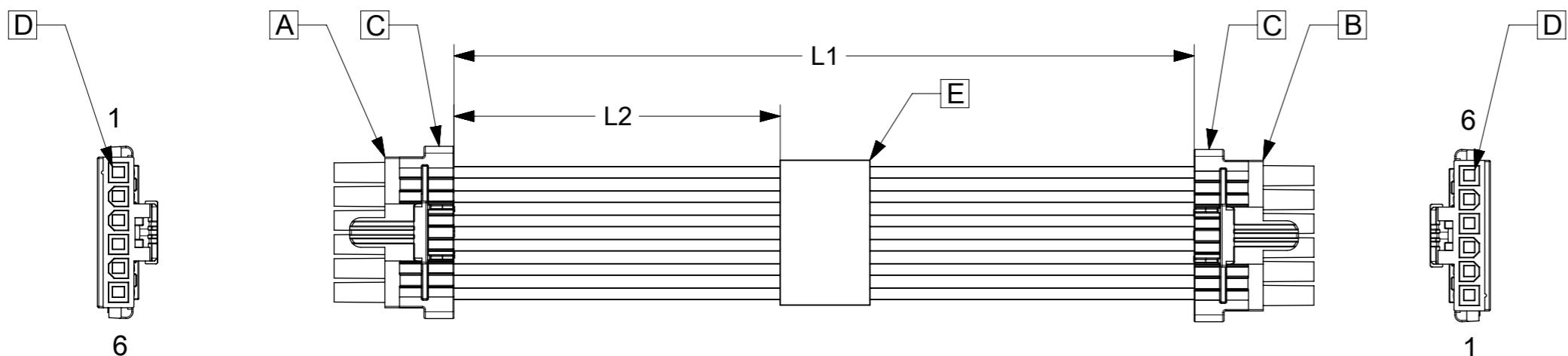


TABLE			
PART NUMBER	L1	L2	TITLE
1451350600	75±5	25REF	Mini-Fit 6 Circuit 75MM
1451350601	150±10	70REF	Mini-Fit 6 Circuit 150MM
1451350603	300±15	145REF	Mini-Fit 6 Circuit 300MM
1451350610	1000±20	495REF	Mini-Fit 6 Circuit 1M

- NOTES**
- Cable assembly to be tested 100% for continuity and polarity.
  - Label text must be 2mm max. In height with Arial font.
  - Connector view shown is from mating side.

P/N:145135XXXX — MOLEX PN  
 MOLEX  
 BATCH WK/YR

DETAIL A

DATE	REV	DESCRIPTION	REVISED BY
2018.08.29	A	INITIAL RELEASE	SSHIVASHANKA

<b>SYMBOLS</b> ▽ = 0 ▽ = 0 ▽ = 0 ▽ = 0 ▽ = 0 ▽ = 0 ▽ = 0 ▽ = 0 ▽ = 0 ▽ = 0 ▽ = 0 ▽ = 0	THIS DRAWING CONTAINS INFORMATION THAT IS PROPRIETARY TO MOLEX ELECTRONIC TECHNOLOGIES, LLC AND SHOULD NOT BE USED WITHOUT WRITTEN PERMISSION DIMENSION UNITS: <b>mm</b> SCALE: <b>NTS</b> GENERAL TOLERANCES (UNLESS SPECIFIED) ANGULAR TOL: ± °	CURRENT REV DESC: EC NO: 605355 DRWN: SSHIVASHANKA 2018/09/14 CHK'D: MNARAYAN01 2018/10/03 APPR: MNARAYAN01 2018/10/03	
	DRWN: SSHIVASHANKA 2018/09/14 APPR: MNARAYAN01 2018/10/03	SEE TABLE	
	INITIAL REVISION: DRWN: SSHIVASHANKA 2018/09/14 APPR: MNARAYAN01 2018/10/03	PRODUCT CUSTOMER DRAWING DOCUMENT NUMBER: <b>4000095329</b> DOC TYPE: PSD DOC PART: 000 REVISION: A	
	DRAFT WHERE APPLICABLE MUST REMAIN WITHIN DIMENSIONS THIRD ANGLE PROJECTION DRAWING: A3-SIZE SERIES: 400009 MATERIAL NUMBER: SEE TABLE CUSTOMER: GENERAL MARKET SHEET NUMBER: 1 OF 1		