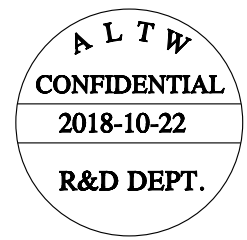
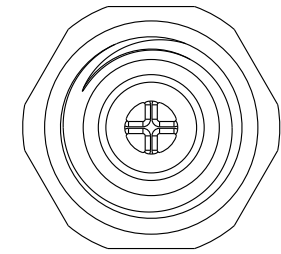
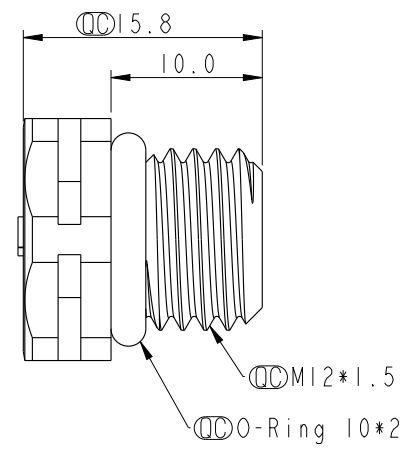
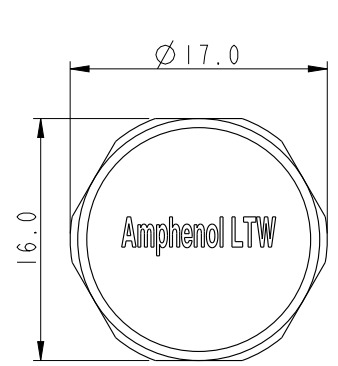
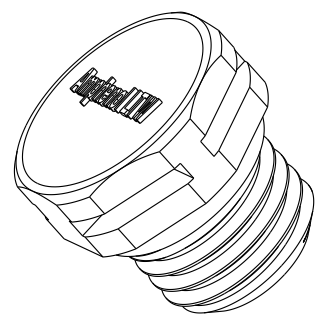


THIS DOCUMENT IS SUBJECT TO CHANGE WITHOUT NOTICE. IT IS CONFIDENTIAL AND A PROPERTY OF Amphenol LTW. DISCLOSURE TO THIRD PARTY HAS TO BE AUTHORIZED BY Amphenol LTW.

REV.	ECN NO.	DATE	SIGN	DESCRIPTION
A	Initial Release	2018/03/12	Ethan	
B	C180282	2018/10/22	Xiaofeng	Drawings Change



成品料號(Product no.)	透氣量l/min@70mbar	主體顏色(Body Colour)	O-Ring Color	疏油性(Oleophobic)	Waterproof Rate
VENT-PSINCR-N8001	>1000	Grey(Translucent)	Blue	N	IP68/IP69K
VENT-PSINCR-08001	>550	Grey(Translucent)	Black	Y	IP68/IP69K
VENT-PSINCR-08002	>1000	Grey(Translucent)	Green	Y	IP68/IP69K
VENT-PSINCR-N8002	>3000	Grey(Translucent)	Red	N	IP68/IP69K

UNIT : mm			TITLE M12*1.5 VENT		
TOLERANCE .X ±0.25 .XX ±0.1 .XXX ±0.05 ANGLES ±1°	SCALE 2:1	SIZE A4	SHEET 1 OF 2	REV. B	WC-REV. A.7
			☉: Inspection item		

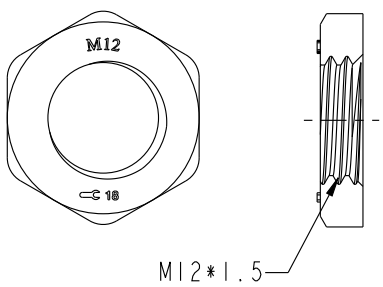
**Amphenol LTW**  
安費諾亮泰企業股份有限公司

ITEM NO.	DRAWN BY Xiaofeng	DATE 2018-10-22
DWG NO. VENT-PSINCR-XXXXX	CHECKED BY Feng-li	DATE 2018-10-22
CUSTOMER ALTW	APPROVED BY Jerry	DATE 2018-10-22

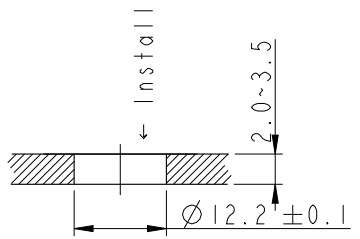
THIS DOCUMENT IS SUBJECT TO CHANGE WITHOUT NOTICE. IT IS CONFIDENTIAL AND A PROPERTY OF Amphenol LTW. DISCLOSURE TO THIRD PARTY HAS TO BE AUTHORIZED BY Amphenol LTW.

REV.	ECN NO.	DATE	SIGN	DESCRIPTION
A	Initial Release	2018/03/12	Ethan	
B	C180282	2018-10-22	Xiaofeng	Recommended Torque

Screw Nut: Optional part  
 No.: APTP-ABKPA012-001  
 螺母作為選配件

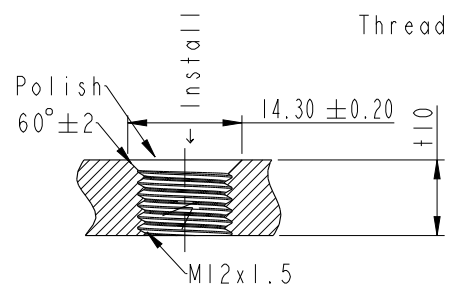


Through-hole

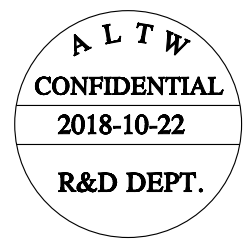
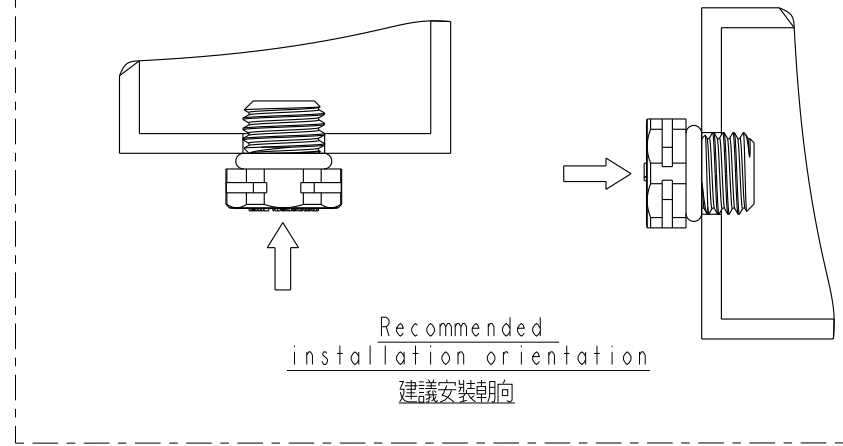


Recommended Panel Cut-Out  
 建議開孔尺寸

Threaded-hole



Recommended Panel Cut-Out  
 建議開孔尺寸



- Note:
- \*  $\varnothing$  Important Dimension.
  - \* Cap: PC+ABS, 94V-0, UV Resistance
  - \* Membrane: ePTFE
  - \* Body: PC+ABS, 94V-0, UV Resistance
  - \* O-Ring: Silicone, 94V-0
  - \* Recommended Torque: 6.0~8.0 Kgf.cm

UNIT: mm		
TOLERANCE	.X $\pm 0.25$	
	.XX $\pm 0.1$	
	.XXX $\pm 0.05$	
ANGLES	$\pm 1^\circ$	

TITLE M12*1.5 VENT			
SCALE 2:1	SIZE A4	SHEET 2 OF 2	
REV. B	WC-REV. A.7	$\varnothing$ : Inspection item	

**Amphenol LTW**  
 安費諾亮泰企業股份有限公司

ITEM NO.	DRAWN BY Xiaofeng	DATE 2018-10-22
DWG NO. VENT-PSINCR-XXXXX	CHECKED BY Feng-li	DATE 2018-10-22
CUSTOMER ALTW	APPROVED BY Jerry	DATE 2018-10-22