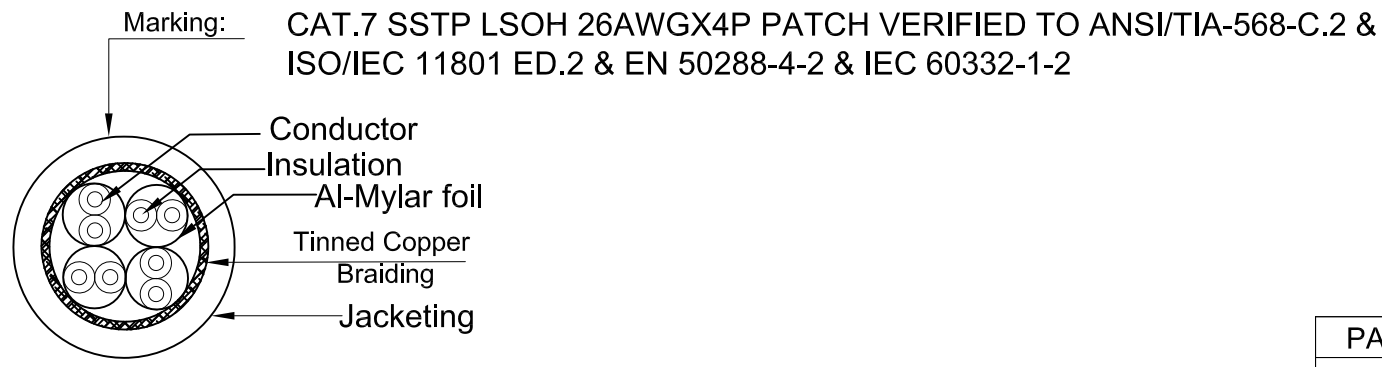
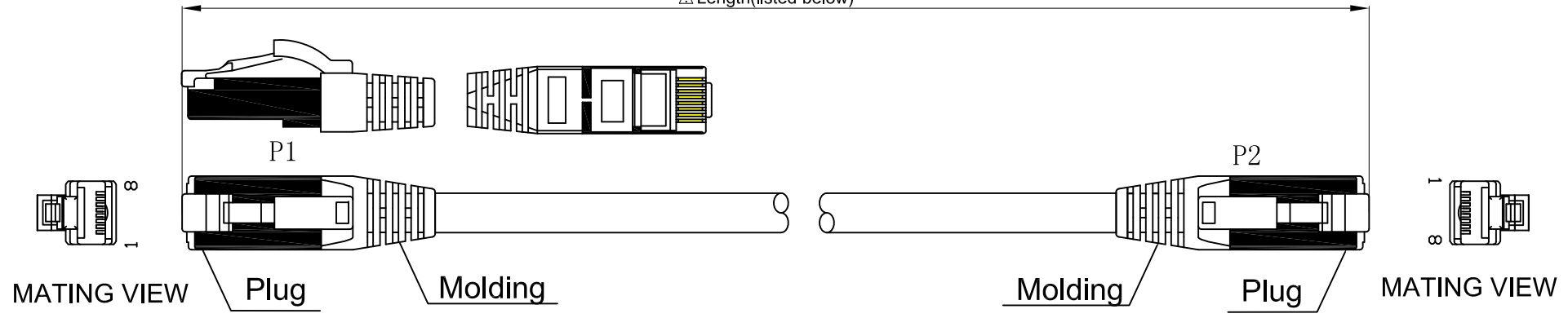


△ Length(listed below)



orange 2	green 3
white/orange	white/green
blue 1	brown 4
white/blue	white/brown

PINOUT			
PA/R	P1(T568B)	WIRE	P2(T568B)
2	1	WHT/ORG	1
	2	ORG	2
3	3	WHT/GRN	3
	6	GRN	6
1	4	BLU	4
	5	WHT/BLU	5
4	7	WHT/BRN	7
	8	BRN	8

Conductor		Bare Copper 26AWG
Insulation		Thickness:MIN at any point:0.20mm MAX AVG:0.35mm Diameter:1.05±0.06mm
Jacket	LSOH	Thickness:MIN at any point:0.50mm MAX AVG:0.60mm Diameter:5.8±0.20mm
Braiding		Tinned Copper
cable		CAT.7 S/FTP 26AWGX4P
Plug		8P8C 50U"/500MHz
Color		Grey852

Item no Chart	
21.15.0854	0.5m
21.15.0851	1m
21.15.0852	2m
21.15.0853	3m
21.15.0855	5m

Note:  
minimum of the bending  
radius ≥ 25mm

Key Size	△	3RD	⊕
	Tolerance		
(mm)	Critical	Normal	General
0-15	±0.05	±0.10	±1.0
15-60	±0.10	±0.20	
60-150	±0.15	±0.35	±1.5
150-350	±0.20	±0.50	
350-1000	±0.40	±0.65	±2.0

**SECOMP**

21.15.0854, 21.15.0851, 21.15.0852, 21.15.0853, 21.15.0855

ROLINE S/FTP Cable(Cat.7),with RJ-45 connectors(500 MHz),LSOH

UNIT	mm	APPROVAL	CHECKER	DRAWER
PAGE	1/1			
Draw.No.				XHX