

DO NOT
SCALE FROM
THIS PRINT

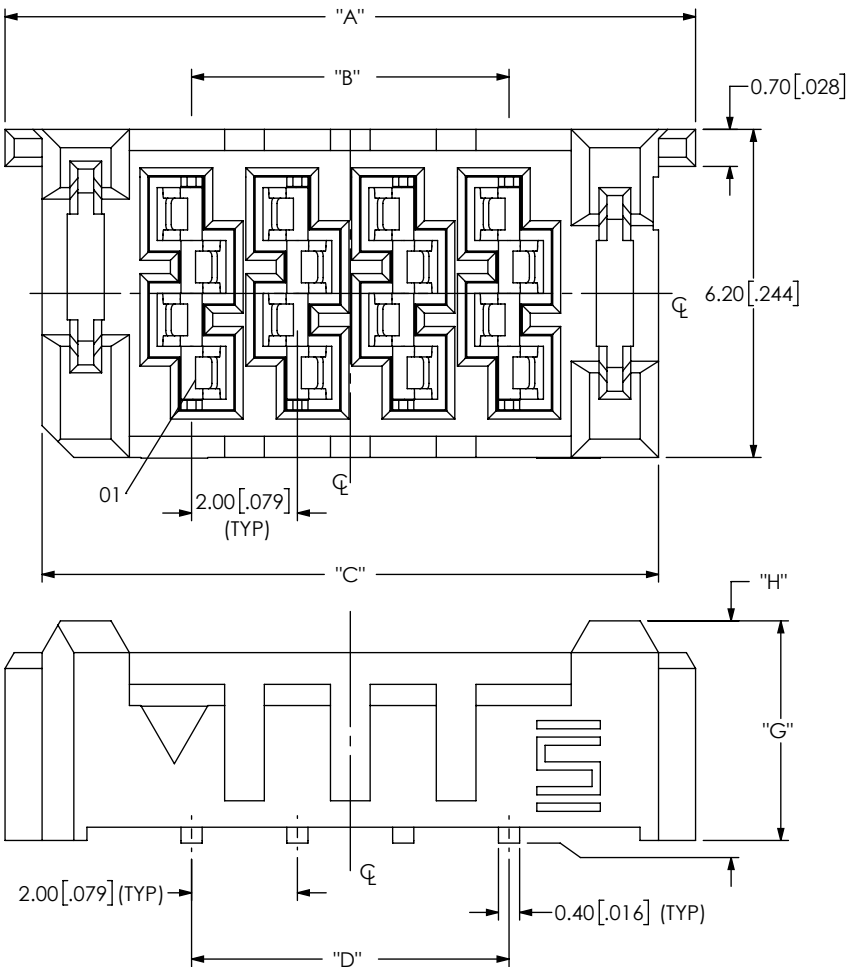


FIG 1
UMPS-04-03.5-X-VT-SM SHOWN

TABLE 2		
STACK HEIGHT		
UMPT LEAD STYLE	UMPS LEAD STYLE	
	-03.5	-05.5
-01.5	5.00 [0.197]	7.00 [0.276]
-06.5	10.00 [0.394]	12.00 [0.472]

TABLE 3			
LEAD STYLE	"G"	"H"	"J"
-03.5	4.15 [0.163]	4.20 [0.165]	3.68 [0.145]
-05.5	6.15 [0.242]	6.20 [0.244]	5.68 [0.224]

- NOTES:
- NOTE DELETED.
 - PARTS TO BE PACKAGED IN TAPE & REEL.
 - FOR QUANTITIES UP TO 49 PCS., NO LEADER, TRAILER OR REEL WILL BE SUPPLIED.
FOR QUANTITIES OF 50-124 PCS., NO LEADER OR TRAILER WILL BE SUPPLIED,
SPICES MAY BE PRESENT.
 - HOLES IN THE SURFACE MOUNT TAILS MAY OR MAY NOT BE PRESENT, AT SAMTEC DISCRETION.

UMPS-XX-XX.X-X-VT-XX-X-XX

NO. OF POSITIONS
-02, -03, -04, -05
*-06, *-07, *-08,
*-09, *-10

LEAD STYLE
-03.5: 3.5 mm
-05.5: 5.5 mm

PLATING
-T: MATTE TIN
*-L: 10μ" SELECTIVE GOLD IN CONTACT AREA, MATTE TIN ON TAIL
-G: 10μ" SELECTIVE GOLD IN CONTACT AREA, 3μ" GOLD ON TAIL

OPTIONS
(LEAVE BLANK FOR NO WELD TAB)
-WT: WELD TAB THROUGH HOLE
*-WS: WELD TAB SURFACE MOUNT
-K: POLYIMIDE PAD

MATING FORCE:
(LEAVE BLANK FOR NORMAL)
**-L: LOW FORCE

TAIL
-SM: SURFACE MOUNT
*-T1: THROUGH HOLE FOR 1.57 [.062]PCB
*-T2: THROUGH HOLE FOR 2.36 [.093]PCB

ORIENTATION
-VT: VERTICAL

* = NOT TOOLED
** = NOT RELEASED

DESIGNED & DIMENSIONED
IN MILLIMETERS[INCHES]

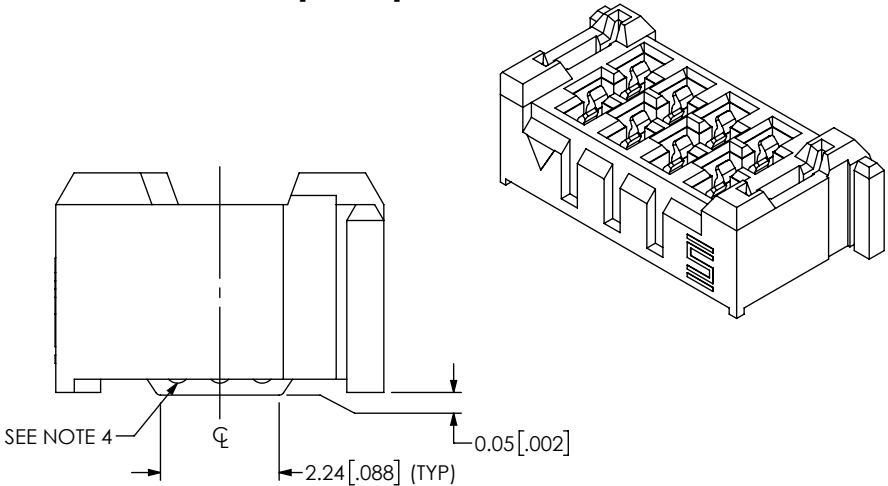


TABLE 1					
No OF POSITION	"A"	"B"	"C"	"D"	"E"
-02	9.05 [.356]	2.00 [.079]	7.65 [.301]	2.00 [.079]	6.00 [.236]
-03	11.05 [.435]	4.00 [.157]	9.65 [.380]	4.00 [.157]	8.00 [.315]
-04	13.05 [.514]	6.00 [.236]	11.65 [.459]	6.00 [.236]	10.00 [.394]
-05	15.05 [.593]	8.00 [.315]	13.65 [.537]	8.00 [.315]	12.00 [.472]

* PROPRIETARY NOTE *

THIS DOCUMENT CONTAINS CONFIDENTIAL AND PROPRIETARY INFORMATION AND ALL DESIGN, MANUFACTURING, REPRODUCTION, USE, PATENT RIGHTS AND SALES RIGHTS ARE EXPRESSLY RESERVED BY SAMTEC, INC. THIS DOCUMENT SHALL NOT BE DISCLOSED, IN WHOLE OR PART, TO ANY UNAUTHORIZED PERSON OR ENTITY NOR REPRODUCED, TRANSFERRED OR INCORPORATED IN ANY OTHER PROJECT IN ANY MANNER WITHOUT THE EXPRESS WRITTEN CONSENT OF SAMTEC, INC.

DO NOT SCALE DRAWING
SHEET SCALE: 2:1

MATERIAL:
INSULATOR: LCP
CONTACT: COPPER ALLOY
WELD TAB: COPPER ALLOY

DESCRIPTION:
ULTRA MICRO POWER SOCKET

DWG. NO.
UMPS-XX-XX.X-X-VT-XX-X-XX

BY: JOE Z 03/22/2017 SHEET 1 OF 3

520 PARK EAST BLVD, NEW ALBANY, IN 47150
PHONE: 812-944-6733 FAX: 812-948-5047
e-Mail: info@SAMTEC.com code 55322

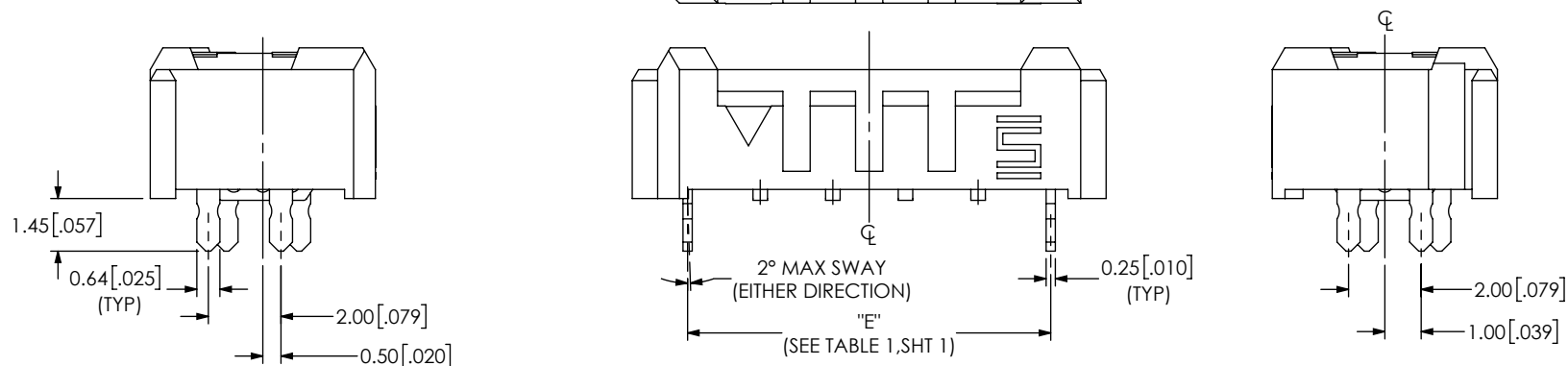


FIG 2
UMPS-04-03.5-X-VT-SM-WT SHOWN
(DIFFERENT AS SHOWN, OTHERWISE SAME AS FIG 1)

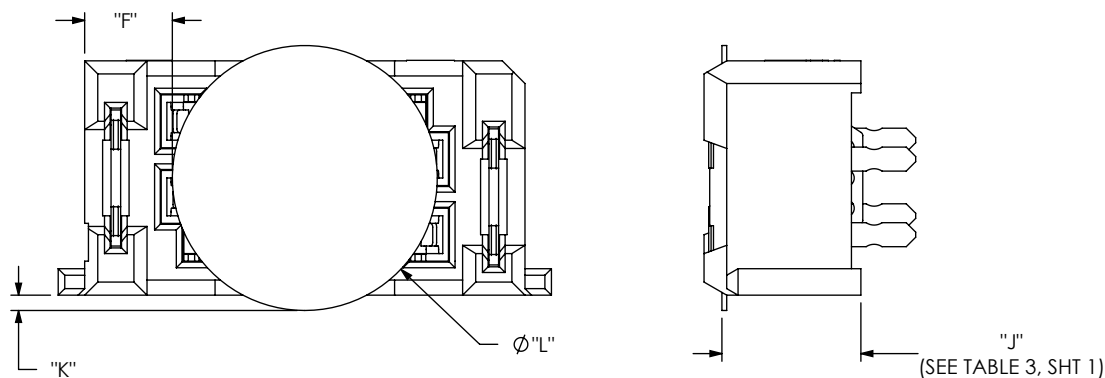


FIG 3
UMPS-04-03.5-X-VT-SM-WT-K SHOWN
(DIFFERENT AS SHOWN, OTHERWISE SAME AS FIG 2)

TABLE 4			
No OF POSITION	"F"	"K"	"L"
-02	1.58 [.062]	0.85 [.034]	4.50 [.177]
-03	1.57 [.062]	0.15 [.006]	6.50 [.256]
-04	2.32 [.091]	0.41 [.016]	7.01 [.276]
-05	3.32 [.131]	0.41 [.016]	7.01 [.276]

<p>* PROPRIETARY NOTE *</p> <p>THIS DOCUMENT CONTAINS CONFIDENTIAL AND PROPRIETARY INFORMATION AND ALL DESIGN, MANUFACTURING, REPRODUCTION, USE, PATENT RIGHTS AND SALES RIGHTS ARE EXPRESSLY RESERVED BY SAMTEC, INC. THIS DOCUMENT SHALL NOT BE DISCLOSED, IN WHOLE OR PART, TO ANY UNAUTHORIZED PERSON OR ENTITY NOR REPRODUCED, TRANSFERRED OR INCORPORATED IN ANY OTHER PROJECT IN ANY MANNER WITHOUT THE EXPRESS WRITTEN CONSENT OF SAMTEC, INC.</p>	<p>DO NOT SCALE DRAWING</p>	
	<p>SHEET SCALE: 2:1</p>	
	<p>DESCRIPTION: ULTRA MICRO POWER SOCKET</p>	
	<p>DWG. NO. UMPS-XX-XX.X-X-VT-XX-X-XX</p>	
<p>BY: JOE Z</p>		<p>03/22/2017</p>
<p>SHEET 2 OF 3</p>		

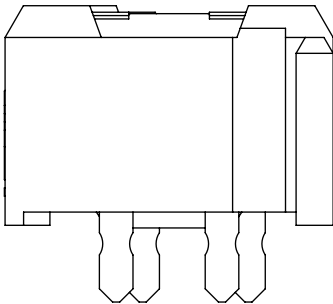
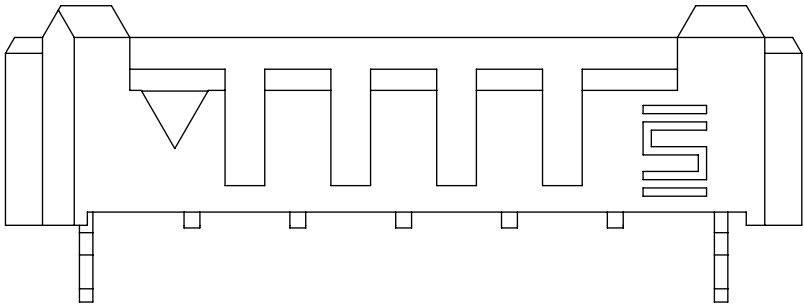
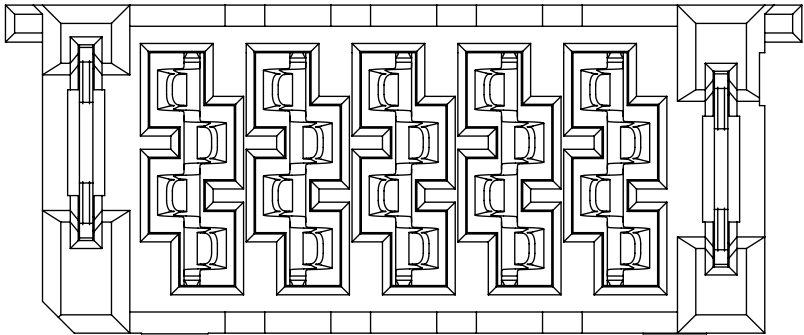



FIG 4
UMPS-05-03.5-X-VT-SM-L-WT SHOWN
(DIFFERENT AS SHOWN, OTHERWISE SAME AS FIG 1 & 2)
(NOT RELEASED)

<p>• PROPRIETARY NOTE •</p> <p>THIS DOCUMENT CONTAINS CONFIDENTIAL AND PROPRIETARY INFORMATION AND ALL DESIGN, MANUFACTURING, REPRODUCTION, USE, PATENT RIGHTS AND SALES RIGHTS ARE EXPRESSLY RESERVED BY SAMTEC, INC. THIS DOCUMENT SHALL NOT BE DISCLOSED, IN WHOLE OR PART, TO ANY UNAUTHORIZED PERSON OR ENTITY NOR REPRODUCED, TRANSFERRED OR INCORPORATED IN ANY OTHER PROJECT IN ANY MANNER WITHOUT THE EXPRESS WRITTEN CONSENT OF SAMTEC, INC.</p>			
	520 PARK EAST BLVD, NEW ALBANY, IN 47150 PHONE: 812-944-6733 FAX: 812-948-5047 e-Mail: info@SAMTEC.com code 55322		
	DESCRIPTION: ULTRA MICRO POWER SOCKET		
	DWG. NO. UMPS-XX-XX.X-X-VT-XX-X-XX		
DO NOT SCALE DRAWING	BY: JOE Z	03/22/2017	SHEET 3 OF 3
SHEET SCALE: 2:1			