

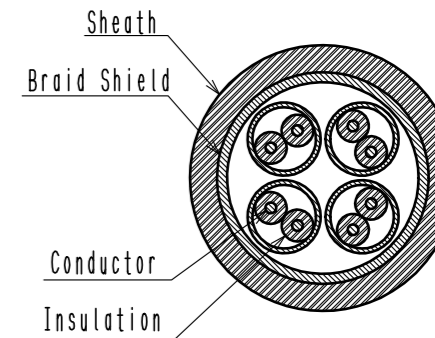
2 Pin Assignment For 10/100 Mbit/s And 1/10 Gbit/s Ethernet

Contact No.	Signal	
	10/100 Mbit/s	1/10 Gbit/s
1	TX+	BI_DA+
2	TX-	BI_DA-
3	N. C	N. C
4	N. C	BI_DC+
5	N. C	BI_DC-
6	RX+	BI_DB+
7	RX-	BI_DB-
8	N. C	N. C
9	N. C	BI_DD+
10	N. C	BI_DD-

Notes. 1. Applicable cable condition is shown below.
 In case of using a not applicable cable, please contact our sales representative.
 Refer to the technical specification (ETAD-E3162-00) for wiring and assembly procedure.

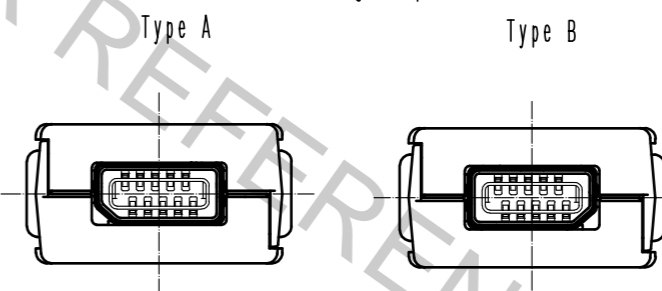
Applicable Cable

Items	Applicable Condition	
Conductor	Size	AWG#28 to 26
	Composition	7 stranded
	Material	Annealed copper wire
Insulation O. D.	φ 0.95 to 1.05mm	
Braid Shield	Tin plating	
Sheath O. D.	φ 6.3 to 7.2mm	



2 This product (Type A) is defined for 10/100 Mbit/s and 1/10 Gbit/s Ethernet communication. Please use Type B for all other non Ethernet applications like signaling, serial or other industrial bus communication systems.

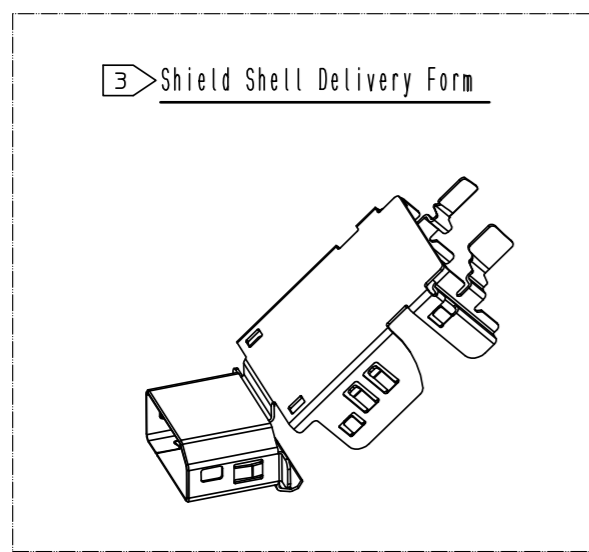
Mating Shape



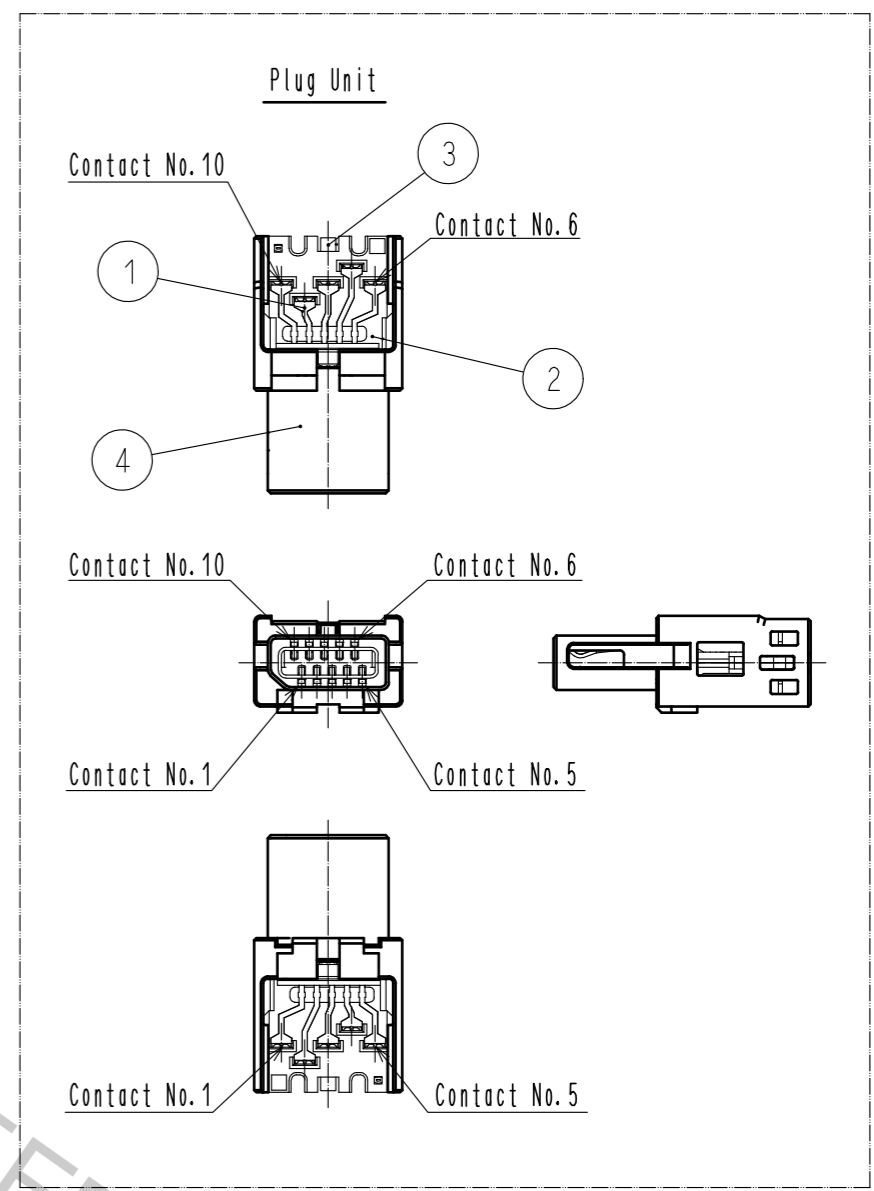
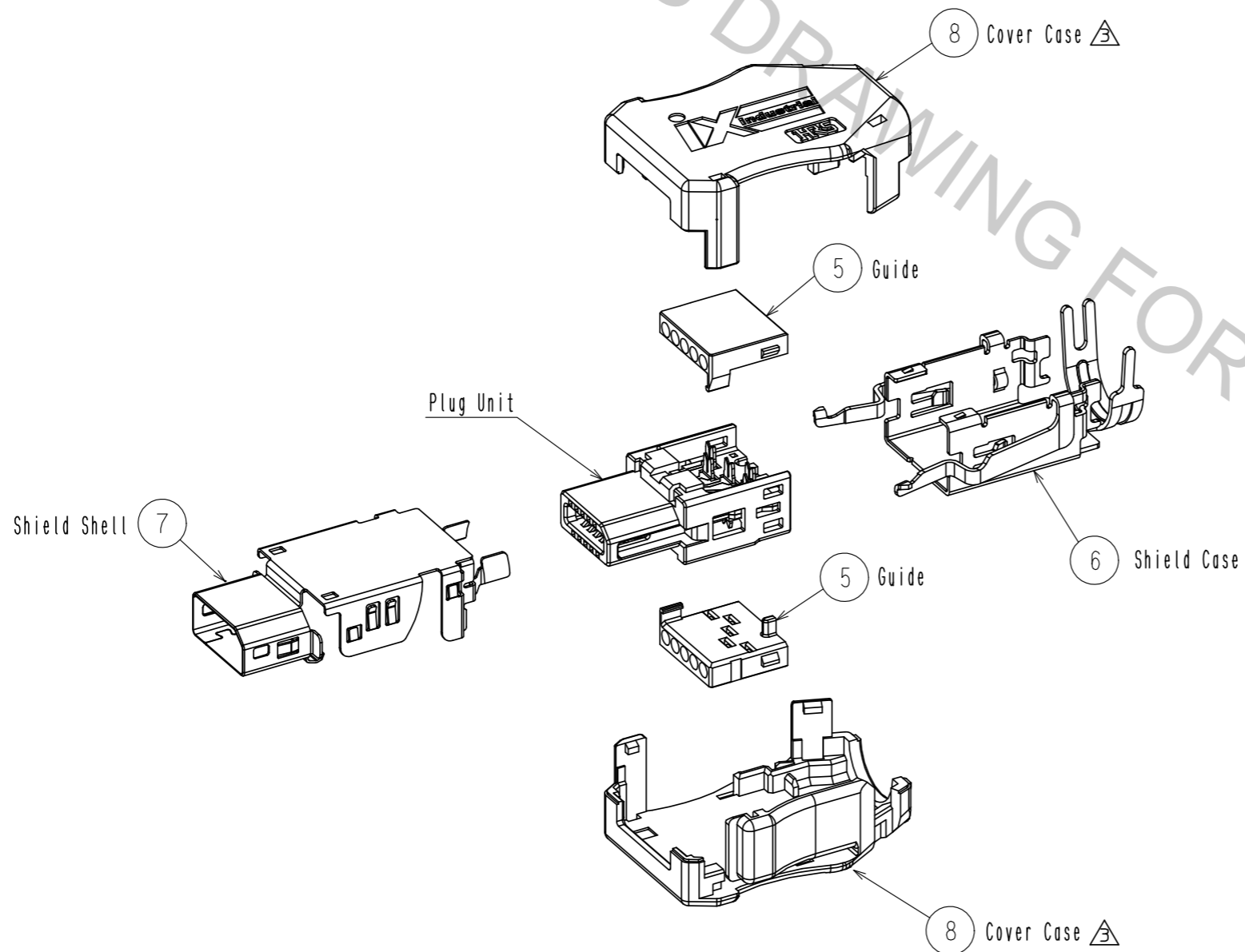
3 This product except plug unit is packed separately by the types of parts. Shield Shell is packed in pre-bended state. (See next page.)

3	Stainless Steel		8	PC	Dark gray, UL94V-0		
2	PA	Black, UL94V-0	7	Stainless Steel	Nickel 0.2 μm min		
1	Copper Alloy	Contact area : Palladium-Nickel 0.75 μm min + Gold 0.05 μm min	6	Stainless Steel	Nickel 1 μm min		
		Wiring area : Gold 0.03 μm min	5	PC	Clear, UL94V-0		
		Under plating : Nickel 2 μm min	4	PA	Black, UL94V-0		
NO.	MATERIAL	FINISH . REMARKS	NO.	MATERIAL	FINISH . REMARKS		
UNITS mm		SCALE 2 : 1	COUNT 2	DESCRIPTION OF REVISIONS DIS-E-00001437	DESIGNED SG. CHAMURA	CHECKED KI. NAGANUMA	DATE 18.07.02
HRS HIROSE ELECTRIC CO., LTD.		APPROVED : RI. TAKAYASU	17.03.28	DRAWING NO. EDC-129419-01-00			
		CHECKED : KI. NAGANUMA	17.03.28	PART NO. IX30G-A-10S-CV<7.0><01>			
		DESIGNED : HT. SATO	17.03.28	CODE NO. CL251-0020-0-01			
		DRAWN : HT. SATO	17.03.28				

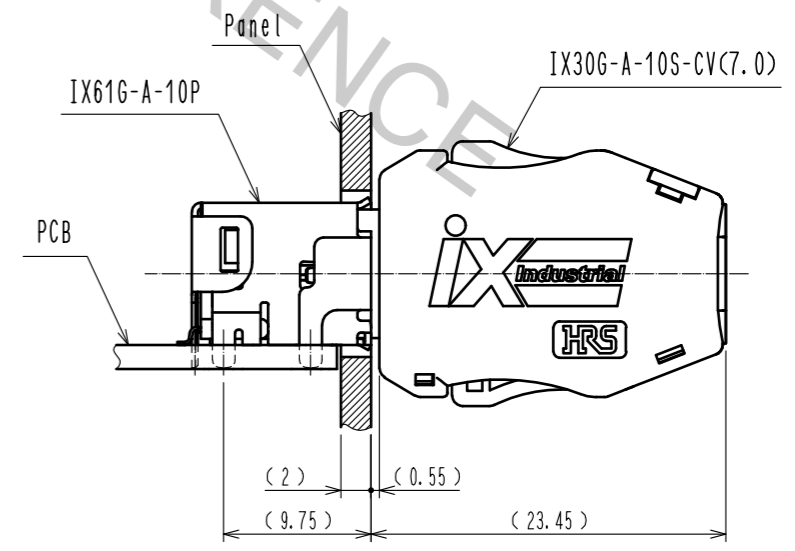
Mar.1.2019 Copyright 2019 HIROSE ELECTRIC CO., LTD. All Rights Reserved.
 In case that the application demands a high level of reliability, such as automotive,
 please contact a company representative for further information.



Product Structure



Mating Condition



HRS	DRAWING NO.	EDC-129419-01-00
	PART NO.	IX30G-A-10S-CV(7.0)(01)
	CODE NO.	CL251-0020-0-01
		\triangle 2/2