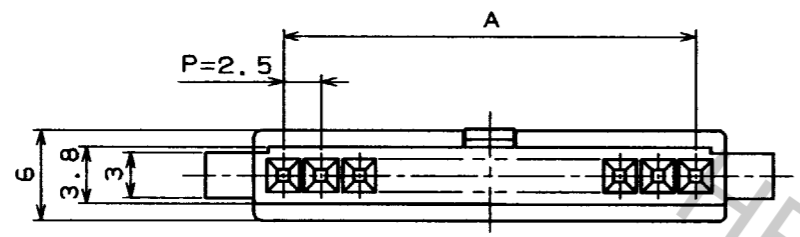
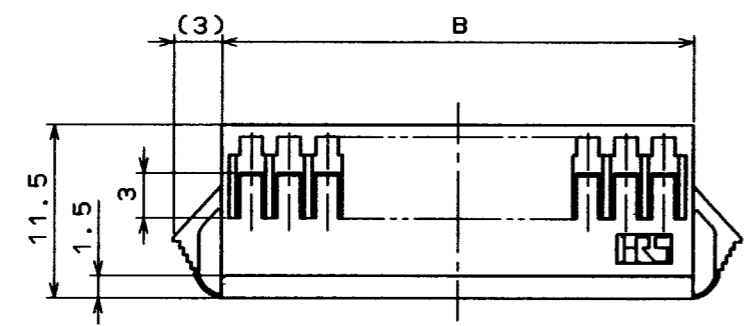
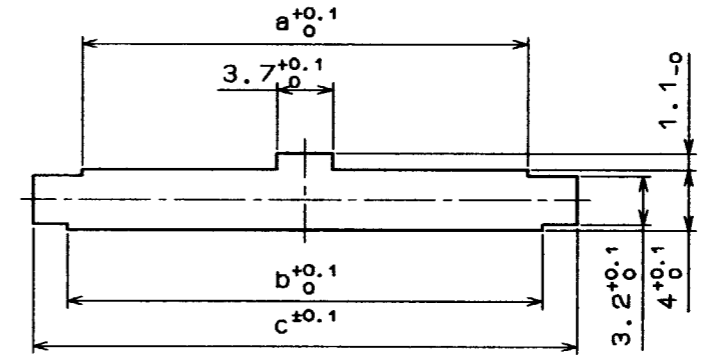


Mar.1.2019 Copyright 2019 HIROSE ELECTRIC CO., LTD. All Rights Reserved.
 In case that the application demands a high level of reliability, such as automotive,
 please contact a company representative for further information.

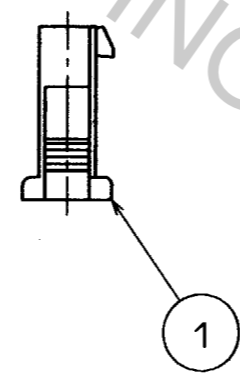
COUNT	DESCRIPTION OF REVISIONS	BY	CHKD	DATE	COUNT	DESCRIPTION OF REVISIONS	BY	CHKD	DATE
△				..	△				..
△				..	△				..
△				..	△				..



< PANEL CUTOUT >



PLEASE NOTE THAT A DIMENSION (PANEL THROUGH HOLE) VARY WITH THICKNESS OF PANEL WHEN YOU MOUNT DF1B EXTENSION SOCKET TO THE PANEL. AND PLEASE PROCESS THE PANEL THROUGH HOLE WITHOUT BURR.

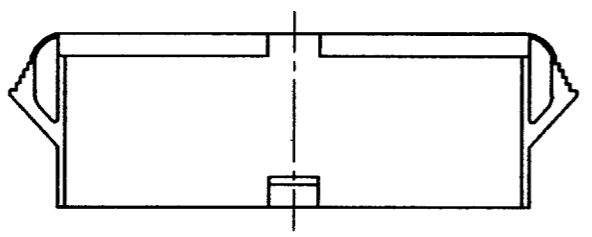


CONTACT NO. 1

NUMBER OF CONTACTS



CAVITY NO.



HRS NO.	PART NO.	A	B	PANEL CUTOUT				
				a	b	PANEL THICKNESS		
						0.5-1.2	1.3-1.6	1.7-2.0
CL541-0320-8	DF1B-2ES-2.5RC	2.5	6.5	4.7	6.7	10.8	11.3	12.0
0321-0	3	5.0	9.0	7.2	9.2	13.3	13.8	14.5
0322-3	4	7.5	11.5	9.7	11.7	15.8	16.3	17.0
0323-6	5	10.0	14.0	12.2	14.2	18.3	18.8	19.5
0324-9	6	12.5	16.5	14.7	16.7	20.8	21.3	22.0
0325-1	7	15.0	19.0	17.2	19.2	23.3	23.8	24.5
0326-4	8	17.5	21.5	19.7	21.7	25.8	26.3	27.0
0327-7	9	20.0	24.0	22.2	24.2	28.3	28.8	29.5
0328-0	10	22.5	26.5	24.7	26.7	30.8	31.3	32.0
0329-2	11	25.0	29.0	27.2	29.2	33.3	33.8	34.5
0330-1	12	27.5	31.5	29.7	31.7	35.8	36.3	37.0
0331-4	13	30.0	34.0	32.2	34.2	38.3	38.8	39.5

NO. MATERIAL FINISH, REMARKS		1 POLYAMIDE	NATURAL (WHITE) UL94V-0		
CODE NO. (OLD)		NO. MATERIAL	FINISH, REMARKS		
DRAWN		DESIGNED	CHECKED	APPROVED	RELEASED
M. Gotoh		M. Gotoh	J. Oma	H. Yamamoto	
'94. 3. 24		'94. 3. 24	94. 3. 25	94. 3. 25	
SCALE	DRAWING NO.	PART NO.			
2 : 1	EDC3-160093-02	DF1B-*ES-2.5RC			
UNITS	HRS HIROSE ELECTRIC CO., LTD.	CODE NO.	0320	8	1
mm		CL541-	0331	- 4	1