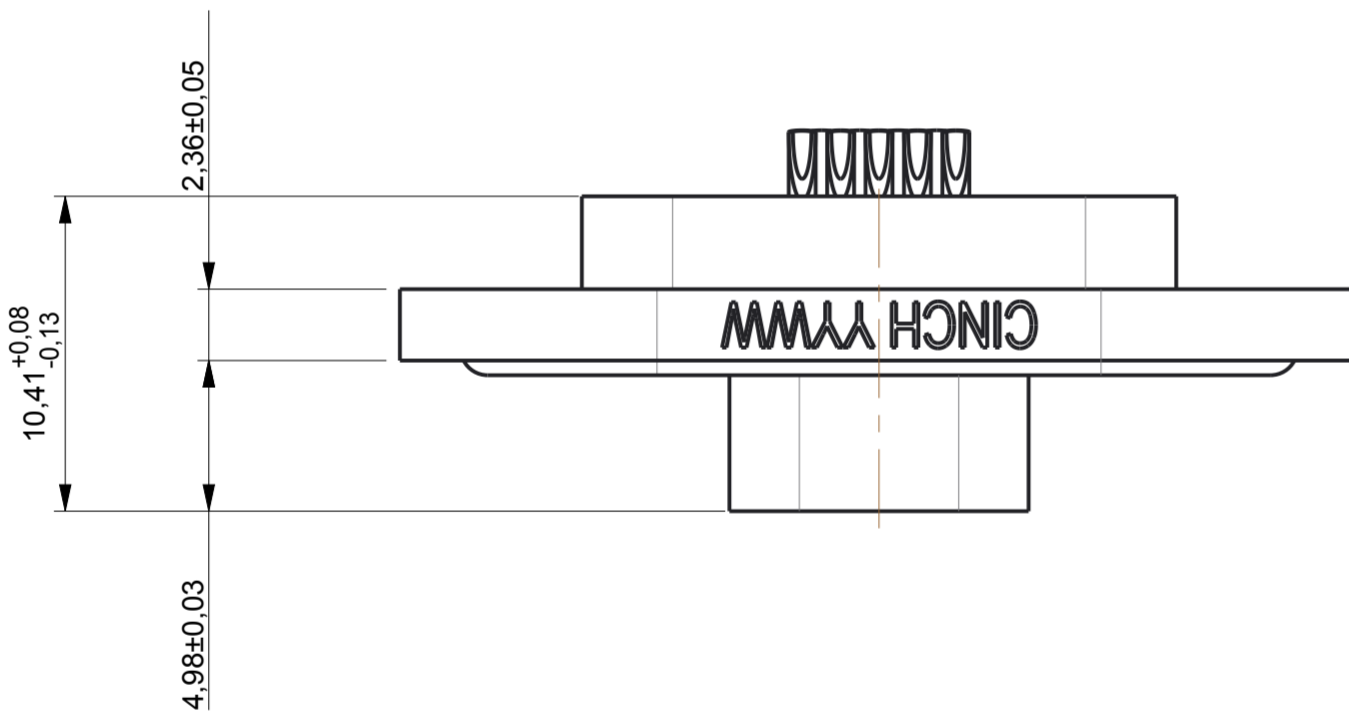
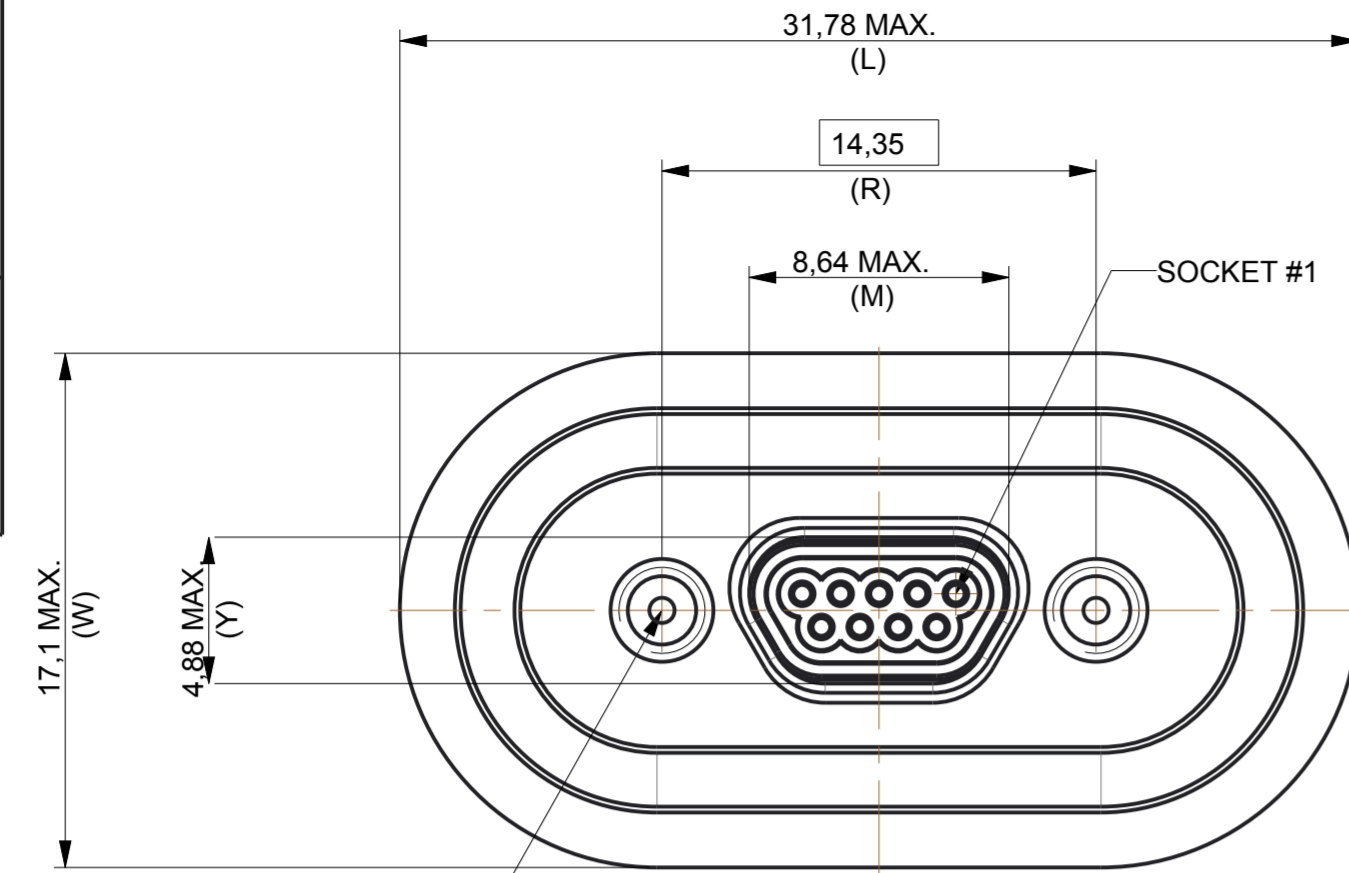


DN000100000000N_CUST	
RELEVANT SPEC	SHT 1 OF 1
MIL-DTL-83513 INTERFACE	EX No.
PROJ MODEL FILE	NA
DN000100000000N	IF IN DOUBT - ASK
ALL DIMENSIONS ARE IN mm	

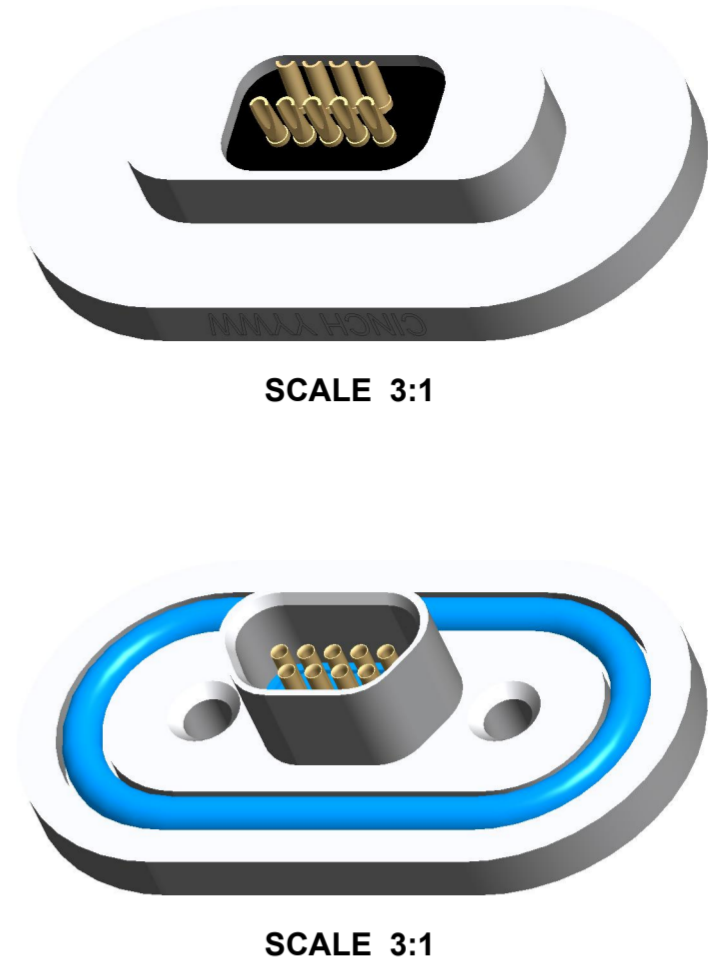
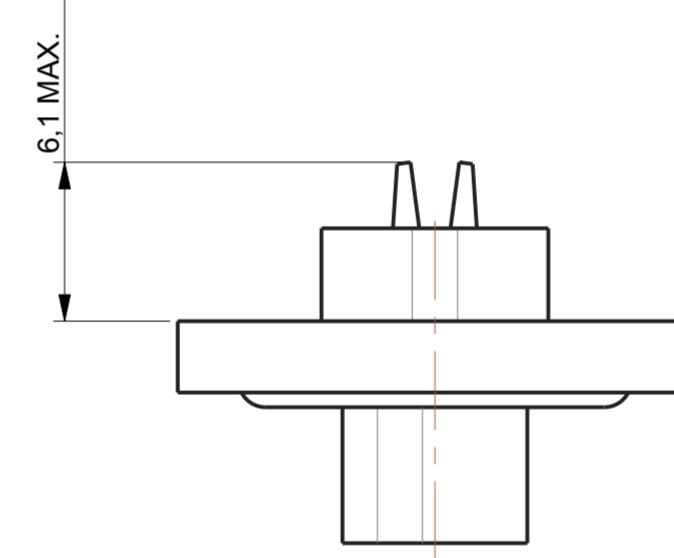
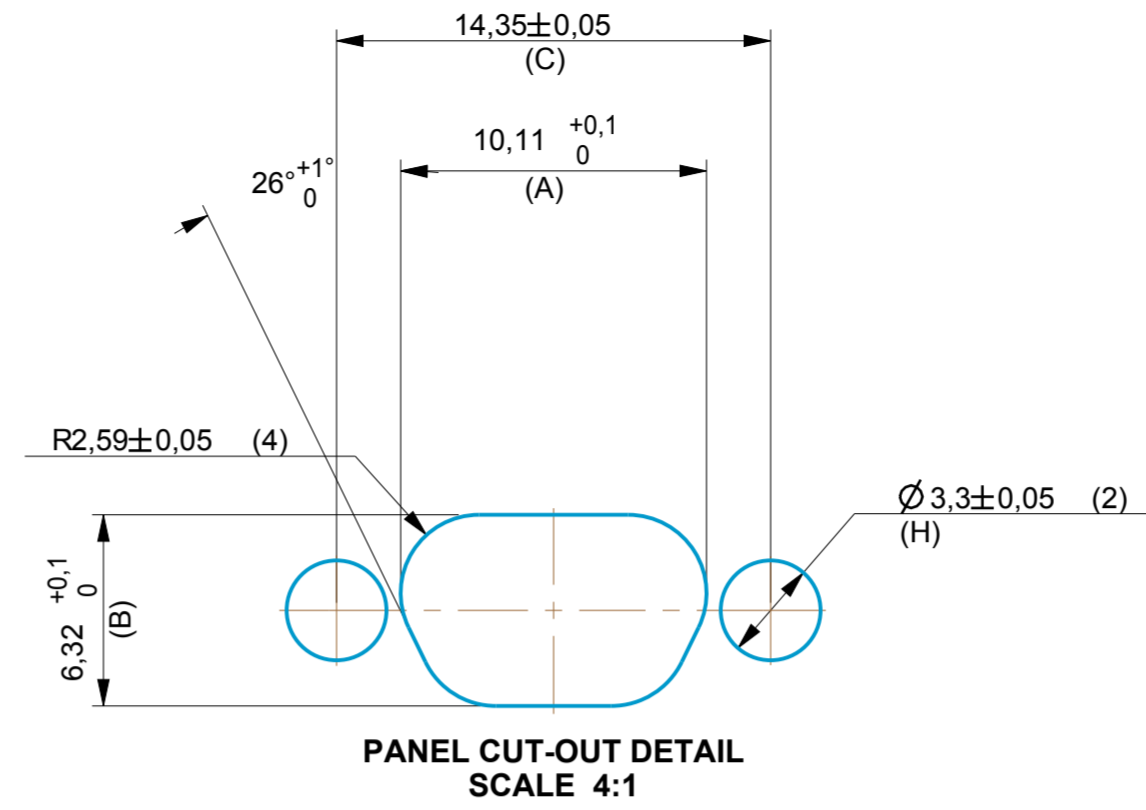
cinch CONNECTIVITY SOLUTIONS
a bel Group

ISSUE GROUPS
A

4-40 UNC - 2B TAP ∇ 4,000
#43 DRILL (2,261) ∇ 4,471



PART NUMBER	A	B	C	H	DESCRIPTION2		
DN0000809	10,11	6,32	14,35	3,30	9W REVERSE MOUNT PANEL		
DN0000815	13,92	6,32	18,16	3,30	15W REVERSE MOUNT PANEL		
DN0000821	17,73	6,32	21,97	3,30	21W REVERSE MOUNT PANEL		
DN0000825	20,27	6,32	24,51	3,30	25W REVERSE MOUNT PANEL		
DN0000831	24,08	6,32	28,34	3,30	31W REVERSE MOUNT PANEL		
DN0000837	27,89	6,32	32,13	3,30	37W REVERSE MOUNT PANEL		
DN0000851	26,62	7,42	30,86	3,30	51W REVERSE MOUNT PANEL		
DN0000810	39,00	8,52	45,72	4,10	100W REVERSE MOUNT PANEL		
PART NUMBER	SALES_CODE	L_MAX	M_MAX	R_BASIC	W_MAX	Y_MAX	DESCRIPTION2
DN000100000900N	DCDH-9SSBN	31,78	8,64	14,35	17,10	4,88	9W SOLDERPOT SOCKET ASSEMBLY
DN000100001500N	DCDH-15SSBN	34,26	12,45	18,16	17,10	4,88	15W SOLDERPOT SOCKET ASSEMBLY
DN000100002100N	DCDH-21SSBN	39,25	16,26	21,97	17,10	4,88	21W SOLDERPOT SOCKET ASSEMBLY
DN000100002500N	DCDH-25SSBN	41,76	18,80	24,51	17,10	4,88	25W SOLDERPOT SOCKET ASSEMBLY
DN000100003100N	DCDH-31SSBN	44,23	22,61	28,32	17,10	4,88	31W SOLDERPOT SOCKET ASSEMBLY
DN000100003700N	DCDH-37SSBN	49,22	26,42	32,13	17,10	4,88	37W SOLDERPOT SOCKET ASSEMBLY
DN000100005100N	DCDH-51SSBN	48,60	25,15	30,86	18,20	5,99	51W SOLDERPOT SOCKET ASSEMBLY



NOTES:

- DIMENSIONS ARE FOR REFERENCE ONLY.
- CUSTOMER DRAWING ONLY. NOT USED FOR CINCH MANUFACTURE.
- PART MARK CONNECTORS WITH CINCH AND DATE-CODE.
- CONNECTOR TO BE HERMETICALLY TESTED TO 1×10^{-8} cc/sec @ 1 ATMOSPHERE HELIUM.

MATERIAL SPECIFICATIONS:

- CONNECTOR SHELL: >ASTM ALLOY< SAE-AMS-QQ-A-250. ELECTROLESS Ni PER SAE-AMS-C-26074.
- CONTACT (FEMALE SOCKET): >Cu ALLOY<. Au PER MIL-DTL-45204, TYPE 1.
- INSULATOR: >PBT< PER MIL-M-24519.
- INTERFACIAL GASKET: >FVMQ< PER MIL-R-25988 OR >PMQ< PER ZZ-R-765.
- HARDWARE: >303SS< PASSIVATE DIP PER SAE-AMS-QQ-P-35. HARDWARE TO BE PURCHASED SEPERATELY TO SUIT PANEL THICKNESS.
- DUSTCAP: >LDPE< OR ANTI-STATIC >HDPE<.

GENERAL SPECIFICATIONS:

- ALL OTHER DETAILS AND DIMENSIONS TO BE AS PER MIL-DTL-83513 OR CINCH HERMETIC DURA-CON CATALOGUE.

THIS DRAWING IS COPYRIGHT AND IS ISSUED ON CONDITION IT IS NOT COPIED, REPRODUCED OR DISCLOSED TO A THIRD PARTY WITHOUT THE CONSENT IN WRITING OF Cinch CONNECTIVITY SOLUTIONS LTD. ATTENTION IS DRAWN TO THE FACT THE ARTICLE DISCLOSED MAY BE COVERED BY BRITISH OR FOREIGN PATENTS, GRANTED OR PENDING OR REGISTERED DESIGN.

APPD	GEN. TOLERANCES		TITLE		FINISHING	FINISHED HARDNESS	FINISH TREATMENT	COLOUR	
	2 DEC. PL	±0.1	1 DEC. PL	±0.2					HERMEYC MICROMINIATURE
DATE	02-Feb-17	1 DEC. PL	±0.2 <th>DATE</th> <td>02-Feb-17 <th>0 DEC. PL</th> <td>±0.5 <th>RAW MATL</th> </td></td>	DATE	02-Feb-17 <th>0 DEC. PL</th> <td>±0.5 <th>RAW MATL</th> </td>	0 DEC. PL	±0.5 <th>RAW MATL</th>	RAW MATL	
PRELIM.	PRELIM.	ANGULAR	±1 <th>MATERIAL SPECIFICATION</th> <td>SOLDERPOT <th>TOOL R MAX.</th> <td>0.18 <th>APPD</th> <td>NOT</td> </td></td>	MATERIAL SPECIFICATION	SOLDERPOT <th>TOOL R MAX.</th> <td>0.18 <th>APPD</th> <td>NOT</td> </td>	TOOL R MAX.	0.18 <th>APPD</th> <td>NOT</td>	APPD	NOT
ITEM	9	ISSUE	1	SCALE	4:1	CHD	NOT	NOT	NOT
DESCRIPTION	HYSOL RESIN (BLACK)	QTY		FINISH MATL		FINISHING		FINISHED HARDNESS	
ITEM	8	QTY		FINISH MATL		FINISHING		FINISHED HARDNESS	
DESCRIPTION	HYSOL HARDENER	QTY		FINISH MATL		FINISHING		FINISHED HARDNESS	
ITEM	7	QTY		FINISH MATL		FINISHING		FINISHED HARDNESS	
DESCRIPTION	HERMETIC COMPOUND	QTY		FINISH MATL		FINISHING		FINISHED HARDNESS	
ITEM	6	QTY		FINISH MATL		FINISHING		FINISHED HARDNESS	
DESCRIPTION	9-51W O-RING SEAL	QTY		FINISH MATL		FINISHING		FINISHED HARDNESS	
ITEM	5	QTY		FINISH MATL		FINISHING		FINISHED HARDNESS	
DESCRIPTION	9-51W SEALING GASKET	QTY		FINISH MATL		FINISHING		FINISHED HARDNESS	
ITEM	4	QTY		FINISH MATL		FINISHING		FINISHED HARDNESS	
DESCRIPTION	9-51W SKT INSULATOR	QTY		FINISH MATL		FINISHING		FINISHED HARDNESS	
ITEM	3	QTY		FINISH MATL		FINISHING		FINISHED HARDNESS	
DESCRIPTION	9-51W SKT DUSTCAP	QTY		FINISH MATL		FINISHING		FINISHED HARDNESS	
ITEM	2	QTY		FINISH MATL		FINISHING		FINISHED HARDNESS	
DESCRIPTION	9-51W OUTER SKT SHELL PLTD	QTY		FINISH MATL		FINISHING		FINISHED HARDNESS	
ITEM	1	QTY		FINISH MATL		FINISHING		FINISHED HARDNESS	
DESCRIPTION	SIPOT SKT CONTACT SHORT	QTY		FINISH MATL		FINISHING		FINISHED HARDNESS	