

P	LTR	DESCRIPTION	DATE	DWN	APVD
	A	DRAWING ACTIVATED AS PER ECR-19-006417	25APR2019	RS	CVS

NOTES:

DIMENSIONS BEFORE APPLICATION

1. MATERIALS:

CONTACT : COPPER ALLOY, TIN PLATED
 HOUSING: PPE+PS; COLOR: DARK GREY
 BUTTON: PPE+PS; COLOR: DARK GREY

2. APPLICABLE CABLES:

A) APPROVED ACCORDING UL FILE E353372 FOR SOLAR CABLES FROM 5.9 mm TO 7.2 mm

B) UNDER APPROVAL BY IEC62852 FOR FOLLOWING CABLE TYPES FROM DEFINED MANUFACTURERS:

- TE CABLE PN 2328394, 2.5 mm² (14 AWG)
- TE CABLE PN 2270245, 4 mm² (12 AWG)
- TE CABLE PN 2270260, 4 mm² (12 AWG)
- TE CABLE PN 2328400, 6 mm² (10 AWG)
- TE CABLE PN 2270215, 4 mm² (12 AWG)
- TE CABLE PN 2270259, 4 mm² (12 AWG)
- BYSON 6351D 2.5mm²/14AWG
- BYSON 6352D 4mm²/12AWG
- BYSON 6353D 6mm²/10AWG
- HONGLIN DPN4012A20 4mm²/12AWG

3. MATING CONNECTORS, TE PART NO.:

- 2315176-1 (SOLARLOK 2.0)
- x-2270024-y (PV4-S)
- x-1971920-y (PV4-PM)

4 TUV CERTIFICATION IN PROGRESS / PENDING APPROVAL

5 MOULDING PRODUCTION DATE MARKING

6 AREA FOR LASER PRINTING DATA MATRIX AND PARTNUMBER
 P P P P P P P P V Y Y W D F L # # # # #
 P P P P P P P P = PART NUMBER
 V = VERSION CUSTOMER DRAWING
 Y Y = LAST TWO DIGITS OF YEAR 19
 W W = WEEK NUMBER
 D = WEEKDAY (1 MONDAY)
 F = FACTORY CODE (T = TRUTNOV)
 L = MANUFACTURING LINE (M = MANUAL)

7 CABLE FOR REFERENCE ONLY

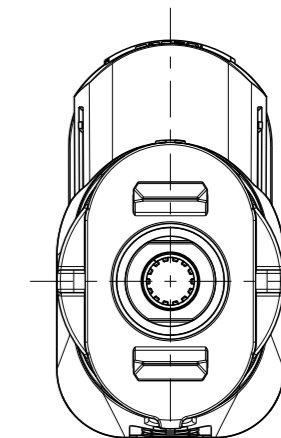
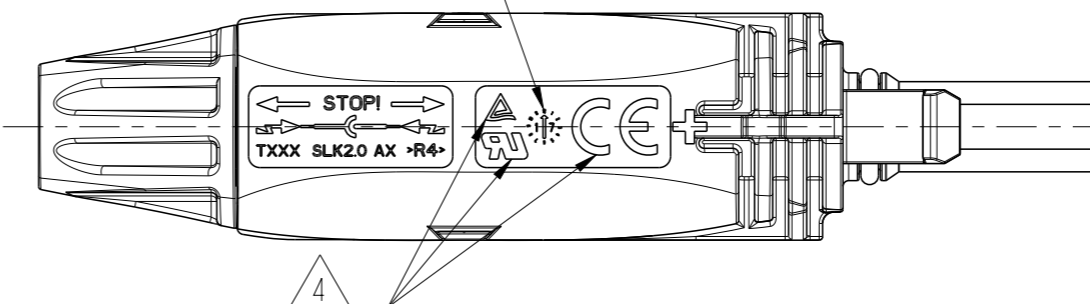
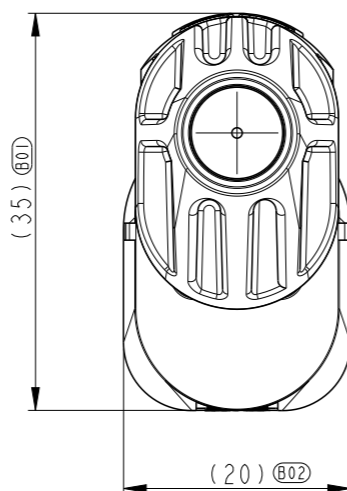
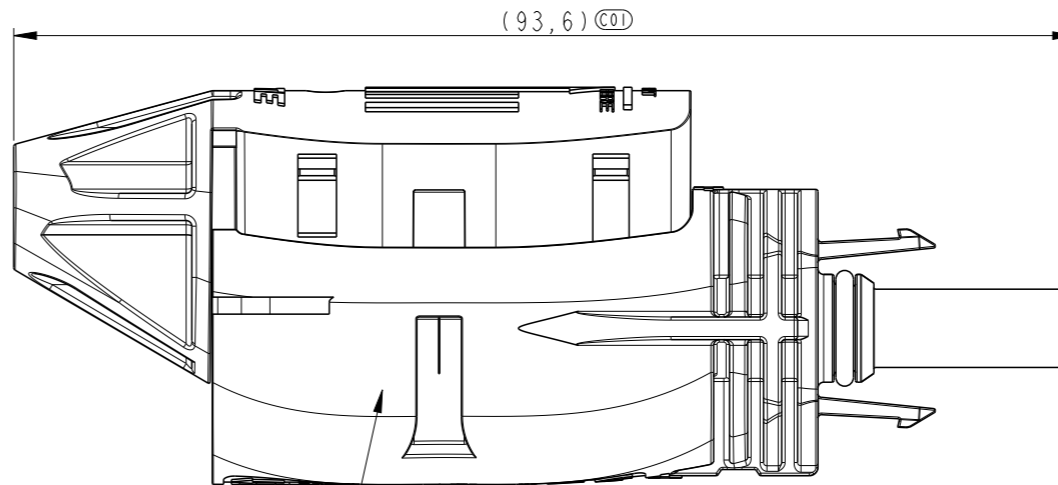
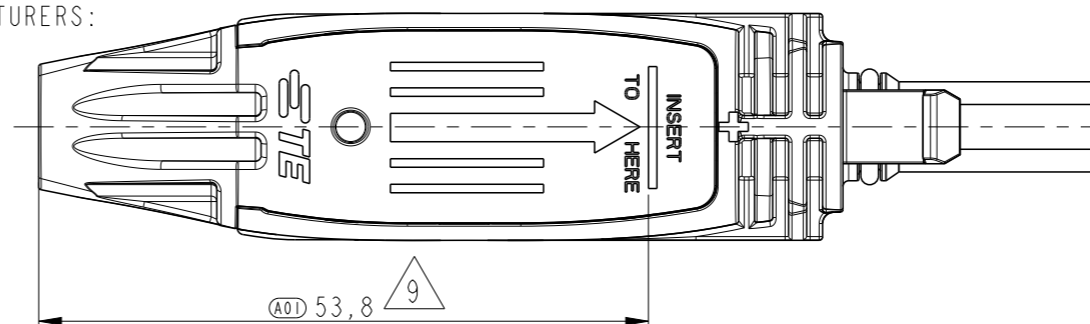
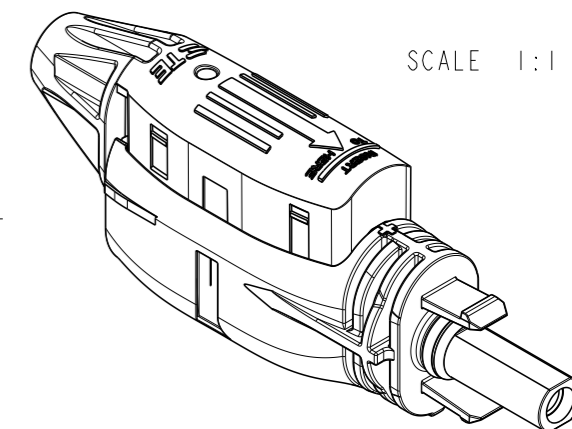
8 WHEN BUTTON AND HOUSING RIBS ARE ALIGNED,
 THE CONNECTOR IS CORRECTLY TERMINATED

9 MINIMUM CABLE INSERTION LENGTH 53.8 ± 2 mm

10. CHECK APPLICATION SPEC 114-133104
 FOR PROPER CABLE CONNECTION

11. PACKED IN SHIPPABLE BOXES OF 200PCS, INSIDE THE BOX
 ARE 20 BAGS OF 10 CONNECTORS EACH.
 OTHER PACKAGING FORMAT AND QUANTITY UNDER DEVELOPMENT.

P/N 2308033-1 AS SHOWN
 MODEL CODE: SLK-SK-1-BL-XX



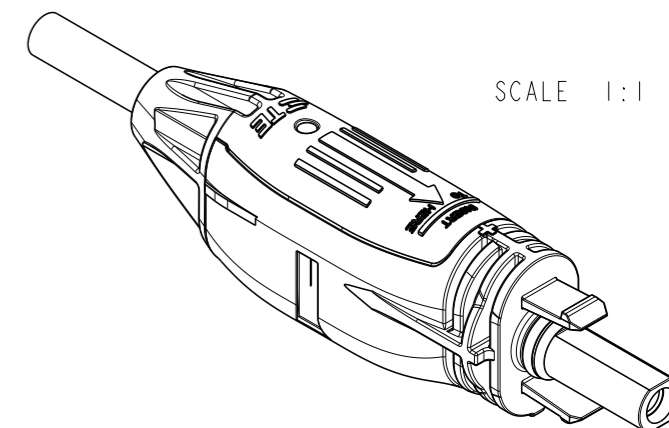
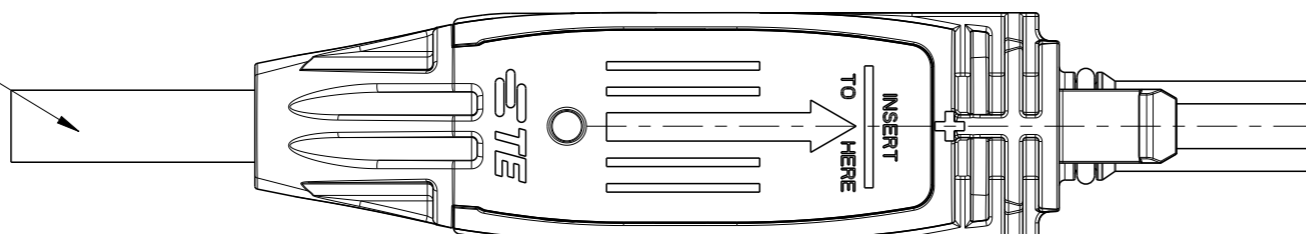
THIS DRAWING IS A CONTROLLED DOCUMENT.		DWN	17NOV2017	STE TE Connectivity	
		CHK	RAGHAVENDRA.K 31JAN2018		
		APVD	F.DENDAS 31JAN2018	NAME	
		PRODUCT SPEC	O.I.F.I.J.N.S.E	SOLARLOK 2.0 SOCKET CONNECTOR	
DIMENSIONS:		APPLICATION SPEC	108-133104	SIZE	RESTRICTED TO
mm	TOLERANCES UNLESS OTHERWISE SPECIFIED:	114-133104		A3	
	0 PLC ±0.5	WEIGHT	-	CAGE CODE	
	1 PLC ±0.5	CUSTOMER DRAWING		00779	
	2 PLC ±0.5			DRAWING NO	
	3 PLC ±			G-2308033	
	4 PLC ±			SCALE	
	ANGLES ±3°			3:2	
MATERIAL	FINISH			SHEET	
SEE NOTES	-			1 OF 2	
				REV	
				A	

REVISIONS

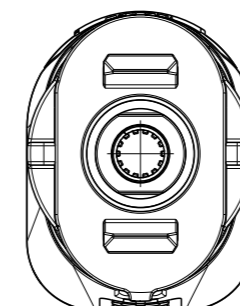
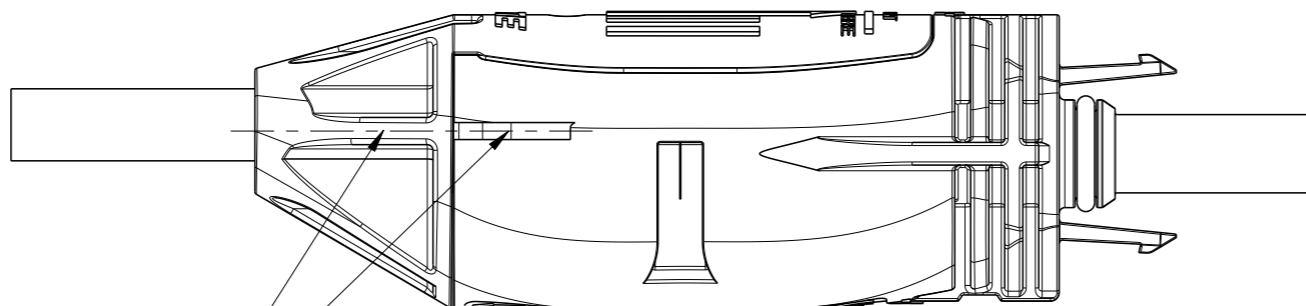
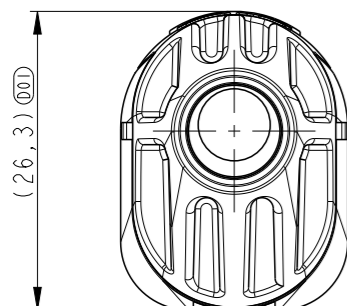
P	LTR	DESCRIPTION	DATE	DWN	APVD
-	-	SEE SHEET 1	-	-	-

DIMENSIONS AFTER APPLICATION

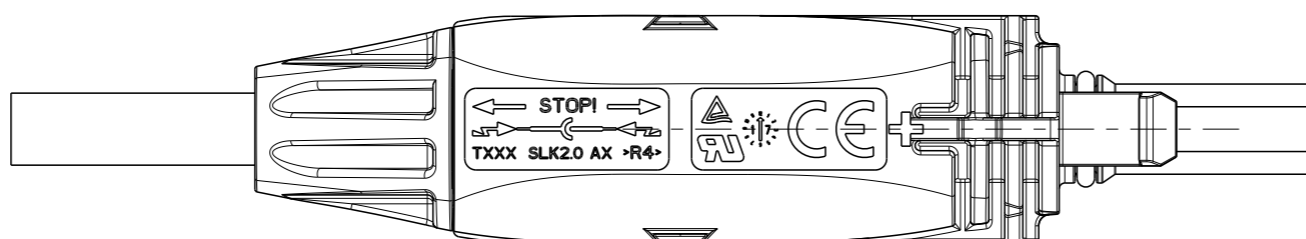
7



SCALE 1:1



8



THIS DRAWING IS A CONTROLLED DOCUMENT.

DIMENSIONS: mm	TOLERANCES UNLESS OTHERWISE SPECIFIED:
	0 PLC ±0.5
	1 PLC ±0.5
	2 PLC ±0.5
	3 PLC ±
	4 PLC ±
	ANGLES ±3°
MATERIAL SEE NOTES	FINISH -

DWN	17NOV2017
CHK	RAGHAVENDRA.K
APVD	31JAN2018
PRODUCT SPEC	F.DENDAS
APPLICATION SPEC	O.I.F.I.J.N.S.E
WEIGHT	31JAN2018
CUSTOMER DRAWING	108-133104
	114-133104

TE Connectivity		NAME		RESTRICTED TO
		SOLARLOK 2.0 SOCKET CONNECTOR		
SIZE	CAGE CODE	DRAWING NO	-	
A3	00779	C-2308033	-	
SCALE		SHEET	OF	REV
3:2		2	2	A