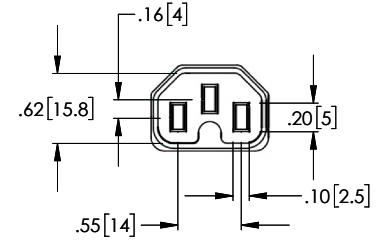
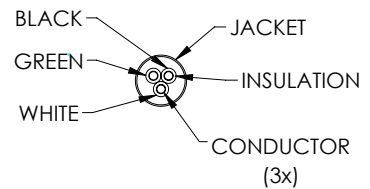
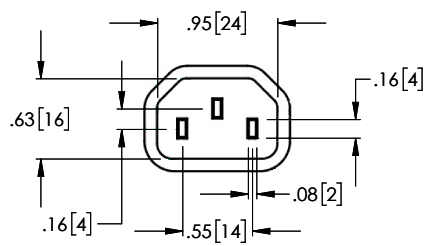
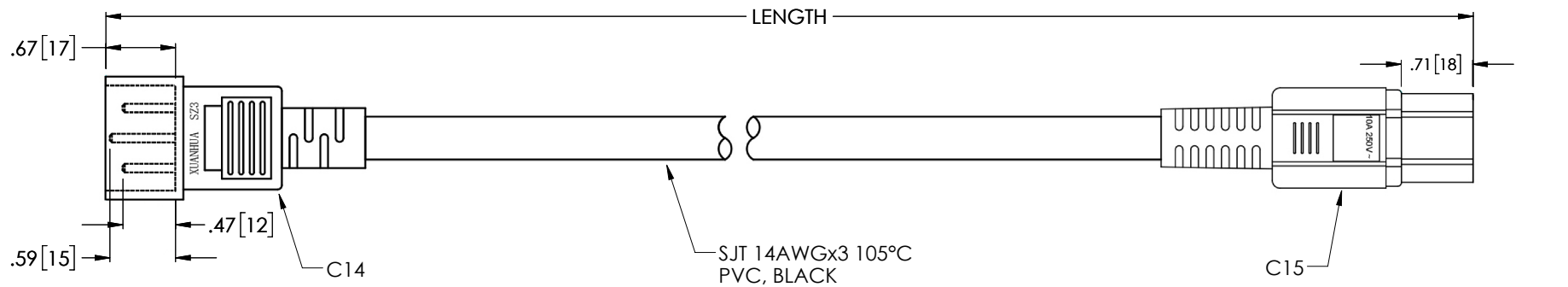


THE INFORMATION CONTAINED IN THIS DRAWING IS THE SOLE PROPERTY OF L-COM, INC. ANY REPRODUCTION IN PART OR WHOLE WITHOUT THE WRITTEN PERMISSION OF L-COM, INC. IS PROHIBITED.

REVISIONS			
REV	DESCRIPTION	DATE	APPROVED
A	REV A DRAWING RELEASED	11/12/2018	BPUCHASKI



PART NUMBER	LENGTH FEET	LENGTH METERS
PPA00005-01F	1	.30
PPA00005-02F	2	.61
PPA00005-03F	3	.91
PPA00005-06F	6	1.83
PPA00005-08F	8	2.44
PPA00005-25F	25	7.62

**NOTES:**

- VOLTAGE RATING: AC ≥ 1500V/S
- CONNECTOR C14 POWER RATING: 15A UL-E257089
- CONNECTOR C15 POWER RATING: 15A UL-E257089
- CABLE: SGT 14AWGx3, 300V, 105°C VW-1 E313867 FT1
- CABLE ASSEMBLY SHALL BE INDIVIDUALLY PACKAGED IN ACCORDANCE WITH SPEC. PS-0031

**REGULATORY COMPLIANCE:**  
CE2011/65/EU (RoHS DIRECTIVE)

UNLESS OTHERWISE SPECIFIED, DIMENSIONS ARE IN INCHES [mm] OVERALL CABLE LENGTH TOLERANCE: ≤12 [305] = +1 [25] / -0 >12 [305] ≤60 [1524] = +2 [51] / -0 >60 [1524] ≤120 [3048] = +4 [102] / -0 >120 [3048] ≤300 [7620] = +6 [152] / -0 >300 [7620] = +5% / -0%	APPROVALS	DATE		50 HIGH STREET NORTH ANDOVER, MA 01845	
	DRAWN BY BPUCHASKI	10/29/2018		CATEGORY	POWER PRODUCTS
ALL OTHER DIMENSIONAL TOLERANCES: .X = ± .2 [5.08] .XX = ± .02 [5.1] .XXX = ± .005 [1.3]	CHECKED BY DFRISIELLO	10/29/2018		PRODUCT DESCRIPTION <b>HIGH TEMPERATURE POWER CORD C-14 TO C15, 15AMP</b>	
	APPROVED BY BGATES	10/29/2018			CONFIGURATION DETAILS OF UNDIMENSIONED FEATURES MAY VARY
PROJECTION	COLOR VARIATIONS MAY OCCUR	SIZE <b>A</b>	FSCM NO. <b>43321</b>	DWG. NO. PPA00005	REV. <b>A</b>
		SCALE: NONE		CAD FILE: PPA00005.SLDDRW	SHEET 1 OF 1