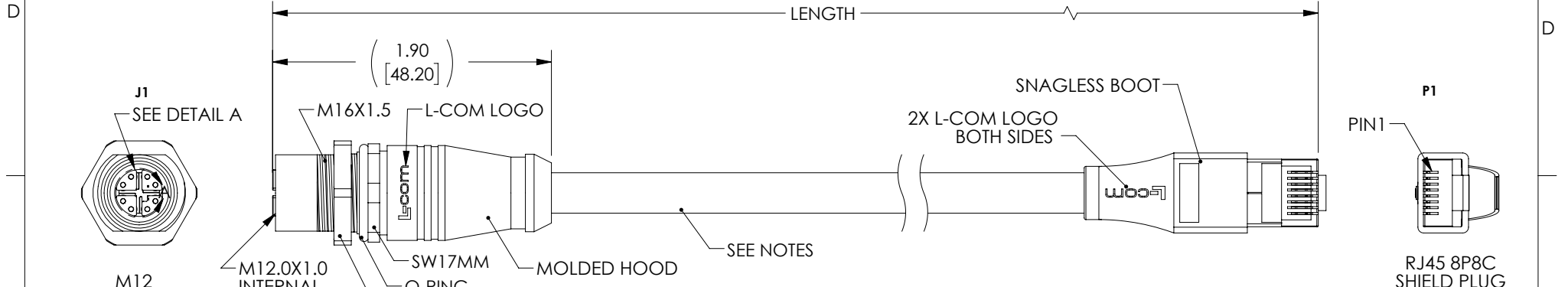


THE INFORMATION CONTAINED IN THIS DRAWING IS THE SOLE PROPERTY OF L-COM, INC. ANY REPRODUCTION IN PART OR WHOLE WITHOUT THE WRITTEN PERMISSION OF L-COM, INC. IS PROHIBITED.

REVISIONS			
REV	DESCRIPTION	DATE	APPROVED
A	REV A DRAWING RELEASED	03/14/2019	DGUTTADAUR



J1  
SEE DETAIL A

M12  
8 POSITION X-CODED  
SHIELD PANEL FEMALE

**NOTES**

**MATERIAL:**  
 MOLDED HOOD: THERMOPLASTIC POLYURETHANE, BLACK, UL94 V-0  
 INSULATOR: NYLON, BLACK  
 SHELL/SCREW NUT: BRASS, NICKEL PLATE  
 M12 CONTACTS: PHOSPHOR BRONZE, 15µ" MIN. GOLD PLATE  
 O-RING: VITON, GREEN  
 SNAGLESS BOOT: LOW SMOKE ZERO HALOGEN, BLACK  
 RJ45 HOUSING: POLYCARBONATE, CLEAR UL94V-0  
 RJ45 SHIELD/STRAIN RELIEF: BRASS, 100µ" MIN. NICKEL PLATE  
 RJ45 CONTACTS: PHOSPHOR BRONZE, 50µ" MIN. GOLD PLATE IN CONTACT AREA OVER 100µ" MIN. NICKEL PLATE OVERALL  
 CABLE:  
 C(UL)US TYPE CMX OUTDOOR, CAT 6A SF/UTP HIGH FLEX CABLE  
 (4) TWISTED PAIR, 26AWG STRANDED TINNED COPPER CONDUCTORS  
 SHIELDING: ALUMINUM/POLYESTER FOIL PLUS TINNED COPPER BRAID  
 JACKET: THERMOPLASTIC ELASTOMER, TEAL, NOM. DIAM. .275[6.99]

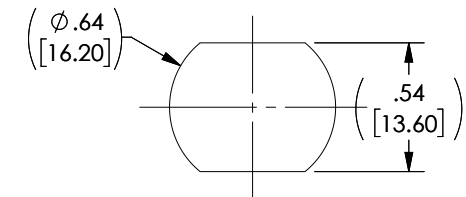
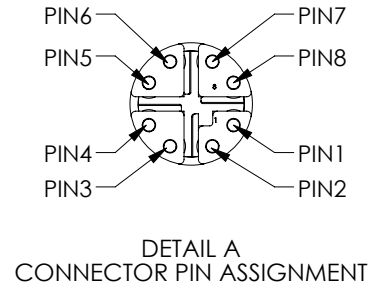
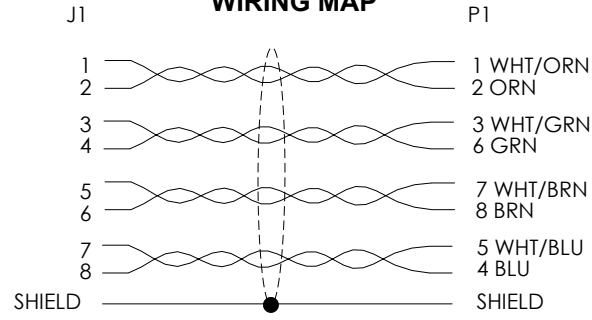
**ELECTRICAL:**  
 NOMINAL VOLTAGE RATING: 48 V AC/DC  
 MAX CURRENT: 0.5A

**APPLICATION:**  
 INGRESS PROTECTION RATING IS IP67 (MATED, J1 ONLY).

**ENVIRONMENTAL:**  
 OPERATING TEMPERATURE RANGE: -40°C TO +75°C  
 CABLE JACKET RESISTANCE: OIL, SUNLIGHT, AND WELD SPLATTER RESISTANT

**MISCELLANEOUS**  
 CABLE ASSEMBLIES TO BE TESTED FOR CONTINUITY WIRED TO IEC 61076-2-109 STANDARDS  
 CABLE ASSEMBLY SHALL BE INDIVIDUALLY PACKAGED IN ACCORDANCE WITH L-COM SPECIFICATION PS-0031.

**WIRING MAP**



PART NUMBER	LENGTH	
	FEET	METERS
TRG611-T6T-05M	1.64	0.5
TRG611-T6T-1M	3.28	1.0
TRG611-T6T-2M	6.56	2.0
TRG611-T6T-3M	9.84	3.0
TRG611-T6T-5M	16.41	5.0
TRG611-T6T-10M	32.82	10.0

UNLESS OTHERWISE SPECIFIED, DIMENSIONS ARE IN INCHES [mm] OVERALL CABLE LENGTH TOLERANCE: ≤12 [305] = +1 [25] / -0 >12 [305] ≤60 [1524] = +2 [51] / -0 >60 [1524] ≤120 [3048] = +4 [102] / -0 >120 [3048] ≤300 [7620] = +6 [152] / -0 >300 [7620] = +5% / -0%	APPROVALS	DATE
	DRAWN BY DCUI	02/14/2019
	CHECKED BY SPAN	02/14/2019
	APPROVED BY DGUTTADAUR	02/14/2019
ALL OTHER DIMENSIONAL TOLERANCES: .X = ± .2 [5.08] .XX = ± .02 [1.51] .XXX = ± .005 [1.3]	CONFIGURATION DETAILS OF UNDIMENSIONED FEATURES MAY VARY	
PROJECTION	COLOR VARIATIONS MAY OCCUR	

**L-com** Global Connectivity  
 50 HIGH STREET  
 NORTH ANDOVER, MA 01845

CATEGORY: TELECOM/MODULAR

PRODUCT DESCRIPTION: C6A M12MXF-RJ45 TPE 26 TEL

SIZE: A FSCM NO.: 43321 DWG. NO.: TRG611-T6T REF: A

SCALE: NONE CAD FILE: TRG611-T6T.SLDRW SHEET 1 OF 1