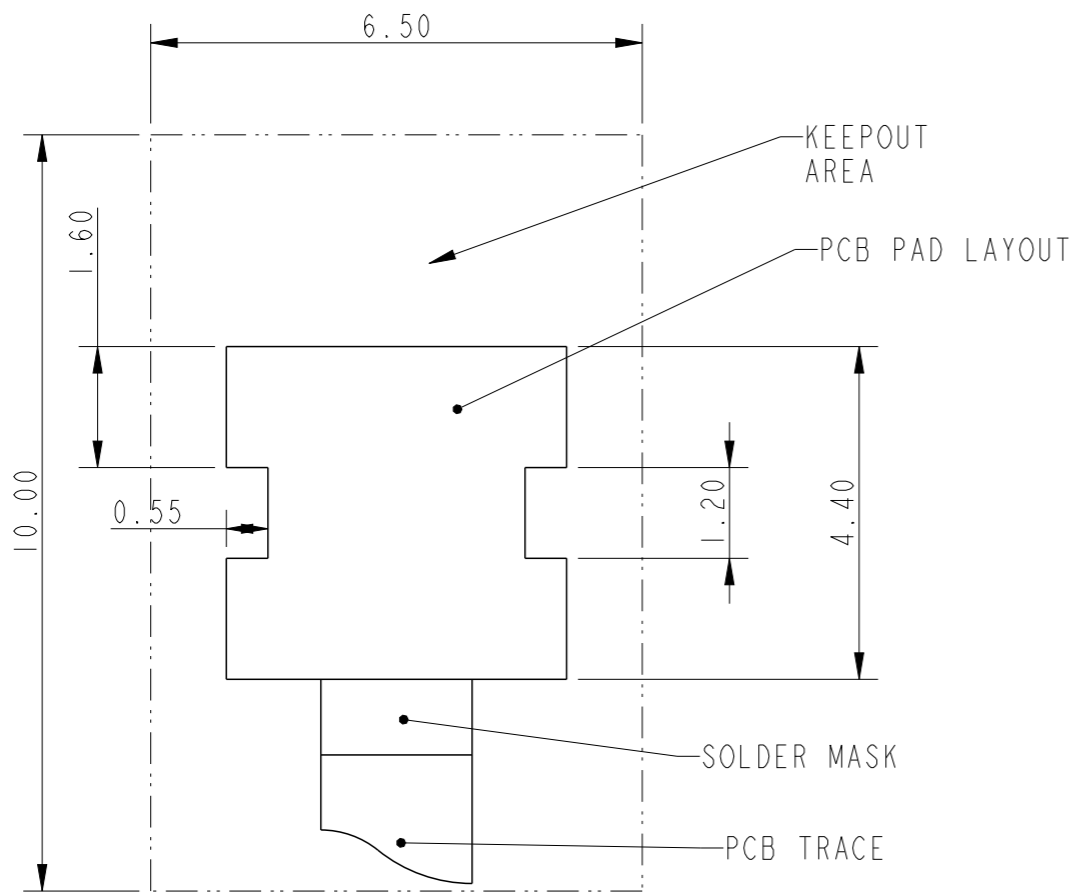


spec ref		dr	Sreenivas, Gok	2019/03/27	projection	MM	size	A3	scale	14:1	
tolerance std		eng	Sreenivas, Gok	2019/04/30			ecn no		ELX-I-33410-1		
ISO 406 ISO 1101		chr	-	-			rel level		Released		
TOLERANCES UNLESS OTHERWISE SPECIFIED		appr	K-Paul Biju	2019/04/30	product family						
surface	linear	0.X	±0.3	<b>Amphenol FCI</b>	GRIPLET 16-20AWG IDC, SMT 16-20AWG		dwg no	10150494c		rev	B
		0.XX	±0.1								
ISO 1302	angular	0°	±2°				cat. no.	-	Product - Customer Drw		sheet 1 of 2

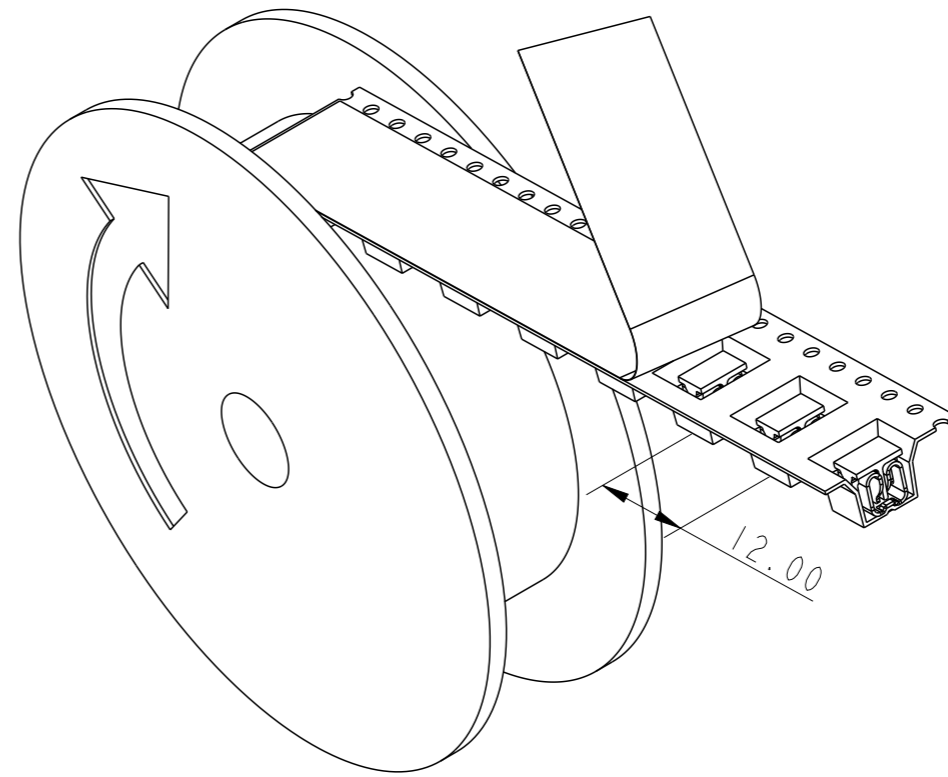
Amphenol FCI

© 2016 AFCI

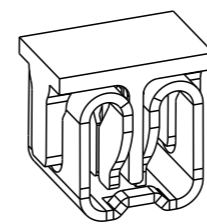
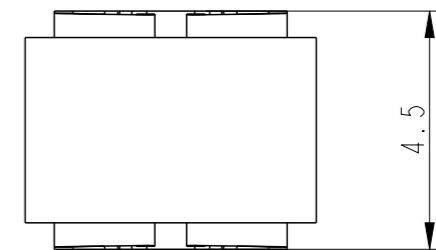


RECOMENDED SOLDER PAD FOOTPRINT AND KEEP-OUT ZONE FOR WIRE INSTALLATION TOOL.

- NOTES:
1. MATERIAL : COPPER ALLOY
  2. PLATING SPEC : TIN OVER NICKEL
  3. MIMUM CENTRAL LINE SPACING BETWEEN ADJACENT TERMINALS IS 5MM.

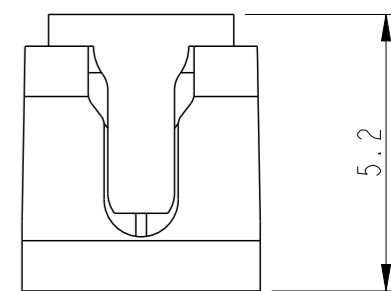
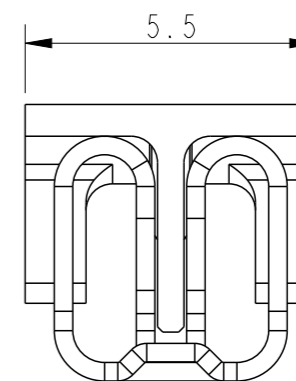


TAPE AND REEL  
REELING UNWINDING DIRESECTION  
SCALE 7:5



SCALE 4:1

PN : 10150494-10ITRLF  
SHOWN



WITH PICK AND PLACE  
CAP

spec ref		dr	Sreenivas, Gok	2019/03/27	projection	MM	size	A3	scale	15:1
tolerance std		eng	Sreenivas, Gok	2019/04/30			ecn no	ELX-I-33410-1		
ISO 406 ISO 1101		chr	-	-				rel level	Released	
surface	<input checked="" type="checkbox"/> linear <input type="checkbox"/> angular	0.X	±0.3		<b>Amphenol FCi</b>	GRIPLET 16-20AWG IDC, SMT 16-20AWG	dwg no	10150494c		
		0.XX	±0.1							
		0.XXX	±0.05							
ISO 1302		0°	±2°		cat. no.	Product - Customer Drw		sheet 2 of 2		