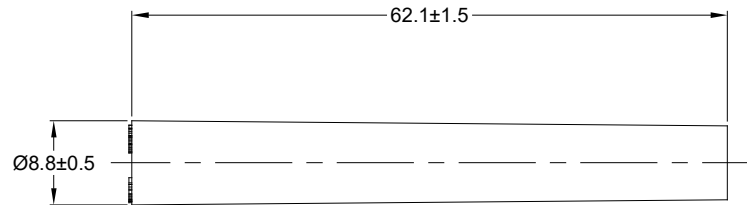
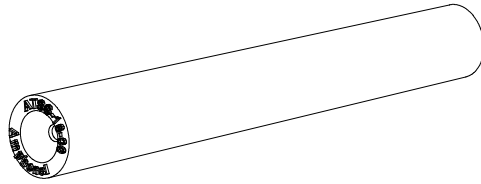


REVISIONS					
REV	ECO	DESCRIPTION	DATE	BY	APPR
A1	-	RELEASE	12APR19	SULLEN	TOMMY



NOTES: UNLESS OTHERWISE SPECIFIED

- MATERIAL:
SHELL: SILICONE RUBBER, RED
FINGER RETAINER: COPPER ALLOY
- SPECIFICATIONS:
2.1 OPERATING TEMPERATURE: -55°C TO +125°C
2.2 MOISTURE RESISTANCE: IP67
2.3 MATING CYCLE DURABILITY: 100 CYCLES
2.4 RoHS COMPLIANT
- ALL DIMENSIONS ARE FOR REFERENCE USE ONLY
- CONTACT SIZE AND WIRE RANGE:

CONTACT SIZE	MIN. INSUL O.D.	MAX. INSUL O.D.	TYPICAL WIRE RANGE	CURRENT RATING
16	2.54 mm (.100 in)	3.40 mm (.134 in)	14-20 AWG	13 AMPS

TITLE: SPEEDSPLICE SIZE 16 ENVIRONMENTAL
DWG NO: ATSS-16-00
REV: A1
SH: 1
OF: 1

ATSS-16-00		REF: JS-16-00	
PART NUMBER		DESCRIPTION	
QUANTITY	MATERIALS LIST		
UNLESS OTHERWISE SPECIFIED: 1) All dimensions are in metric (mm). 2) Tolerances are as follows: 1 PL DEC ±0.30 2 PL DEC ±0.15 3 PL DEC ±0.08 Fractions ±1/64 Angles ±1°		SIGNATURES DATE DRAWN: SULLENZHANG 12APR19 CHECKED: ORION LI 12APR19 ENGINEER: APPROVAL: TOMMY XIE 12APR19 CUSTOMER:	
MATERIAL SPECIFICATIONS:		THIS DRAWING IS SUPPLIED FOR INFORMATION ONLY. DESIGN FEATURES, SPECIFICATIONS AND PERFORMANCE DATA SHOWN HEREON ARE THE PROPERTY OF THE AMPHENOL CORPORATION. NO RIGHTS OF REPRODUCTION ARE IMPLIED. ALL DIMENSIONS ARE SUBJECT TO NORMAL MANUFACTURING VARIATIONS.	
PROCESS SPECIFICATIONS:		SIZE: B C- TYPE: DWG NO: ATSS-16-00 REVISION: A1	
NEXT ASSY:		SCALE: NONE SHEET 1 OF 1	

Amphenol

Sine Systems - www.amphenol-sine.com
44724 Morley Drive
Clinton Township, MI 48036

SPEEDSPLICE, SIZE 16,
ENVIRONMENTAL