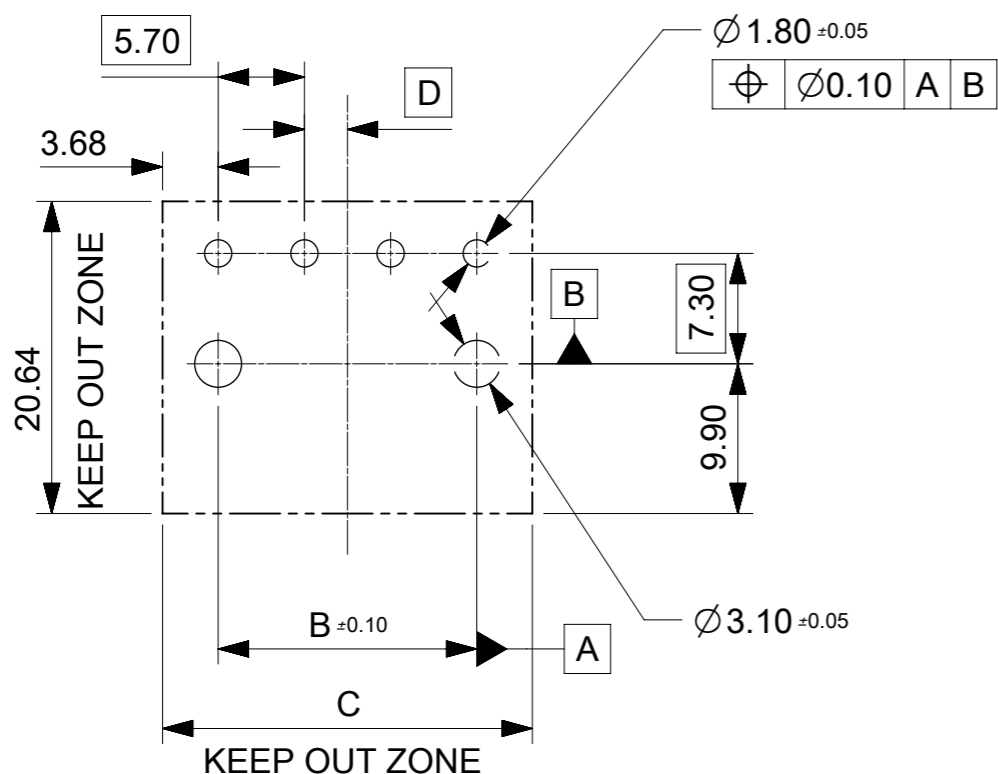
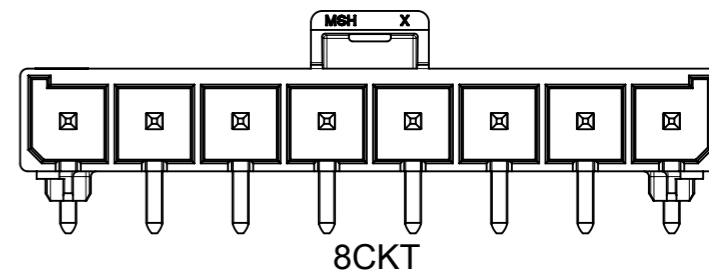
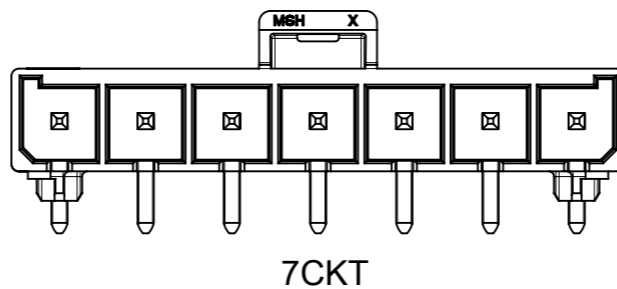
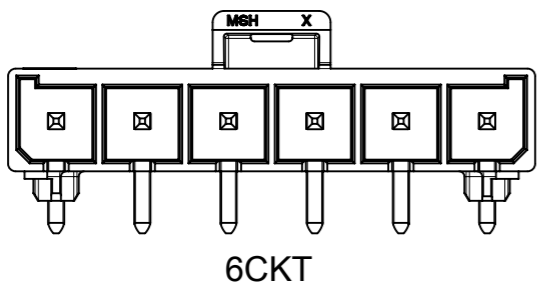
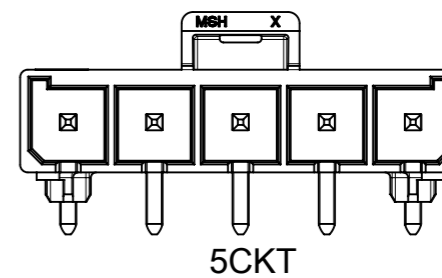
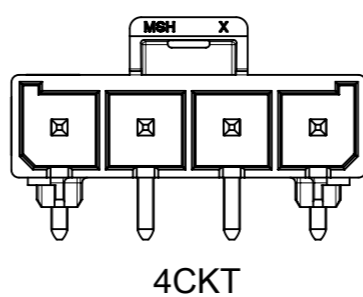
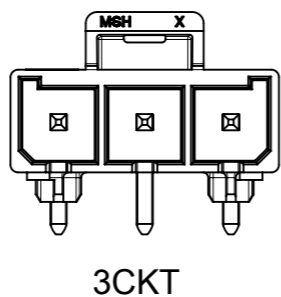
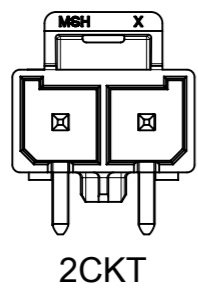


**NOTES:**

1. MATERIAL:  
HOUSING LCP, UL94V-0, GLOW WIRE CAPABLE PER IEC-60335-1 5TH EDITION, COLOR: BLACK .  
TERMINAL: HIGH CONDUCTIVITY COPPER.
2. TERMINAL PLATING:  
(TIN) 1.52 MICROMETER MIN (60 MICROINCH MIN) REFLOWED MATTE TIN OVER  
1.27 MICROMETER MIN (50 MICROINCH MIN) MIN NICKEL OVERALL.  
(15 GOLD) 0.38 MICROMETER MIN (15 MICROINCH MIN) SELECTIVE GOLD ON CONTACT AREA  
WITH 2.54 MICROMETER MIN (100 MICROINCHES MIN) SELECTIVE TIN ON SOLDER AREA  
BOTH OVER 1.27 MICROMETER MIN (50 MICROINCHES MIN) NICKEL OVERALL.  
(30 GOLD) 0.76 MICROMETER MIN (30 MICROINCH MIN) SELECTIVE GOLD ON CONTACT AREA  
WITH 2.54 MICROMETER MIN (100 MICROINCHES MIN) SELECTIVE TIN ON SOLDER AREA  
BOTH OVER 1.27 MICROMETER MIN (50 MICROINCHES MIN) NICKEL OVERALL.
3. PRODUCT SPECIFICATION 1720631000-PS.
4. PACKAGING: TRAY PACKED PER MOLEX SPECIFICATION 2002412000.
5. PART MATES WITH MOLEX PART NUMBER 200456 SERIES.
6. APPLICATION SPECIFICATION: 768232000-AS
7. PARTS CONFORM TO CLASS "B" REQUIREMENTS OF COSMETIC SPECIFICATION PS-45499-002.
8. TO AVOID INTERFERENCE BETWEEN RECEPTACLE AND PCB, HEADER MUST BE PLACED WITHIN 12.00MM MAX FROM EDGE OF PCB

PRE-RELEASE  
REFERENCE  
USE ONLY

SYMBOLS		THIS DRAWING CONTAINS INFORMATION THAT IS PROPRIETARY TO MOLEX ELECTRONIC TECHNOLOGIES, LLC AND SHOULD NOT BE USED WITHOUT WRITTEN PERMISSION		CURRENT REV DESC:		<b>molex</b>	
▽ = 0	mm	SCALE	2:1	EC NO: 628261			
▽ = 0	GENERAL TOLERANCES (UNLESS SPECIFIED)			DRWN: ALUO02		2019/11/28	
▽ = 0	ANGULAR TOL ± 0.5°			CHK'D:		PRODUCT CUSTOMER DRAWING	
▽ = 0	4 PLACES ±			APPR:		DOCUMENT NUMBER	
▽ = 0	3 PLACES ±			INITIAL REVISION:		DOC TYPE DOC PART REVISION	
▽ = 0	2 PLACES ± 0.25			DRWN: YXZHENG		2016/09/22	
▽ = 0	1 PLACE ± 0.35			APPR: YXZHENG		2018/08/06	
▽ = 0	0 PLACES ±			DRAFT WHERE APPLICABLE MUST REMAIN WITHIN DIMENSIONS		2002412000	
▽ = 0	THIRD ANGLE PROJECTION			DRAWING		MATERIAL NUMBER	
▽ = 0	A3-SIZE			SERIES		CUSTOMER	
				200241		SEE CHART	
				GENERAL MARKET		SHEET NUMBER	
				1 OF 3			



PRE-RELEASE  
REFERENCE  
USE ONLY

PCB LAYOUT:  
1.COMPONENT SIDE  
2.RECOMMEND PCB THICKNESS:1.58MM/.062IN TO 2.36MM/.093IN

SYMBOLS		THIS DRAWING CONTAINS INFORMATION THAT IS PROPRIETARY TO MOLEX ELECTRONIC TECHNOLOGIES, LLC AND SHOULD NOT BE USED WITHOUT WRITTEN PERMISSION	
DIMENSION UNITS	SCALE	CURRENT REV DESC:	
$\nabla = 0$	mm	2:1	EC NO: 628261 DRWN: ALUO02 CHK'D: APPR:
$\nabla = 0$	GENERAL TOLERANCES (UNLESS SPECIFIED)		
$\nabla = 0$	ANGULAR TOL $\pm 0.5^\circ$		2019/11/28
$\nabla = 0$	4 PLACES	$\pm$	
$\nabla = 0$	3 PLACES	$\pm$	INITIAL REVISION: DRWN: YXZHENG APPR: YXZHENG
$\nabla = 0$	2 PLACES	$\pm 0.25$	
$\nabla = 0$	1 PLACE	$\pm 0.35$	2016/09/22 2018/08/06
$\nabla = 0$	0 PLACES	$\pm$	
$\nabla = 0$	DRAFT WHERE APPLICABLE MUST REMAIN WITHIN DIMENSIONS		THIRD ANGLE PROJECTION
$\nabla = 0$			DRAWING
		A3-SIZE	SERIES
		200241	MATERIAL NUMBER
		SEE CHART	CUSTOMER
		GENERAL MARKET	DOCUMENT NUMBER
		2002412000	DOC TYPE
		PSD	DOC PART
		000	REVISION
		C1	SHEET NUMBER
		2 OF 3	

DOCUMENT STATUS	RQ	RELEASE DATE

CKT SIZE	RESIN COLER	PART NO.	PLATING	DIM.A	DIM.B	DIM.C	DIM.D	PK SPEC
2	BLACK	2002411212	TIN	12.05	N/A	13.05	2.85	TRAY
3		2002411213		17.75	11.40	18.75	0.00	
4		2002414214		23.45	17.10	24.45	2.85	
5		2002411215		29.15	22.80	30.15	0.00	
6		2002411216		34.85	28.50	35.85	2.85	
7		2002411217		40.55	30.20	41.55	0.00	
8		2002411218		46.25	39.90	47.25	2.85	
2		2002411222		12.05	N/A	13.05	2.85	
3		2002411223	17.75	11.40	18.75	0.00		
4		2002411224	23.45	17.10	24.45	2.85		
5		2002411225	29.15	22.80	30.15	0.00		
6		2002411226	34.85	28.50	35.85	2.85		
7		2002411227	40.55	34.20	41.55	0.00		
8		2002411228	46.25	39.90	47.25	2.85		
2		2002411232	12.05	N/A	13.05	2.85		
3		2002411233	17.75	11.40	18.75	0.00		
4	2002411234	23.45	17.10	24.45	2.85			
5	2002411235	29.15	22.80	30.15	0.00			
6	2002411236	34.85	28.50	35.85	2.85			
7	2002411237	40.55	34.20	41.55	0.00			
8	2002411238	46.25	39.90	47.25	2.85			

CKT SIZE	RESIN COLER	PART NO.	PLATING	DIM.A	DIM.B	DIM.C	DIM.D	PK SPEC
* 2	BLACK	2002411912	TIN	12.05	N/A	13.05	2.85	TAPE&REEL
* 3		2002411913		17.75	11.40	18.75	0.00	
* 4		2002414914		23.45	17.10	24.45	2.85	
* 5		2002411915		29.15	22.80	30.15	0.00	
* 6		2002411916		34.85	28.50	35.85	2.85	
* 7		2002411917		40.55	30.20	41.55	0.00	
* 8		2002411918		46.25	39.90	47.25	2.85	
* 2		2002411922		12.05	N/A	13.05	2.85	
* 3		2002411923	17.75	11.40	18.75	0.00		
* 4		2002411924	23.45	17.10	24.45	2.85		
* 5		2002411925	29.15	22.80	30.15	0.00		
* 6		2002411926	34.85	28.50	35.85	2.85		
* 7		2002411927	40.55	34.20	41.55	0.00		
* 8		2002411928	46.25	39.90	47.25	2.85		
* 2		2002411932	12.05	N/A	13.05	2.85		
* 3		2002411933	17.75	11.40	18.75	0.00		
* 4		2002411934	23.45	17.10	24.45	2.85		
* 5		2002411935	29.15	22.80	30.15	0.00		
* 6		2002411936	34.85	28.50	35.85	2.85		
* 7		2002411937	40.55	34.20	41.55	0.00		
* 8		2002411938	46.25	39.90	47.25	2.85		

\* DESIGNATES PART NOT RELEASED  
CONTACT FACTORY FOR AVAILABILITY.

PENDING APPROVAL

<b>SYMBOLS</b> = 0 = 0 = 0 = 0 = 0 = 0 = 0 = 0 = 0	THIS DRAWING CONTAINS INFORMATION THAT IS PROPRIETARY TO MOLEX ELECTRONIC TECHNOLOGIES, LLC AND SHOULD NOT BE USED WITHOUT WRITTEN PERMISSION DIMENSION UNITS: <b>mm</b> SCALE: <b>1:1</b>	CURRENT REV DESC:  EC NO: 628261 DRWN: ALUO02    2019/11/28 CHK'D: APPR:  INITIAL REVISION: DRWN: YXZHENG    2016/09/22 APPR: YXZHENG    2018/08/06	<b>molex</b>		
	GENERAL TOLERANCES (UNLESS SPECIFIED) ANGULAR TOL ± 0.5°		MEGA-FIT S/R HEADER ASSEMBLY(R/A)		
	4 PLACES ± 3 PLACES ± 2 PLACES ± 0.25 1 PLACE ± 0.35 0 PLACES ±		PRODUCT CUSTOMER DRAWING		
	DRAFT WHERE APPLICABLE MUST REMAIN WITHIN DIMENSIONS THIRD ANGLE PROJECTION 		DOCUMENT NUMBER: <b>2002412000</b> DOC TYPE: PSD    DOC PART: 000    REVISION: C1	GENERAL MARKET	
	DRAWING: <b>A3-SIZE</b> SERIES: <b>200241</b> MATERIAL NUMBER:    CUSTOMER:	SHEET NUMBER: <b>3 OF 3</b>			

DOCUMENT STATUS	RQ	RELEASE DATE
-----------------	----	--------------