

CABLE SPECIFICATION:

CONDUCTOR:

MATERIAL: BARE COPPER

SECTION: 22AWG/0.14mm²

INSULATION 2.23 ±0.12mm:

COLOR: BLUE, WHITE

INSULATION 1.27 ±0.05mm:

COLOR: RED, BLACK

JACKET:

COLOR: GRAY

COMPOUND: PVC

DIAMETER: 7.239 ±0.12mm

TEMPERATURE RANGE:

-20°C TO +80°C

MAX. OPERATING VOLTAGE: 300V

WIRING DIAGRAM



A2 PART No. MATRIX

D N D 0 1 A - M X X X X

UNITS:
M = METERS

LENGTH
EXAMPLES:
005 = 0.5 m
010 = 1 m
050 = 5 m
100 = 10 m
150 = 15 m

OPTIONS

H= 2x ID CARRIER

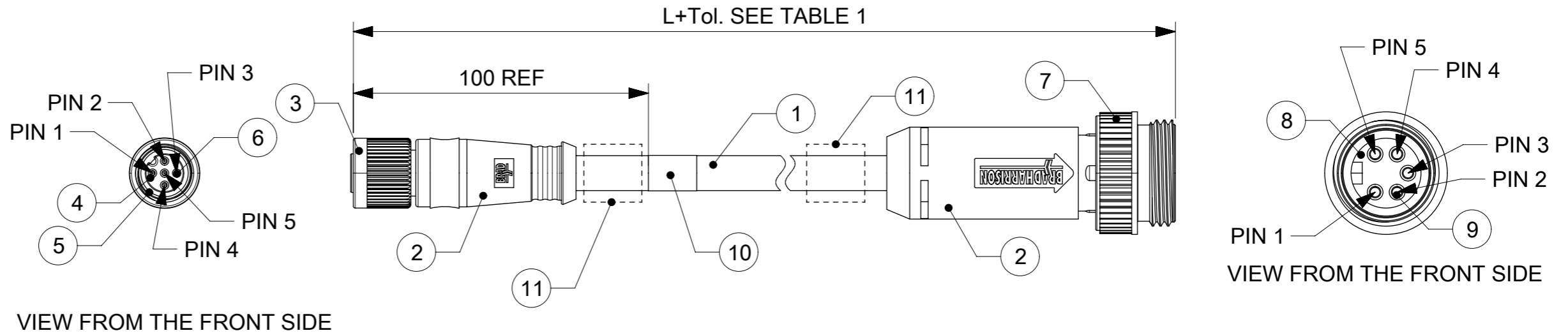


TABLE 1

MOLEX PN	ENGINEERING No	L+Tol. [mm]
1300390155	DND21A-M005	500 +19/-0
1300390157	DND21A-M010	1000 +56/-0
1300390159	DND21A-M020	2000 +89/-0
1300390166	DND21A-M050	5000 +165/-0
1300390169	DND21A-M100	10000 +317/-0
1300390518	DND21A-M150	15000 +610/-0
1300390170	DND21A-M200	20000 +610/-0
1300390688	DND21A-M005H	500 +19/-0
1300390689	DND21A-M010H	1000 +56/-0
1300390690	DND21A-M020H	2000 +89/-0
1300390691	DND21A-M050H	5000 +165/-0
1300390692	DND21A-M100H	10000 +317/-0
1300390693	DND21A-M200H	20000 +610/-0
1300390694	DND21A-M150H	15000 +610/-0
1300390695	DND21A-M030H	3000 +89/-0

ITEM	QTY.	DESCRIPTION	MATERIAL	FINISH
11	2	ID CARRIER (SEE MATRIX)	PVC	-
10	1	LABEL YE	VINYL	-
9	5	CONTACT MA	BRASS	Ni-PLATED
8	1	INSERT A-SIZE MA 5P GY	PVC	-
7	1	COUPLING NUT MA A-SIZE	ZINK ALLOY	-
6	5	CONTACT FE		
5	1	GASKET RD	FPM	-
4	1	INSERT M12 FE 5P MICRO BK	ZYTEL	-
3	1	COUPLING NUT FE M12 BK	ELECTROPHORETIC	-
2	-	MOULDING MATERIAL GY	TPU	
1	-	DROP CABLE 4/22AWG GY	PVC	-

RELEASE STATUS P1 RELEASE DATE 28.11.2017 07:34:25

THIS DRAWING CONTAINS INFORMATION THAT IS PROPRIETARY TO MOLEX ELECTRONIC TECHNOLOGIES, LLC AND SHOULD NOT BE USED WITHOUT WRITTEN PERMISSION

EC NO: 168670 DRWN: WNAWROT CHK'D: APPR: MIWASIECZKO	2017/11/24	GENERAL TOLERANCES (UNLESS SPECIFIED) ANGULAR TOL ± ° 4 PLACES ± 3 PLACES ± 2 PLACES ± 1 PLACE ± 0 PLACES ± DRAFT WHERE APPLICABLE MUST REMAIN WITHIN DIMENSIONS	DIMENSION UNITS	SCALE				
	2017/11/28		mm	1:1				
			DRWN BY	DATE		AKONDRACIUK 2016/06/20		
			CHK'D BY	DATE				
			APPR BY	DATE	PRODUCT CUSTOMER DRAWING			
			MIWASIECZKO	2016/09/09	SERIES	MATERIAL NUMBER	CUSTOMER	
			DRAWING SIZE	THIRD ANGLE PROJECTION	130039	SEE TABLE 1		
A2	REV		A3		DOCUMENT NUMBER	DOC TYPE	DOC PART	SHEET NUMBER
					1300390155	PSD	00P	1 OF 1

6

5

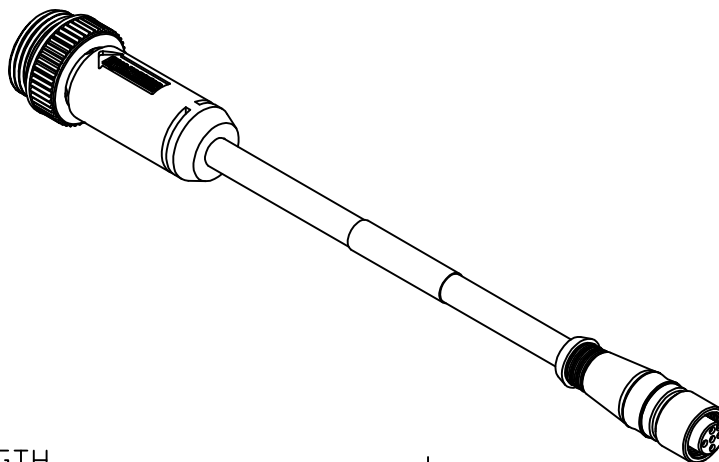
4

3

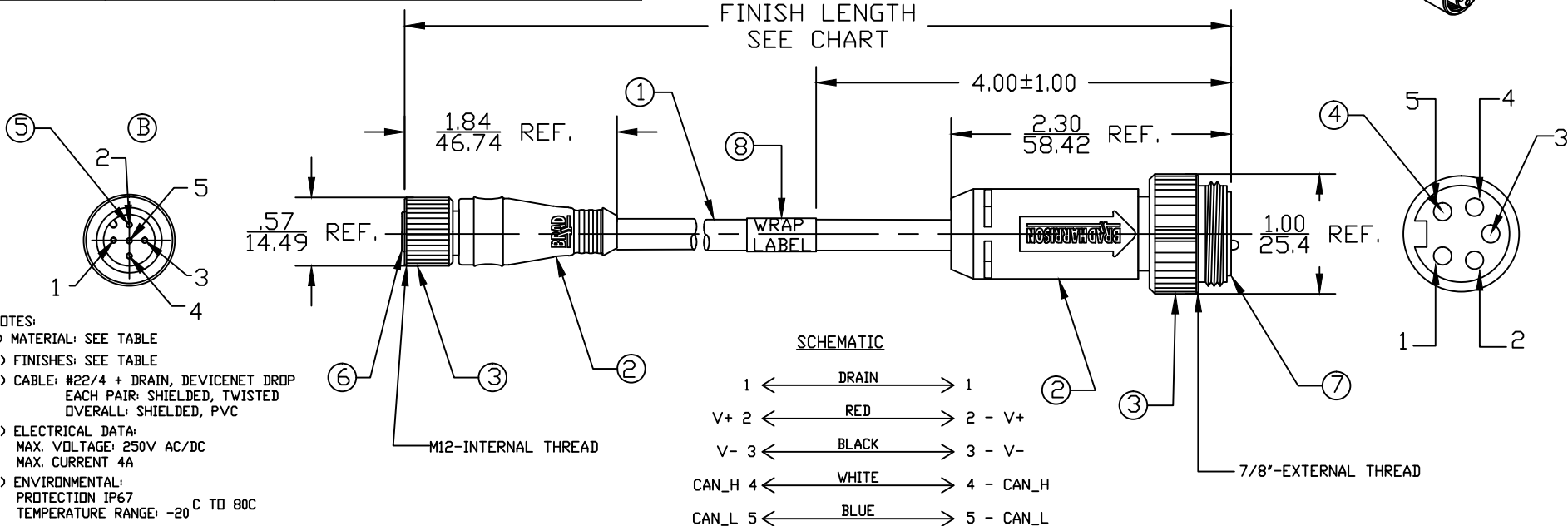
2

1

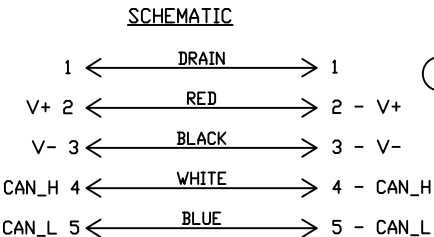
MATERIAL NUMBER	ENGINEERING NUMBER	FINISHED LENGTH
1300390154	DND21A-M003	.98' +.75" -0 [3M +19.1 -0]
1300390155	DND21A-M005	1.64' +1.75" -0 [5M +44.5 -0]
1300390157	DND21A-M010	3.28' +2.19" -0 [10M +55.6 -0]
1300390159	DND21A-M020	6.56' +3.50" -0 [2.0M +88.9 -0]
1300390164	DND21A-M030	9.84' +3.50" -0 [3.0M +88.9 -0]
1300390165	DND21A-M040	13.12' +6.50" -0 [4.0M +165.1 -0]
1300390166	DND21A-M050	16.40' +6.50" -0 [5.0M +165.1 -0]
1300390167	DND21A-M060	19.69' +6.50" -0 [6.0M +165.1 -0]
1300390032	DND21A-M080	26.25' +12.50" -0 [8.0M +317.5 -0]
1300390169	DND21A-M100	32.81' +12.50" -0 [10.0M +317.5 -0]
1300390518	DND21A-M150	49.21' +24.50" -0 [15.0M +622.3 -0]
1300390170	DND21A-M200	65.62' +24.50" -0 [20.0M +622.3 -0]



FINISH LENGTH
SEE CHART



- NOTES:
- 1) MATERIAL: SEE TABLE
 - 2) FINISHES: SEE TABLE
 - 3) CABLE: #22/4 + DRAIN, DEVICENET DROP EACH PAIR: SHIELDED, TWISTED OVERALL: SHIELDED, PVC
 - 4) ELECTRICAL DATA: MAX. VOLTAGE: 250V AC/DC MAX. CURRENT 4A
 - 5) ENVIRONMENTAL: PROTECTION IP67 TEMPERATURE RANGE: -20°C TO 80°C
 - 6) WRAP LABEL IS MARKED WITH P/N, DATE CODE, VOLTAGE & AMPERAGE.
 - 7) ASSEMBLY IS RoHS COMPLIANT.



ITEM	QTY.	DESCRIPTION	MATERIAL	FINISH
8	1	LABEL	PLASTIC FILM	BLACK/YELLOW
7	1	INSERT(MID)	PVC	GREY
6	1	INSERT(MICRO)	NYLON	BLACK
5	5	PIN CONTACT	COPPER ALLOY	GOLD PLATED
4	5	SOCKET CONTACT	COPPER ALLOY	GOLD PLATED
3	2	COUPLING NUT	ZINC DIE-CAST	BLACK
2	1	OVERMOLD	PVC	GRAY
1	1	DEVICENET DROP CABLE	PVC JACKET	GRAY

UPDATED PIN NUMBERS EC NO: IFC2016-0705 DRWN: GGUSTAFS 2015/11/06 CHKD: MZELIN 2015/12/22 APPR: BWOODMAN 2010/01/20	QUALITY SYMBOLS ▽=0 ▽=0
---	-------------------------------

	GENERAL TOLERANCES (UNLESS SPECIFIED)	
	mm	INCH
4 PLACES	±---	±---
3 PLACES	±---	±0.05
2 PLACES	±0.13	±0.010
1 PLACE	±0.25	±0.020

ANGULAR ±1/2°

DRAFT WHERE APPLICABLE MUST REMAIN WITHIN DIMENSIONS

DIMENSION STYLE IN/MM	
DRAWN BY	DATE
CHECKED BY	DATE
APPROVED BY	DATE
MATERIAL NO.	

SCALE 1:1	DESIGN UNITS INCH	THIRD ANGLE PROJECTION
TITLE MINRO/MIN CHANGE D-NET 5P MA/FE ST/ST DROP 22/4AWG +DRAIN GREY PVC		
MOLEX INCORPORATED		
DOCUMENT NO. SD-130039-020		SHEET NO. 1 OF 1
THIS DRAWING CONTAINS INFORMATION THAT IS PROPRIETARY TO MOLEX INCORPORATED AND SHOULD NOT BE USED WITHOUT WRITTEN PERMISSION		

6

5

4

3

2

1