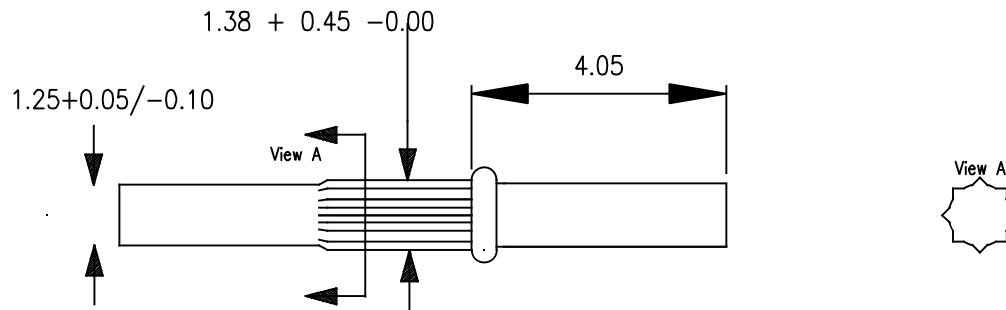


COPYRIGHT IN THIS DRAWING BELONGS TO VERO TECHNOLOGIES LTD. IT MUST NOT BE COPIED OR DISCLOSED TO THIRD PARTIES WITHOUT WRITTEN PERMISSION FROM VERO TECHNOLOGIES LTD.

WARNING: THIS DRAWING HAS BEEN CREATED AND STORED ELECTRONICALLY - DO NOT SCALE. THIS COPY MAY NOT BE UP-TO-DATE. IF IN DOUBT - ASK.



NOTE 1 :- For use in finished board holes measuring 1.32 ± 0.010 per industry standard

Note 2:- Area defined by 4.05 dimension may or may not have spline serrations depending on tool settings. Serrations or the lack of in this area have no impact on the function of the pin.

This drawing not to scale

	VERO TECHNOLOGIES Ltd Unit 25, Solent Ind. Est., Hedge End, Southampton, Hants, SO30 2FY, UK. Tel +44 (0) 1489 776 930 B/A	TOLERANCES UNLESS OTHERWISE STATED OVER 1 METRE ± 0.5mm 0.50 ± 0.3 0.30 ± 0.3 0.10 ± 0.1 0.05 ± 0.1 ALL DIMENSIONS IN MILLIMETRES	PROJECTION	TITLE Half Pin to fit 1.32 dia. hole in packs of 1,000	1 DRG E.C.N. ISSUE	DESCRIPTION Released for issue to customers	DATE 8/2/15
			MATERIAL Brass Wire	FINISH Plating to BS EN 1872 Dull Tin	CHECKED J.C.M.	DRAWN D.S.	DRG No 18-0219 customer