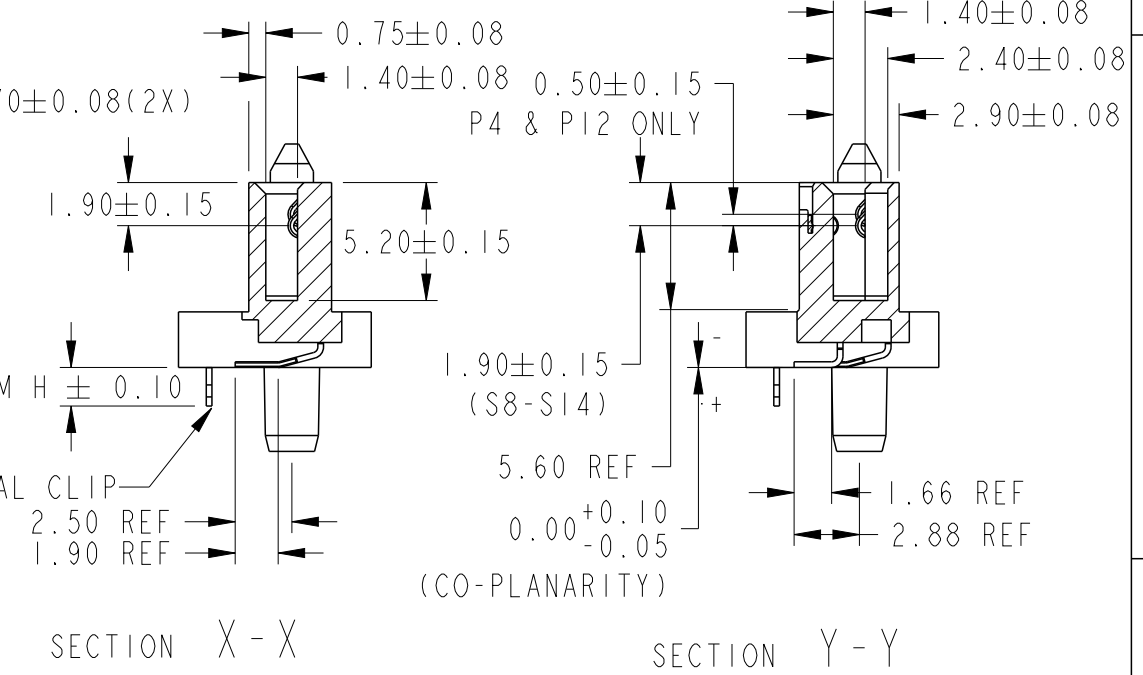
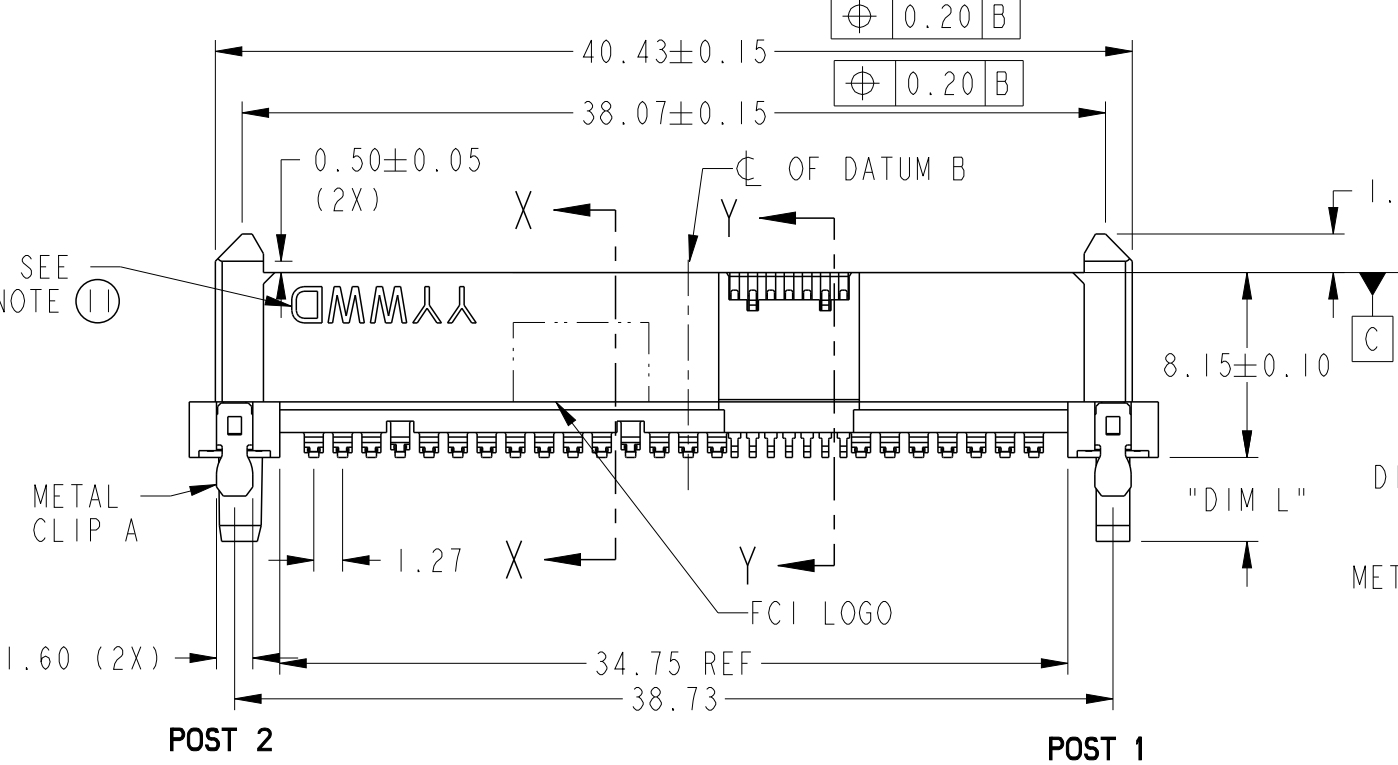
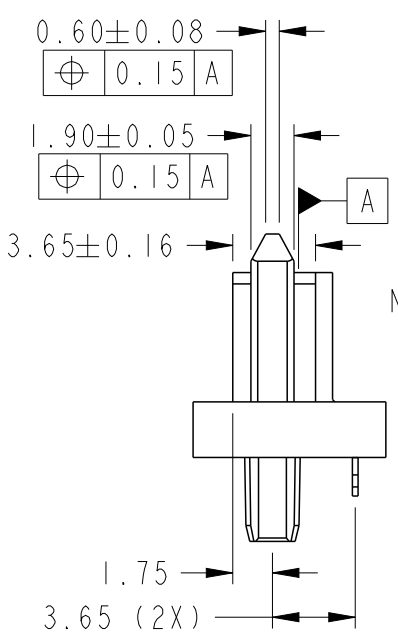
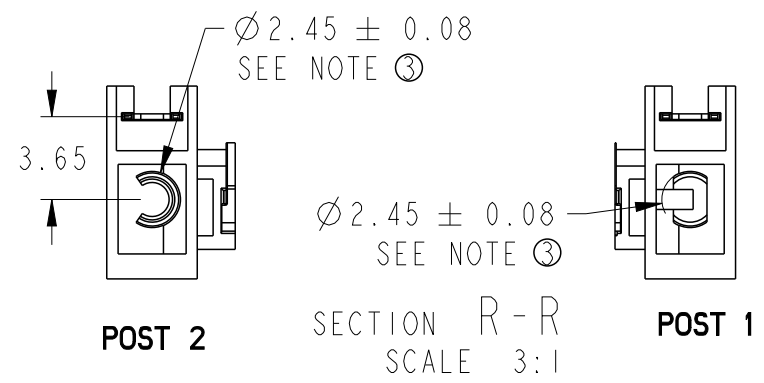
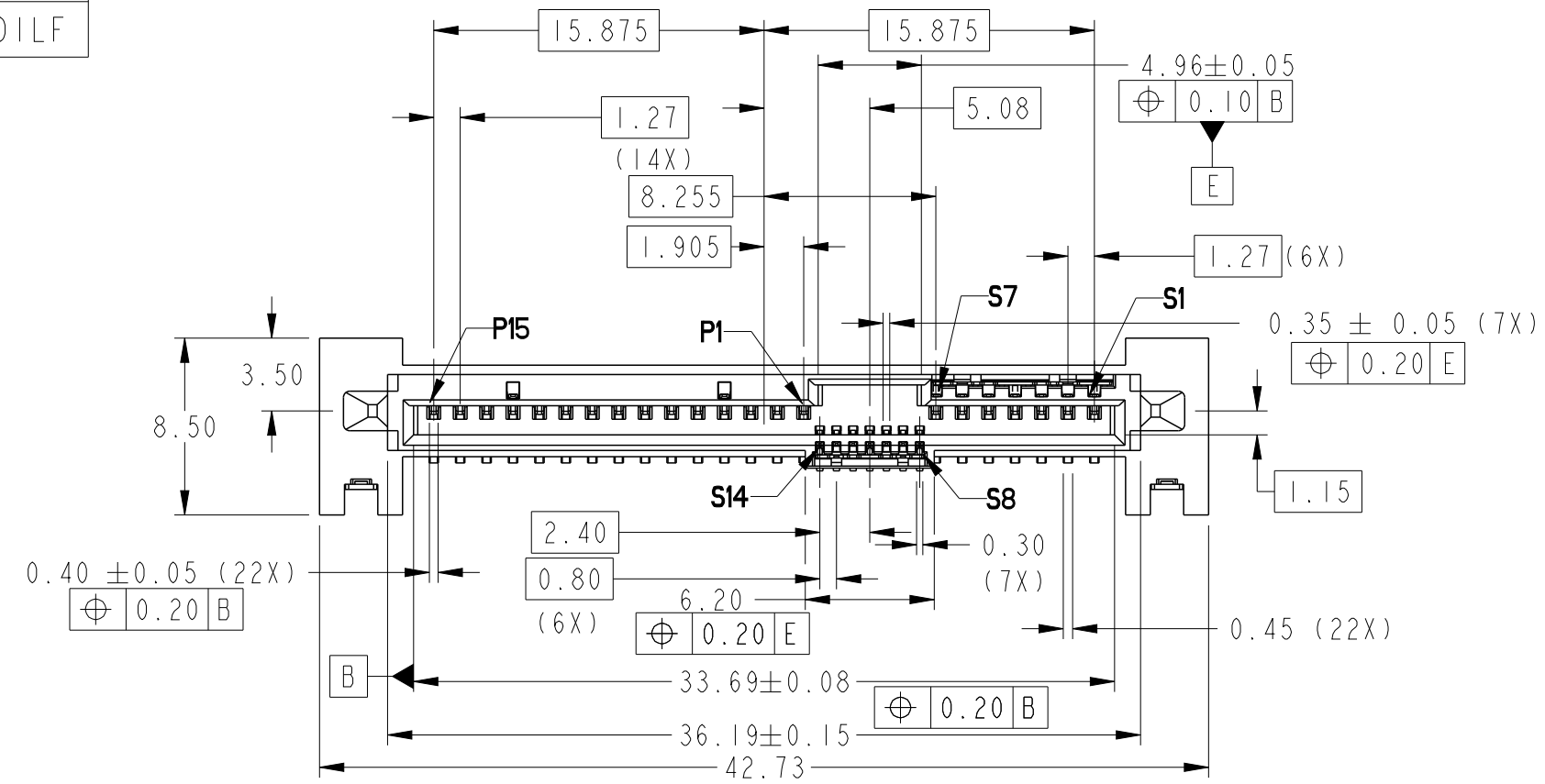


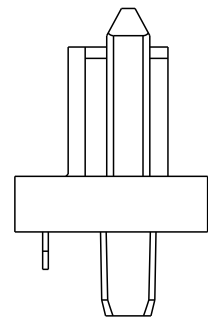
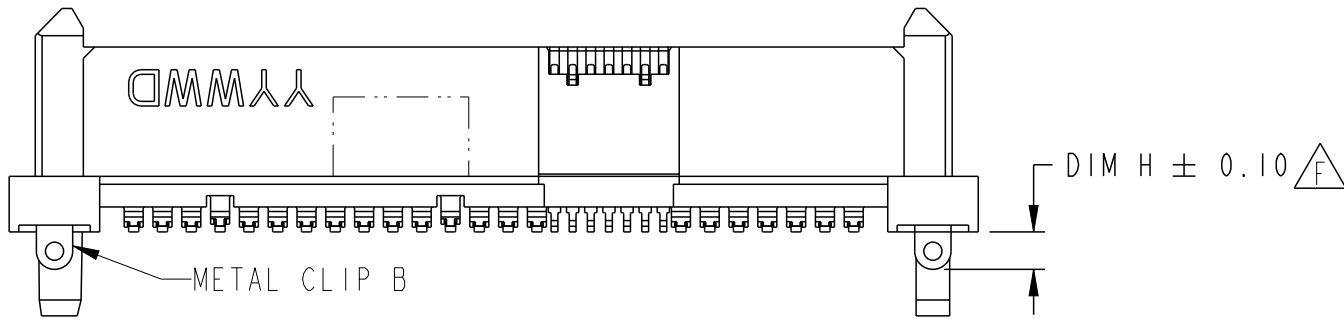
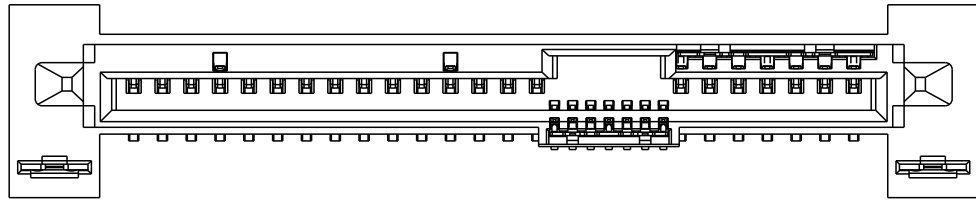
PRODUCT NUMBER
10142501-001LF



Amphenol FCI
© 2016 AFCI

| | | | | | | | | | | |
|---------------------------------------|---------------------|-------|---------------|------------|-------------------------|----|------------------------|---------------|--------------|----------|
| spec ref | - | dr | Noorhazlinda, | 2017/08/23 | projection | mm | size | A3 | scale | 3:1 |
| tolerance std | ISO 406 ISO 1101 | eng | Wai-Bin Cho | 2019/06/13 | | | ecn no | ELX-M-33877-1 | rel level | Released |
| TOLERANCES UNLESS OTHERWISE SPECIFIED | | chr | - | 2019/06/21 | | | | | | |
| surface | linear | 0.X | ± | | 24G SAS RECEPTACLE | | dwg no | 10142501 | rev | F |
| | angular | 0.XXX | ± | | WIDE BASE SMT TYPE ASSY | | | | | |
| | | 0° | ±2° | | cat. no. | - | Product - Customer Drw | | sheet 1 of 4 | |

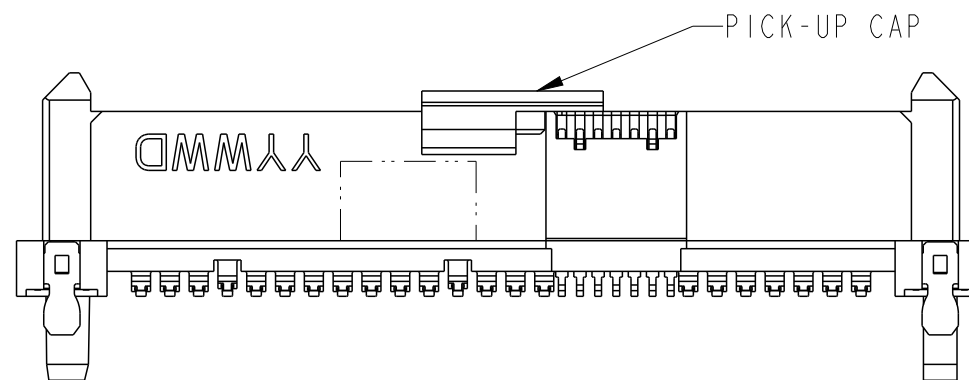
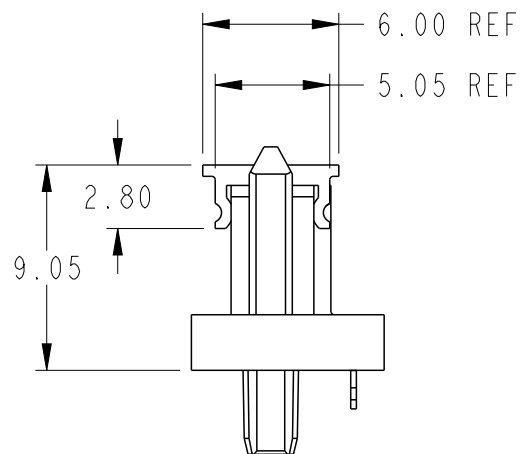
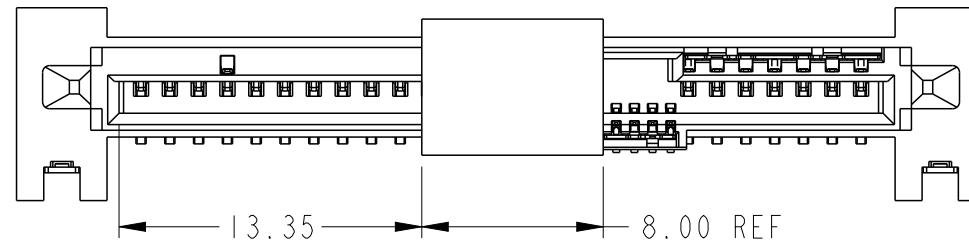
PRODUCT NUMBER
10142501-002LF



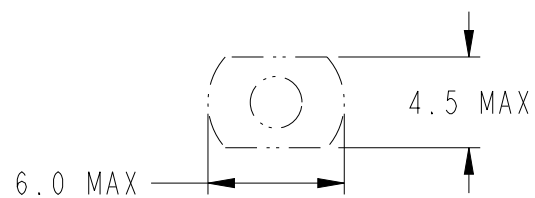
NOTE:
1. REFER TO SHEET 1 FOR UNSPECIFIED DIMENSION.

| | | | | | | | | | | |
|--------------------------------------|--|---------------------------------------|--------------|------------|--------------|-------------|-------------------------|----------------|------------------------|---------------|
| spec ref - | | dr | Noorhazinda, | 2017/08/23 | projection | mm | size | A3 | scale | 3:1 |
| tolerance std ISO 406 ISO 1101 | | TOLERANCES UNLESS OTHERWISE SPECIFIED | | | eng | Wai-Bin Cho | 2019/06/13 | ecn no | | ELX-M-33877-1 |
| surface | | linear | 0.X | ±- | chr | - | - | product family | | SAS |
| ISO 1302 | | | 0.XX | ±.20 | | | | rel level | | Released |
| | | angular | 0° | ±2° | appr | | Koon-Poh Tay | 2019/06/21 | product family | |
| | | | | | Amphenol FCI | | 24G SAS RECEPTACLE | | dwg no | |
| | | | | | | | WIDE BASE SMT TYPE ASSY | | 10142501 | |
| | | | | | cat. no. | | - | | Product - Customer Drw | |
| | | | | | | | | | sheet 2 of 4 | |
| | | | | | | | | | rev | |
| | | | | | | | | | F | |

PRODUCT NUMBER
SEE TABLE



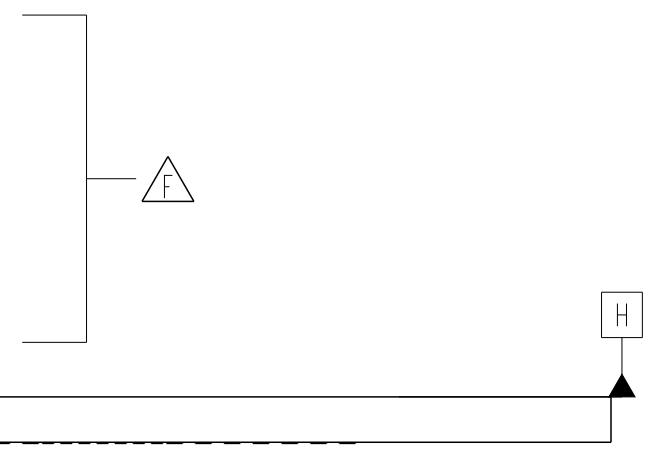
PART WITH PICK-UP CAP, SEE NOTE 5



RECOMMENDED SUCTION HEAD SIZE

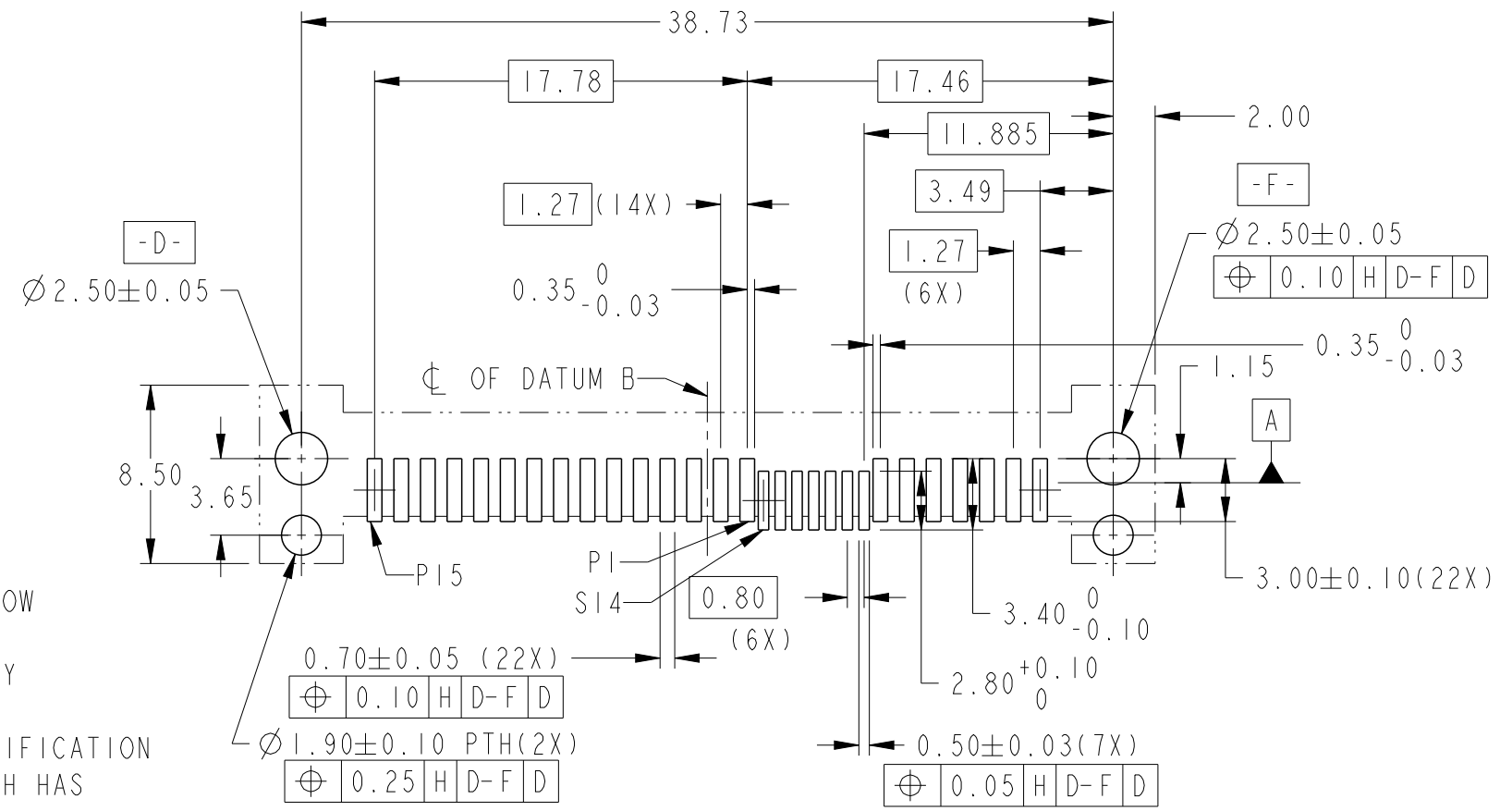
| | | | | | | | | | | | | |
|---------------------|---------------------------------------|------|------|---------------------|----------------|---|----------------|--------------------|-----------|-----------|---------------|----------|
| spec ref | - | | | dr | Noorhazelinda, | 2017/08/23 | projection | mm | size | A3 | scale | 3:1 |
| tolerance std | TOLERANCES UNLESS OTHERWISE SPECIFIED | | | eng | Wai-Bin Cho | 2019/06/13 | | | ecn no | | ELX-M-33877-1 | |
| ISO 406 ISO 1101 | | | | chr | - | - | | | rel level | | Released | |
| surface | linear | 0.X | ±- | appr | Koon-Poh Tay | 2019/06/21 | product family | | SAS | rel level | Released | |
| | | 0.XX | ±.20 | Amphenol FCI | | 24G SAS RECEPTACLE WIDE BASE SMT TYPE ASSY | | dwg no 10142501 | | rev F | | |
| | angular | 0° | ±2° | | | | | | | | | cat. no. |
| ISO 1302 | | | | | | | | | | | | |

| PRODUCT NO | DIM L | DIM H | TYPE OF CLIP | RECOMMENDED P.C. BOARD THICKNESS | PICK-UP CAP | PACKAGING |
|--------------------|-------|-------|--------------|----------------------------------|-------------|-------------|
| 10142501-001LF | 3.7 | 1.7 | METAL CLIP A | 4.57mm (0.180") | NO | TRAY |
| 10142501-001CLF | | | | | YES | |
| 10142501-001C-TRLF | | | | | YES | TAPE & REEL |
| 10142501-002LF | | | METAL CLIP B | | NO | TRAY |
| 10142501-002CLF | | | | | YES | |
| 10142501-002C-TRLF | | | | | YES | TAPE & REEL |



NOTES:

1. MATERIAL:
 - 1) HOUSING: HIGH TEMP TERMOPLASTIC, UL 94V-0
COLOR : BLACK
 - 2) TERMINAL: COPPER ALLOY
 - 3) HOLD DOWN: COPPER ALLOY
2. FINISH:
 - 1) TERMINAL: 30μ" Au PLATING (CONTACT POINT)
OVER 50μ" NICKEL
 - 2) SOLDER TAIL: 50μ" MIN Sn OVER 50μ" MIN NICKEL
 - 3) HOLD DOWN: 50μ" MIN Sn OVER 50μ" MIN NICKEL
3. THE DIM. IS MEASURED AT P.C. BOARD SITTING PLANE(DATUM G)
4. PART WITH PICK-UP CAP, P/N XXXXXXXX-XXXCLF
5. THE STD PACKAGING IS IN TRAY
6. THE TAPE & REEL PACKAGING, SUFFIX "-TR" ADDED AFTER PRODUCT NUMBER (E.G. XXXXXXXX-XXXC-TRLF)
7. THE HOUSING WILL WITHSTAND EXPOSURE TO 260°C PEAK TEMPERATURE FOR 10 SECONDS IN A CONVECTION, INFRA-RED OR VAPOR PHASE REFLOW OVEN.
8. THIS PRODUCT MEETS EUROPEAN UNION DIRECTIVES AND OTHER COUNTRY REGULATIONS AS DESCRIBED IN GS-47-0004.
9. PART NUMBERS ENDING IN "LF" MEANS FOR NOTE 8 LEAD FREE IDENTIFICATION
10. A $\triangle F$ SYMBOL WILL BE NEXT TO ANY DIMENSION, VIEW, OR NOTE WHICH HAS BEEN MODIFIED WITH THE CURRENT DRAWING REVISION.
11. DATE CODE LOCATION. DATE CODE NO.YYWW (E.G.14225).
12. CORING AT NON FUNCTIONAL AREAS ARE SUBJECT TO CHANGE WITHOUT NOTICES.



RECOMMENDED PCB LAYOUT FRONT VIEW

Amphenol FCI

© 2016 AFCI

| | | | | | | | | | | |
|---------------------------------------|---------------------|------|---------------|------------|---|-----|------------------------|---------------|--------------|----------|
| spec ref | - | dr | Noorhazlinda, | 2017/08/23 | projection | mm | size | A3 | scale | 3:1 |
| tolerance std | ISO 406 ISO 1101 | eng | Wai-Bin Cho | 2019/06/13 | | ← → | ecn no | ELX-M-33877-1 | rel level | Released |
| TOLERANCES UNLESS OTHERWISE SPECIFIED | | chr | - | - | | | | | | |
| surface | linear | appr | Koon-Poh Tay | 2019/06/21 | | | | | | |
| | angular | | | | product family | SAS | | | | |
| | | | | | 24G SAS RECEPTACLE WIDE BASE SMT TYPE ASSY | | dwg no | 10142501 | rev | F |
| | | | | | cat. no. | - | Product - Customer Drw | | sheet 4 of 4 | |