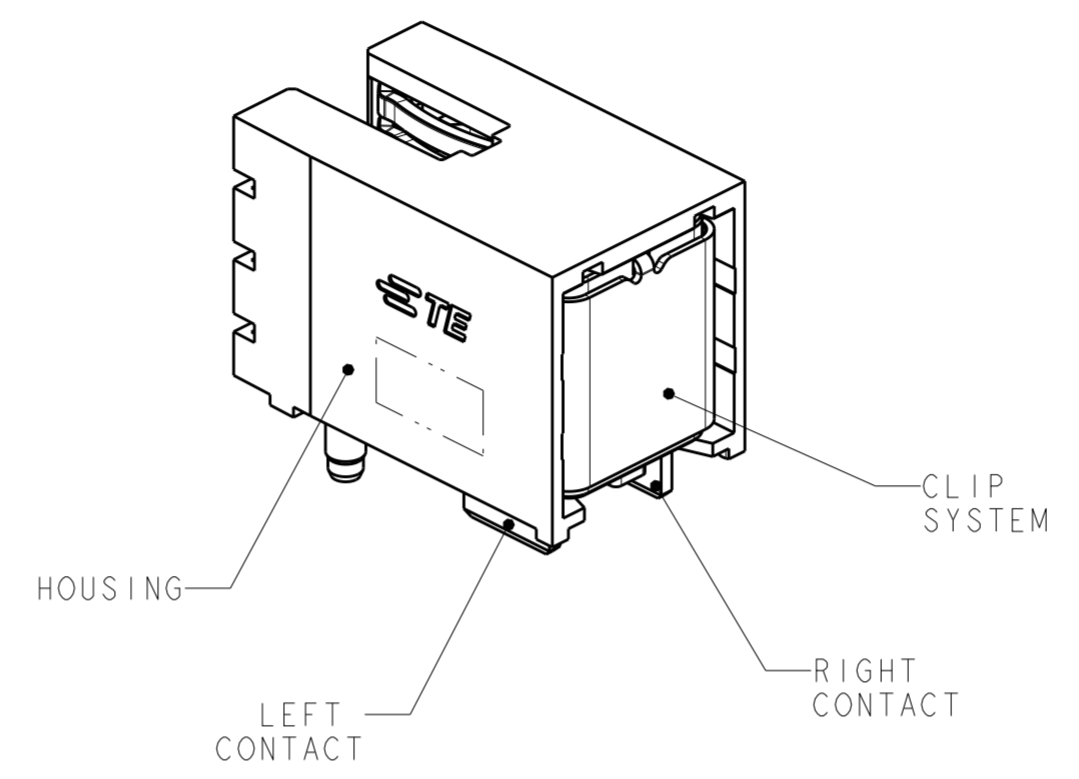
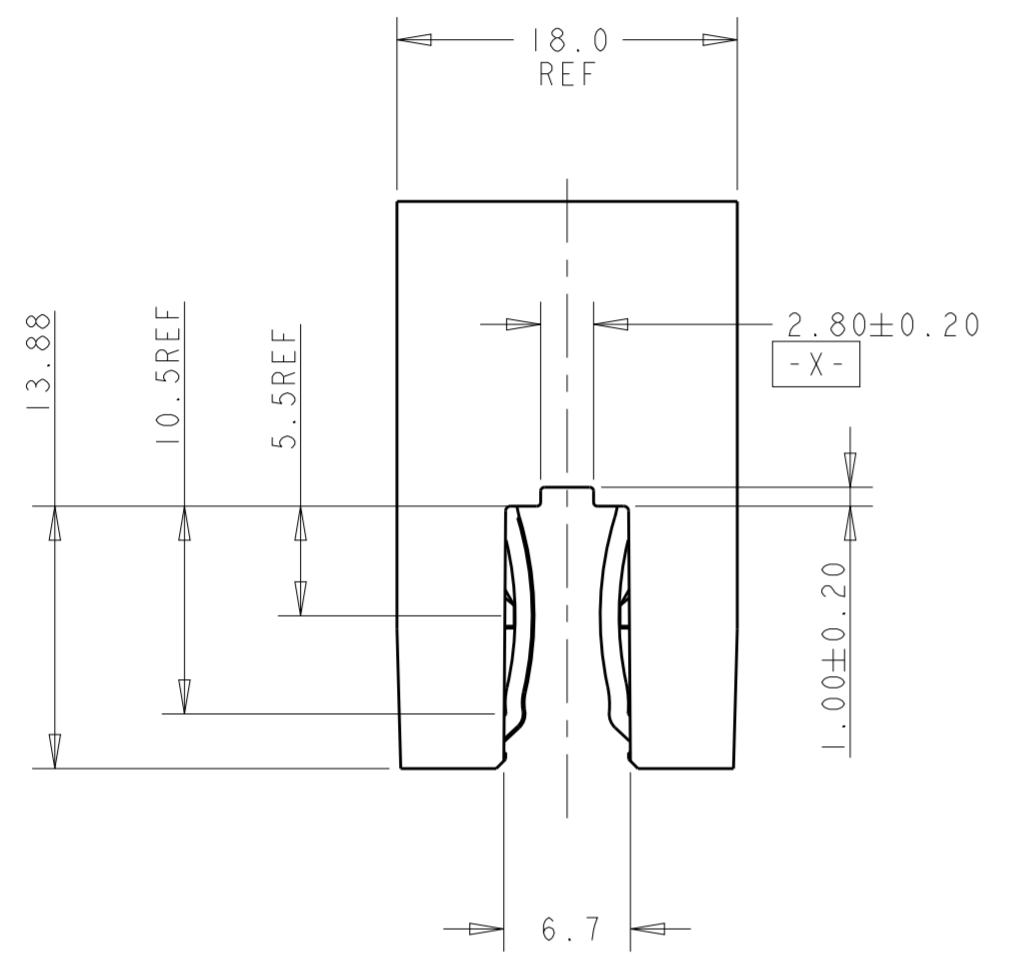
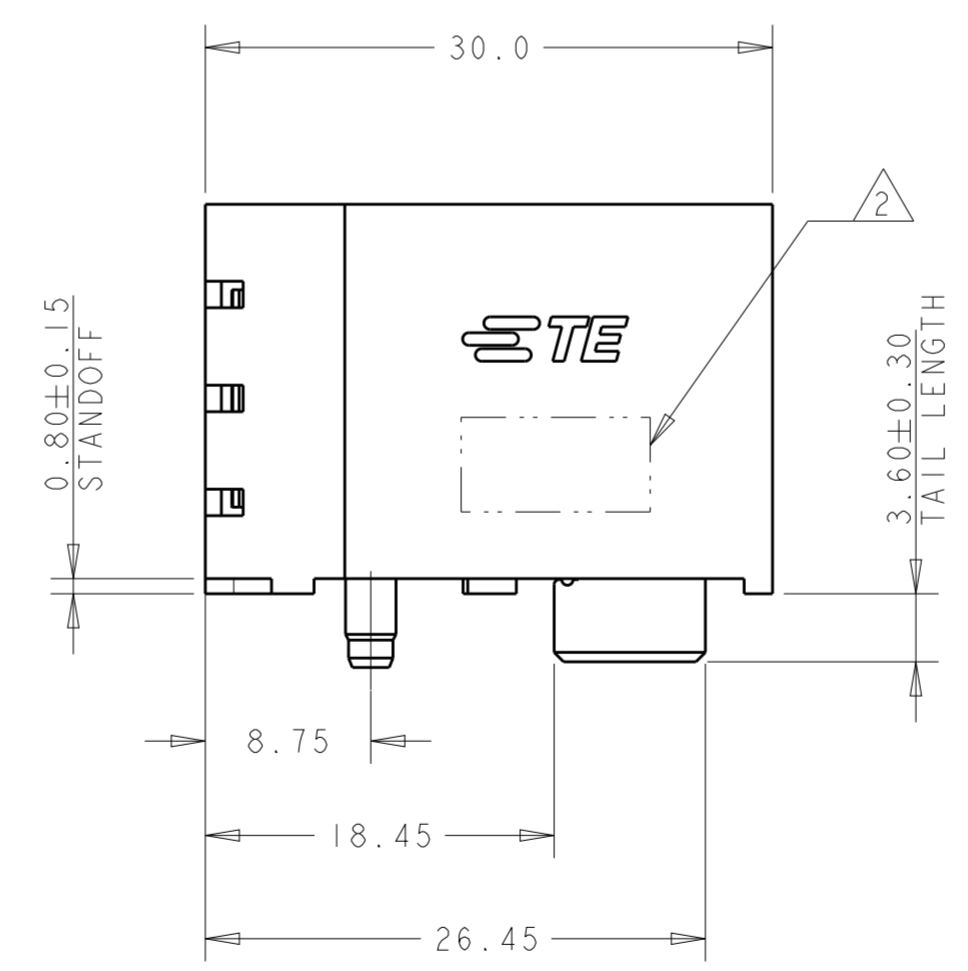
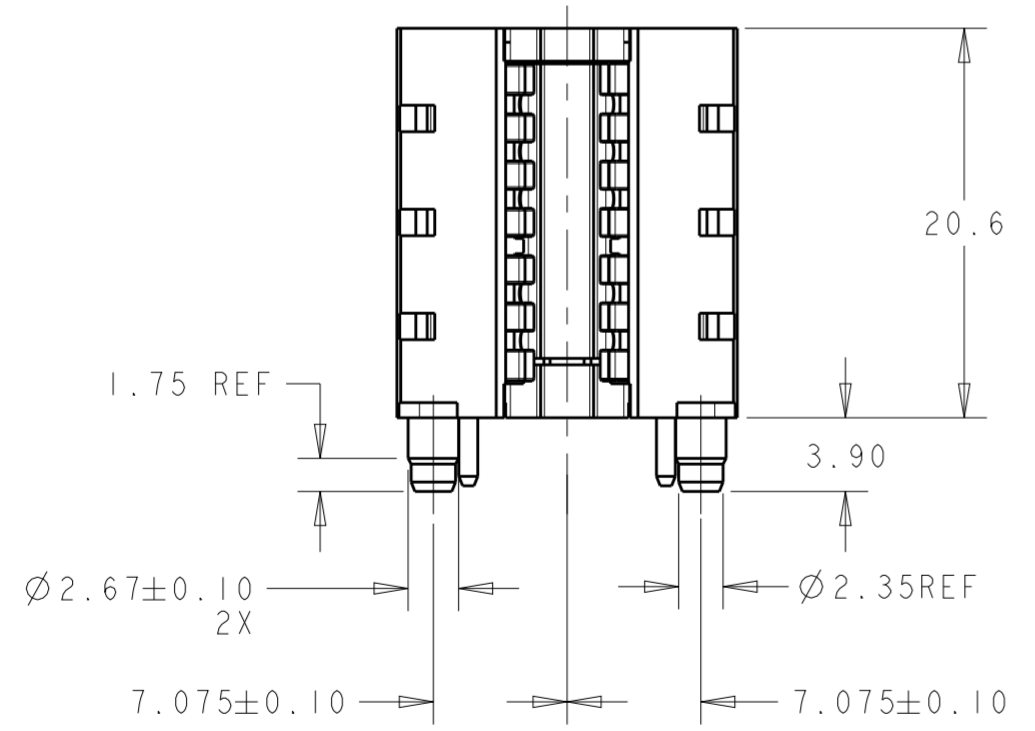


THIS DRAWING IS UNPUBLISHED. RELEASED FOR PUBLICATION
 © COPYRIGHT BY - TE CONNECTIVITY ALL RIGHTS RESERVED.

REVISIONS				
P	LTR	DESCRIPTION	DATE	APVD
1		INITIAL	11OCT2018	ML SZ
7		REMOVE RIB FEATURE PER CUSTOMER REQUEST	29JAN2019	ML SZ



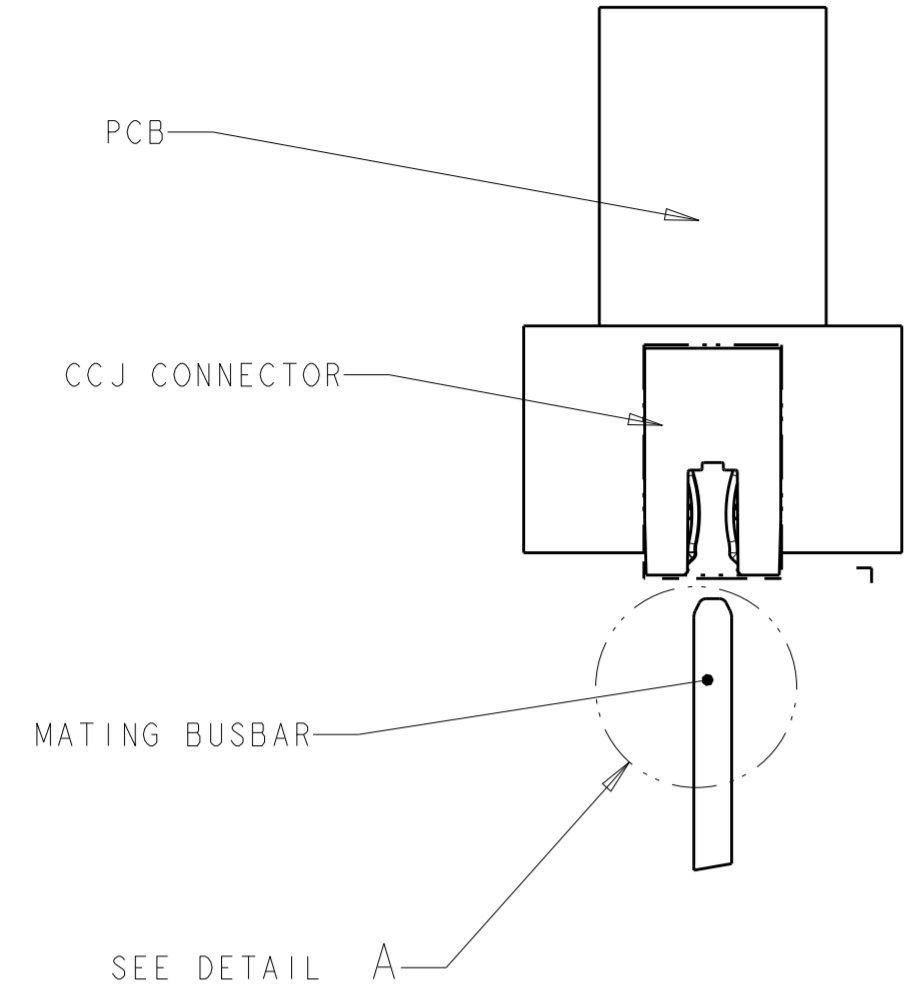
- NOTES:
- MATERIAL:
 HOUSING: THERMOPLASTIC GLASS PREINFORCED
 COLOR: BLACK, UL94V-0
 CONTACT: HIGH CONDUCTIVITY COPPER ALLOY
 - AREA FOR DATE CODE AND P/N
 - FINISH:
 CONTACT AREA: NOBLE METAL OVER NICKEL.
 SOLDERING TAIL: MATTE TIN OVER NICKEL.
 - RECOMMENDED MATING BUSBAR BOARD:
 MATERIAL: COPPER ALLOY C10100/C10200/C11000
 PLATING: 0.76um MIN. GOLD PLATING OVER 1.27~7.62um
 MATTIN NICKEL UNDERPLATED ON COPPER SURFACE.
 DETAIL SPECIFICATION PLEASE REFER TO SHEET 2.
 - PRODUCT NO.: 2204899-1



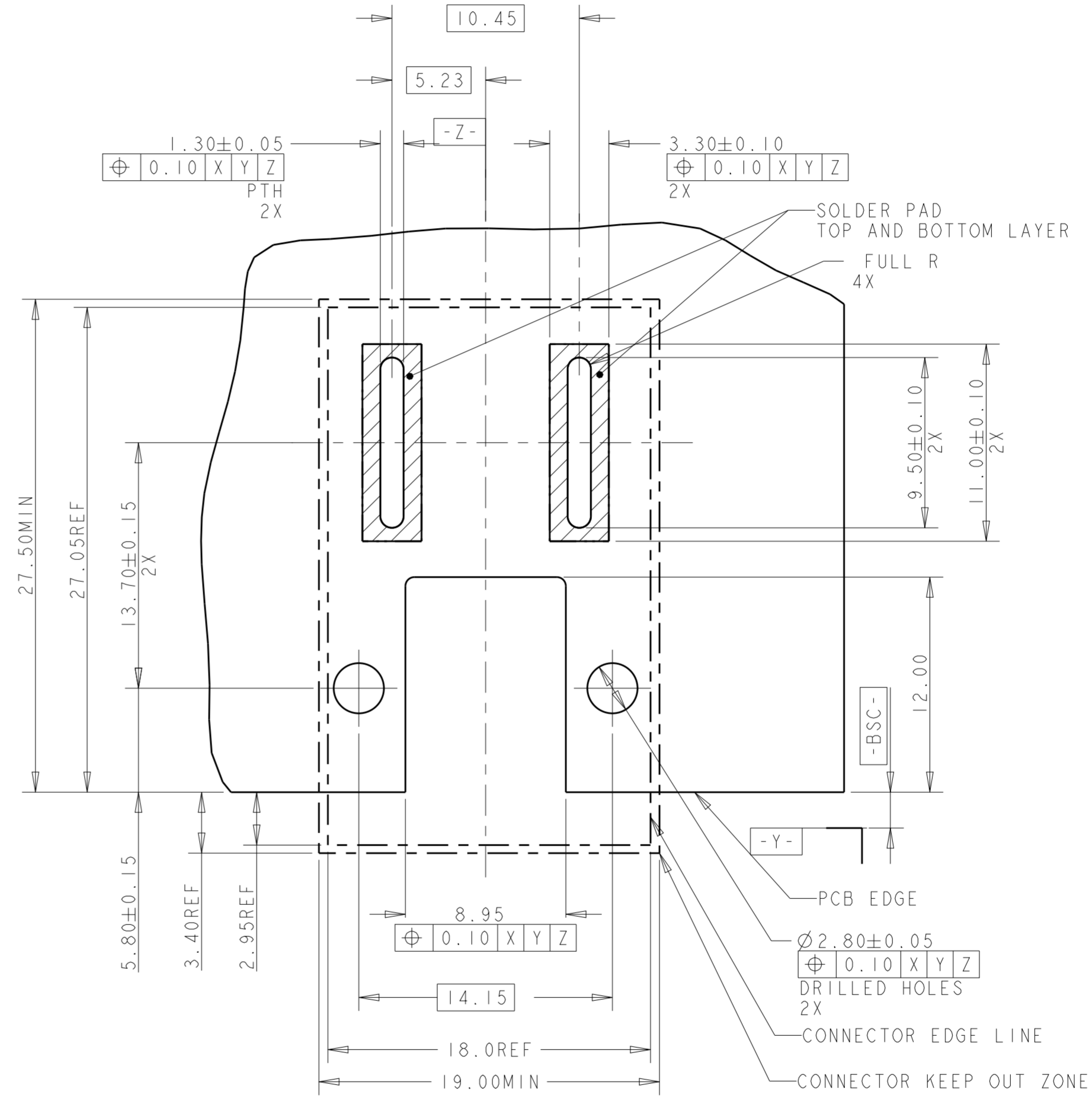
THIS DRAWING IS A CONTROLLED DOCUMENT.		DWN MAC LIU 16DEC2018	STE TE Connectivity	
DIMENSIONS: mm		CHK SUNY ZHAO 16DEC2018		
TOLERANCES UNLESS OTHERWISE SPECIFIED:		APVD SUNY ZHAO 16DEC2018	NAME CROWN CLIP JUNIOR POWER CONNECTOR HIGH CURRENT POWER VERSION SOLDERING	
0 PLC ± - 1 PLC ± 0.5 2 PLC ± 0.30 3 PLC ± 0.150 4 PLC ± - ANGLES ± 2° FINISH		PRODUCT SPEC 108-128048	SIZE A2	CAGE CODE 0079
MATERIAL		APPLICATION SPEC -	DRAWING NO C-2204899	RESTRICTED TO -
-		WEIGHT -	SCALE 2:1	SHEET 1 OF 2
CUSTOMER DRAWING		REV A		

THIS DRAWING IS UNPUBLISHED. RELEASED FOR PUBLICATION
 © COPYRIGHT BY - TE CONNECTIVITY ALL RIGHTS RESERVED.

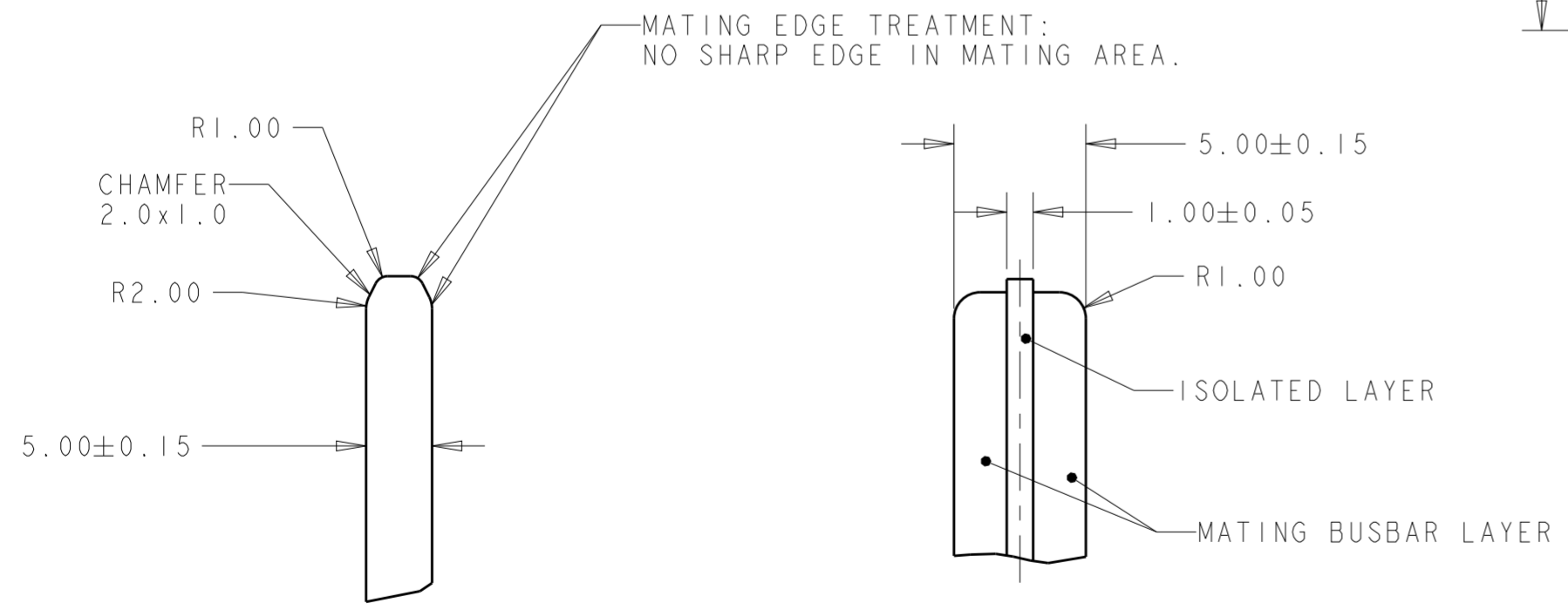
REVISIONS				
P	LTR	DESCRIPTION	DATE	APVD
-	-	SEE SHEET 1	-	-



REFERENCE APPLICATION VIEW



RECOMMENDED PCN LAYOUT FOR REFLOW SOLDERING
 THICKNESS: 2.1~5.6MM



DETAIL A
 SCALE 2:1

SOLID MATING BUSBAR

LAMINATED MATING BUSBAR

THIS DRAWING IS A CONTROLLED DOCUMENT.		DWN MAC LIU 16DEC2018	TE Connectivity	
DIMENSIONS: mm		CHK SUNY ZHAO 16DEC2018		
TOLERANCES UNLESS OTHERWISE SPECIFIED:		APVD SUNY ZHAO 16DEC2018	NAME CROWN CLIP JUNIOR POWER CONNECTOR HIGH CURRENT POWER VERSION SOLDERING	
0 PLC ± -		PRODUCT SPEC 108-128048	SIZE A2	
1 PLC ±0.5		APPLICATION SPEC	CAGE CODE 0079	
2 PLC ±0.30		WEIGHT	DRAWING NO G-2204899	
3 PLC ±0.150		MATERIAL	RESTRICTED TO	
4 PLC ± -		FINISH	SCALE 2:1 SHEET 2 OF 2 REV A	
ANGLES ±2°		CUSTOMER DRAWING		