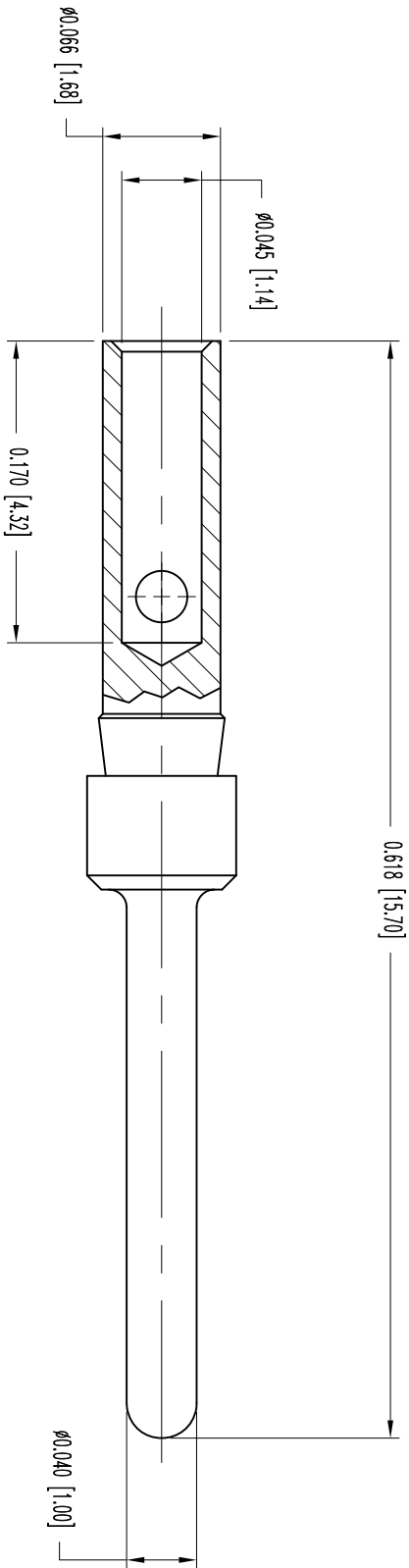



THIS DRAWING CONTAINS INFORMATION PROPRIETARY TO POSITRONIC AND ITS SUBSIDIARIES. POSITRONIC BELIEVES THE DATA ON THIS DRAWING TO BE RELIABLE. SINCE THE TECHNICAL INFORMATION IS GIVEN FREE OF CHARGE, THE USER ASSUMES ALL LIABILITY FOR ANY INADEQUACIES, OMISSIONS AND RISK. POSITRONIC ASSUMES NO RESPONSIBILITY FOR RESULTS OBTAINED OR DAMAGES INCURRED FROM USE OF SUCH INFORMATION IN WHOLE OR IN PART.



- NOTES:
1. MATERIAL & FINISHES:
CONTACT: COPPER ALLOY, GOLD FLASH OVER NICKEL PLATE.
 2. DETAILED PRODUCT, MECHANICAL, AND ELECTRICAL INFORMATION IS AVAILABLE IN THE LATEST STANDARD DENSITY D-SUB PRODUCT PUBLICATION.
VISIT [CONNECTPOSITRONIC.COM/PRODUCTS/45/STANDARD-DENSITY-D-SUB-PRODUCT PUBLICATION](http://CONNECTPOSITRONIC.COM/PRODUCTS/45/STANDARD-DENSITY-D-SUB-PRODUCT-PUBLICATION).
 3. CONTACTS ARE ROHS COMPLIANT PER ROHS DIRECTIVE 2002/95/EC OF 27 JAN 2003.
 4. DIMENSIONS ARE IN INCHES [MILLIMETERS].



POSITRONIC INDUSTRIES INC.
www.connectpositronic.com FSCM 28198

DATE 2-14-06

SD SERIES

MC7520D/AA

SCALE N.T.S.

DRAWN BY YK

APPROVED BY R. WILLIAMS

TITLE

DATE 2-14-06

DRAWING NUMBER SK7043

REV. A

DECIMAL TOL. ± 0.015 [0.38]

ANGULAR TOL. ± 5°

DATE	REV	REVISION/RECORD	APP	DR	OK
2-14-06	NC	ECO 25502	RCT	YK	COLF
11-2	A	ECO 34678	COLF	TL	COLF

SK7043