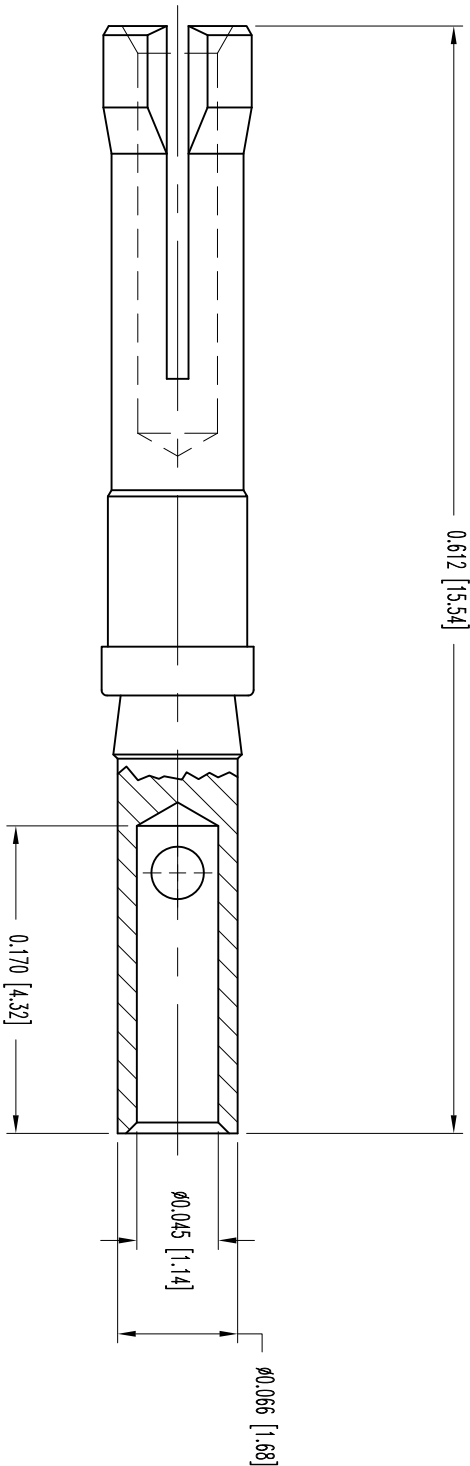


THIS DRAWING CONTAINS INFORMATION PROPRIETARY TO POSTTRONIC AND ITS SUBSIDIARIES. POSTTRONIC BELIEVES THE DATA ON THIS DRAWING TO BE RELIABLE. SINCE THE TECHNICAL INFORMATION IS GIVEN HERE OF CHANGE, THE USER ASSUMES ALL RESPONSIBILITY FOR THE DESIGN AND RISK. POSTTRONIC ASSUMES NO RESPONSIBILITY FOR RESULTS OBTAINED OR DAMAGES INCURRED FROM USE OF SUCH INFORMATION IN WHOLE OR IN PART.

DATE	REV	REVISION RECORD	APP	DR	OK
11-30-05	NC	ECO 25125	RCT	YK	COLF
11-3	A	ECO 34678	COLF	TL	COLF

SK6772



NOTES:

1. MATERIAL AND FINISHES:

CONTACT: COPPER ALLOY, GOLD FLASH OVER NICKEL PLATE.

2. DETAILED PRODUCT, MECHANICAL, AND ELECTRICAL INFORMATION IS AVAILABLE IN THE LATEST STANDARD DENSITY D-SUB PRODUCT PUBLICATION.

VISIT CONNECTPOSTTRONIC.COM/PRODUCTS/45/STANDARDENSITYD-SUBMINIATURE OR CONNECTPOSTTRONIC.COM.

3. CONTACTS ARE ROHS COMPLIANT PER ROHS DIRECTIVE 2002/95/EC OF 27 JAN 2003.

4. DIMENSIONS ARE IN INCHES [MILLIMETERS].



POSTTRONIC INDUSTRIES INC.
www.connectposttronic.com

FSCM 28198



CRIMP CONTACT, FEMALE
SD SERIES

SCALE
N.T.S.

DRAWN BY
YK

APPROVED BY
R. WILLIAMS

DECIMAL TOL.
± 0.015 [0.38]

TITLE
FC7520D/AA

ANGULAR TOL.
± N/A

DATE
11-30-05

DRAWING NUMBER
SK6772

REV.
A