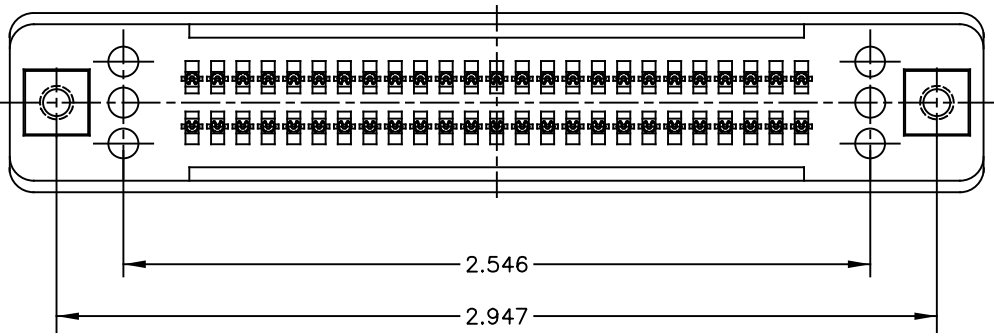
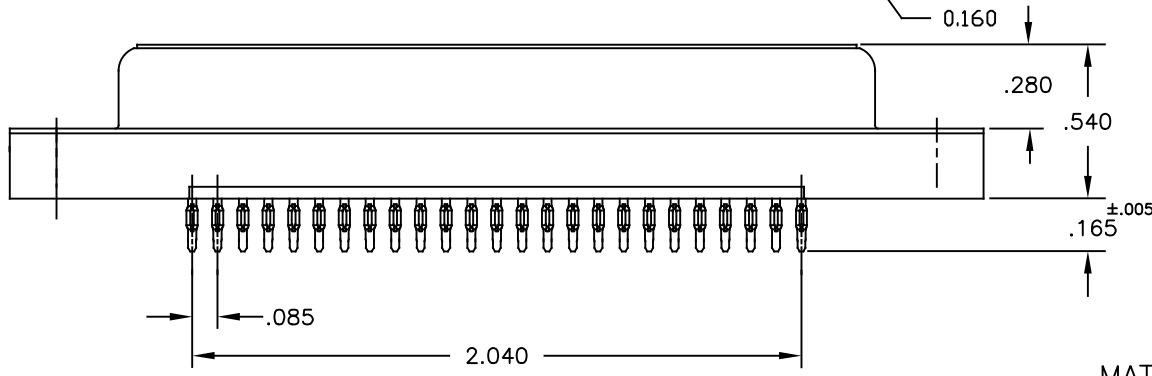
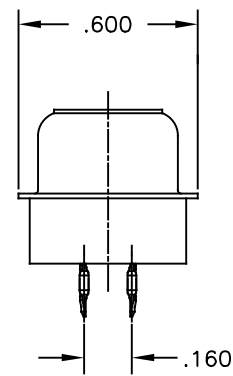
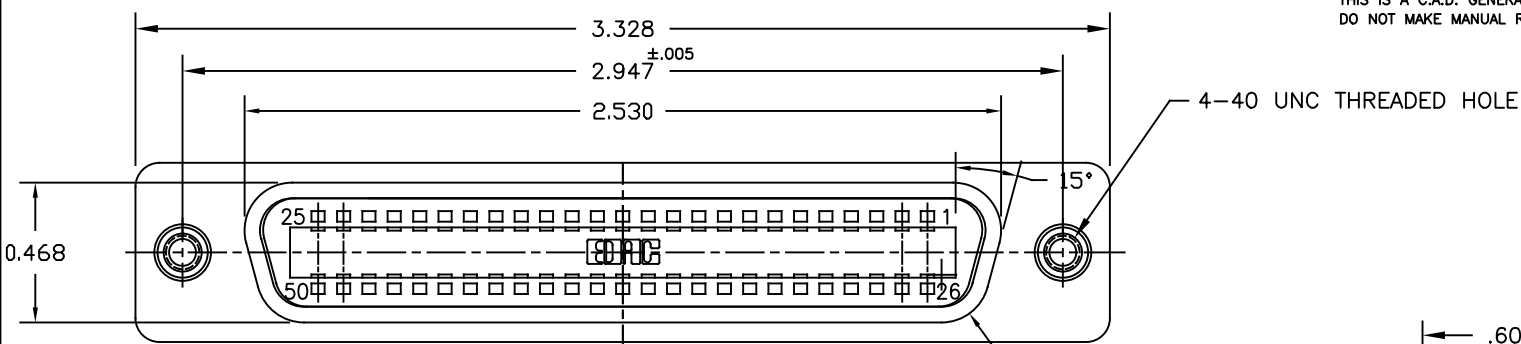


THIS IS A C.A.D. GENERATED DRAWING  
DO NOT MAKE MANUAL REVISIONS TO MASTER.



ISSUE NUMBER	
ORIGINAL	①
TAIL LENGTH WAS .175. P.Z 5/15/01	⑤
DIM. .160+0.005/-0.000 WAS .170±0.005 AND 3.328 WAS 3.262 F.BRIONES JUL.31/01	⑥
DIM. .165±0.005 WAS .165-0.005/-0.000 F.BRIONES FEB.11/02	⑦
REF TO LEAD IN TIN/LEAD PLATING REMOVED. R.BLAKEY JUN.1/05	⑧
REF TO RoHS EXEMPT ADDED. TIN/LEAD PLATING WAS TIN. R.BLAKEY JUN.29/06	⑨
REF TO LEAD IN TIN/LEAD PLATING REMOVED. F.BRIONES NOV.30/07	⑩
PAGE 2 ADDED R.ESMAELI APR.24/19	⑪



**MATERIALS:**

- INSULATOR : THERMOPLASTIC POLYESTER COLOR BLUE
- SHELL: STEEL, NICKEL PLATED
- CONTACTS: PHOSPHOR BRONZE GOLD PLATED ON CONTACT AREA  
TIN ON COMPLIANT SECTION OVER NICKEL
- THREADED INSERTS: BRASS, NICKEL PLATED



THIS PRODUCT CONFORMS TO THE EUROPEAN UNION DIRECTIVES 2002/95/EC AND 2002/96/EC FOR RoHS COMPLIANCY WITH EXEMPTION #11: LEAD USED IN COMPLIANT PIN CONNECTOR SYSTEMS.

CONNECTOR PART NO. B57-050-220-202

50 POSITION MINIATURE RIBBON RECEPTACLE  
COMPLIANT PIN (PRESS FIT)



EDAC INC  
TORONTO, ONTARIO  
CANADA

YOUR CONNECTION TO QUALITY & SERVICE

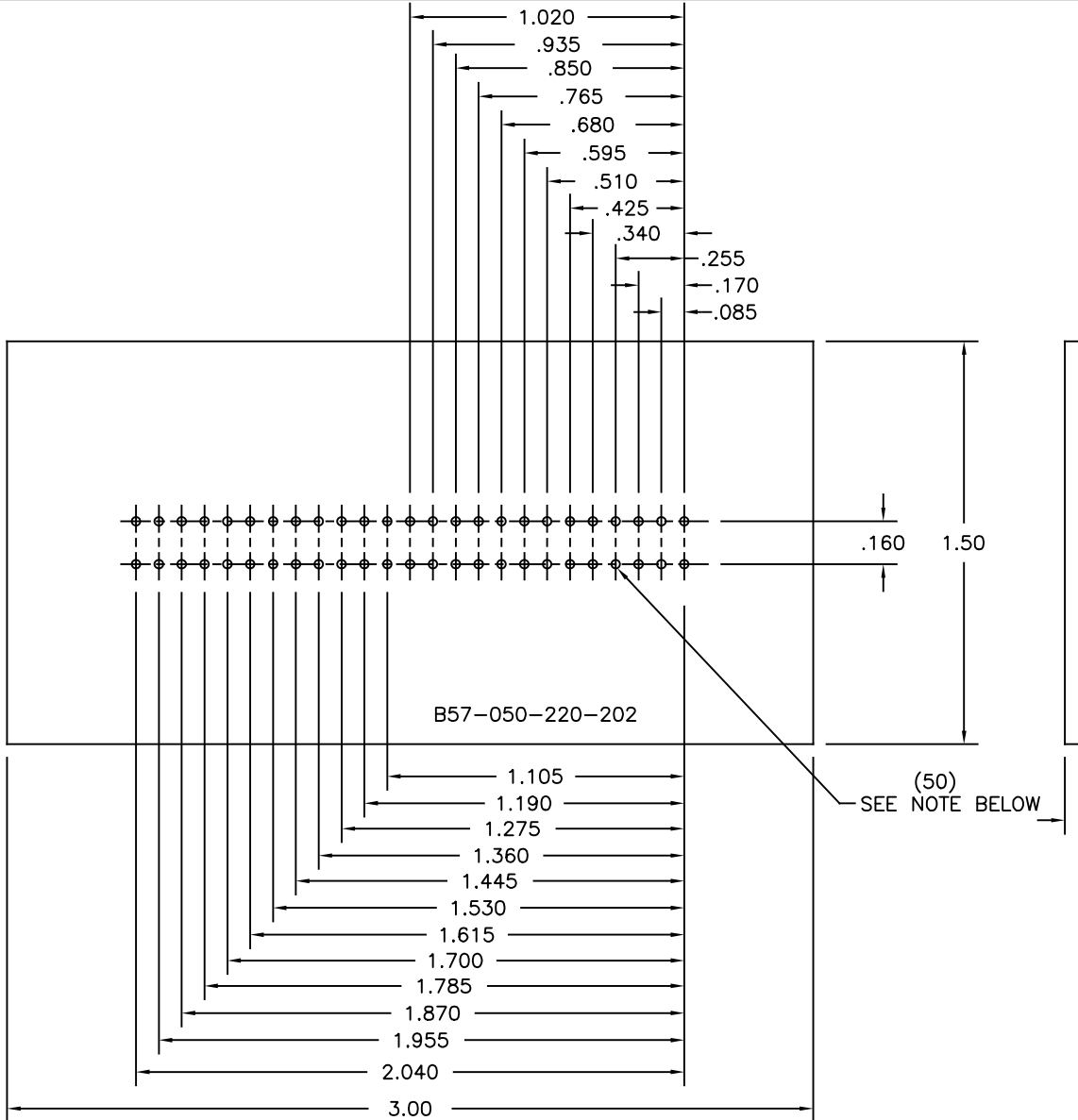
THESE DRAWINGS AND SPECIFICATIONS ARE THE PROPERTY OF EDAC INC., AND SHALL NOT BE REPRODUCED, OR COPIED OR USED AS THE BASIS FOR THE MANUFACTURE OR SALE OF APPARATUS WITHOUT WRITTEN PERMISSION.

ACAD REFERENCE NO. B57-050-220-202	
DRAWN: F.BRIONES	DATE: AUG.28/00
CHECKED:	DATE:
SCALE: IN C.A.D. 1:1	SHEET 1 OF 2
DRAWING NUMBER B57-050-220-202	ISSUE 11

THIS IS A C.A.D. GENERATED DRAWING  
DO NOT MAKE MANUAL REVISIONS TO MASTER.



ISSUE NUMBER	
ORIGINAL	①
TAIL LENGTH WAS .175. P.Z 5/15/01	⑤
DIM. .160+0.005/-0.000 WAS .170±0.005 AND 3.328 WAS 3.262 F.BRIONES JUL.31/01	⑥
DIM. .165±0.005 WAS .165-0.005/-0.000 F.BRIONES FEB.11/02	⑦
REF TO LEAD IN TIN/LEAD PLATING REMOVED. R.BLAKELY JUN.1/05	⑧
REF TO RoHS EXEMPT ADDED. TIN/LEAD PLATING WAS TIN. R.BLAKELY JUN.29/06	⑨
REF TO LEAD IN TIN/LEAD PLATING REMOVED. F.BRIONES NOV.30/07	⑩
PAGE 2 ADDED R.ESMAEILI APR.24/19	⑪



NOTE:

TO OBTAIN OPTIMUM COMPLIANT SECTION PERFORMANCE,  
DRILL HOLES  $.038 \pm .001$  DIAMETER  
COPPER PLATE,  $.001$  MINIMUM THICKNESS FOLLOWED BY  
TIN PLATE TO PROVIDE FINISHED HOLES  $.030/.035$  DIAMETER

50 POSITION MINIATURE RIBBON RECEPTACLE  
COMPLIANT PIN (PRESS FIT)

ACAD REFERENCE NO. B57-050-220-202	
DRAWN: F.BRIONES	DATE: AUG.28/00
CHECKED:	DATE:
SCALE: IN C.A.D. 1:1	SHEET 2 OF 2
DRAWING NUMBER B57-050-220-202	ISSUE 11



THIS PRODUCT CONFORMS TO THE EUROPEAN  
UNION DIRECTIVES 2002/95/EC AND 2002/96/EC  
FOR RoHS COMPLIANCY WITH EXEMPTION #11:  
LEAD USED IN COMPLIANT PIN CONNECTOR SYSTEMS.

CONNECTOR PART NO. B57-050-220-202



EDAC INC  
TORONTO, ONTARIO  
CANADA

YOUR CONNECTION TO QUALITY & SERVICE

THESE DRAWINGS AND SPECIFICATIONS  
ARE THE PROPERTY OF EDAC INC., AND  
SHALL NOT BE REPRODUCED, OR COPIED  
OR USED AS THE BASIS FOR THE  
MANUFACTURE OR SALE OF APPARATUS  
WITHOUT WRITTEN PERMISSION.