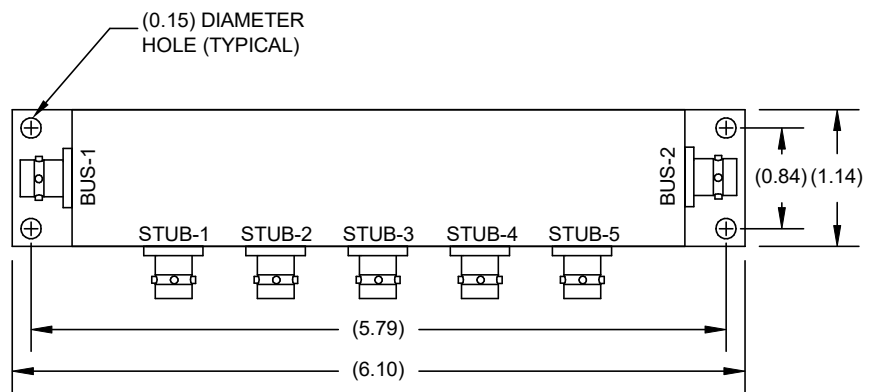
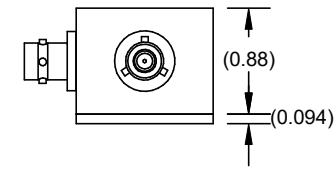
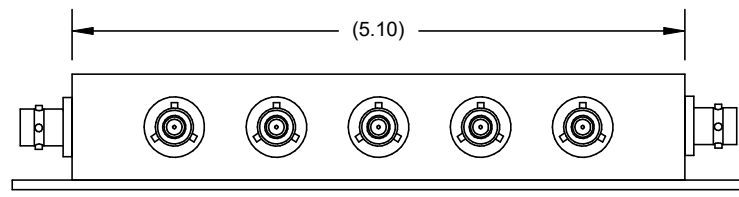
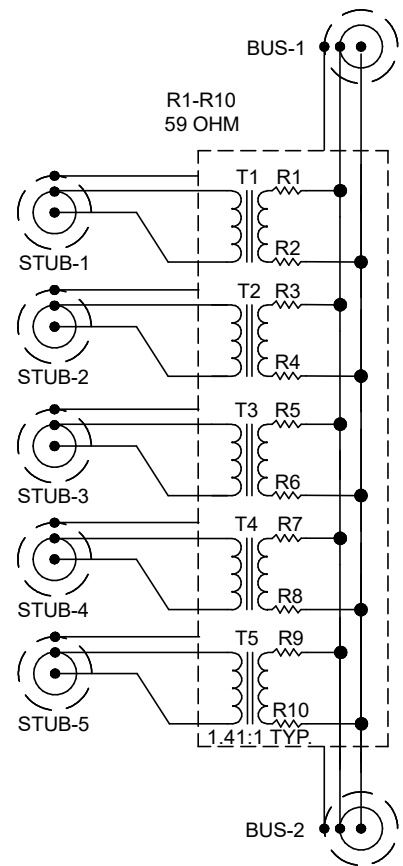


REVISION			
REV	DESCRIPTION	DATE	APPROVED
A	OUTLINE DRAWING	11/01/19	



**1.0 ELECTRICAL SPECIFICATIONS: IAW MIL-STD-1553B**

- 1.1 DROOP 20% MAXIMUM
- 1.2 OVERSHOOT AND RINGING +/- 1.0V PK-PK
- 1.3 TRANSFORMER RATIO (T1-T5) 1.41CT:1CT
- 1.4 FAULT PROTECTION (R1-R10) 59 ohm +/- 1%, 2 WATT PER MIL-R-39007
- 1.5 COMMON MODE REJECTION -55 dB @ 1 MHz

**2.0 MECHANICAL SPECIFICATIONS:**

- 2.1 HOUSING: DIE CAST A360 ALUMINUM ALLOY  
CLEAR ANODIZED AND PAINTED WITH TEXTURED BAKED ENAMEL, COLOR BLUE
- 2.2 BASE PLATE: T6061 ALUMINUM, SATIN FINISH
- 2.3 CONNECTOR BJ770 OR EQUIVALENT
- 2.4 MATING CONNECTOR TRB PLUG PL75 OR EQUIVALENT

**3.0 ENVIRONMENTAL:**

- 3.1 OPERATING TEMPERATURE -55 C TO + 125 C

**BUS COUPLERS ARE ASSEMBLED USING ROHS COMPLIANT COMPONENTS, PROCESSES AND LEAD FREE SOLDER**

CAD SYSTEM DRAWING - DO NOT REVISE MANUALLY					
UNLESS OTHERWISE SPECIFIED ALL DIMENSIONS ARE IN INCHES			SIGNATURE	DATE	TITLE <b>5 STUB NON TERMINATED BUS COUPLER ASSEMBLY</b>
DECIMALS--X-- ± N/A			DRAWN BY:	11/01/19	
DECIMALS--XX-- ±2.00			CHECKED BY:	11/01/19	
DECIMALS--XXX-- ±N/A			APPROVED ENGINEERING:		
ANGLES-----1N/A			APPROVED MANUFACTURING:		DRAWING NUMBER: <b>TEBC-1005-LF</b>
NOTE: ALL DIMENSIONS ARE NOMINAL			CUSTOMER APPROVAL		
DASH	NEXT ASSY	USED ON	CAGE CODE: 14949		SCALE: NTS   DO NOT SCALE DRAWING
APPLICATION			SHEET 1 OF 1		