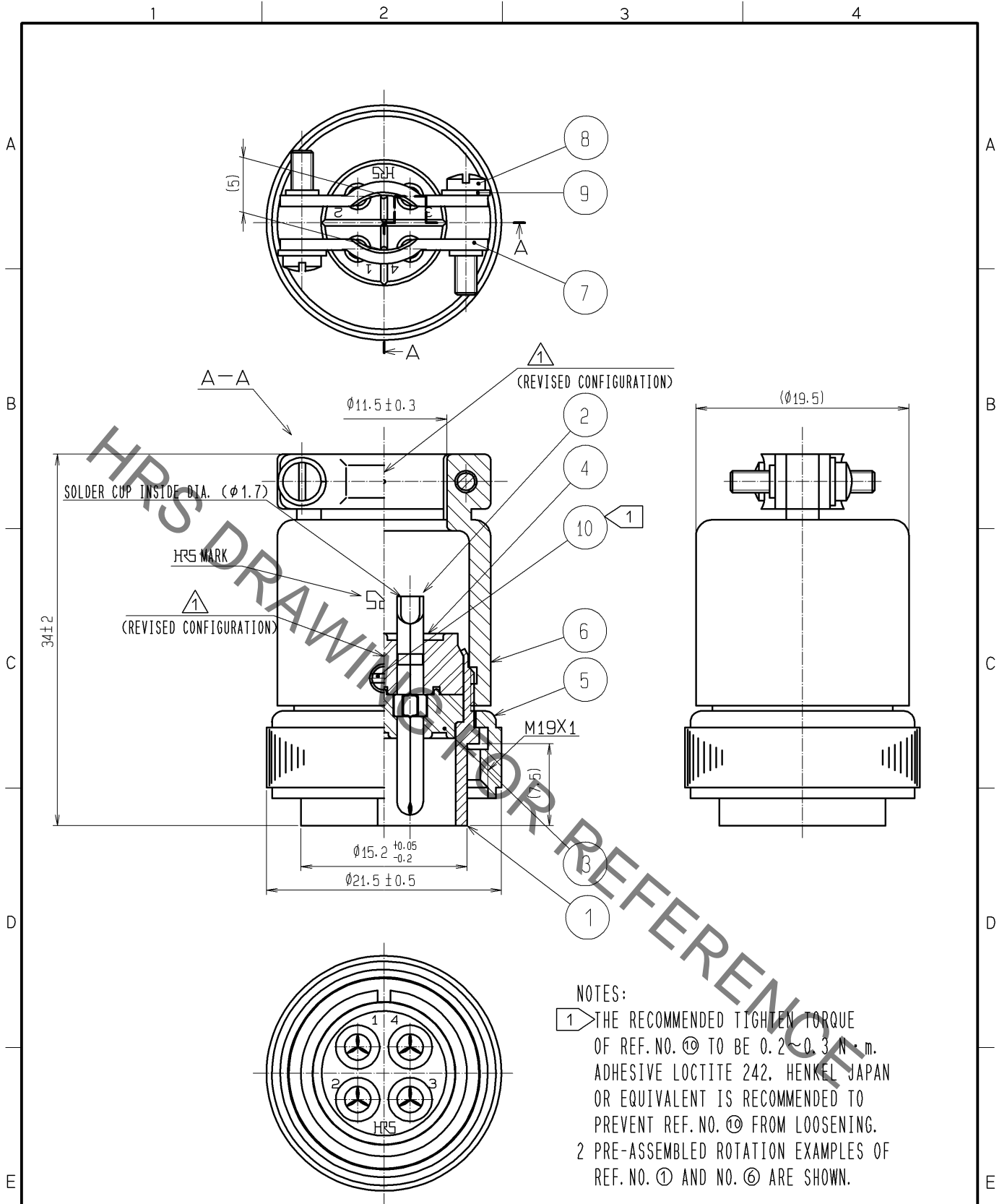


Jun.1.2020 Copyright 2020 HIROSE ELECTRIC CO., LTD. All Rights Reserved.
 In case of consideration for using Automotive equipment / device which demand high reliability, kindly contact our sales window correspondents.



NOTES:
 1 THE RECOMMENDED TIGHTEN TORQUE OF REF. NO. ⑩ TO BE 0.2~0.3 N·m. ADHESIVE LOCTITE 242, HENKEL JAPAN OR EQUIVALENT IS RECOMMENDED TO PREVENT REF. NO. ⑩ FROM LOOSENING.
 2 PRE-ASSEMBLED ROTATION EXAMPLES OF REF. NO. ① AND NO. ⑥ ARE SHOWN.

5	BRASS	NICKEL PLATING	10	BRASS	NICKEL PLATING M2.6X0.45X2
4	DIALLYL PHTHALATE	(BLACK) UL94V-0	9	PHOSPHOR BRONZE	NICKEL PLATING
3	DIALLYL PHTHALATE	(BLACK) UL94V-0	8	BRASS	NICKEL PLATING JIS B 1101 M2X0.4X10
2	BRASS	SILVER PLATING 2μm min.	7	BRASS	NICKEL PLATING
1	BRASS	NICKEL PLATING	6	BRASS	NICKEL PLATING
NO.	MATERIAL	FINISH . REMARKS	NO.	MATERIAL	FINISH . REMARKS

UNITS mm		SCALE 2 : 1	COUNT 2	DESCRIPTION OF REVISIONS DIS-C-001596	DESIGNED TH. KAMEYA	CHECKED HY. KISHI	DATE 10.02.08
APPROVED : MO. SATOH 06.05.19 CHECKED : MO. SATOH 06.05.19 DESIGNED : EM. YUMINO 06.05.18 DRAWN : EM. YUMINO 06.05.18				DRAWING NO. EDC4-040369-71 PART NO. RM15TP-4PA(71) CODE NO. CL109-0899-0-71			