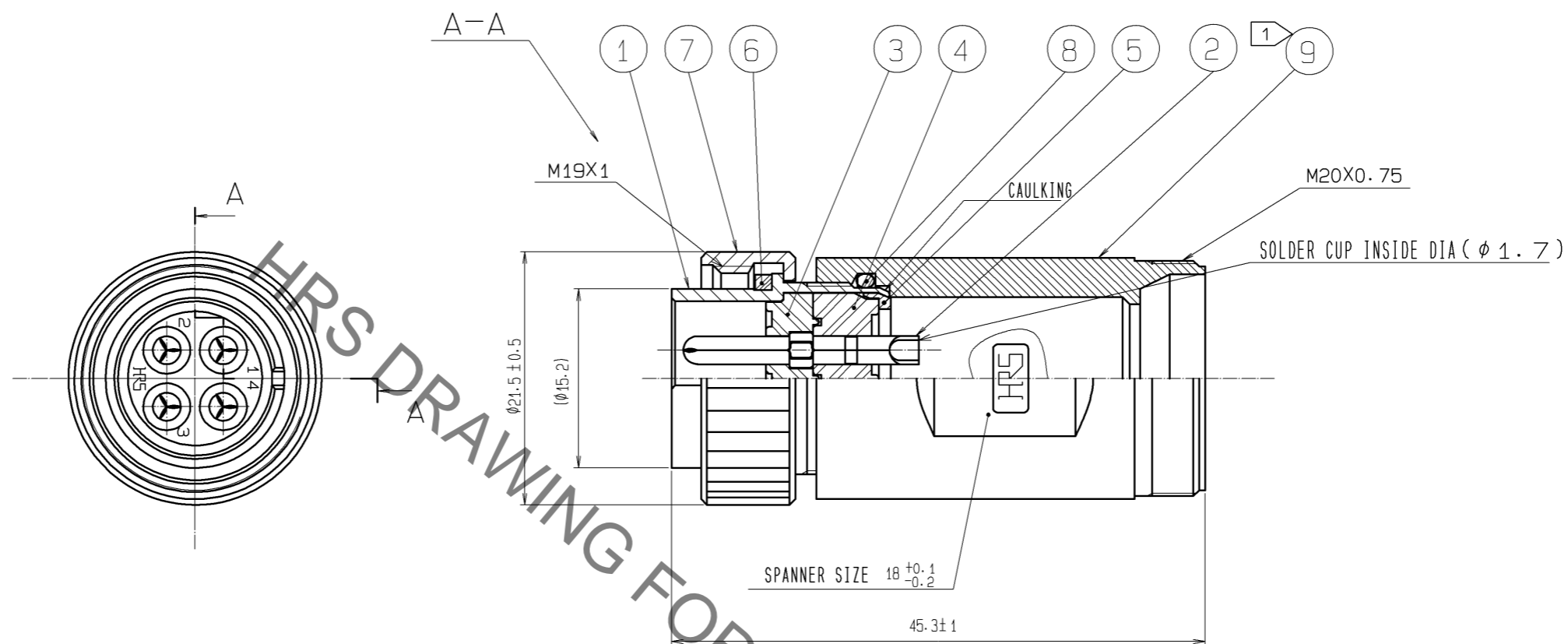


Jun.1.2020 Copyright 2020 HIROSE ELECTRIC CO., LTD. All Rights Reserved.  
 In case of consideration for using Automotive equipment / device which demand high reliability, kindly contact our sales window correspondents.



HRS DRAWING FOR REFERENCE

- NOTES
- ① THE RECOMMENDED TIGHTENING TORQUE OF REF. NO. ⑨ : 3N · m.  
 LOCTITE 243, HENKEL JAPAN OR EQUIVALENT IS RECOMMENDED TO PREVENT LOOSENING.
  - 2 THIS PRODUCTS TO BE USED WITH CABLECLAMP, JR16WCC-\*(72).  
 \* INDICATES APPLICABLE CABLE DIAMETER.
  - 3 ROTATIONAL DIRECTION IMAGE OF REF. NO. ⑨ TO REF. NO. ① IS AN EXAMPLE.
  - 4 THE CABLE PULL AND TWISTING STRENGTH AND OTHER CHARACTERISTICS MAY DIFFER.  
 DEPENDING ON THE CABLE STRUCTURE, PLEASE CONFIRM BEFORE THE USE.

NO.	MATERIAL	FINISH . REMARKS	NO.	MATERIAL	FINISH . REMARKS
5	POLYACETAL	(WHITE)			
4	DIALLYL PHTHALATE	(BLACK) UL94V-0	9	ZINC ALLOY	CHROME PLATING
3	DIALLYL PHTHALATE	(BLACK) UL94V-0	8	SILICONE RUBBER	(BLACK)
2	COPPER ALLOY	SILVER PLATING 2µm min.	7	BRASS	CHROME PLATING
1	ZINC ALLOY	CHROME PLATING	6	SILICONE RUBBER	(RED)

UNITS mm		SCALE 2 : 1	COUNT 	DESCRIPTION OF REVISIONS	DESIGNED	CHECKED	DATE
HIROSE ELECTRIC CO., LTD.				APPROVED : E.J. KUNII 14. 04. 14 CHECKED : HY. KISHI 14. 04. 14 DESIGNED : MM. ISHII 14. 04. 11 DRAWN : MM. ISHII 14. 04. 11	DRAWING NO. EDC3-111157-71	PART NO. RM15WTPZA-4P(71)	CODE NO. CL109-1735-8-71