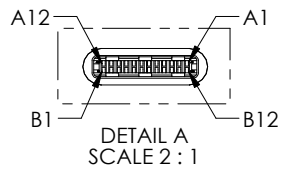
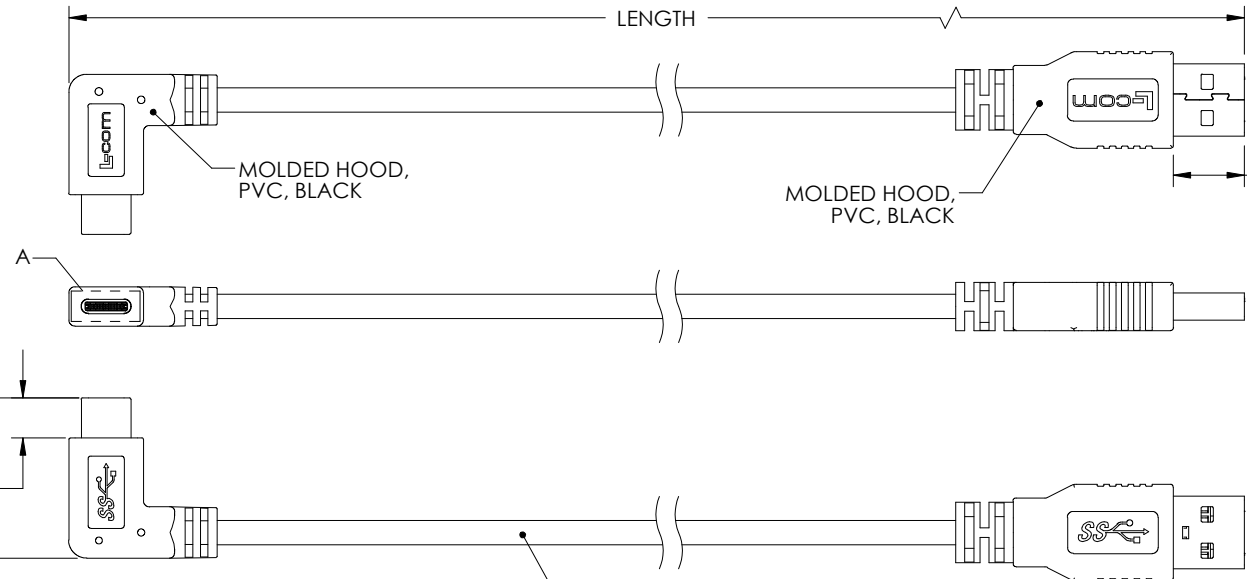


THE INFORMATION CONTAINED IN THIS DRAWING IS THE SOLE PROPERTY OF L-COM, INC. ANY REPRODUCTION IN PART OR WHOLE WITHOUT THE WRITTEN PERMISSION OF L-COM, INC. IS PROHIBITED.

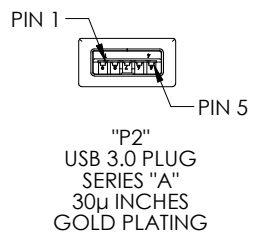
| REVISIONS | | | |
|-----------|------------------------|----------|----------|
| REV | DESCRIPTION | DATE | APPROVED |
| A | REV A DRAWING RELEASED | 03/06/18 | JLABOY |
| | | | |
| | | | |



"P1"
USB 3.0 PLUG
SERIES "C"
LEFT/RIGHT EXIT
30μ INCHES
GOLD PLATING



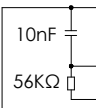
.463
[11.75]
MIN.



"P2"
USB 3.0 PLUG
SERIES "A"
30μ INCHES
GOLD PLATING

UL STYLE 2725,
(1) 32AWG STRANDED TINNED COPPER TWISTED PAIR
(2) 32AWG SHIELDED STRANDED TINNED COPPER TWISTED PAIR WITH DRAIN WIRE
(2) 26AWG STRANDED TINNED COPPER CONDUCTORS
OVERALL ALUMINUM/POLYESTER SHIELD PLUS TINNED COPPER BRAID SHIELD
JACKET: PVC, BLACK (NOM DIA. .165" [4.2])

| WIRE MAP | | | | | |
|---------------|-------------|--------------------------------|-------|-------------|--------|
| "P1" | SIGNAL NAME | CONDUCTOR | "P2" | SIGNAL NAME | COLOR |
| A1,B1,A12,B12 | GND | INDV. | 4 | GND | BLACK |
| A4,B4,A9,B9 | VBUS | SHIELDED PAIR DRAIN 1, DRAIN 2 | 7 | GND_DRAIN | N/A |
| A5 | CC | INDV. | 1 | VBUS | RED |
| B5 | VCONN | | | N/C | |
| A6 | Dp1 | UNSHIELDED PAIR | 3 | D+ | GREEN |
| A7 | Dn1 | UNSHIELDED PAIR | 2 | D- | WHITE |
| A2 | SSTXp1 | SHIELDED PAIR 1 | 6 | StdA_SSRX+ | YELLOW |
| A3 | SSTXn1 | SHIELDED PAIR 1 | 5 | StdA_SSRX- | BLUE |
| B11 | SSRXp1 | SHIELDED PAIR 2 | 9 | StdA_SSTX+ | ORANGE |
| B10 | SSRXn1 | SHIELDED PAIR 2 | 8 | StdA_SSTX- | PURPLE |
| SHELL | SHIELD | BRAID | SHELL | SHIELD | N/A |



| PART NUMBER | LENGTH METERS [FEET] |
|--------------|----------------------|
| U3A00075-03M | 0.3 [.98] |
| U3A00075-05M | 0.5 [1.64] |
| U3A00075-1M | 1.0 [3.28] |

NOTES:

- CABLE ASSEMBLY SHALL HAVE 360° SHIELD TERMINATION.
- CABLE ASSEMBLY SHALL BE TESTED FOR CONTINUITY.
- L-COM LOGO AND USB ICON MAY BE ON ANY SIDE OF THE OVERMOLD FOR USB SERIES "C" END.
- CABLE ASSEMBLY SHALL BE INDIVIDUALLY PACKAGED IN ACCORDANCE WITH L-COM SPECIFICATION PS-0031.

REGULATORY COMPLIANCE:
CE2011/65/EU(RoHS DIRECTIVE)

| | | | | |
|---|--|----------------------------|---|--|
| UNLESS OTHERWISE SPECIFIED, DIMENSIONS ARE IN INCHES [mm] OVERALL CABLE LENGTH TOLERANCE: ≤12 [305] = +1 [25] / -0 >12 [305] ≤60 [1524] = +2 [51] / -0 >60 [1524] ≤120 [3048] = +4 [102] / -0 >120 [3048] ≤300 [7620] = +6 [152] / -0 >300 [7620] = +5% / -0% | APPROVALS | DATE | | 50 HIGH STREET NORTH ANDOVER, MA 01845 |
| | DRAWN BY S.LI | 11/13/17 | | |
| ALL OTHER DIMENSIONAL TOLERANCES: .X = ± .2 [5.08] .XX = ± .02 [1.51] .XXX = ± .005 [1.13] | CHECKED BY B.ZHANG | 11/13/17 | CATEGORY USB | |
| | APPROVED BY S.PAN | 11/13/17 | PRODUCT DESCRIPTION CA, USB 3.0 TYPE C LEFT/RIGHT EXIT TO STR. A | |
| PROJECTION | CONFIGURATION DETAILS OF UNDIMENSIONED FEATURES MAY VARY | COLOR VARIATIONS MAY OCCUR | SIZE A | FSCM NO. 43321 |
| | | | DWG. NO. U3A00075 | REV. A |
| | | | SCALE: NONE | CAD FILE: U3A00075.SLDDRW |
| | | | | SHEET 1 OF 1 |