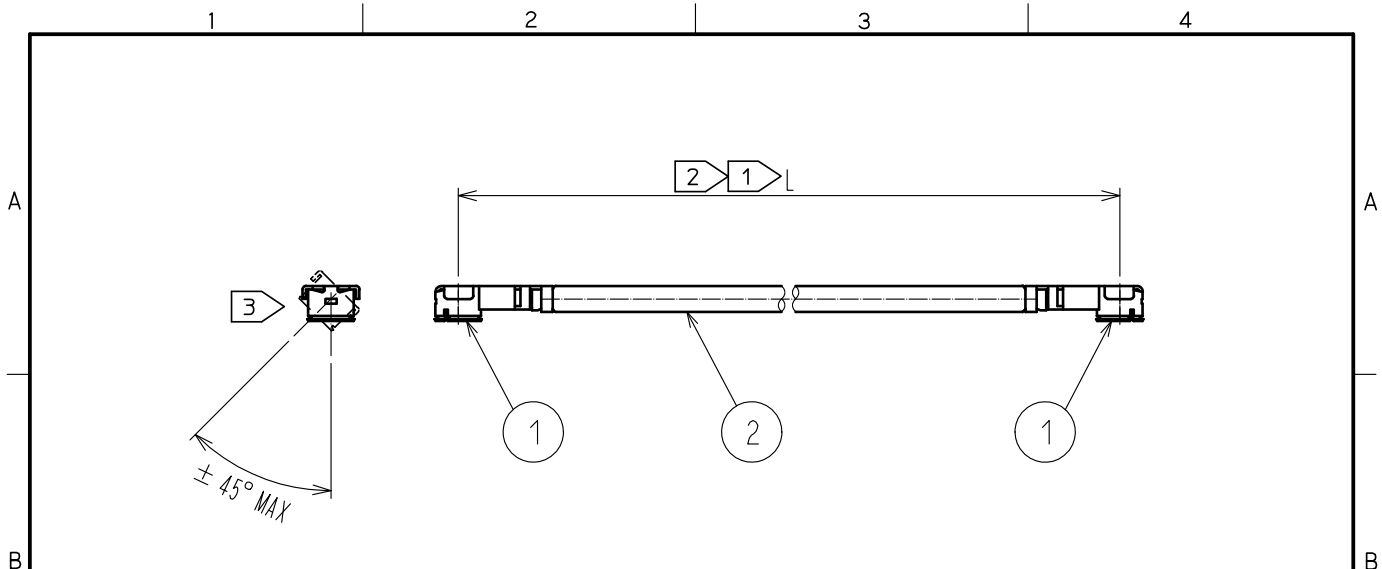


Jun.1.2020 Copyright 2020 HIROSE ELECTRIC CO., LTD. All Rights Reserved.
 In case of consideration for using Automotive equipment / device which demand high reliability, kindly contact our sales window correspondents.



Part No.	Cable color
~088*1T~	GRAY
~088*2T~	BLACK

HRS DRAWING TOP REFERENCE

NOTE ① We indicate the length of the harness on the last of product name. 'L' part.

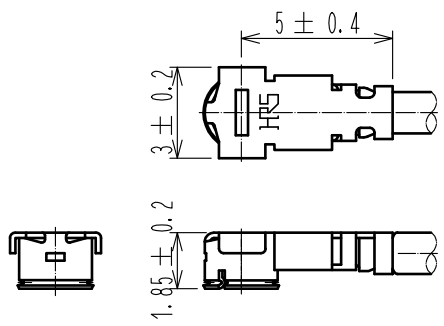
② Tolerance for [L]

Length L [mm]	Tolerance [mm]
35 ≦ L ≦ 200	±4
200 < L ≦ 500	±8
500 < L ≦ 1000	±12
1000 < L	±1.5%

③ Connector rotation angle is within ±45 degree from the above image.
 For long length in the case of L>500, the angle is optional.

4. Specifications are subject to change without notice.

【 DIMENSIONS OF CONNECTOR 】



1	U. FL-LP-088HF(06)	CL331-0560-8-06	2	1.37 Dia. coaxial cable	HALOGEN FREE
NO.	PART NO.	CODE NO.	NO.	PART NO.	

UNITS mm		SCALE FREE	COUNT ① 1	DESCRIPTION OF REVISIONS DIS-D-00003261	DESIGNED MS. MATSUMOTO	CHECKED MT. KANEKO	DATE 18. 06. 21
		APPROVED :NK. NINOMIYA 16. 07. 25	CHECKED :MT. KANEKO 16. 07. 25	DESIGNED :MS. MATSUMOTO 16. 07. 25	DRAWN :MS. MATSUMOTO 16. 07. 25	DRAWING NO. U. FL-2LPHF6-088**T-A-L ①	

HRS	HIROSE ELECTRIC CO., LTD.	APPROVED :NK. NINOMIYA 16. 07. 25	DRAWING NO. PART NO. CODE NO.	U. FL-2LPHF6-088**T-A-L ①
		CHECKED :MT. KANEKO 16. 07. 25		
		DESIGNED :MS. MATSUMOTO 16. 07. 25		
		DRAWN :MS. MATSUMOTO 16. 07. 25		